

## SINGLE ROW PIN STRIP HEADERS (RIGHT ANGLE)

### .100" CENTERS



#### PHYSICAL PROPERTIES

INSULATION MATERIAL: Glass reinforced thermoplastic, rated 94V-0

COLOR: Black

OXYGEN INDEX: 32

CONTACT MATERIAL: Copper alloy, gold or tin/lead plating over nickel

#### ELECTRICAL PROPERTIES

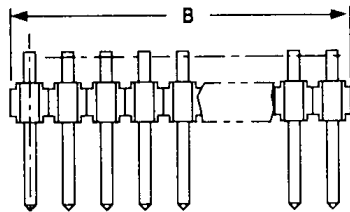
CURRENT RATING: 3 Amps/pin

Insulation Resistance > 1 x 10<sup>9</sup> Ohms

Dielectric Strength > 1000 VAC

#### ENVIRONMENTAL PROPERTIES

TEMPERATURE RATING: -55°C to 125°C



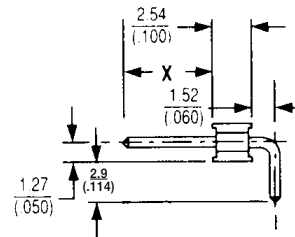
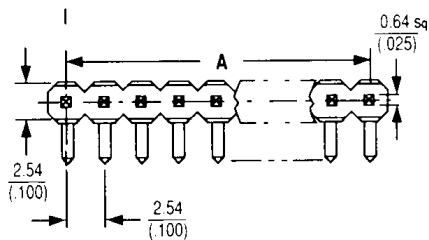
W	INTERFACE PLATING
G	10 μ" gold over nickel
H	30 μ" gold over nickel
T	100 μ" tin/lead over nickel

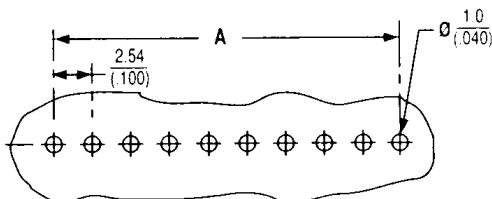
X	MATING LENGTH
A	8.1 (.318)
B	5.8 (.230)

#### Ordering Information

NUMBER OF POSITIONS	CATALOG NO. SPECIFY W, X	A	B
1	PS-01SR-WXA	—	2.54 (.100)
2	PS-02SR-WXA	2.54 (.100)	5.01 (.200)
3	PS-03SR-WXA	5.08 (.200)	7.62 (.300)
4	PS-04SR-WXA	7.62 (.300)	10.16 (.400)
5	PS-05SR-WXA	10.16 (.400)	12.70 (.500)
6	PS-06SR-WXA	12.70 (.500)	15.24 (.600)
7	PS-07SR-WXA	15.24 (.600)	17.78 (.700)
8	PS-08SR-WXA	17.78 (.700)	20.32 (.800)
9	PS-09SR-WXA	20.32 (.800)	22.86 (.900)
10	PS-10SR-WXA	22.86 (.900)	25.40 (1.000)
11	PS-11SR-WXA	25.40 (1.000)	27.94 (1.100)
12	PS-12SR-WXA	27.94 (1.100)	30.48 (1.200)
13	PS-13SR-WXA	30.48 (1.200)	33.02 (1.300)
14	PS-14SR-WXA	33.02 (1.300)	35.56 (1.400)
15	PS-15SR-WXA	35.56 (1.400)	38.10 (1.500)
16	PS-16SR-WXA	38.10 (1.500)	40.64 (1.600)
17	PS-17SR-WXA	40.64 (1.600)	43.18 (1.700)
18	PS-18SR-WXA	43.18 (1.700)	45.72 (1.800)
19	PS-19SR-WXA	45.72 (1.800)	48.26 (1.900)
20	PS-20SR-WXA	48.26 (1.900)	50.80 (2.000)
21	PS-21SR-WXA	50.80 (2.000)	53.34 (2.100)
22	PS-22SR-WXA	53.34 (2.100)	55.88 (2.200)
23	PS-23SR-WXA	55.88 (2.200)	58.42 (2.300)
24	PS-24SR-WXA	58.42 (2.300)	60.96 (2.400)
25	PS-25SR-WXA	60.96 (2.400)	63.50 (2.500)
26	PS-26SR-WXA	63.50 (2.500)	66.04 (2.600)
27	PS-27SR-WXA	66.04 (2.600)	68.58 (2.700)
28	PS-28SR-WXA	68.58 (2.700)	71.12 (2.800)
29	PS-29SR-WXA	71.12 (2.800)	73.66 (2.900)
30	PS-30SR-WXA	73.66 (2.900)	76.20 (3.000)
31	PS-31SR-WXA	76.20 (3.000)	78.74 (3.100)
32	PS-32SR-WXA	78.74 (3.100)	81.28 (3.200)
33	PS-33SR-WXA	81.28 (3.200)	83.82 (3.300)
34	PS-34SR-WXA	83.82 (3.300)	86.36 (3.400)
35	PS-35SR-WXA	86.36 (3.400)	88.90 (3.500)
36	PS-36SR-WXA	88.90 (3.500)	91.44 (3.600)
37	PS-37SR-WXA	91.44 (3.600)	93.98 (3.700)
38	PS-38SR-WXA	93.98 (3.700)	96.52 (3.800)
39	PS-39SR-WXA	96.52 (3.800)	99.06 (3.900)
40	PS-40SR-WXA	99.06 (3.900)	101.6 (4.000)



#### Recommended Printed Circuit Board Layout



eg. PS-40SR-TBA