

NOTES: UNLESS OTHERWISE SPECIFIED;
 MATERIALS:
 BODY: GLASS REINFORCED POLYESTER UL94V-0; COLOR-LIGHT GREY.
 CONTACTS: COPPER ALLOY
 CONTACT FINISH:
 HE: 5 MICRONS [0,127 MICRONS] MIN GOLD OVER
 30 MICRONS [0,762 MICRONS] MIN PALLADIUM CONTACT
 AREA AND 100 MICRONS [2,54 MICRONS] MIN TIN/LEAD
 ALLOY ON CONTACT TAILS. 50 MICRONS [1,27 MICRONS]
 MIN NICKEL UNDERPLATE ALL OVER.

TYPICAL CATALOG NUMBER DESIGNATION

CONNECTOR TYPE: FIG 72 B R L 00 HE

NO. OF POSITIONS: 72

CONTACT FINISH: SEE NOTES

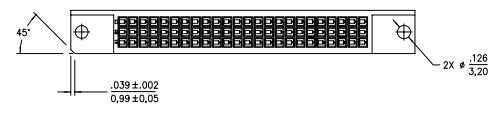
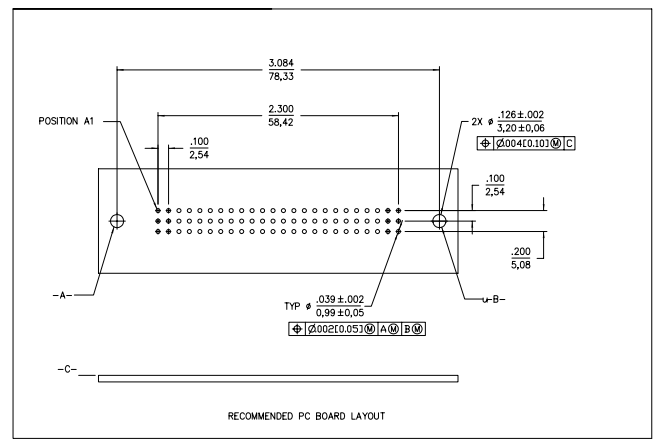
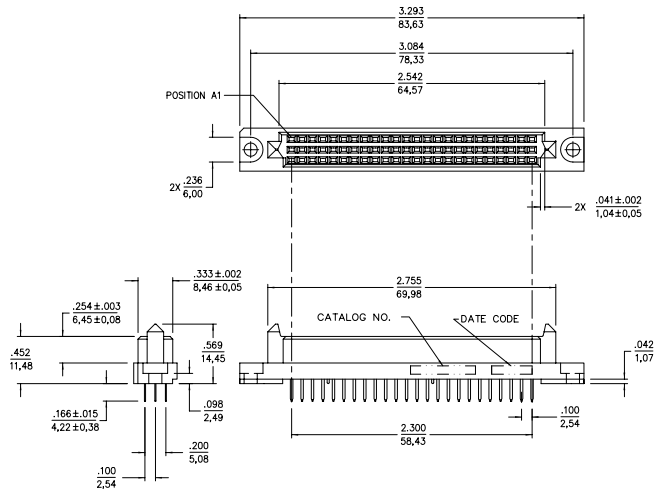
DESIGN VARIATION: 00 = STANDARD

TAIL LENGTH: L = .188 [4,72]

CONTACT ARRANGEMENT:
 30 = ROWS A,B,C - FULLY LOADED
 31 = ROWS A,B - FULLY LOADED
 32 = ROWS A,C - FULLY LOADED

BODY VARIATION:
 A0 = STANDARD
 AM = SPECIAL MOUNTING

CONNECTOR STYLE:
 R = RECEPTACLE



mat'l. code		surface ISO 1302 ✓		tolerance ISO 406 ISO 1101		projection INCH/MM		product family DIN	
ltr	ecn no	dr	date	tolerances unless otherwise specified		linear .XX±.01/.3		title GUIDE DIN, VERTICAL RECEPTACLE	
1	ECN3281	JW	8/07/95	angles		.XXX±.005/.13		scale 2:1	
C	V20210	TAB	2/01/02	dr	DHR	1/06/95		dwg no sheet 1 of 1 size	
D	M06-0330	AGS	8/28/06	0°±2'	enr	1/27/95		SE96179 A3	
				chr	DHR	1/06/95		type Product Customer Drawing	
				appd	PL	2/24/95			
sheet index	revision sheet	D	1						