

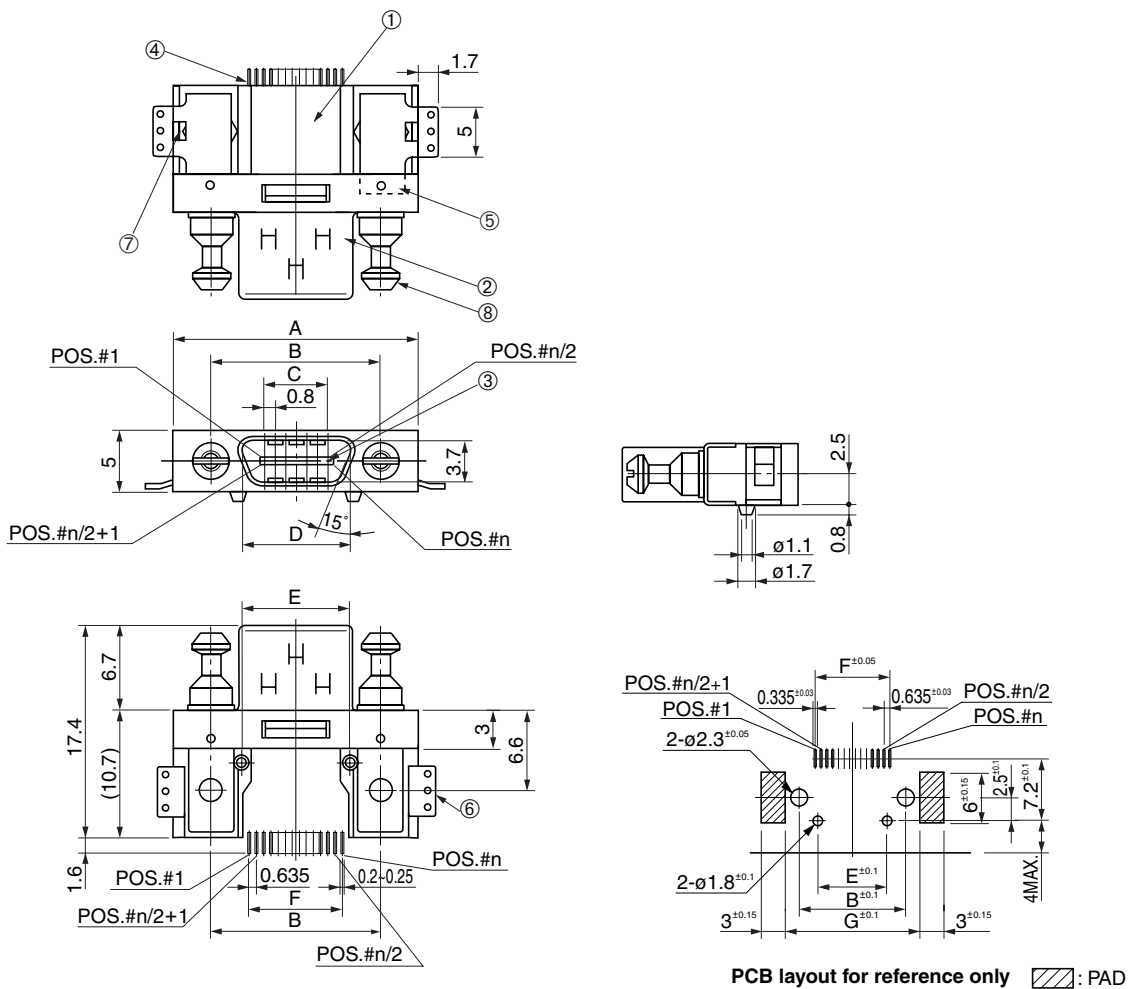
# Right-angle SMT type male connector for PCBs HDR-EA( )LMYPG1-( ) ( )



● Configuration of product Part No.

## HDR- EA ( ) LMY P G1- ( ) ( )

- |                                 |   |
|---------------------------------|---|
| ① Series name                   | ⑥ Lock screw                              |
| ② Contact pitch: 0.635 mm       | Blank : None                              |
| ③ No. of contacts: 14 or 26     | SLE : Provided                            |
| ④ Type of contact               | ⑦ Length of lock screw                    |
| LMY: Right-angle SMT type, male | E: 6.6 (standard)                         |
| ⑤ Contact Plating               | K: 3.3 (for HDR-E ( ) LPA-LS,<br>HDR-LSA) |
| G1: 0.76 μm or more Gold plate  | Compatible with B-to-B and B-to-C         |



● Components

①	Insulator A
②	Shell
③	Contacts
④	Insulator B
⑤	Square nuts
⑥	Hold down
⑦	Hex nuts
⑧	Lock screw

● Dimensions

Part No.	A	B	C	D	E	F	G
HDR-EA14LMYPG1-( ) ( )	20.0	14.4	4.8	9	9.2	8.255	19.0
HDR-EA26LMYPG1-( ) ( )	24.8	19.2	9.6	13.8	14	15.875	23.8

Mating connector: HDR series IDC type or solder type female cable connector

For use with housing: -SLE: HDR series vertical housing

-SLK: HDR series vertical housing -LS, -LSA