

**.480" HEIGHT PROFILE  
ALL PLASTIC PRESS FIT  
FEMALE RECEPTACLES  
FOR PCB MOUNTING**



**PHYSICAL PROPERTIES**

INSULATION MATERIAL: Glass filled polyester rated UL 94V-0  
 COLOR: Black  
 CONTACTS: High strength copper alloy  
 DURABILITY: Up to 300 insertions and withdrawals without degradation of performance, dependent upon contact plating thickness selected

**ELECTRICAL PROPERTIES**

OPERATING VOLTAGE: 600 VDC (sea level)  
 CURRENT RATING: 5 Amperes  
 CONTACT RESISTANCE: 10 milliohms max. @ rated current  
 INSULATION RESISTANCE: 5000 megohms minimum  
 DIELECTRIC WITHSTANDING VOLTAGE: 1000 VAC minimum

**ENVIRONMENTAL PROPERTIES**

TEMPERATURE RATING: -55°C TO 125°C

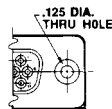
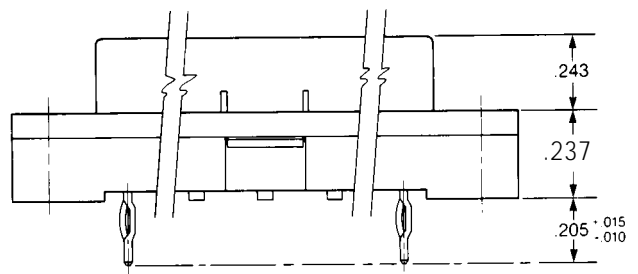
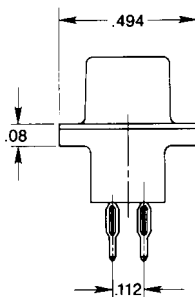
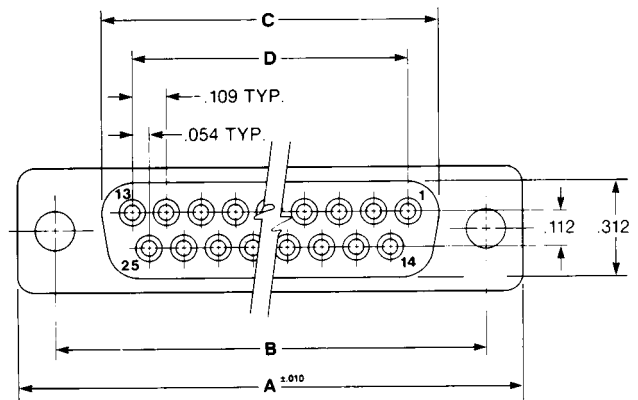
**APPLICATION TOOLING**

Mass Insertion Press Fit Tool:

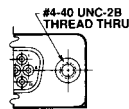
- 09 pos. 9823501
- 15 pos. 9823502
- 25 pos. 9823503
- 37 pos. 9823504

REMOVAL TOOL: Part # 98180

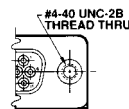
CAP REMOVAL TOOL: Part # 98175



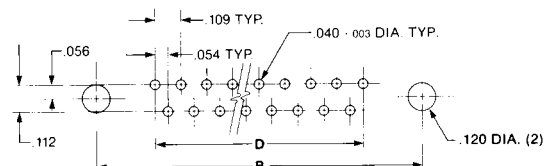
**MOUNTING STYLE A  
FLUSH**



**MOUNTING STYLE B  
THREADED STANDOFF**



**MOUNTING STYLE C  
FLUSH INSERT**



**P.C. BOARD HOLE PATTERN**

**Ordering Information**

NUMBER OF CONTACTS	BASIC CONNECTOR W/ .120" DIA. THRU HOLES	CATALOG NUMBER BY MOUNTING STYLE		DIMENSIONS			
		4-40 THREADED STANDOFF	4-40 FLUSH THREADED INSERT	A	B	C	D
9	H2R09PF29A	H2R09PF29B	H2R09PF29C	1.224	.984	.646	.436
15	H2R15PF29A	H2R15PF29B	H2R15PF29C	1.552	1.312	.974	.763
25	H2R25PF29A	H2R25PF29B	H2R25PF29C	2.092	1.852	1.514	1.308
37	H2R37PF29A	H2R37PF29B	H2R37PF29C	2.740	2.500	2.162	1.962

**NOTE: Add suffix S for metal snap latch. Not available on basic connector.**