

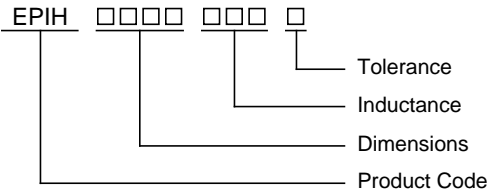


Applications :
LCD circuits, notebooks, personal computers, gaming machines,
portable terminal equipment, power supplies, automobile cameras

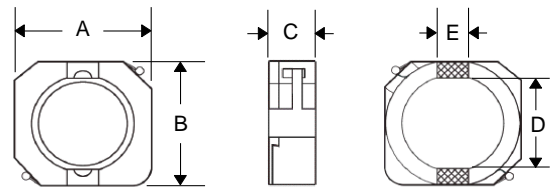
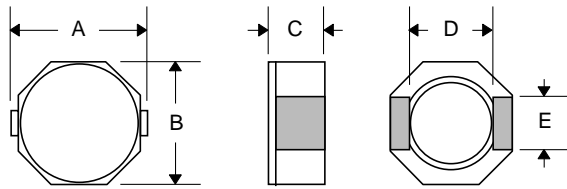
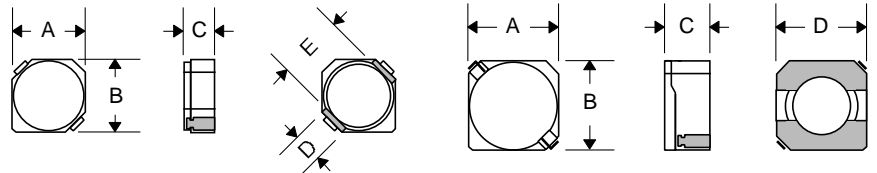


Operating/Storage Temperature : -40°C to +125°C
Wire : Insulated Copper
Packaging : 1,000/Reel
Terminal : Ag/Ni/Sn
Material : Ferrite

Product Identification



Shape and Dimension



Package Dimensions

Type	A Inches Max. (mm Max.)	B Inches Max. (mm Max.)	C Inches Max. (mm Max.)	D Inches Typ. (mm Typ.)	E Inches Typ. (mm Typ.)
EPIH2D11	.125 (3.20)	.125 (3.20)	.051 (1.30)	.039 (1.00)	.083 (2.10)
EPIH2D14	.125 (3.20)	.125 (3.20)	.063 (1.60)	.039 (1.00)	.083 (2.10)
EPIH2D18	.125 (3.20)	.125 (3.20)	.079 (2.00)	.039 (1.00)	.083 (2.10)
EPIH3D11	.157 (4.00)	.157 (4.00)	.051 (1.30)	.043 (1.10)	.110 (2.80)
EPIH3D16	.157 (4.00)	.157 (4.00)	.075 (1.90)	.043 (1.10)	.110 (2.80)
EPIH3D28	.157 (4.00)	.157 (4.00)	.118 (3.00)	.043 (1.10)	.110 (2.80)
EPIH4D18	.197 (5.00)	.197 (5.00)	.079 (2.00)	.177 (4.50)	.059 (1.50)
EPIH4D28	.197 (5.00)	.197 (5.00)	.118 (3.00)	.177 (4.50)	.059 (1.50)
EPIH5D18	.236 (6.00)	.236 (6.00)	.079 (2.00)	.216 (5.50)	.079 (2.00)
EPIH5D28	.236 (6.00)	.236 (6.00)	.118 (3.00)	.216 (5.50)	.079 (2.00)
EPIH6D28	.275 (7.00)	.275 (7.00)	.118 (3.00)	.256 (6.50)	.079 (2.00)
EPIH6D38	.275 (7.00)	.275 (7.00)	.157 (4.00)	.256 (6.50)	.079 (2.00)
EPIH8D28	.354 (9.00)	.327 (8.30)	.118 (3.00)	2.48 (6.30)	.157 (4.00)
EPIH8D38	.354 (9.00)	.327 (8.30)	.157 (4.00)	2.48 (6.30)	.157 (4.00)
EPIH8D43	.354 (9.00)	.327 (8.30)	.177 (4.50)	2.48 (6.30)	.157 (4.00)
EPIH10D40	.402 (10.20)	.410 (10.40)	.158 (4.00)	.311 (7.90)	.126 (3.20)

Unless Otherwise Specified Dimensions are in Inches /mm ± .010 / .25



Electrical Characteristics (EPIH2D11 Type)

Part Number	Inductance (µH)	Test Frequency (KHz @ 0.1 V)	DC Resistance (m Max.)	Isat (Amps Max.)	Irms (Amps Typ.)
EPIH2D11-1R5 □	1.50	100	68	0.90	1.48
EPIH2D11-2R2 □	2.20	100	98	0.78	1.27
EPIH2D11-3R3 □	3.30	100	123	0.60	1.02
EPIH2D11-4R7 □	4.70	100	170	0.50	0.88
EPIH2D11-6R8 □	6.80	100	260	0.44	0.78
EPIH2D11-100 □	10.0	100	400	0.35	0.65

Electrical Characteristics (EPIH2D14 Type)

Part Number	Inductance (µH)	Test Frequency (KHz @ 0.1 V)	DC Resistance (m Max.)	Isat (Amps Max.)	Irms (Amps Typ.)
EPIH2D14-1R5 □	1.50	100	63	1.80	2.00
EPIH2D14-1R8 □	1.80	100	75	1.65	1.80
EPIH2D14-2R2 □	2.20	100	94	1.50	1.60
EPIH2D14-2R7 □	2.70	100	106	1.35	1.40
EPIH2D14-3R3 □	3.30	100	125	1.20	1.24
EPIH2D14-3R9 □	3.90	100	138	1.10	1.12
EPIH2D14-4R7 □	4.70	100	169	1.00	1.00
EPIH2D14-5R6 □	5.60	100	188	0.95	0.98
EPIH2D14-6R8 □	6.80	100	213	0.85	0.92
EPIH2D14-8R2 □	8.20	100	281	0.80	0.80
EPIH2D14-100 □	10.0	100	294	0.70	0.76
EPIH2D14-120 □	12.0	100	394	0.62	0.64

Electrical Characteristics (EPIH2D18 Type)

Part Number	Inductance (µH)	Test Frequency (KHz @ 0.1 V)	DC Resistance (m Max.)	Isat (Amps Max.)	Irms (Amps Typ.)
EPIH2D18-2R2 □	2.20	100	41	0.85	2.30
EPIH2D18-3R3 □	3.30	100	54	0.75	2.10
EPIH2D18-4R7 □	4.70	100	78	0.63	1.65
EPIH2D18-6R8 □	6.80	100	106	0.52	1.32
EPIH2D18-100 □	10.0	100	180	0.43	1.00
EPIH2D18-150 □	15.0	100	220	0.35	0.80
EPIH2D18-220 □	22.0	100	320	0.30	0.68
EPIH2D18-330 □	33.0	100	460	0.24	0.56
EPIH2D18-470 □	47.0	100	660	0.20	0.48

Electrical Characteristics (EPIH3D11 Type)

Part Number	Inductance (µH)	Test Frequency (KHz @ 0.1 V)	DC Resistance (m Max.)	Isat (Amps Max.)	Irms (Amps Typ.)
EPIH3D11-1R0 □	1.00	100	70	1.36	1.71
EPIH3D11-1R5 □	1.50	100	87	1.12	1.40
EPIH3D11-2R2 □	2.20	100	120	0.96	1.21
EPIH3D11-3R3 □	3.30	100	173	0.72	0.91
EPIH3D11-4R7 □	4.70	100	236	0.64	0.81
EPIH3D11-6R8 □	6.80	100	289	0.51	0.64
EPIH3D11-100 □	10.0	100	395	0.44	0.55
EPIH3D11-150 □	15.0	100	605	0.34	0.43
EPIH3D11-220 □	22.0	100	920	0.27	0.34
EPIH3D11-330 □	33.0	100	1520	0.19	0.24
EPIH3D11-470 □	47.0	100	2380	0.14	0.18
EPIH3D11-680 □	68.0	100	3050	0.11	0.14
EPIH3D11-101 □	100.0	100	3650	0.08	0.10



Electrical Characteristics (EPIH3D16 Type)

Part Number	Inductance (µH)	Test Frequency (KHz @ 0.1 V)	DC Resistance (m Max.)	Isat (Amps Max.)	Irms (Amps Typ.)
EPIH3D16-3R3 □	3.3	100	66	0.80	2.00
EPIH3D16-3R9 □	3.9	100	81	0.75	1.75
EPIH3D16-4R7 □	4.7	100	91	0.68	1.72
EPIH3D16-5R6 □	5.6	100	102	0.62	1.64
EPIH3D16-6R8 □	6.8	100	130	0.58	1.30
EPIH3D16-8R2 □	8.2	100	140	0.51	1.28
EPIH3D16-100 □	10.0	100	190	0.46	1.07
EPIH3D16-120 □	12.0	100	205	0.42	0.98
EPIH3D16-150 □	15.0	100	272	0.38	0.87
EPIH3D16-180 □	18.0	100	327	0.34	0.76
EPIH3D16-220 □	22.0	100	356	0.31	0.66
EPIH3D16-270 □	27.0	100	470	0.28	0.60
EPIH3D16-330 □	33.0	100	560	0.26	0.55
EPIH3D16-390 □	39.0	100	700	0.24	0.47
EPIH3D16-470 □	47.0	100	755	0.21	0.45

Electrical Characteristics (EPIH3D28 Type)

Part Number	Inductance (µH)	Test Frequency (KHz @ 0.1 V)	DC Resistance (m Max.)	Isat (Amps Max.)	Irms (Amps Typ.)
EPIH3D28-100 □	10.0	100	92	0.500	1.52
EPIH3D28-120 □	12.0	100	100	0.450	1.48
EPIH3D28-150 □	15.0	100	113	0.400	1.44
EPIH3D28-180 □	18.0	100	125	0.350	1.37
EPIH3D28-220 □	22.0	100	146	0.330	1.28
EPIH3D28-270 □	27.0	100	176	0.290	1.18
EPIH3D28-330 □	33.0	100	214	0.280	1.15
EPIH3D28-390 □	39.0	100	225	0.250	1.00
EPIH3D28-470 □	47.0	100	304	0.230	0.81
EPIH3D28-560 □	56.0	100	324	0.200	0.76
EPIH3D28-680 □	68.0	100	472	0.185	0.60
EPIH3D28-820 □	82.0	100	539	0.172	0.58
EPIH3D28-101 □	100.0	100	608	0.160	0.52
EPIH3D28-121 □	120.0	100	757	0.136	0.50
EPIH3D28-151 □	150.0	100	882	0.124	0.48
EPIH3D28-181 □	180.0	100	1130	0.119	0.42
EPIH3D28-221 □	220.0	100	1269	0.116	0.36

Electrical Characteristics (EPIH4D18 Type)

Part Number	Inductance (µH)	Test Frequency (KHz @ 0.1 V)	DC Resistance (Max.)	Rated Current (Amps Max.)
EPIH4D18-1R0 □	1.0	100	0.045	1.72
EPIH4D18-2R2 □	2.2	100	0.075	1.32
EPIH4D18-2R7 □	2.7	100	0.105	1.28
EPIH4D18-3R3 □	3.3	100	0.110	1.04
EPIH4D18-3R9 □	3.9	100	0.155	0.88
EPIH4D18-4R7 □	4.7	100	0.162	0.84
EPIH4D18-5R6 □	5.6	100	0.170	0.80
EPIH4D18-6R8 □	6.8	100	0.200	0.76
EPIH4D18-8R2 □	8.2	100	0.245	0.68
EPIH4D18-100 □	10.0	100	0.200	0.61
EPIH4D18-120 □	12.0	100	0.210	0.56
EPIH4D18-150 □	15.0	100	0.240	0.50
EPIH4D18-180 □	18.0	100	0.338	0.48
EPIH4D18-220 □	22.0	100	0.397	0.41
EPIH4D18-270 □	27.0	100	0.441	0.35
EPIH4D18-330 □	33.0	100	0.694	0.32
EPIH4D18-390 □	39.0	100	0.709	0.30
EPIH4D18-470 □	47.0	100	0.922	0.28
EPIH4D18-560 □	56.0	100	1.080	0.26
EPIH4D18-680 □	68.0	100	1.300	0.24
EPIH4D18-820 □	82.0	100	1.550	0.22
EPIH4D18-101 □	100.0	100	1.730	0.20

Electrical Characteristics (EPIH4D28 Type)

Part Number	Inductance (µH)	Test Frequency (KHz @ 0.1 V)	DC Resistance (Max.)	Rated Current (Amps Max.)
EPIH4D28-1R2 □	1.2	100	0.024	2.56
EPIH4D28-1R8 □	1.8	100	0.028	2.20
EPIH4D28-2R2 □	2.2	100	0.031	2.04
EPIH4D28-2R7 □	2.7	100	0.043	1.60
EPIH4D28-3R3 □	3.3	100	0.049	1.57
EPIH4D28-3R9 □	3.9	100	0.065	1.44
EPIH4D28-4R7 □	4.7	100	0.072	1.32
EPIH4D28-5R6 □	5.6	100	0.101	1.17
EPIH4D28-6R8 □	6.8	100	0.109	1.12
EPIH4D28-8R2 □	8.2	100	0.118	1.04
EPIH4D28-100 □	10.0	100	0.128	1.00
EPIH4D28-120 □	12.0	100	0.132	0.84
EPIH4D28-150 □	15.0	100	0.149	0.76
EPIH4D28-180 □	18.0	100	0.166	0.72
EPIH4D28-220 □	22.0	100	0.235	0.70
EPIH4D28-270 □	27.0	100	0.261	0.58
EPIH4D28-330 □	33.0	100	0.378	0.56
EPIH4D28-390 □	39.0	100	0.384	0.50
EPIH4D28-680 □	68.0	100	0.699	0.35
EPIH4D28-820 □	82.0	100	0.915	0.32
EPIH4D28-101 □	100.0	100	1.020	0.29
EPIH4D28-121 □	120.0	100	1.270	0.27
EPIH4D28-151 □	150.0	100	1.350	0.24

Electrical Characteristics (EPIH5D18 Type)

Part Number	Inductance (µH)	Test Frequency (KHz @ 0.1 V)	DC Resistance (Max.)	Rated Current (Amps Max.)
EPIH5D18-4R1 □	4.1	10	0.057	1.95
EPIH5D18-5R4 □	5.4	10	0.076	1.60
EPIH5D18-6R2 □	6.2	10	0.096	1.40
EPIH5D18-8R9 □	8.9	10	0.116	1.25
EPIH5D18-100 □	10.0	10	0.124	1.20
EPIH5D18-120 □	12.0	10	0.153	1.10
EPIH5D18-150 □	15.0	10	0.196	0.97
EPIH5D18-180 □	18.0	10	0.210	0.85
EPIH5D18-220 □	22.0	10	0.290	0.80
EPIH5D18-270 □	27.0	10	0.330	0.75
EPIH5D18-330 □	33.0	10	0.386	0.65
EPIH5D18-390 □	39.0	10	0.520	0.57
EPIH5D18-470 □	47.0	10	0.595	0.54
EPIH5D18-560 □	56.0	10	0.665	0.50
EPIH5D18-680 □	68.0	10	0.840	0.43
EPIH5D18-820 □	82.0	10	0.978	0.41
EPIH5D18-101 □	100	10	1.200	0.36
EPIH5D18-121 □	120	10	1.500	0.33
EPIH5D18-151 □	150	10	1.710	0.31
EPIH5D18-181 □	180	10	2.240	0.28
EPIH5D18-221 □	220	10	2.440	0.23
EPIH5D18-331 □	330	10	4.340	0.18

Electrical Characteristics (EPIH5D28 Type)

Part Number	Inductance (µH)	Test Frequency (KHz @ 0.1 V)	DC Resistance (Max.)	Rated Current (Amps Max.)
EPIH5D28-2R6 □	2.6	10	0.018	2.60
EPIH5D28-3R0 □	3.0	10	0.024	2.40
EPIH5D28-4R2 □	4.2	10	0.031	2.20
EPIH5D28-5R3 □	5.3	10	0.038	1.90
EPIH5D28-6R2 □	6.2	10	0.045	1.80
EPIH5D28-8R2 □	8.2	10	0.053	1.60
EPIH5D28-100 □	10.0	10	0.065	1.30
EPIH5D28-120 □	12.0	10	0.076	1.20
EPIH5D28-150 □	15.0	10	0.103	1.10
EPIH5D28-180 □	18.0	10	0.110	1.00
EPIH5D28-220 □	22.0	10	0.122	0.90
EPIH5D28-270 □	27.0	10	0.175	0.85
EPIH5D28-330 □	33.0	10	0.189	0.75
EPIH5D28-390 □	39.0	10	0.212	0.70
EPIH5D28-470 □	47.0	10	0.260	0.62
EPIH5D28-560 □	56.0	10	0.305	0.58
EPIH5D28-680 □	68.0	10	0.355	0.52
EPIH5D28-820 □	82.0	10	0.463	0.46

Electrical Characteristics (EPIH5D28 Type)

Part Number	Inductance (µH)	Test Frequency (KHz @ 0.1 V)	DC Resistance (Max.)	Rated Current (Amps Max.)
EPIH5D28-101 □	100.0	10	0.520	0.42
EPIH5D28-121 □	120.0	10	0.560	0.40
EPIH5D28-151 □	150.0	10	0.680	0.35
EPIH5D28-181 □	180.0	10	0.930	0.32
EPIH5D28-221 □	220.0	10	1.150	0.30
EPIH5D28-271 □	270.0	10	1.560	0.27
EPIH5D28-331 □	330.0	10	1.980	0.25
EPIH5D28-391 □	390.0	10	2.500	0.22
EPIH5D28-471 □	470.0	10	2.700	0.20
EPIH5D28-561 □	560.0	10	3.120	0.18
EPIH5D28-681 □	680.0	10	4.150	0.16

Electrical Characteristics (EPIH6D28 Type)

Part Number	Inductance (µH)	Test Frequency (KHz @ 0.1 V)	DC Resistance (Max.)	Rated Current (Amps Max.)
EPIH6D28-3R0 □	3.0	10	0.024	3.00
EPIH6D28-3R9 □	3.9	10	0.027	2.60
EPIH6D28-5R0 □	5.0	10	0.031	2.40
EPIH6D28-6R0 □	6.0	10	0.035	2.25
EPIH6D28-7R3 □	7.3	10	0.054	2.10
EPIH6D28-8R6 □	8.6	10	0.058	1.85
EPIH6D28-100 □	10.0	10	0.065	1.70
EPIH6D28-120 □	12.0	10	0.070	1.55
EPIH6D28-150 □	15.0	10	0.084	1.40
EPIH6D28-180 □	18.0	10	0.095	1.32
EPIH6D28-220 □	22.0	10	0.128	1.20
EPIH6D28-270 □	27.0	10	0.124	1.05
EPIH6D28-330 □	33.0	10	0.165	0.97
EPIH6D28-390 □	39.0	10	0.210	0.86
EPIH6D28-470 □	47.0	10	0.238	0.80
EPIH6D28-560 □	56.0	10	0.277	0.73
EPIH6D28-680 □	68.0	10	0.304	0.65
EPIH6D28-820 □	82.0	10	0.390	0.60
EPIH6D28-101 □	100.0	10	0.535	0.54
EPIH6D28-121 □	120.0	10	0.750	0.51
EPIH6D28-151 □	150.0	10	0.950	0.47
EPIH6D28-181 □	180.0	10	1.200	0.41
EPIH6D28-221 □	220.0	10	1.500	0.37
EPIH6D28-271 □	270.0	10	1.700	0.33
EPIH6D28-331 □	330.0	10	2.150	0.28
EPIH6D28-391 □	390.0	10	2.250	0.27
EPIH6D28-471 □	470.0	10	3.150	0.21
EPIH6D28-561 □	560.0	10	3.750	0.20
EPIH6D28-681 □	680.0	10	5.150	0.20

Electrical Characteristics (EPIH6D38 Type)

Part Number	Inductance (µH)	Test Frequency (KHz @ 0.1 V)	DC Resistance (Max.)	Rated Current (Amps Max.)
EPIH6D38-3R3 □	3.3	10	0.020	3.50
EPIH6D38-5R0 □	5.0	10	0.024	2.90
EPIH6D38-6R2 □	6.2	10	0.027	2.50
EPIH6D38-7R4 □	7.4	10	0.031	2.30
EPIH6D38-8R7 □	8.7	10	0.034	2.20
EPIH6D38-100 □	10.0	10	0.038	2.00
EPIH6D38-120 □	12.0	10	0.053	1.70
EPIH6D38-150 □	15.0	10	0.057	1.60
EPIH6D38-180 □	18.0	10	0.092	1.50
EPIH6D38-220 □	22.0	10	0.096	1.30
EPIH6D38-270 □	27.0	10	0.109	1.20
EPIH6D38-330 □	33.0	10	0.124	1.10
EPIH6D38-390 □	39.0	10	0.138	1.00
EPIH6D38-470 □	47.0	10	0.155	0.95
EPIH6D38-560 □	56.0	10	0.202	0.85
EPIH6D38-680 □	68.0	10	0.234	0.75
EPIH6D38-820 □	82.0	10	0.324	0.65
EPIH6D38-101 □	100.0	10	0.358	0.59
EPIH6D38-121 □	120.0	10	0.470	0.54
EPIH6D38-151 □	150.0	10	0.580	0.49
EPIH6D38-181 □	180.0	10	0.690	0.43

Electrical Characteristics (EPIH6D38 Type)

Part Number	Inductance (μH)	Test Frequency (KHz @ 0.1 V)	DC Resistance (Max.)	Rated Current (Amps Max.)
EPIH6D38-221 □	220.0	10	0.890	0.43
EPIH6D38-271 □	270.0	10	1.290	0.40
EPIH6D38-331 □	330.0	10	1.700	0.37
EPIH6D38-391 □	390.0	10	1.750	0.34
EPIH6D38-471 □	470.0	10	2.200	0.32
EPIH6D38-561 □	560.0	10	2.850	0.29
EPIH6D38-681 □	680.0	10	3.200	0.25
EPIH6D38-821 □	820.0	10	4.050	0.22
EPIH6D38-102 □	1000.0	10	4.700	0.20

Electrical Characteristics (EPIH8D28 Type)

Part Number	Inductance (μH)	Test Frequency (KHz @ 0.1 V)	DC Resistance (m Max.)	Isat (Amps Max.)	Irms (Amps Typ.)
EPIH8D28-2R5 □	2.50	100	15.6	4.50	6.40
EPIH8D28-3R3 □	3.30	100	18.2	4.00	6.00
EPIH8D28-4R7 □	4.70	100	24.7	3.40	4.50
EPIH8D28-7R3 □	7.30	100	39	2.80	3.40
EPIH8D28-100 □	10.0	100	47	2.50	3.20
EPIH8D28-150 □	15.0	100	69	1.90	2.35
EPIH8D28-220 □	22.0	100	99	1.60	1.85
EPIH8D28-330 □	33.0	100	156	1.30	1.49
EPIH8D28-470 □	47.0	100	195	1.15	1.300
EPIH8D28-680 □	68.0	100	286	0.92	0.98
EPIH8D28-101 □	100.0	100	980	0.75	0.80

Electrical Characteristics (EPIH8D38 Type)

Part Number	Inductance (μH)	Test Frequency (KHz @ 0.1 V)	DC Resistance (m Max.)	Isat (Amps Max.)	Irms (Amps Typ.)
EPIH8D38-1R8 □	1.80	100	15.6	6.20	6.80
EPIH8D38-2R0 □	2.00	100	17.5	5.50	6.00
EPIH8D38-3R5 □	3.50	100	24	4.40	5.20
EPIH8D38-4R7 □	4.70	100	29	4.00	4.40
EPIH8D38-6R0 □	6.00	100	32	3.50	4.00
EPIH8D38-100 □	10.0	100	48	2.60	3.20
EPIH8D38-150 □	15.0	100	67	2.30	2.50
EPIH8D38-220 □	22.0	100	105	1.88	2.00
EPIH8D38-330 □	33.0	100	157	1.52	1.60
EPIH8D38-470 □	47.0	100	189	1.288	1.42
EPIH8D38-680 □	68.0	100	290	1.10	1.08
EPIH8D38-101 □	100.0	100	410	0.88	0.88

Electrical Characteristics (EPIH8D43 Type)

Part Number	Inductance (μH)	Test Frequency (KHz @ 0.1 V)	DC Resistance (m Max.)	Isat (Amps Max.)	Irms (Amps Typ.)
EPIH8D43-2R0 □	2.00	100	14	7.00	5.50
EPIH8D43-3R9 □	3.90	100	19	5.90	4.50
EPIH8D43-4R7 □	4.70	100	22	5.60	4.10
EPIH8D43-6R8 □	6.80	100	25	4.40	3.90
EPIH8D43-100 □	10.0	100	36	4.00	3.20
EPIH8D43-150 □	15.0	100	53	2.90	2.30
EPIH8D43-220 □	22.0	100	75	2.60	1.80
EPIH8D43-330 □	33.0	100	125	2.20	1.40
EPIH8D43-470 □	47.0	100	150	1.80	1.30
EPIH8D43-680 □	68.0	100	240	1.50	1.00
EPIH8D43-101 □	100.0	100	360	1.30	0.80

Electrical Characteristics (EPIH10D40 Type)

Part Number	Lo Inductance ($\mu\text{H} \pm 20\%$) at 100 KHz, 0.1V,0A	DCR Typical 25° C (m Max.)	SRF Typical (MHz)	Isat (A Max.)	I _{rms} (A)	
					20 °C rise	40 °C rise
EPIH10D40-1R5 <input type="checkbox"/>	1.5	8.1	81	8.30	5.60	7.85
EPIH10D40-2R5 <input type="checkbox"/>	2.5	10.0	61	7.50	4.65	6.65
EPIH10D40-3R8 <input type="checkbox"/>	3.8	13.0	45	6.00	4.25	6.05
EPIH10D40-5R2 <input type="checkbox"/>	5.2	22.0	37	5.50	3.60	5.10
EPIH10D40-7R0 <input type="checkbox"/>	7.0	27.0	33	4.80	3.10	4.35
EPIH10D40-100 <input type="checkbox"/>	10.0	35.0	29	4.40	2.90	4.05
EPIH10D40-120 <input type="checkbox"/>	12.0	41.0	25	4.02	2.85	4.00
EPIH10D40-150 <input type="checkbox"/>	15.0	50.0	21	3.60	2.70	3.80
EPIH10D40-180 <input type="checkbox"/>	18.0	65.0	18	3.20	2.25	3.35
EPIH10D40-220 <input type="checkbox"/>	22.0	73.0	15	2.90	1.90	2.85
EPIH10D40-270 <input type="checkbox"/>	27.0	89.0	15	2.54	1.65	2.35
EPIH10D40-330 <input type="checkbox"/>	33.0	93.0	13	2.30	1.60	2.30
EPIH10D40-390 <input type="checkbox"/>	39.0	112.0	12	2.20	1.55	2.25
EPIH10D40-470 <input type="checkbox"/>	47.0	128.0	11	2.10	1.45	2.20
EPIH10D40-560 <input type="checkbox"/>	56.0	180.0	11	1.92	1.40	1.85
EPIH10D40-680 <input type="checkbox"/>	68.0	213.0	10	1.50	1.15	1.75
EPIH10D40-820 <input type="checkbox"/>	82.0	261.0	8	1.40	1.09	1.50
EPIH10D40-101 <input type="checkbox"/>	100.0	304.0	6	1.35	1.05	1.45
EPIH10D40-121 <input type="checkbox"/>	120.0	380.0	6	1.23	0.85	1.25
EPIH10D40-151 <input type="checkbox"/>	150.0	506.0	6	1.15	0.80	1.20
EPIH10D40-181 <input type="checkbox"/>	180.0	582.0	5	1.05	0.71	0.98
EPIH10D40-221 <input type="checkbox"/>	220.0	756.0	5	0.92	0.70	0.97
EPIH10D40-271 <input type="checkbox"/>	270.0	926.0	4	0.83	0.65	0.86
EPIH10D40-331 <input type="checkbox"/>	330.0	1090.0	4	0.70	0.50	0.69
EPIH10D40-391 <input type="checkbox"/>	390.0	1141.0	4	0.64	0.49	0.65
EPIH10D40-471 <input type="checkbox"/>	470.0	1243.0	3	0.58	0.45	0.63
EPIH10D40-561 <input type="checkbox"/>	560.0	1696.0	3	0.53	0.43	0.59
EPIH10D40-681 <input type="checkbox"/>	680.0	1926.0	3	0.48	0.36	0.50
EPIH10D40-821 <input type="checkbox"/>	820.0	2596.0	3	0.44	0.34	0.47
EPIH10D40-102 <input type="checkbox"/>	1000.0	2853.0	3	0.40	0.33	0.45