

Coaxial High Power Combiner

ZAPD-2-21-3W+ ZAPD-2-21-3W

2 Way-0° 50Ω 700 to 2100 MHz

Maximum Ratings

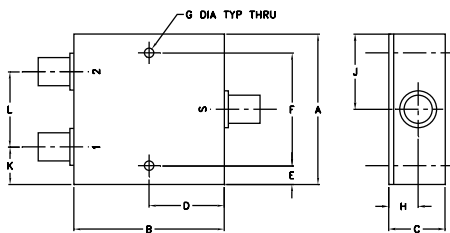
Operating Temperature	-55°C to 90°C
Storage Temperature	-55°C to 100°C

Permanent damage may occur if any of these limits are exceeded.

Coaxial Connections

SUM PORT	S
PORT 1	1
PORT 2	2

Outline Drawing



Outline Dimensions (inch/mm)

A	B	C	D	E	F	G			
2.00	2.00	.75	1.00	.13	1.750	.125			
50.80	50.80	19.05	25.40	3.30	44.45	3.18			
H	J	K	L				wt		
.39	1.00	.50	1.00				grams		
9.91	25.40	12.70	25.40				170.0		

Features

- wideband, 700-2100 MHz
- low insertion loss, 0.4 dB typ.
- good isolation, 25 dB typ.
- good amplitude unbalance, 0.05 dB typ. and phase unbalance, 0.7 deg. typ.

Applications

- LMDS • UHF
- VSAT • PCS
- GPS • cellular



SMA version shown
CASE STYLE: F53

Connectors	Model	Price	Qty.
N-TYPE	ZAPD-2-21-3W-N(+)	\$54.95	(1-9)
SMA	ZAPD-2-21-3W-S(+)	\$54.95	(1-9)

+ RoHS compliant in accordance with EU Directive (2002/95/EC)

The +Suffix identifies RoHS Compliance. See our web site for RoHS Compliance methodologies and qualifications.

High Power Combiner Electrical Specifications

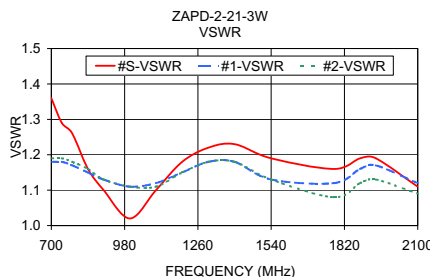
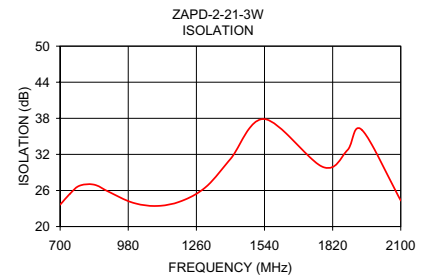
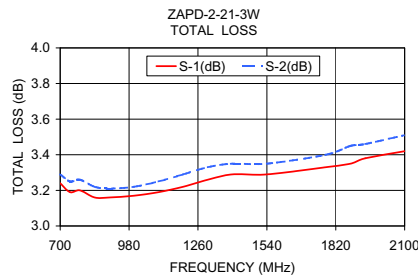
FREQ. RANGE (MHz)	ISOLATION (dB)		INSERTION LOSS (dB) ABOVE 3.0 dB		PHASE UNBALANCE (Degrees)		AMPLITUDE UNBALANCE (dB)		POWER INPUT ¹ (W)	
	Typ.	Min.	Typ.	Max.	Typ.	Max.	Typ.	Max.	as combiner ² Max.	as splitter Max.
700-2100	25	20	0.4	1.2	0.7	3.0	0.05	0.3	2.5	10

- Over -55°C to +55°C. Derate linearly to 20% of rating at 90°C
- As a combiner of non-coherent signals, max. power per port is power rating divided by number of ports.

Typical Performance Data

Frequency (MHz)	Total Loss ¹ (dB)		Amp. Unbalance (dB)	Isolation (dB)	Phase Unbalance (deg.)	VSWR S	VSWR 1	VSWR 2
	S-1	S-2						
700.00	3.24	3.29	0.05	23.63	0.45	1.36	1.18	1.19
740.00	3.19	3.25	0.06	25.44	0.45	1.29	1.18	1.19
780.00	3.20	3.26	0.05	26.79	0.48	1.26	1.17	1.18
840.00	3.16	3.22	0.05	26.97	0.51	1.16	1.15	1.16
900.00	3.16	3.21	0.05	25.78	0.56	1.10	1.13	1.13
1000.00	3.17	3.22	0.05	23.95	0.64	1.02	1.11	1.11
1100.00	3.19	3.25	0.06	23.43	0.61	1.10	1.12	1.11
1200.00	3.22	3.29	0.06	24.26	0.75	1.18	1.15	1.15
1300.00	3.26	3.33	0.06	26.61	0.81	1.22	1.18	1.18
1400.00	3.29	3.35	0.06	31.24	0.86	1.23	1.18	1.18
1540.00	3.29	3.35	0.06	37.88	0.94	1.19	1.13	1.13
1780.00	3.33	3.40	0.08	29.91	1.10	1.16	1.12	1.08
1880.00	3.35	3.45	0.09	32.67	1.15	1.19	1.16	1.12
1940.00	3.38	3.46	0.09	36.09	1.16	1.19	1.17	1.13
2100.00	3.42	3.51	0.09	24.32	1.31	1.11	1.12	1.09

1. Total Loss = Insertion Loss + 3dB splitter loss.



electrical schematic



For detailed performance specs & shipping online see web site

P.O. Box 350166, Brooklyn, New York 11235-0003 (718) 934-4500 Fax (718) 332-4661 The Design Engineers Search Engine Provides ACTUAL Data Instantly at minicircuits.com

Notes: 1. Performance and quality attributes and conditions not expressly stated in this specification sheet are intended to be excluded and do not form a part of this specification sheet. 2. Electrical specifications and performance data contained herein are based on Mini-Circuit's applicable established test performance criteria and measurement instructions. 3. The parts covered by this specification sheet are subject to Mini-Circuits standard limited warranty and terms and conditions (collectively, "Standard Terms"); Purchasers of this part are entitled to the rights and benefits contained therein. For a full statement of the Standard Terms and the exclusive rights and remedies thereunder, please visit Mini-Circuits' website at www.minicircuits.com/MCLStore/terms.jsp.

REV. B
M127604
ED-5741C/1
ZAPD-2-21-3W
HY/TD/CP/AM
100617