

# Leadless Power Inductors P•F-SS Series

## Features

This is a magnetically shielded surface-mount type inductor in which a ferrite drum core with winding is connected with surface mount type external electrodes and combined with a ring core.

## Applications

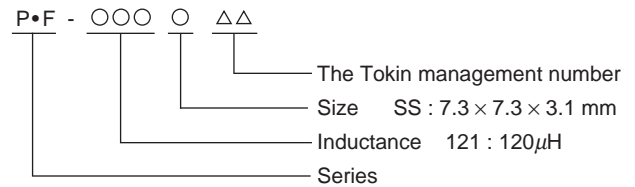
- D/D converters
- Transform chopper inductors



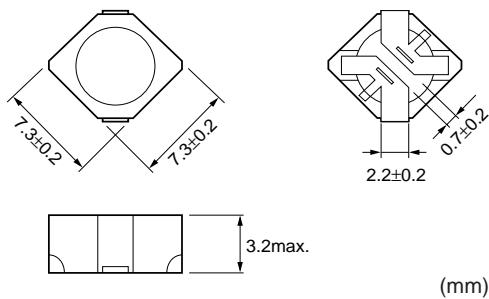
## Specifications

Model	Inductance ( $\mu\text{H}$ )	DC resistance ( $\Omega$ ) max.	Rated current (A)
PF-100SS	10 $\pm$ 20%	0.12	1.80
PF-120SS	12 $\pm$ 20%	0.14	1.60
PF-150SS	15 $\pm$ 20%	0.18	1.40
PF-180SS	18 $\pm$ 20%	0.22	1.22
PF-220SS	22 $\pm$ 20%	0.24	1.20
PF-330SS	33 $\pm$ 15%	0.35	0.95
PF-470SS	47 $\pm$ 15%	0.47	0.82
PF-680SS	68 $\pm$ 15%	0.71	0.65
PF-101SS	100 $\pm$ 10%	1.20	0.55
PF-121SS	120 $\pm$ 10%	1.40	0.45
PF-151SS	150 $\pm$ 10%	1.80	0.40
PF-221SS	220 $\pm$ 10%	2.40	0.35

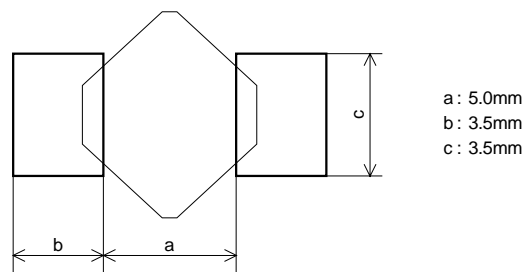
## Markings



## Shapes and Dimensions



## Recommended Pattern



## Note

- Operating temperature range    -25~+80°C
- Storage temperature range       -25~+85°C
- Tape and Reel Dimensions        Please order by referring to page 30, 31 and 32.
- Cautions for use                     Refer to pages 33.

Typical example of DC-superposed Characteristics

