

**SPECIFICATIONS**

**VR 372**

**Mechanical**

**Socket compression force:** 165N min., 372N max.  
**Durability:** 20 Cycles min.  
**Solder Ball Shear Force:** 500g min.

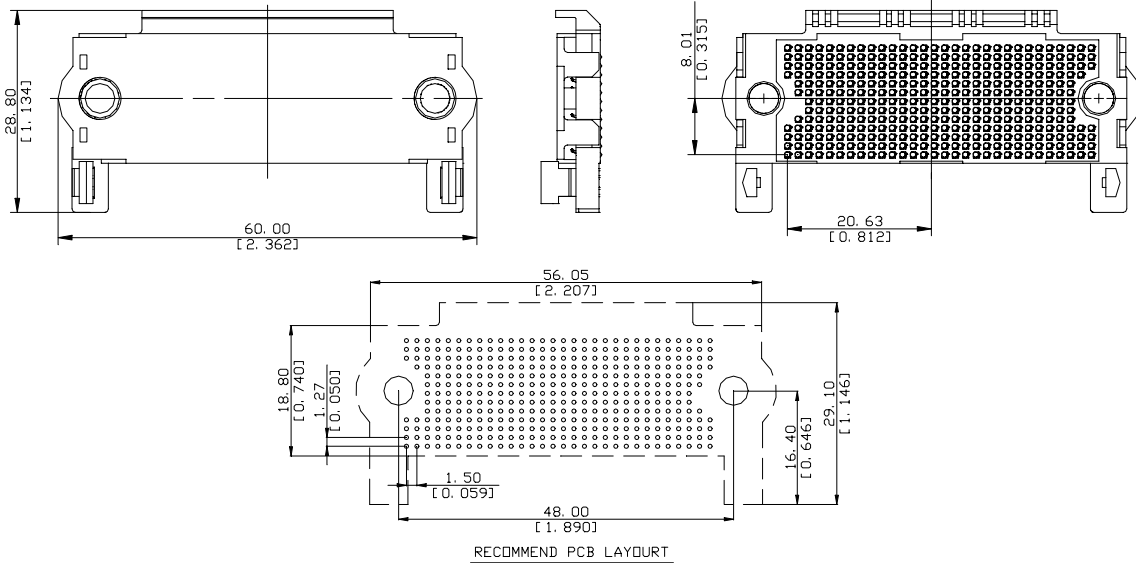
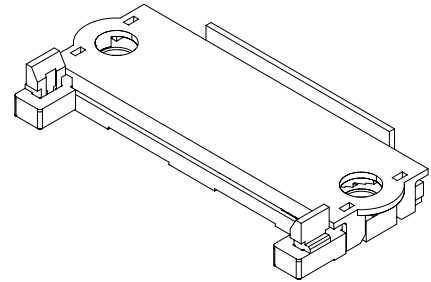
**LGA/BGA power connector**  
**LGA SMT Type**  
**1.27X1.5mm [.05X.06"] Pitch**  
**372 Pos.**

**Electrical**

**Contact Resistance :** 18 mΩ max.  
**Insulation Resistance:** 800mΩ min.  
**Dielectric Withstanding Voltage:** 360V RMS min.

**Physical**

**Housing:** Thermoplastic, UL 94V-0 rated, Black Color  
**Cap:** Thermoplastic, UL 94V-0 rated, Black Color  
**Contact:** Copper Alloy  
**Plating:** See "ORDERING INFORMATION"  
**Operating Temperature:** -55 to +110



**ORDERING INFORMATION**

**PRODUCT NO.: P E 0 3 7 2 0 3 - 1 3 6 1 - 2 1**

- Actual Loading
- Contacts No. 0372=372 Positions
- Solder Ball Type 0=Sn/Pb
- Cotacts Plating 3=30u" Au
- Grid Array Type 13=13x30 Grid Array
- Pick-up Design 1=Plastic Pick-up Cap
- Package 2=Tape&Reel
- Material of Contact 1=Copper Alloy
- With or Without Post 6=W/ Post