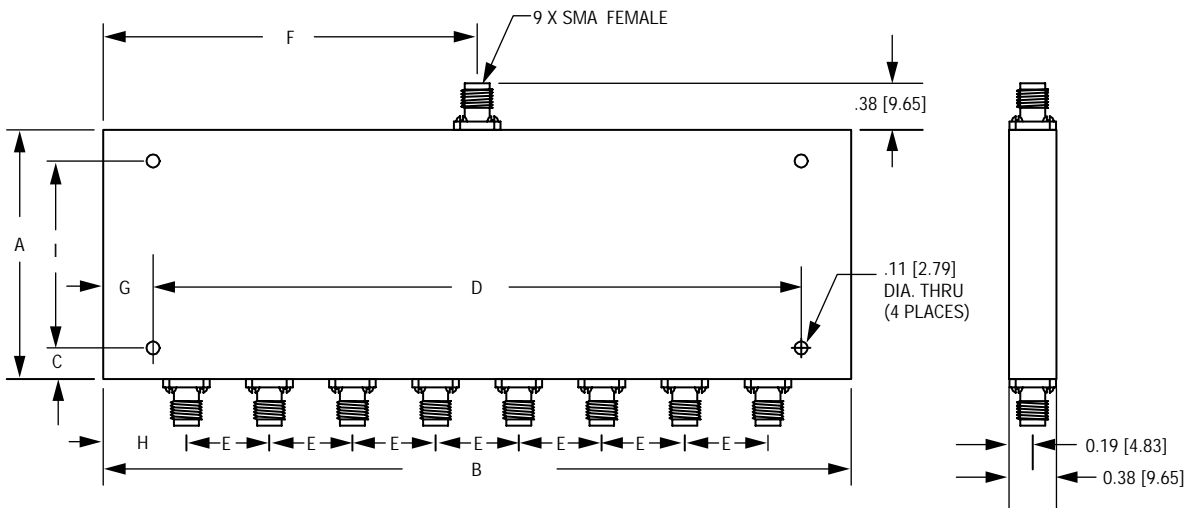


## 8-WAY POWER DIVIDERS – 30 WATT SPECIFICATIONS

FREQUENCY (GHz)	MODEL NUMBER	INSERTION LOSS (dB, Max.)	ISOLATION (dB, Typ.)	AMPLITUDE BALANCE (dB, Max.)	PHASE BALANCE (Deg. Max.)	INPUT VSWR	OUTPUT VSWR	POWER (Watts) (Max.)	OUTLINE (See Note)
0.5 – 1	PD8-500/1000-30S	0.6	20	0.2	4	1.4:1	1.2:1	30	3
1 – 2	PD8-1000/2000-30S	0.6	18	0.2	4	1.4:1	1.25:1	30	3
2 – 4	PD8-2000/4000-30S	1	18	0.4	5	1.6:1	1.3:1	30	2
4 – 8	PD8-4000/8000-30S	0.8	20	0.8	6	1.35:1	1.35:1	30	2
7 – 12.4	PD8-7000/12400-30S	0.8	16	0.6	6	1.55:1	1.45:1	30	1
12 – 18	PD8-12000/18000-30S	1.5	15	0.6	6	1.6:1	1.5:1	30	1
8 – 18	PD8-8000/18000-30S	2	15	0.6	6	1.6:1	1.5:1	30	1
2 – 18	PD8-2000/18000-30S	2.5	14	0.6	10	2.1:1	1.5:1	30	4

NOTE: 30 watts guaranteed into a 1.2:1 VSWR, 10 watts into a 2:1 VSWR and 1 watt into an infinite VSWR.

## 8-WAY POWER DIVIDERS – 30 WATT OUTLINE DRAWING



OUTLINE	DIMENSION								
	A	B	C	D	E	F	G	H	I
1	2.40 [60.96]	4.00 [101.60]	0.30 [7.62]	3.80 [96.52]	0.50 [12.70]	1.80 [45.72]	0.10 [2.54]	0.25 [6.35]	1.80 [45.72]
2	2.45 [62.23]	5.20 [132.08]	0.48 [12.19]	4.95 [125.73]	0.60 [15.24]	1.50 [38.10]	0.125 [3.175]	0.50 [12.70]	1.49 [37.85]
3	3.80 [96.52]	5.50 [139.70]	0.50 [12.70]	5.10 [129.54]	0.69 [17.53]	2.60 [66.04]	0.20 [5.08]	0.335 [8.509]	0.80 [20.32]
4	4.95 [125.73]	5.20 [132.08]	1.05 [26.67]	4.95 [125.73]	0.60 [15.24]	2.85 [72.39]	0.125 [3.175]	0.50 [12.70]	3.75 [95.25]

NOTE: DIMENSIONS SHOWN IN BRACKETS [ ] ARE IN MILLIMETERS.