

Humidity Sensors

■ HIS-02-E



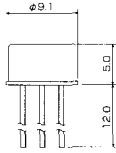
■ HSU-03-18



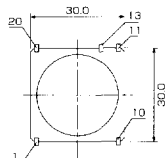
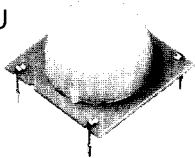
Dimensions(mm)	Item	Applications
HIS-02-E (W) (L) (t) 11.8×14.5×4.5	Working Temp.Range ; -20~60°C Working Humidity Range ; 20~90% RH Impedance ; 55kΩ (50±5%RH) Rated Voltage AC1V Sine wave and rectangular wave (Duty 1 : 1) Recommended Frequency 1kHz	Airconditioner. Dehumidifier. Humidifier. Fan Heater. Medical instruments. Printer. Duplicator. Warehouse. Greenhouse, etc.
HSU-03-18 (W) (L) (t) 18.0×34.0×10Max.	Working Temp.Range ; -20~60°C Working Humidity Range ; 20~90% RH Detective Output Voltage ; 40%RH : DC1.795V 60%RH : DC2.245V Rated Voltage ; DC5V ±5%	

Pyroelectric Infrared Sensors

■ PYS



■ PYU

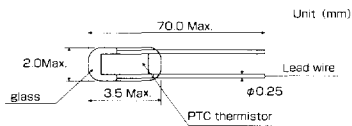


Type	Item	Applications
Sensors PYS Series	VsUP DC3.0~15.0V TOPR -25~+70°C TSTG -40~+100°C Rv 1200V/W Balance 10% Max. Package TO-5	Automatic door Light control Intruder alarm Visitor detection Toilet flush Auto ventilation Toy
Sensor units (with Fresnel lens) PYU Series	VsUP DC5.0V TOPR -20~+60°C No dew drops to be produced. TSTG -30~+70°C No dew drops to be produced. Output open collector Gain 54~68dB Timer 0~3 minutes. To be attached separately	

PTC Thermistors

■ Glass Seal Type

New



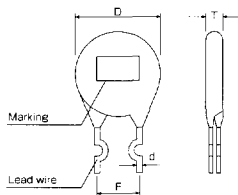
For High Thermal Protection

Part No.	Initial Characteristics					
	Resistance R ₂₅ (Ω)	Rated Voltage (V)	Max. Current (mA)	Curie Temp. (°C)	T.C.R. (%/°C)	Max. Operating Temp. (°C)
PDG-102Y200-03S□□	300~1000.0	DC 16	60.0	200	15.0	300
PDG-102Y250-03S□□	300~1000.0	DC 16	60.0	250	15.0	300

For Overcurrent Protection

Part No.	Initial Characteristics								Dimensions			
	Resistance R ₂₅		Max. Rated Voltage (V)	Max. Current (A)	Operating Current		Non-operating Current		D (mm) Max.	T (mm) Max.	Lead Wire (mm)	
	(Ω)	(%)			Temp. (°C)	Current (mA)	Temp. (°C)	Current (mA)			d	F
PCR-R55M100-15□□□□	0.55	±20	DC 16	5.0	25	2000	25	700	18.0	5.0	φ0.6	10.0
PCR-3R9M120-07□□□□	3.9	±20	DC 35	1.5	25	480	25	290	9.6	3.5	φ0.6	5.0
PCR-100M120-05□□□□	10.0	±20	DC 35	0.9	25	280	25	170	7.4	3.5	φ0.6	5.0
PCR-3R9M120-12□□□□	3.9	±20	DC 56	1.5	-10	800	60	340	13.0	5.0	φ0.6	5.0
PCR-090M120-12□□□□	9.0	±20	DC 56	2.9	25	405	25	270	12.5	4.0	φ0.6	5.0
PCR-250X120-06□□□□	25.0	±25	DC 80	1.0	25	300	25	110	8.0	4.5	φ0.6	5.0
PCR-060X080-15□□□□	6.0	±25	AC265	4.1	25	350	25	170	18.0	5.5	φ0.6	5.0
PCR-100X120-14□□□□	10.0	±25	AC265	2.2	25	400	25	200	15.5	7.0	φ0.6	5.0
PCR-250X120-07□□□□	25.0	±25	AC265	1.0	25	200	25	100	9.0	5.0	φ0.6	5.0

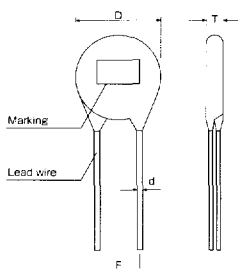
■ Lead Type



For Overcurrent Protection (UL1459 50A Corresponding Product)

Part No.	Initial Characteristics								Dimensions			
	Resistance R ₂₅		Max. Rated Voltage (V)	Max. Current (A)	Operating Current		Non-operating Current		D (mm) Max.	T (mm) Max.	Lead Wire (mm)	
	(Ω)	(%)			Temp. (°C)	Current (mA)	Temp. (°C)	Current (mA)			d	F
PCR-120N090-12□□□□	12.0	±30	AC 250	0.6	-10	330	60	90	15.0	6.0	φ0.6	5.0
PCR-390N120-09□□□□	39.0	±30	AC 250	0.6	25	260	50	100	10.0	6.0	φ0.6	5.0

For Degaussing Circuit (Lead Type)



Part No.	Initial Characteristics						Dimensions			
	Resistance R ₂₅		Rated Voltage (ACV)	Attenuation (mAp-p)			D (mm) Max.	T (mm) Max.	Lead Wire (mm)	
	(Ω)	(%)		Rush (A-p-p)	After. 3 sec. (mAp-p)	After. 60 sec. (mAp-p)			d	F
PAR-050M050-151□□	5.0	±20	100	≥25	≤300	≤60	19.0	7.0	φ0.6	7.5
PAR-080M050-141□□	8.0	±20	120	≥16	≤300	≤60	18.0	7.0	φ0.6	7.5
PAR-180N050-141□□	18.0	±30	220	≥15	≤300	≤40	18.0	6.8	φ0.6	10.0
PAR-200N050-141□□	20.0	±30	220	≥15	≤300	≤40	18.5	6.5	φ0.6	10.0
PAR-250N050-121□□	25.0	±30	220	≥8	≤220	≤50	15.0	7.0	φ0.6	10.0

For Heater

Part No.	Initial Characteristics				Dimensions		
	Resistance R ₂₅ (Ω)	(%)	Rated Voltage (V)	Max. Current (A)	Temp. Rise (°C)	D (mm)	T (mm)
PFE-100M090-100□□	10.0	±20	DC 15	1.5	separate spec.	φ10.0	2.5
PFE-200M100-100□□	20.0	±20	DC 15	1.1	separate spec.	φ10.0	2.5
Ring Heater			AC100	0.5	separate spec.	separate spec.	

※Type No. Characteristics and dimensions in this catalog are for reference only. For details, please inquire at our sales office.