

SMT CURRENT SENSE TRANSFORMERS

PA0368 Series



- Current rating up to 4 Amps
- Operating Frequency Range: 50 kHz to 500 kHz
- Maximum footprint: 8.38 mm x 8.38 mm x 3.30 mm

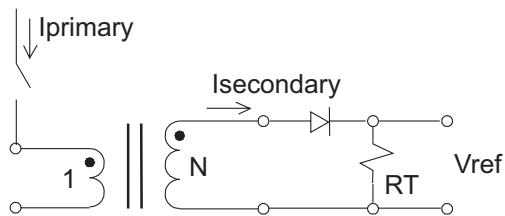
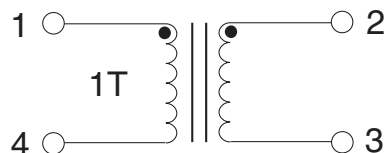
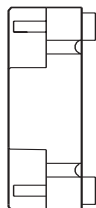
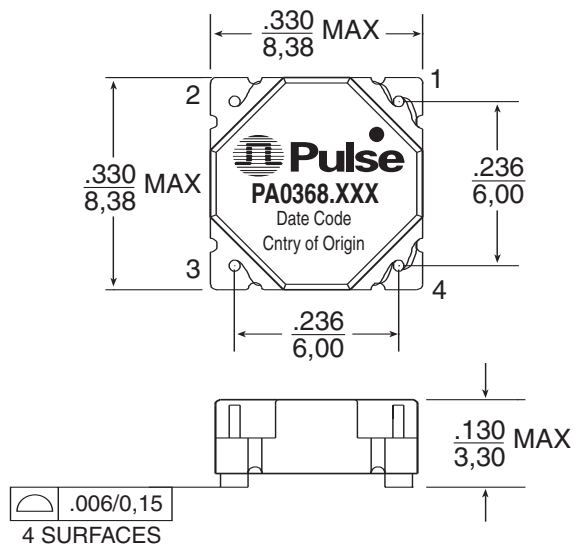
Electrical Specifications @ 25°C — Operating Temperature -40°C to 130°C

Part number	Turns ratio	Current Rating ¹	Secondary Inductance (mH MIN)	DCR (mΩ MAX)		Hipot (Vrms)
				Primary	Secondary	
PA0368.050	1:50	4	1.7	4	900	500
PA0368.070	1:70	4	3.3	4	1200	500
PA0368.080	1:80	4	4.3	4	1400	500
PA0368.100	1:100	4	6.7	4	1600	500
PA0368.125	1:125	4	10.4	4	1900	500

- NOTES:**
1. The maximum current rating is based on temperature rise of the component and represents the dc current which will cause a typical temperature rise of 40°C with no airflow.
 2. To calculate the value of the terminating resistor (Rt) use the following formula: $R_t (\Omega) = V_{ref} * N / (I_{peak\ primary})$
 3. The peak flux density of the device must remain below 2000 Gauss. To calculate the peak flux density for a uni-polar current, use the following formula:
 $B_{pk} = 64.9 * V_{ref} * (Duty\ Cycle\ Max) * 10^5 / (N * Freq\ kHz)$ — (for bi-polar current applications divide Bpk as calculated above by 2).

Mechanical

Schematic



APPLICATION CIRCUIT

Weight0.3 grams
Tape & Reel1100/reel

Dimensions: Inches
mm
Unless otherwise specified, all tolerances are ± $\frac{.010}{0,25}$

For More Information :

UNITED STATES (Worldwide)	UNITED KINGDOM (Northern Europe)	FRANCE (Southern Europe)	SINGAPORE (Southern Asia)	TAIWAN, R.O.C. (Northern Asia)	HONG KONG (China/Hong Kong)	DISTRIBUTOR
12220 World Trade Drive San Diego, CA 92128 U.S.A. http://www.pulseeng.com TEL: 858 674 8100 FAX: 858 674 8262	1 & 2 Huxley Road The Surrey Research Park Guildford, Surrey GU2 5RE United Kingdom TEL: 44 1483 401700 FAX: 44 1483 401701	Zone Industrielle F-39270 Orgelet France TEL: 33 3 84 35 04 04 FAX: 33 3 84 25 46 41	150 Kampong Ampat #07-01/02 KA Centre Singapore 368324 TEL: 65 6287 8998 FAX: 65 6280 0080	3F-4, No. 81, Sec. 1 HsinTai Wu Road Hsi-Chih, Taipei Hsien Taiwan, R.O.C. Tel: 886 2 2698 0228 FAX: 886 2 2698 0948	19/F, China United Plaza 1008 Tai Nan West Street Cheung Sha Wan, Kowloon Hong Kong, China TEL: 852 2788 6588 FAX: 852 2776 1055	

Performance warranty of products offered on this data sheet is limited to the parameters specified. Data is subject to change without notice. Other brand and product names mentioned herein may be trademarks or registered trademarks of their respective owners.