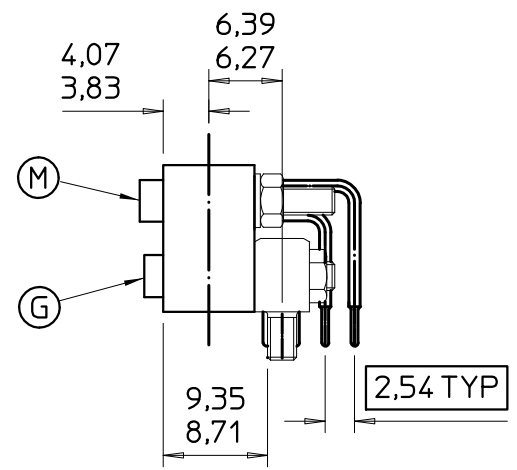
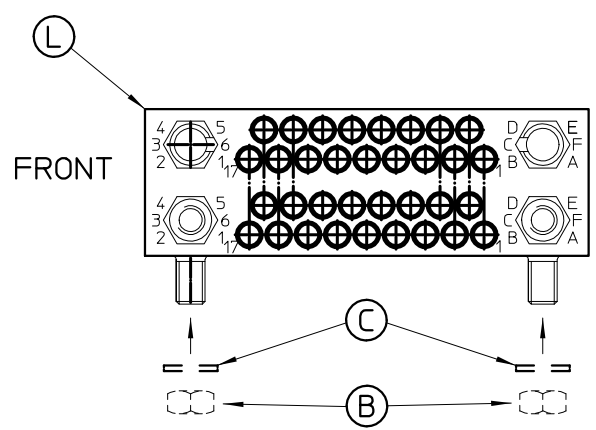
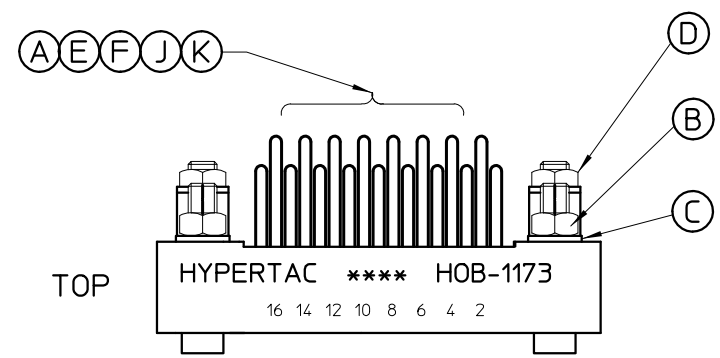
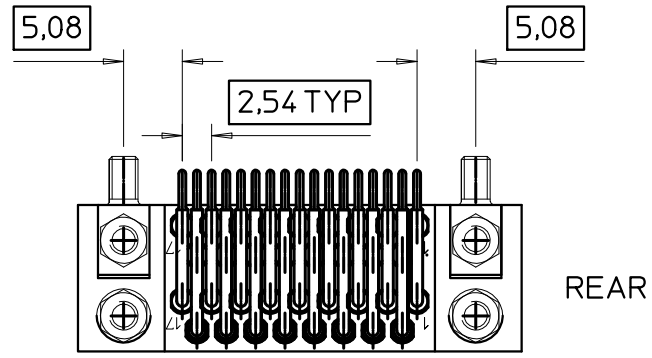


REFERENCE LIST OF PARTS

REF	HYPERTAC PART REF	DESCRIPTION	QTY
A	HPD-127	CLIP	34
B	HPD-166	NUT	4
C	HPD-331	WASHER	4
D	HPD-355	NUT	2
E	HPD-521-9	SOCKET ASSEMBLY	9
F	HPD-523-9	SOCKET ASSEMBLY	8
G	HPD-586	GUIDE	2
H	HPD-678	BLOCK	2
J	HPD-1776-9	SOCKET ASSY	9
K	HPD-1778-9	SOCKET ASSY	8
L	HPD-1773-A	INSULATOR	1
M	HPD-124	GUIDE	2



INFORMATION CONTAINED IN THIS DOCUMENT IS CONFIDENTIAL TO SMITHS INDUSTRIES PLC. AND MAY NOT BE DISCLOSED OR REPRODUCED IN WHOLE OR IN PART WITHOUT THEIR WRITTEN CONSENT. © SMITHS INDUSTRIES plc

TOLERANCES UNLESS STATED OTHERWISE

TO BE ON ALL TURNED PARTS UNLESS STATED OTHERWISE

ANGLES	± 1°	.X	± 0,10 mm
		.XX	± 0,05 mm
FRACTIONS	±	.XXX	± mm

3rd ANGLE PROJECTION

DRG GENERALLY CONFORMS TO BS308 ALL BS STANDARDS TO LATEST ISSUE

GENERAL NOTES
 REMOVE ALL BURRS AND SHARP EDGES.
 BLEND ALL RADII.

DIMENSIONS IN mm

SCALE 2 : 1 OR AS STATED

DR AH CH MG APP AH

HYPERTAC LIMITED

3	SEE C/N	30.11.06	4699
2	SEE C/N	03.03.06	4610
1	PROD	02.02.06	
ISSUE	MODIFICATION	DATE	C/N No
MATERIAL			
SEE SPEC			
MATERIAL CODE	WT /1000	LGTH / 1000	
FINISH			
SEE SPEC			
FIRST USED ON			
SIMILAR TO			
HPD-1028			
TITLE			
SPECIAL HPD 34 WAY FEMALE (POLARISED)			
DRAWING No			
HOB-1173 SHEET 1 OF 1			
FORMERLY			
XX-XXXX			
			A3