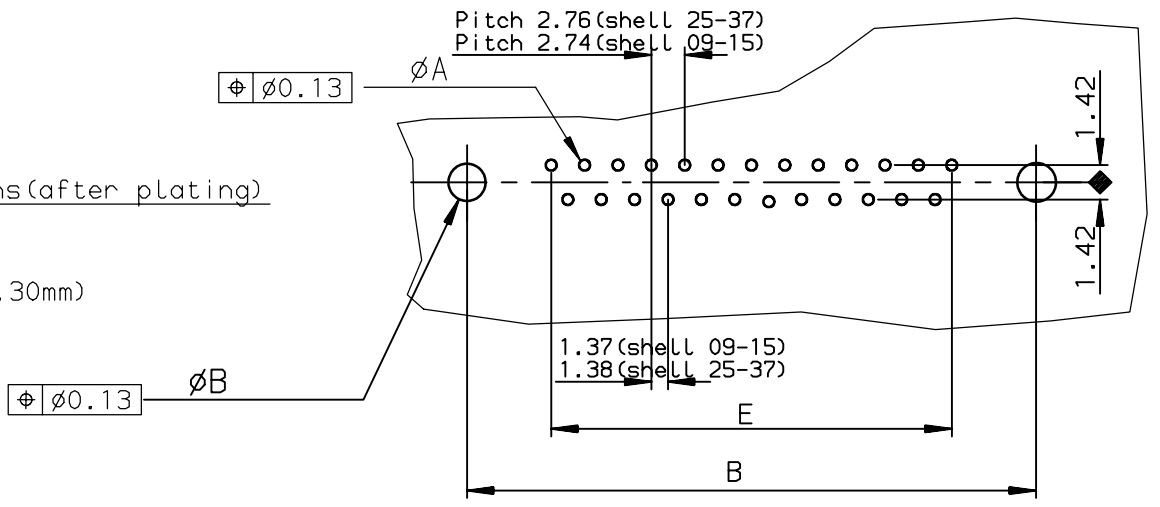


PC board drilling dimensions(after plating)

(thickness ≤ 3.20±0.30mm)



TIN LEAD PART NUMBER

SHELL	A±0.38	B±0.12	C±0.10	D±0.25	E±0.07	PART NUMBER	PART NUMBER
09	30.81	24.99	16.96	16.79	10.96	D09P91C4PI00	D09P91C6PI00
15	39.14	33.32	25.18	25.12	19.18	D15P91C4PI00	D15P91C6PI00
25	53.03	47.04	39.12	38.84	33.12	D25P91C4PI00	D25P91C6PI00
37	69.32	63.50	55.68	55.30	49.68	D37P91C4PI00	D37P91C6PI00
						gold flash	0.76µ gold

LEAD FREE PART NUMBER

SHELL	A±0.38	B±0.12	C±0.10	D±0.25	E±0.07	PART NUMBER	PART NUMBER
09	30.81	24.99	16.96	16.79	10.96	D09P91C4PI00LF	D09P91C6PI00LF
15	39.14	33.32	25.18	25.12	19.18	D15P91C4PI00LF	D15P91C6PI00LF
25	53.03	47.04	39.12	38.84	33.12	D25P91C4PI00LF	D25P91C6PI00LF
37	69.32	63.50	55.68	55.30	49.68	D37P91C4PI00LF	D37P91C6PI00LF
						gold flash	0.76µ gold

GENERAL CHARACTERISTICS AND ROHS INFORMATIONS:
SEE DRAWING C01-8646-0001

European Views

www.fciconnect.com		surface ISO 1302	tolerance std ISO 406 ISO 1101	projection mm
TOLERANCES UNLESS OTHERWISE SPECIFIED				size A3
Dr	JOUBERT	1997/12/09	ANGULAR	Scale 2
Eng	PESSON	1997/12/09	LINEAR	ECN LS06-0140
Chr	LEGARE	1997/12/09	0.xx' ±2'	Spec ref -
Appr	LEGARE	1997/12/09	Product family	D-SUB
title MALE CONNECTOR DELTA D EUROPE		dwg no C01-8646-0607		Rev. E
catalog no		CUSTOMER sheet 1 of 1		

rev	ecn no	dr	date
B	-	ATC	2001/02/27
C	LS05-004	MPE	2005/02/11
D	LS06-0095	LGO	2006/07/22
E	LS06-0140	LGO	2006/09/16
-	-	-	-
-	-	-	-
-	-	-	-

Copyright FCI. FCI