

RF PASSIVE COMPONENTS

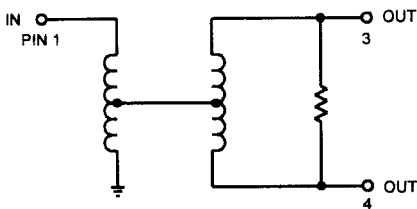
DESCRIPTION

The CPD-201-50 is a wideband RF, subminiature surface mount 2-way power divider/combiner suitable for pick and place assembly.

This device offers low insertion loss and excellent phase and amplitude balance over a very broad bandwidth and the low VSWR at all ports minimize circuit interface problems.

The CPD-201-50 base, cover, and internal construction consists of high temperature materials to withstand even the most rigorous reflow profiles.

FUNCTIONAL SCHEMATIC



SPECIFICATIONS				
PARAMETER	MIN.	TYP.	MAX.	UNITS
Impedance		50		Ohms
Frequency Range	5		1000	MHz
Temperature Range	-40		+85	°C
Insertion loss		0.7	1.5	dB
Amplitude Balance		±0.1	±0.2	dB
Phase Balance		±1	±3	Deg
Isolation	17	20		dB
VSWR (Input)	14	17.7		dB
VSWR (Output)	15.6	23		dB

PACKAGE

COVER MATERIAL:

Plastic

BASE MATERIAL:

FR-4

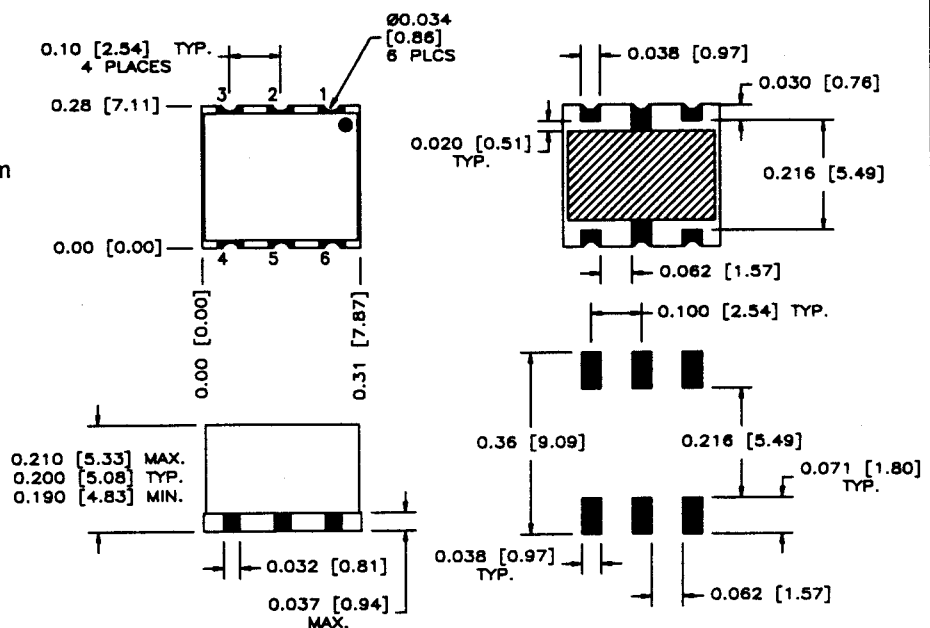
Note: All half via contacts are plated through from the pad on the top side to the pad on the bottom side of the board.

PLATING:

63/37 Tin/Lead Solder

Pinout Chart	
Pin	Function
1	Input
2	Ground
3	Output
4	Output
5	Ground
6	Ground

ALL DIMENSIONS ARE IN INCHES [mm].



TOLERANCES:
.XX ± 0.01
.XXX ± 0.005

Recommended Land
Pattern

Contact the factory for further information on tape and reel specifications and recommended reflow profiles.

11.2.00 Rev. A