

REFERENCE SPECIFICATIONS

-NFC 93425 (in compliance with HE 507)

PHYSICAL CHARACTERISTICS

-INSULATOR MATERIAL: THERMOPLASTIC UL94V0

-CONTACT MATERIAL: BRASS

-ACCESSORIES: STAINLESS STEEL or BRASS

-SHELLS: STEEL

ELECTRICAL CHARACTERISTICS

-NOMINAL CURRENT: 7.5A (SIGNAL CONTACT)

-CONTACT RESISTANCE: <=7.3 m Ohms SIGNAL

-CONTACT/CONTACT : >=1000 V

-CONTACT/GROUND : >=1200 V

-INSULATION RESISTANCE: >=5000 MOhms

- CLIMATIC CATEGORY: 55/125/21

TEMPERATURE RANGE -55°C TO +125°C

DAMP HEAT STEADY STATE 56 DAYS

SALT SPRAY 48 HOURS

# DBML13W3P300NLF

Series

Shell size: **E A B C D**  
see sheet 3

**M** :characteristic  
for the DM series

Front accessory definition  
see sheet 2

**Blank** :without accessory

**L** :threaded insert M3

**O** :threaded insert UNC 4-40

**V** :female screw UNC 4-40

**F** :floating mounting

**S** :spacer

Layout of contacts (see sheet 3)

Contacts

**P** :Pin

Termination type

**3** Straight version

Plating

**00** straight solder 500 matings/unmatings

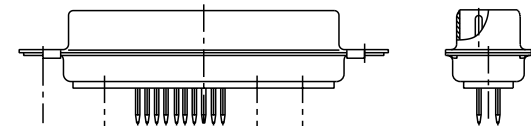
**43** straight solder 500 matings/unmatings for harsh environment

**N** :obligatory indication for HE 507 series

See note RoHS

NOTE RoHS INFORMATION

- The "LF" products meet european union Directives and other country regulations as described in GS-22-008.
- The housing will withstand exposure to 260°C peak temperature for 3.5 seconds in a wave solder application with a 1.6mm minimum thick circuit board. See application notes/procedures if they are available.
- Termination plating spec:
  - Signal contacts: Gold over Nickel
- Active area plating spec:
  - Signal contacts: Gold over Nickel
- Shell plating : Bright pure tin (white or transparent color)
- Accessories: Bright pure tin (white or transparent color)
- Packaging spec: See GS-14-920

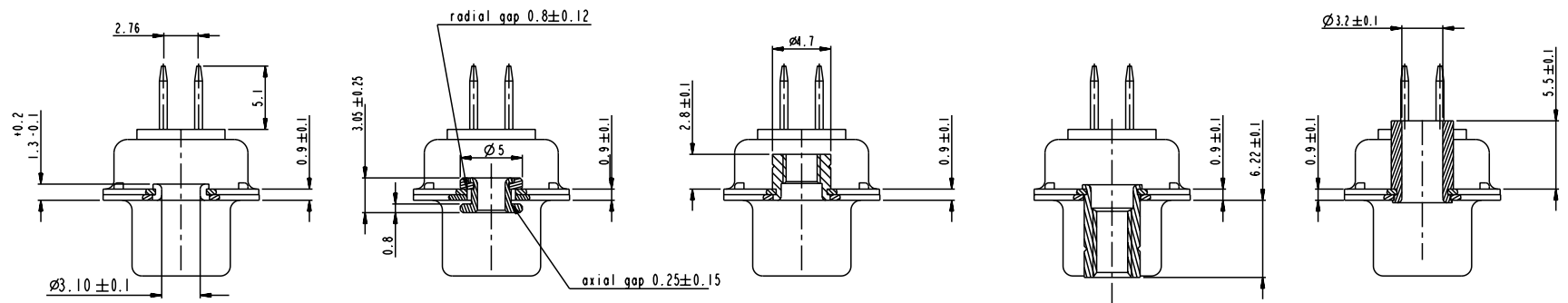


I3W3 FOR EXAMPLE

www.fciconnect.com				surface	tolerance std	projection	mm	
				ISO 1302	ISO 406	ISO 1101		
				TOLERANCES UNLESS OTHERWISE SPECIFIED				
Dr	M PESSON	11/10/05	ANGULAR	0.X	±0.3	size	A2	Scale
Eng	11/10/05	P LEGARE	LINEAR	0.XX	±0.1	ECN	LS07-0273	2:1
Chr			0° ±2°	0.XXX	±0.05	Product family		Spec ref
Appr								
FCI				SUB MALE DMW		deg no	C01-8637-1683	
				mixed power straight solder		Rev.	C	
				catalog no	CUSTOMER		sheet 1 of 7	



Copyright FCI.



FRONT ACCESSORY    **Blank** without    **F** floating mounting    **L** insert M3    **O** insert UNC 4.40    **V** femelle screw UNC 4.40    **S** Spacer

shell size LAYOUTS

PART NUMBER	FRONT ACCESSORY
D*MxWxP300NLF	without
D*MFxWxP300NLF	floating mounting
D*MLxWxP300NLF	insert M3
D*MOxWxP300NLF	insert UNC 4.40
D*MVxWxP300NLF	female screw UNC 4.40
D*MSxWxP300NLF	Spacer
D*MxWxP343NLF	without
D*MFxWxP343NLF	floating mounting
D*MLxWxP343NLF	insert M3
D*MOxWxP343NLF	insert UNC 4.40
D*MVxWxP343NLF	female screw UNC 4.40
D*MSxWxP343NLF	Spacer

- \* xWx
- E 5W1
- A 11W1
- A 7W2
- B 21W1
- B 17W2
- B 13W3
- B 9W4
- C 25W3
- C 21WA4
- C 27W2
- D 47W1
- D 24W7
- D 36W4

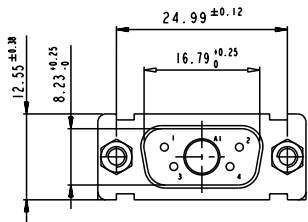
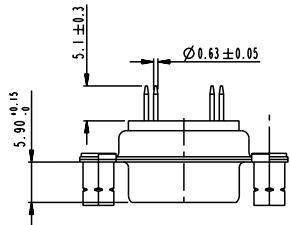
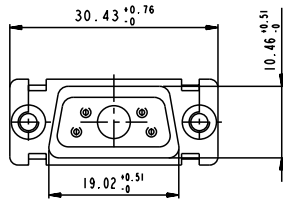
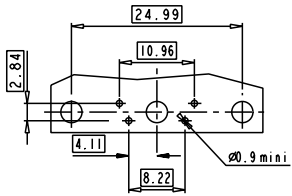
Copyright FCJ.

www.fciconnect.com		surface ISO 1302	tolerance std ISO 406 ISO 1101	projection mm
		TOLERANCES UNLESS OTHERWISE SPECIFIED		
Dr M PESSON	11/10/05	ANGULAR	0.X ±0.3	size A2
Eng 11/10/05	P LEGARE	LINEAR	0.XX ±0.1	Scale 2:1
Chr		0° ±2°	0.XXX ±0.05	ECN LS07-0273
Appr		Product family		Spec ref
FCJ		SUB MALE DMW		Rev. C
		mixed power straight solder		001-8637-1683
		catalog no		CUSTOMER sheet 2 of 7

SCALE: 4

5W1

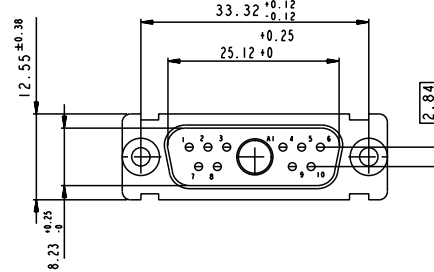
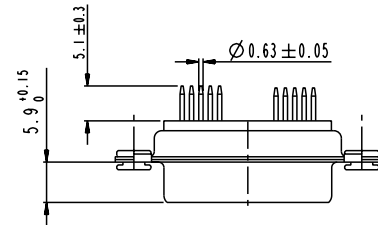
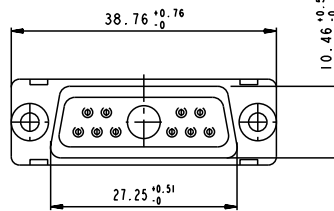
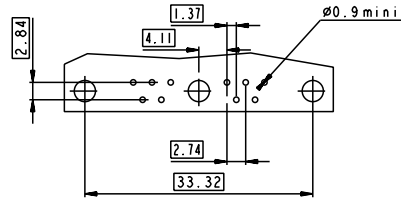
LAYOUT AND CONNECTOR DIMENSIONS



Floating signal contacts

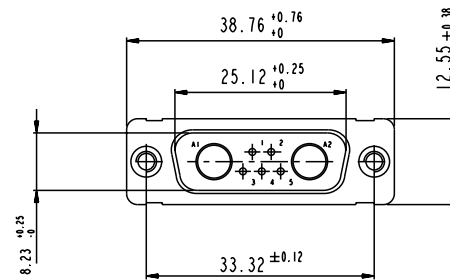
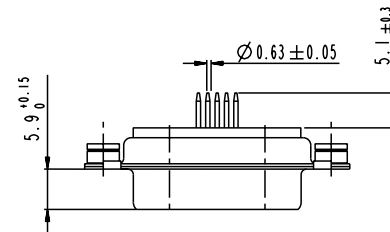
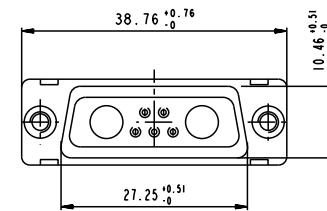
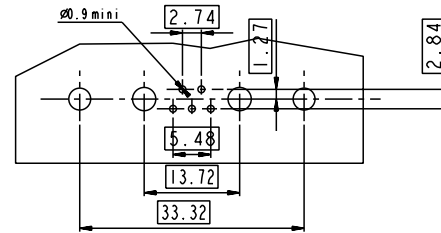
11W1

LAYOUT AND CONNECTOR DIMENSIONS

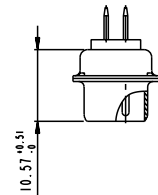


7W2

LAYOUT AND CONNECTOR DIMENSIONS



SIDE VIEW FOR LAYOUTS: E A B C

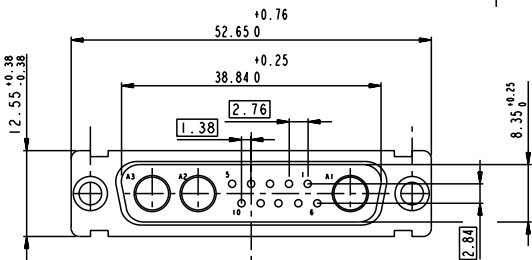
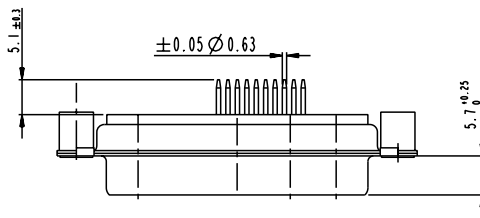
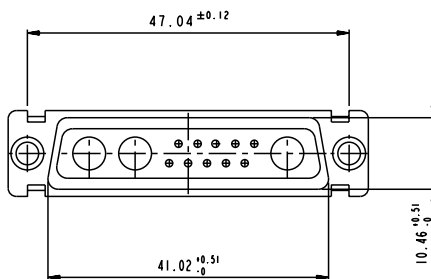
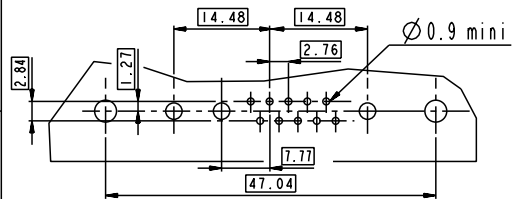


Copyright FCI.

www.fciconnect.com		surface ISO 1302	tolerance std ISO 406 ISO 1101	projection ISO 1101	mm
TOLERANCES UNLESS OTHERWISE SPECIFIED					
Dr M PESSON	11/10/05	ANGULAR	0.X ±0.3	size A2	Scale 2:1
Eng 11/10/05	P LEGARE	LINEAR	0.XX ±0.1	ECN	LS07-0273
Chr		0° ±2°	0.XXX ±0.05	Product family	Spec ref
Appr				Product family	Spec ref
FCI		SUB MALE DMW		ang no	C01-8637-1683
mixed power straight solder				Rev.	C
catalog no		CUSTOMER		sheet 3 of 7	

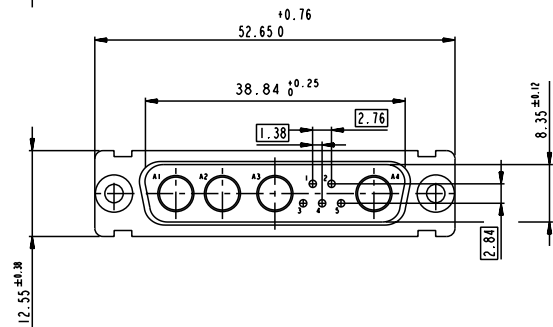
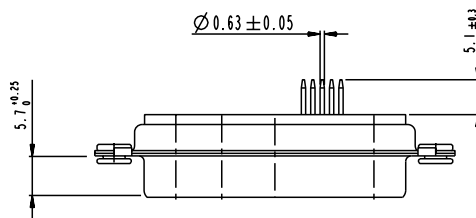
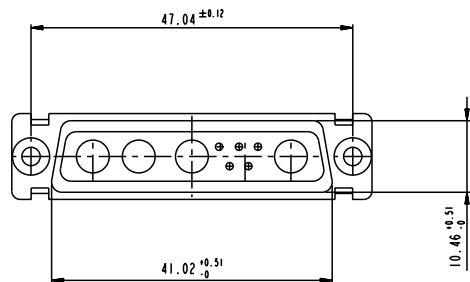
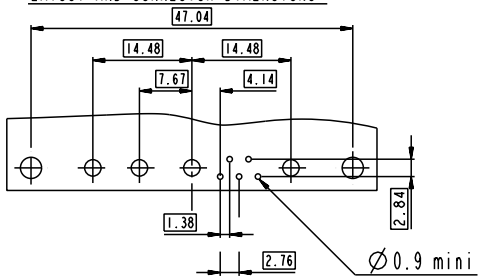
13W3

LAYOUT AND CONNECTOR DIMENSIONS



9W4

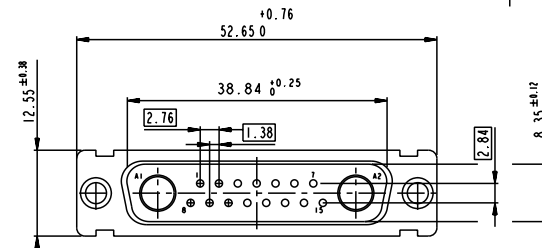
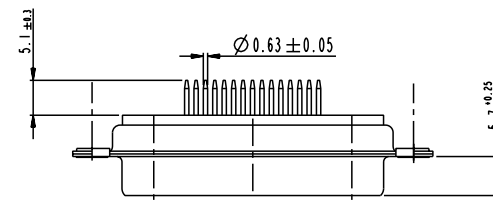
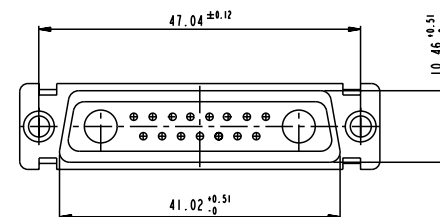
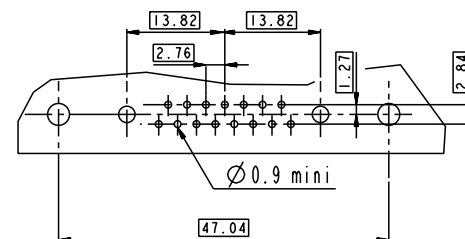
LAYOUT AND CONNECTOR DIMENSIONS



Floating signal contacts

17W2

LAYOUT AND CONNECTOR DIMENSIONS



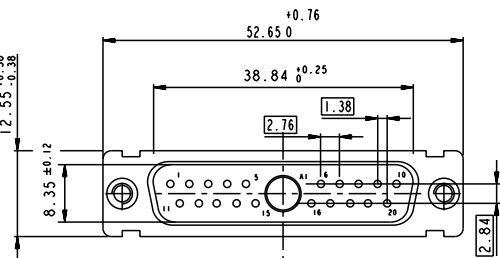
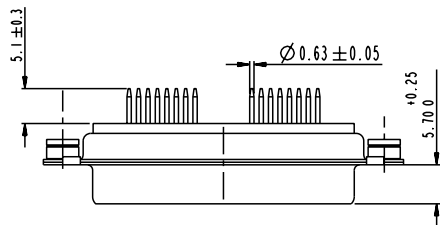
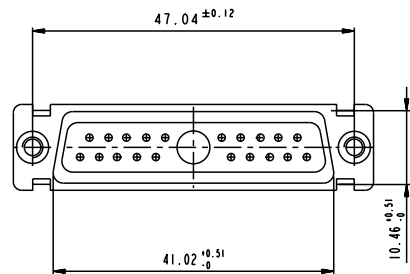
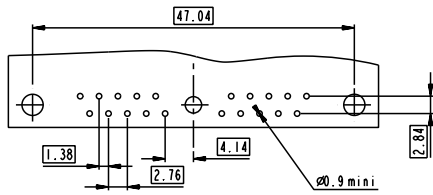
www.fciconnect.com		surface ISO 1302	tolerance std ISO 406 ISO 1101	projection mm
		TOLERANCES UNLESS OTHERWISE SPECIFIED		
Dr M PESSON	11/10/05	ANGULAR	0.X ±0.3	size A2
Eng 11/10/05	P LEGARE	LINEAR	0.XX ±0.1	Scale 2:1
Chr		0° ±2°	0.XXX ±0.05	ECN LS07-0273
Appr		Product family	-	Spec ref
		SUB MALE DMW		Rev. C
		mixed power straight solder		cat no C01-8637-1683
		CUSTOMER		sheet 4 of 7



Copyright FCI.

# 21W1

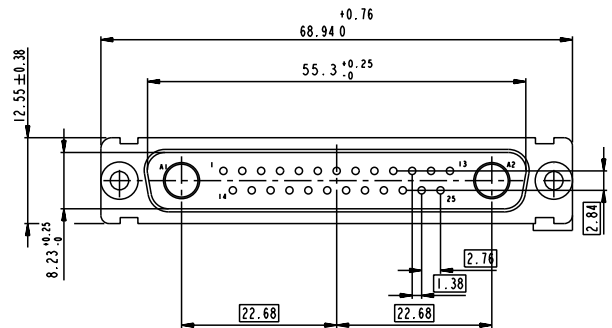
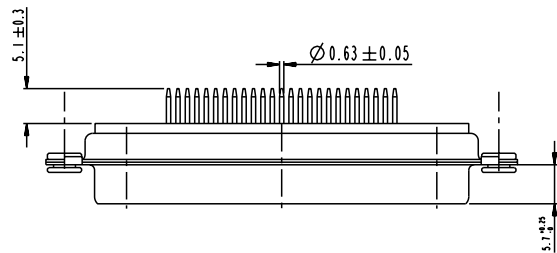
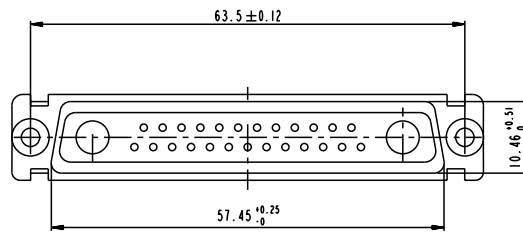
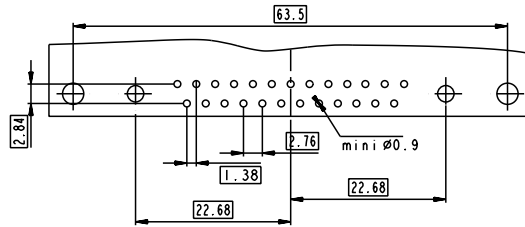
## LAYOUT AND CONNECTOR DIMENSIONS



Floating signal contacts

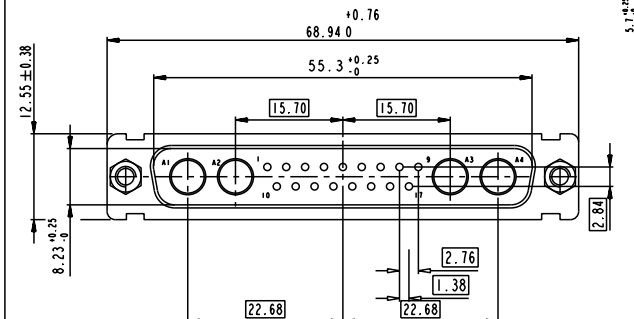
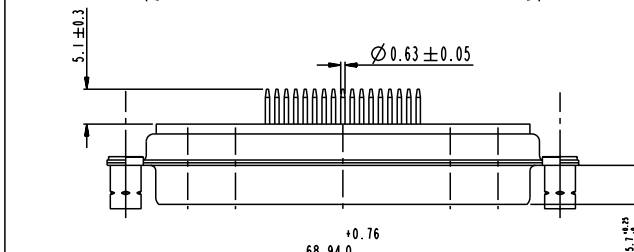
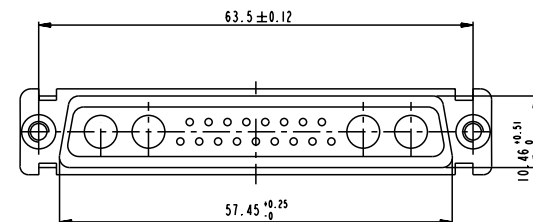
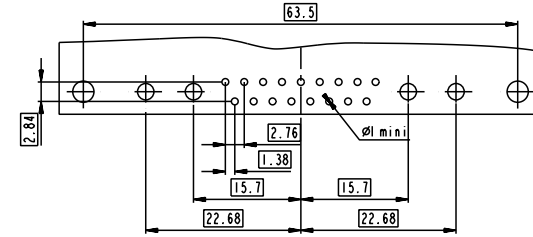
# 27W2

## LAYOUT AND CONNECTOR DIMENSIONS



# 21WA4

## LAYOUT AND CONNECTOR DIMENSIONS

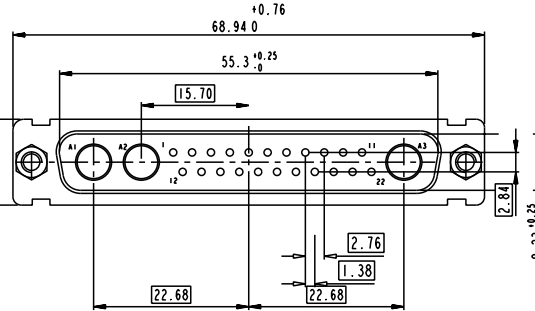
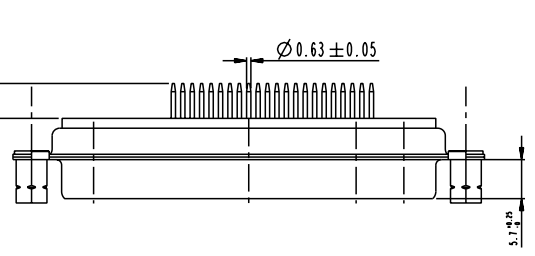
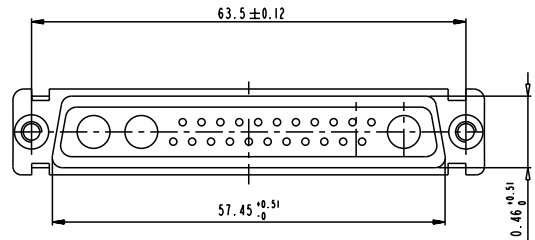
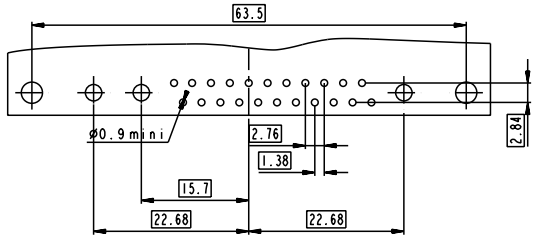


www.fciconnect.com		surface - ISO 1302	tolerance std ISO 406 ISO 1101	projection mm
		TOLERANCES UNLESS OTHERWISE SPECIFIED		
Dr M PESSON	11/10/05	ANGULAR	0.X ±0.3	size A2 Scale 2:1
Eng 11/10/05	P LEGARE	LINEAR	0.XX ±0.1	ECN LS07-0273
Chr		Ø ±2°	0.XXX ±0.05	Spec ref
Appr		Product family		
SUB MALE DMW mixed power straight solder catalog no		part no C01-8637-1683	Rev. C	sheet 5 of 7

Copyright FCI  
FCI

25W3

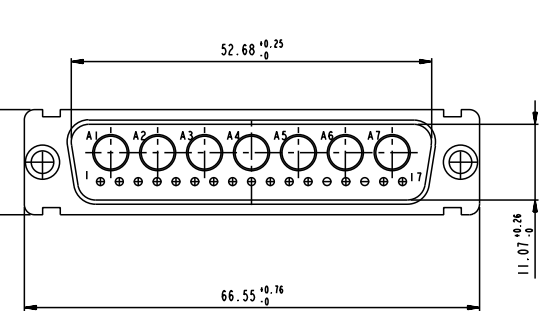
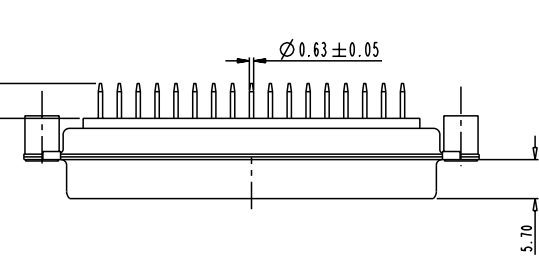
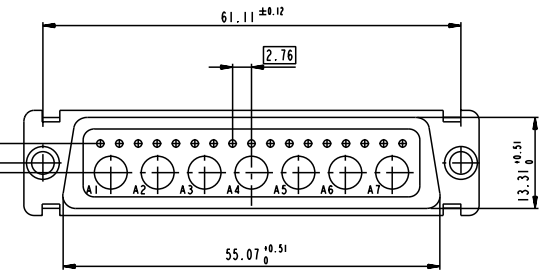
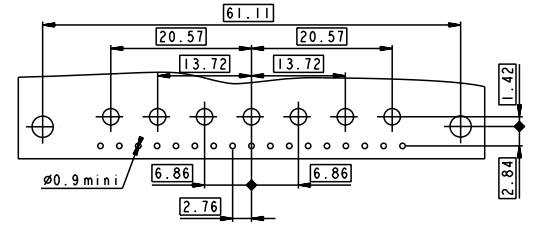
LAYOUT AND CONNECTOR DIMENSIONS



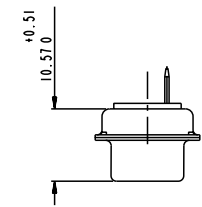
Floating signal contacts

24W7

LAYOUT AND CONNECTOR DIMENSIONS



SIDE VIEW FOR LAYOUT: D

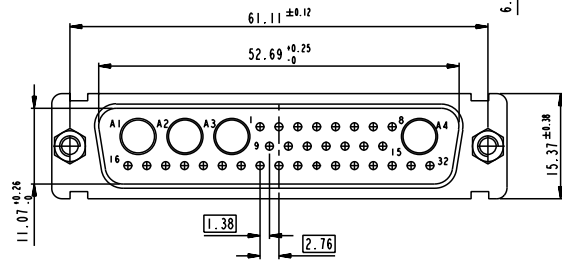
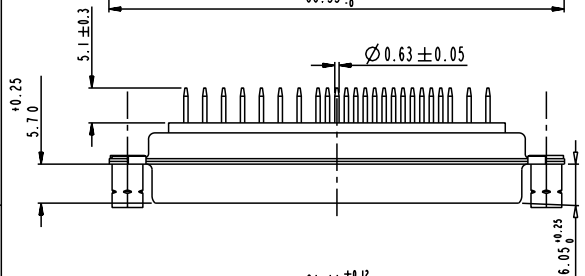
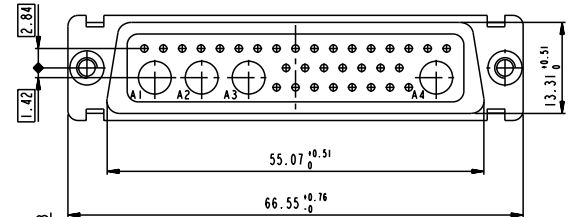
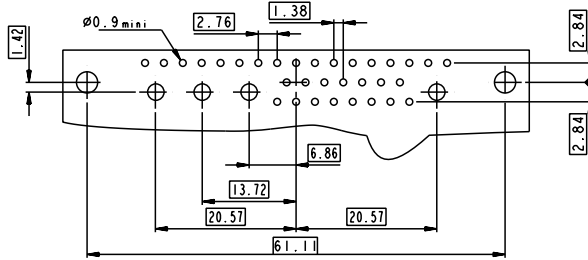


Copyright FCI

www.fciconnect.com		surface ISO 1302	tolerance std ISO 406 ISO 1101	projection mm
		TOLERANCES UNLESS OTHERWISE SPECIFIED		
Dr M PESSON	11/10/05	ANGULAR	0.X ± 0.3	size A2
Eng 11/10/05	P LEGARE	LINEAR	0.XX ± 0.1	Scale 2:1
Chr		0° ± 2°	0.XXX ± 0.05	ECN LS07-0273
Appr		Product family		Spec ref
FCI		SUB MALE DMW		Rev. C
mixed power straight solder		cat no	C01-8637-1683	sheet 6 of 7
CUSTOMER				

36W4

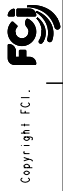
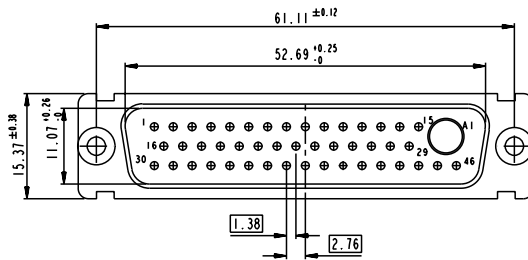
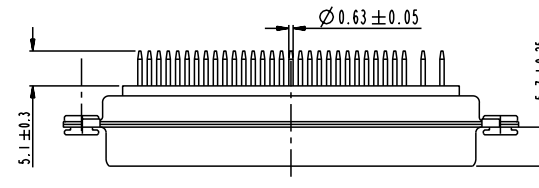
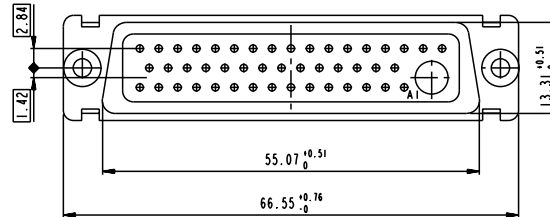
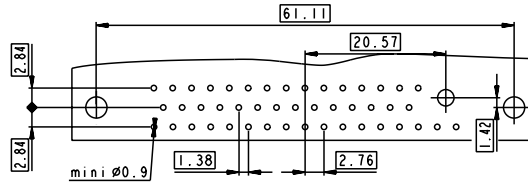
LAYOUT AND CONNECTOR DIMENSIONS



Floating signal contacts

47W1

LAYOUT AND CONNECTOR DIMENSIONS



Copyright FCI

www.fciconnect.com		surface ISO 1302	tolerance std ISO 406 ISO 1101	projection mm
		TOLERANCES UNLESS OTHERWISE SPECIFIED		
Dr M PESSON	11/10/05	ANGULAR	0.X ±0.3	size A2 Scale 2:1
Eng 11/10/05	P LEGARE	LINEAR	0.XX ±0.1	ECN LS07-0273
Chr		0° ±2°	0.XXX ±0.05	Product family - Spec ref
Appr		Product family		
FCI		SUB MALE DMW		Rev. C
mixed power straight solder		cat no	C01-8637-1683	sheet 7 of 7
CUSTOMER				