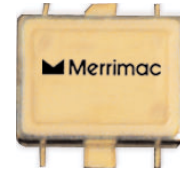


- SPACE QUALIFIED
- 10 - 500 MHz
- 2 WAY SURFACE MOUNT
- HI-REL WELDED CONSTRUCTION TO PASS IR REFLOW



**TECHNICAL DESCRIPTION / APPLICATION**

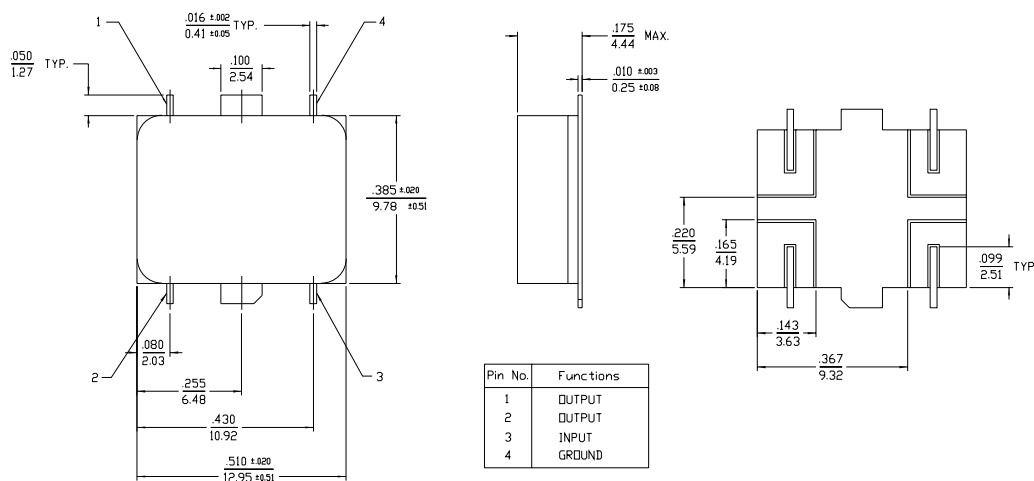
SERIES 03

The PDG-02B-255 SQ surface mount 2 way power dividers/combiners, covers a frequency range of 10 to 500 MHz using a special lumped element design to reduce the size while maintaining high performance. Unit consists of a welded construction. The surface mount housing has been designed for airborne and space applications where inherent package reliability and hermeticity are critical. Parts, materials and processes in accordance with Merrimac document CENG-0001, "Standard Design Requirements for Space Qualified Devices".

**GENERAL SPECIFICATIONS**

MODEL NUMBER	FREQUENCY RANGE MHz	ISOLATION dB		INSERTION LOSS dB		AMPLITUDE BALANCE dB		PHASE BALANCE		VSWR INPUT/OUTPUT	
		MIN.	TYP.	MAX.	TYP.	MAX.	TYP.	MAX.	TYP.	MAX.	TYP.
PDG-02B-255 SQ	10 - 500	25	30	0.7	0.5	0.2	0.1	2°	1°	1.3:1	1.2:1
INPUT POWER MAX.	COUPLING NOM.	IMPEDANCE NOM.	INTERNAL POWER DISSIPATION MAX.		WEIGHT MAX.	OPERATING TEMPERATURE					
1 W	3.0 dB	50 OHM	50 mW		2.8 g	-55° to +85 ° C					

**PACKAGE OUTLINE**



NOTES:  
 1. TOLERANCE ON 3 PLACE DECIMALS ±.010 (.25mm) EXCEPT AS NOTED.  
 2. DIMENSIONS ARE UN INCHES OVER MILLIMETERS.  
 3. ALL UNMARKED TABS ARE GROUND.