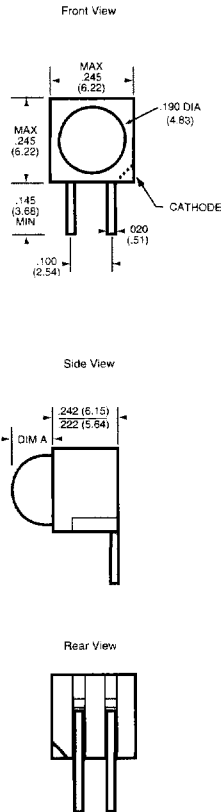
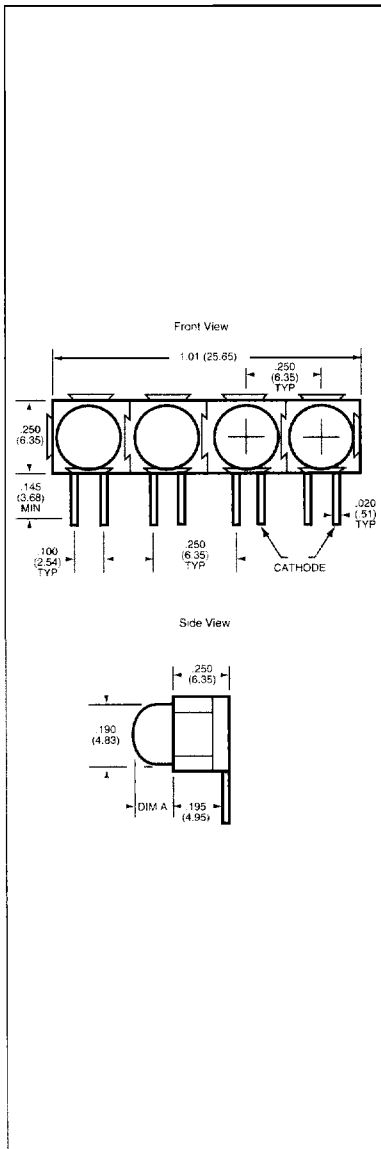


PCB AND PANEL MOUNT LED INDICATORS

T-1 3/4 (5 mm)									
Part Number	Source Color	Wave-length λ_p (nm)	Lens Color	Typical Viewing Angle	I _F (mA) for MR Parts		Luminous Intensity I _V (mcd)		Notes
					V _F (V) typ	max	min	typ	
MV60538.MP6		660	Red Diffused	55°	1.7	2.0	0.8	2.0	4, 11
MV63538.MP6	Yellow	585	Yellow Diffused	65°	2.1	3.0	2.5	18	4, 11
MV64538.MP6		565	Green Diffused	65°	2.2	3.0	1.6	25	4, 11
MV67538.MP6		635	Red Diffused	65°	2.1	3.0	3.0	14	4, 11
MV60539.MP6		660	Red Diffused	65°	1.7	2.0	0.8	2.0	4, 12
MV63539.MP6	Yellow	585	Yellow Diffused	65°	2.1	3.0	2.5	18	4, 12
MV64539.MP6		565	Green Diffused	65°	2.2	3.0	1.8	25	4, 12
MV67539.MP6		635	Red Diffused	65°	2.1	3.0	3.0	14	4, 12
HLMP-47009.MP6		635	Red Diffused	45°	1.8	2.2	1.2	2.0	2, 12
HLMP-47199.MP6	Yellow	585	Yellow Diffused	45°	1.9	2.7	1.2	10	2, 12
HLMP-47409.MP6		565	Green Diffused	45°	1.9	2.3	1.2	3.0	2, 12
HLMP-D1019.MP6		660	Red Diffused	65°	1.8	2.2	35	70.0	4, 12
HLMP-D1509.MP6			Red Clear	24°	1.6	1.8	1.8	3.0	1, 12
MV33509.MP6	Yellow	585	Yellow Clear	24°	2.2	3.0	80	150	4, 12
MV34509.MP6		565	Green Clear	24°	2.2	3.0	80	150	4, 12
MV37509.MP6		635	Orange Clear	24°	2.2	3.0	80	150	4, 12
MR30509.MP6		660	Red Diffused	60°	12	20	1.0	2.0	8,12,15
MR30519.MP6				60°	13	20	1.0	2.0	9,12,15
MR33509.MP6	Yellow	585	Yellow Diffused	60°	10	15	1.5	4.0	8,12,15
MR33519.MP6				60°	13	20	1.5	4.0	9,12,15
MR34509.MP6		565	Green Diffused	60°	12	15	1.5	4.0	8,12,15
MR34519.MP6				60°	13	20	1.5	4.0	9,12,15
MR37509.MP6		635	Red Diffused	60°	10	15	1.5	4.0	8,12,15
MR37519.MP6				60°	13	20	1.5	4.0	9,12,15
MV54919.MP6		660 / 565	White Diffused	100°	2.1	3.0	2.0	6.0	6,12,13,14





T-1 3/4 (5 mm) Multiple										
Part Number	Source Color	Wave-length λ_p (nm)	Lens Color	Typical Viewing Angle	I_F (mA) for MR Parts		Luminous Intensity I_V (mcd)		Notes	
					V_F (V) typ	max	min	typ		
MV60538.MP8A		660	Red Diffused	65°	1.7	2.0	0.8	2.0	4, 17	
MV63538.MP8A	Yellow	585	Yellow Diffused	65°	2.1	3.0	3.5	18	4, 17	
MV64538.MP8A		565	Green Diffused	65°	2.2	3.0	16	25	4, 17	
MV67538.MP8A		635	Red Diffused	65°	2.1	3.0	3.0	14	4, 17	
MV60539.MP8A		660	Red Diffused	65°	1.7	2.0	0.8	2.0	4, 18	
MV63539.MP8A	Yellow	585	Yellow Diffused	65°	2.1	3.0	2.5	18	4, 18	
MV64539.MP8A		565	Green Diffused	65°	2.2	3.0	16	25	4, 18	
MV67539.MP8A		635	Red Diffused	65°	2.1	3.0	3	14	4, 18	
HLMP-47009.MP8A		635	Red Diffused	45°	1.8	2.2	1.2	2.0	2, 18	
HLMP-47199.MP8A	Yellow	585	Yellow Diffused	45°	1.9	2.7	1.2	10	2, 18	
HLMP-47409.MP8A		565	Green Diffused	45°	1.9	2.3	1.2	2.0	2, 18	
MV33509.MP8A	Yellow	585	Yellow Clear	24°	2.2	3.0	80	150	4, 18	
MV34509.MP8A		565	Green Clear	24°	2.2	3.0	80	150	4, 18	
MV37509.MP8A		635	Orange Clear	24°	2.2	3.0	80	150	4, 18	
MR30509.MP8A		660	Red Diffused	60°	12	20	1.0	2.0	8,15,18	
MR30519.MP8A				60°	13	20	1.0	2.0	9,15,18	
MR33509.MP8A	Yellow	585	Yellow Diffused	60°	10	15	1.5	4.0	8,15,18	
MR33519.MP8A				60°	13	20	1.5	4.0	9,15,18	
MR34509.MP8A		565	Green Diffused	60°	12	15	1.5	4.0	8,15,18	
MR34519.MP8A				60°	13	20	1.5	4.0	9,15,18	
MR37509.MP8A		635	Red Diffused	60°	12	15	1.5	4.0	8,15,18	
MR37519.MP8A				60°	13	20	1.5	4.0	9,15,18	
MV54919.MP8A		660 / 565	White Diffused	100°	2.1	3.0	2.0	6.0	4,13,14,18	

Notes

- 2. V_F & I_V @ $I_F = 2$ mA
- 4. V_F & I_V @ $I_F = 20$ mA
- 8. I_F & I_V @ $V_F = 5$ V
- 9. I_F & I_V @ $V_F = 12$ V
- 11. Dim A = 0.125 (3.18)
- 15. Integral Resistor
- 16. Dim A = 0.183 (4.65)
- 17. Dim A = 0.140 (3.56)
- 18. Dim A = 0.195 (4.95)
HER = High Efficiency Red