

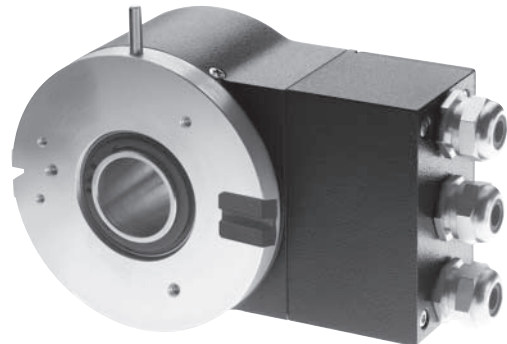
Absolute single-turn hollow shaft encoder

BPSD flexible

Profibus-DP, CANopen, DeviceNet

features

- multi-turn encoder up to 13 bit resolution
- modular bus cover
- programmable operating modes
- programmable bus parameters
- programmable resolution and preset values
- hollow shaft \varnothing 25,4...50,8 mm



general data

voltage supply	10 - 30 VDC with reverse polarity protection
max. current supply no load	100 mA (at 24 VDC)
signal code	binary code
max. resolution	13 bit (1 step = 2' 38")
max. switching frequency	800 kHz
max. error limit	$\pm 0,025^\circ$ at 400 kHz $\pm 0,05^\circ$ at 800 kHz
preset	in state data-exchange encoder can be set to a predefined position
address	selectable via jog-dial
baud rate	selectable via dip switches
direction of rotation	looking at the flange, position counts up as the shaft rotates clockwise (CW), programmable

ambient conditions

temperature range	-20...+85 °C
relative humidity	max. 95% non condensing
vibration	DIN EN 60068-2-6 (≤ 100 m/s ² / 16-2'000 Hz)
shock	DIN EN 60068-2-27 ($\leq 2'000$ m/s ² / 6 ms)
noise immunity	DIN EN 61000-6-2
emitted interference	DIN EN 61000-6-4

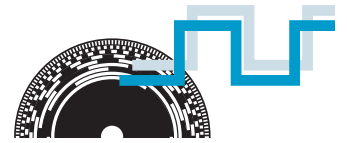
mechanical data

BPSD 25

max. revolutions	mech. 3'800 rpm electr. 6'000 rpm
moment of inertia	200×10^{-6} kgm ²
max. protection class	IP 54
material	housing: aluminum
weight	approx. 830 g

BPSD 50

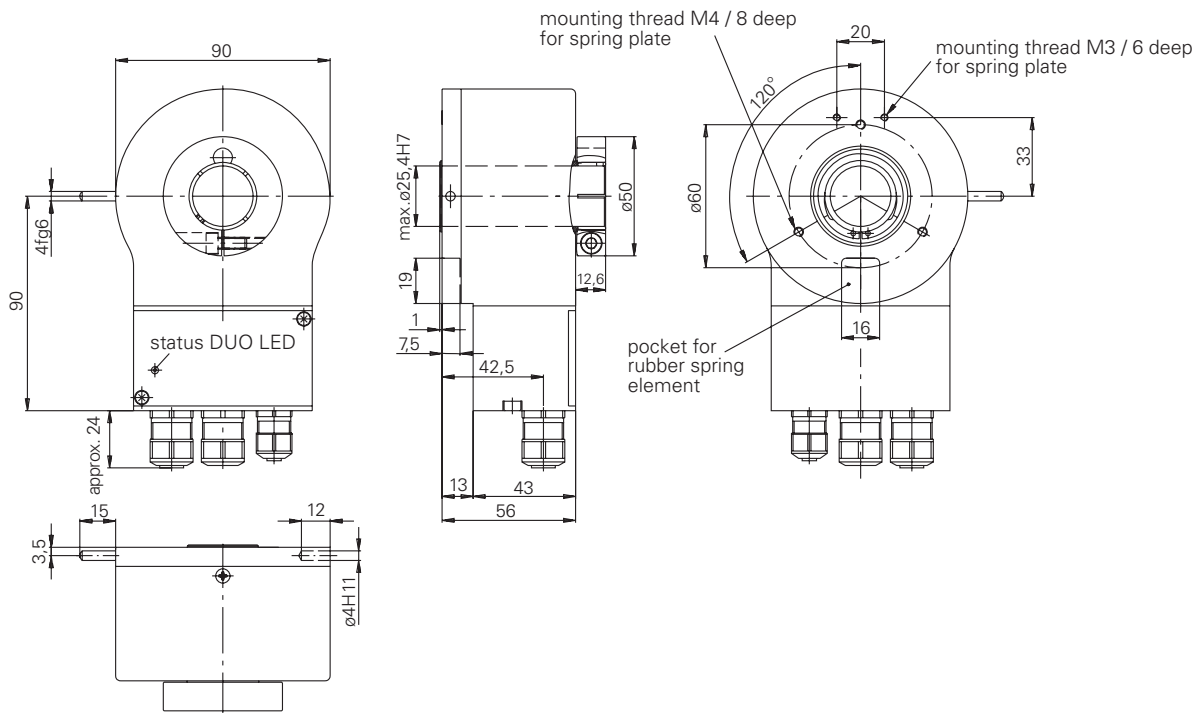
max. revolutions	mech. 2'000 rpm higher on request electr. 6'000 rpm
moment of inertia	$1'100 \times 10^{-6}$ kgm ²
max. protection class	IP 54
material	housing: aluminum
weight	approx. 1'200 g



Profibus-DP, CANopen, DeviceNet

dimensions

BPSD 25 with Profibus-DP

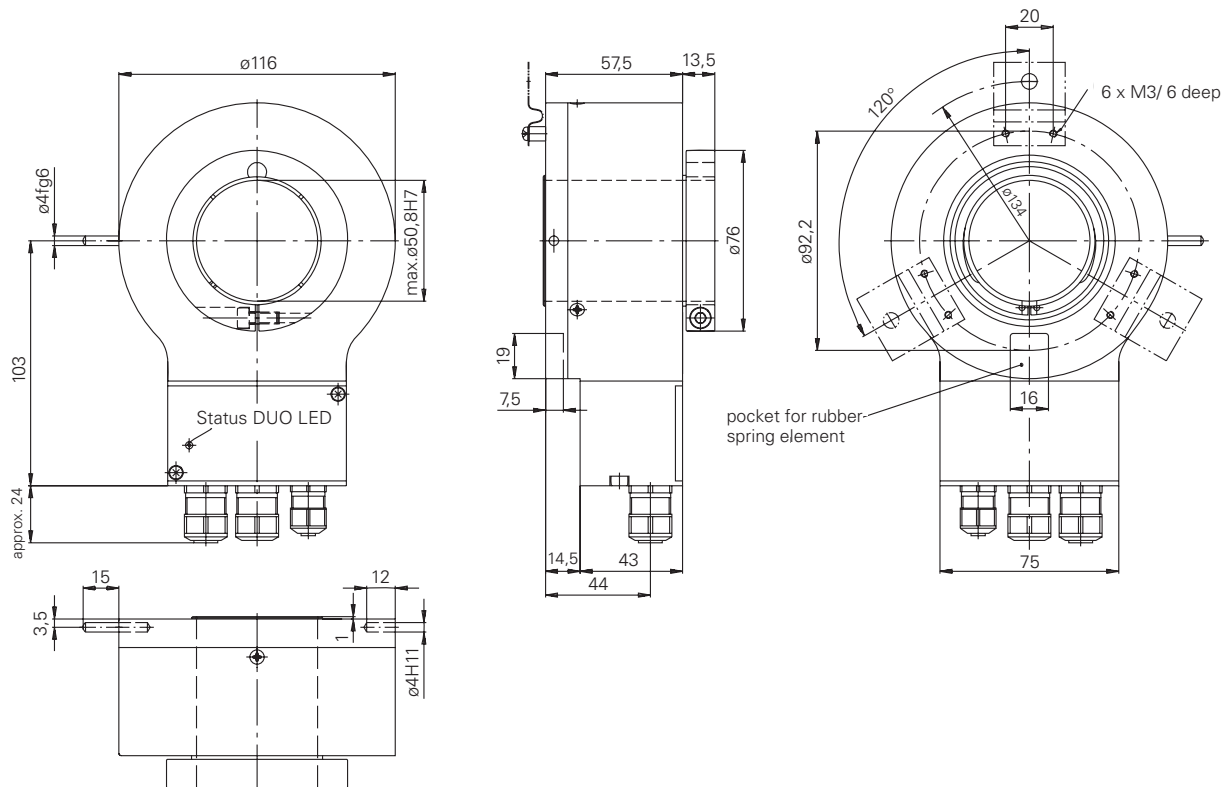


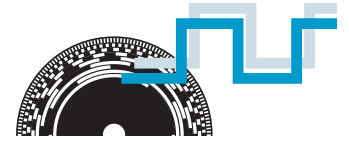
2

Absolute single-turn hollow shaft encoder BPSD flexible Profibus-DP, CANopen, DeviceNet

dimensions

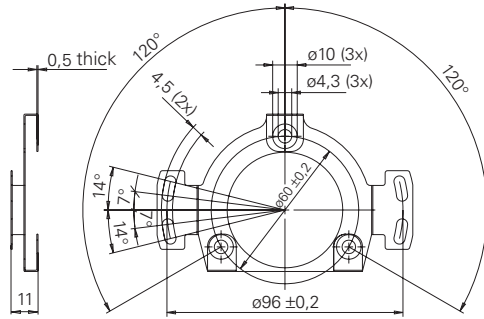
BPSD 50 with Profibus-DP





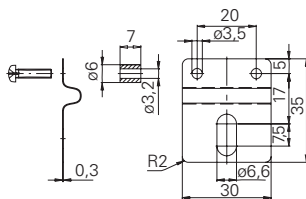
Profibus-DP, CANopen, DeviceNet

spring plate BPSD 25



part nr. 143969

spring plate BPSD 50



part nr. 147837

order designation

BPSD	<input type="checkbox"/>	G1P24C13/00	<input type="checkbox"/>	G	base encoder without bus cover
BPSD	<input type="checkbox"/>	G1P24	<input type="checkbox"/>	D	complete encoder
					shaft
					KF through hollow shaft 25,4 mm IP 54 with clamping ring
					KQ through hollow shaft 50,8 mm IP 54 with clamping ring
					interface
					P Profibus-DP
					B CANopen
					D DeviceNet
					housing diameter
					25 ø 90 mm (for shaft type KF)
					50 ø 116 mm (for shaft type KQ)

2

accessories

CD-ROM with GSD-/EDS-/XML- files and manuals	part nr. 147362
bus cover for Profibus-DP	part nr. 145145
for CANopen	part nr. 145144
for DeviceNet	part nr. 145143
	see chapter accessories
spring plate BPSD 25	part nr. 143969
BPSD 50	part nr. 147837

included

- rubber spring element and adjustment piece
- 2 cap screws
- 2 cylindrical screws M5 x 12 DIN912