

# Fiber Optic Adapters/Interconnect Sleeves

A LANscape® Solutions Product

Corning  
Cable Systems

## Applications

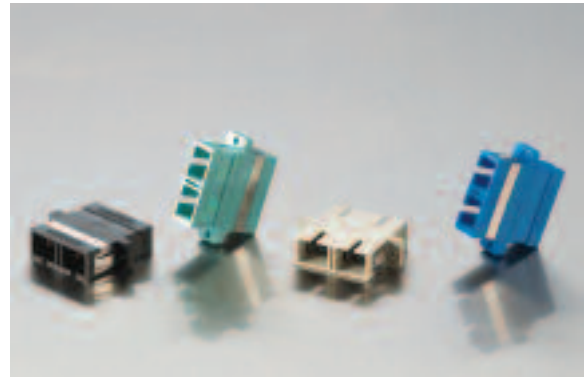
- Cable assembly house and manufacturing environments
- Local area networks at the workstation outlet

## Description

To complement our complete offering of factory- and field-installable connectors, Corning Cable Systems also offers a full line of adapters. In addition to supporting a variety of connector types, Corning Cable Systems adapters come in a variety of mounting configurations to ensure compatibility with the housing, panel, outlet or faceplate being utilized.

## Features / Benefits

- Available with or without the Corning logo
- Ordered as single packs or bulk packs
- Available in a variety of colors in support of TIA/EIA-568-B.3
- Available with ceramic, metal or composite alignment sleeves
- Available in a variety of mounting configurations to ensure compatibility with housings, panels, outlets and faceplates
- ST® compatible connector adapters available with metal or composite housings



SC Duplex Adapters | Photo LAN643



MT-RJ Adapters | Photo LAN641



LC Duplex Adapters | Photo LAN708

## Mechanical Specifications

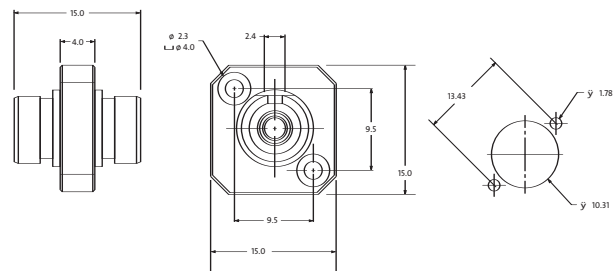
### Application Standards

FC	TIA/EIA-604-4
SC	TIA/EIA-604-3
ST® Compatible	TIA/EIA-604-2
LC	TIA/EIA-604-10
MT-RJ	TIA/EIA-604-12
MTP® Connector Adapter	TIA/EIA-604-5

Specification Drawings are available through Customer Service at 800-743-2671.

## Ordering Information

Part Number	Type	Single-Mode (SM)/ Multimode (MM)	Alignment Insert	Housing Description
-------------	------	----------------------------------	------------------	---------------------



FC Adapter (square flange) | Drawing CPC-220-3-7

### FC Adapter

ADP-FC00-MMXBC-NLS	FC	MM/SM	Metal	Metal; simplex; rectangular biconic flange; silver
ADP-FC00-MMXD11-NLS	FC	MM/SM	Metal	Metal; simplex; one-hole bulkhead; silver
ADP-FC00-MMXSF-NLS	FC	MM/SM	Metal	Metal; simplex; square flange; silver

## Ordering Information (continued)

Part Number	Type	Single-Mode (SM)/ Multimode (MM)	Alignment Insert	Housing Description
<b>SC Simplex Adapter</b>   Drawing CPC-220-3-3				
<b>SC Duplex Adapter</b>   Drawing CPC-220-3-4				

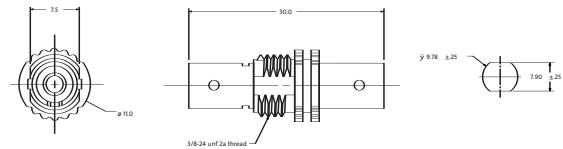
### SC Adapter

ADP-SC00-CMNFL-CLS	SC	SM	Metal	Composite; simplex; blue
ADP-SC00-CCNFL-CLS	SC	SM	Ceramic	Composite; simplex; blue
ADP-SC00-CMKFL-CLS	SC	MM 62.5 μm	Metal	Composite; simplex; beige
ADP-SC00-CCKFL-CLS	SC	MM 62.5 μm	Ceramic	Composite; simplex; beige
ADP-SC00-CMBFL-CLS	SC	MM 50 μm	Metal	Composite; simplex; black
ADP-SC00-CMAFL-NLS	SC	MM LOMMF 50 μm	Metal	Composite; simplex; aqua
ADP-SC00-CCAFL-NLS	SC	MM LOMMF 50 μm	Ceramic	Composite; simplex; aqua
ADP-SC00-CCGFL-CLS	SC	SM APC	Ceramic	Composite; simplex; green
ADP-DSC0-CMNFL-CLS	SC	SM	Metal	Composite; duplex; blue
ADP-DSC0-CCNFL-NLS	SC	SM	Ceramic	Composite; duplex; blue
ADP-DSC0-CMKFL-CLS	SC	MM 62.5 μm	Metal	Composite; duplex; beige
ADP-DSC0-CCKFL-CLS	SC	MM 62.5 μm	Ceramic	Composite; duplex; beige
ADP-DSC0-CCAFL-CLS	SC	MM LOMMF 50 μm	Ceramic	Composite; duplex; aqua
ADP-DSC0-CCBFL-CLS	SC	MM 50 μm	Ceramic	Composite; duplex; black
ADP-DSC0-CPKFL-CLS	SC	MM 62.5 μm	Composite	Composite; duplex; beige
ADP-DSC0-CCNFL-CLS	SC	SM	Ceramic	Composite; duplex; blue

LOMMF = Laser-optimized multimode fiber

## Ordering Information (continued)

Part Number	Type	Single-Mode (SM)/ Multimode (MM)	Alignment Insert	Housing Description
-------------	------	----------------------------------	------------------	---------------------

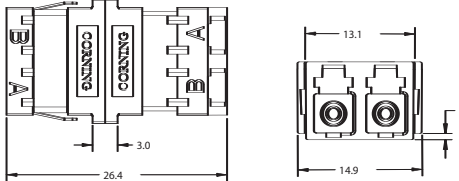
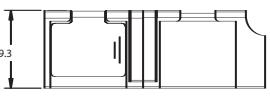


Threaded ST Compatible Connector Adapter | Drawing CPC-220-3-5

### ST® Compatible Connector Adapter

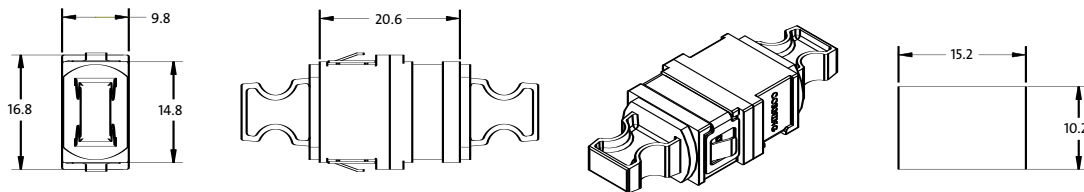
ADP-ST00-MMNTH-NLS	ST	SM	Metal	Metal; simplex; threaded; silver
ADP-ST00-MMKTH-NLS	ST	MM 62.5 μm	Metal	Metal; simplex; threaded; silver
ADP-ST00-MMBTH-NLS	ST	MM 50 μm	Metal	Metal; simplex; threaded; silver
ADP-ST00-MMATH-NLS	ST	MM LOMMF 50 μm	Metal	Metal; simplex; threaded; silver
ADP-ST00-MEKTH-NLS	ST	MM 62.5 μm	Ceramic	Metal; simplex; threaded; silver
ADP-ST00-MCBTH-NLS	ST	MM 50 μm	Ceramic	Metal; simplex; threaded; silver
ADP-ST00-MCATH-NLS	ST	MM LOMMF 50 μm	Ceramic	Metal; simplex; threaded; silver

## Ordering Information (continued)

Part Number	Type	Single-Mode (SM)/ Multimode (MM)	Alignment Insert	Housing Description
	LC Adapter (fits simplex SC footprint)			Drawing ZA-2823
	LC Adapter (fits simplex SC footprint)			Drawing ZA-2824

## LC Adapters (Fits Simplex SC Panel Opening)

ADP-DLC0-CCNRF-CLS	LC SR/JR	SM	Ceramic	Composite; duplex; blue
ADP-DLC0-CCKRF-CLS	LC SR/JR	62.5 μm	Ceramic	Composite; duplex; beige
ADP-DLC0-CCBRF-CLS	LC SR/JR	Standard 50 μm	Ceramic	Composite; duplex; black
ADP-DLC0-CCARF-CLS	LC SR/JR	LOMMF 50 μm	Ceramic	Composite; duplex; aqua
ADP-DLC0-CMKRF-CLS	LC SR/JR	62.5 μm	Metal	Composite; duplex; beige
ADP-DLC0-CMBRF-CLS	LC SR/JR	Standard 50 μm	Metal	Composite; duplex; black
ADP-DLC0-CMNRF-CLS	LC SR/JR	SM	Metal	Composite; duplex; blue



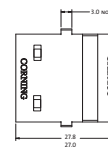
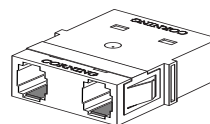
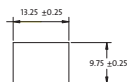
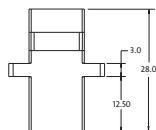
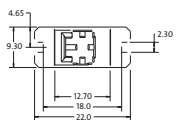
MTP® Connector Adapters | Drawing ZA-2788

## MTP® Connector Adapters

ADP-MTP0-CNXRFL-CLS	MTP 1MM	MM/SM	N/A	Composite; simplex; black
ADP-MTP0-CNXRFL-CLS	MTP	SM/MM	N/A	Composite; simplex; black
ADP-MTP0-CNXRFL-CLS	MTP	SM/MM	N/A	Composite; simplex; black
ADP-MTP0-CNXRFL-NLS	MTP	SM/MM	N/A	Composite; simplex; black
ADP-MTP0-CNARF-NLS	MTP	MM LOMMF 50 μm	N/A	Composite; simplex; aqua
ADP-MTP0-CNARF-CLS	MTP	MM LOMMF 50 μm	N/A	Composite; simplex; aqua

## Ordering Information (continued)

Part Number	Type	Single-Mode (SM)/ Multimode (MM)	Alignment Insert	Housing Description
-------------	------	----------------------------------	------------------	---------------------



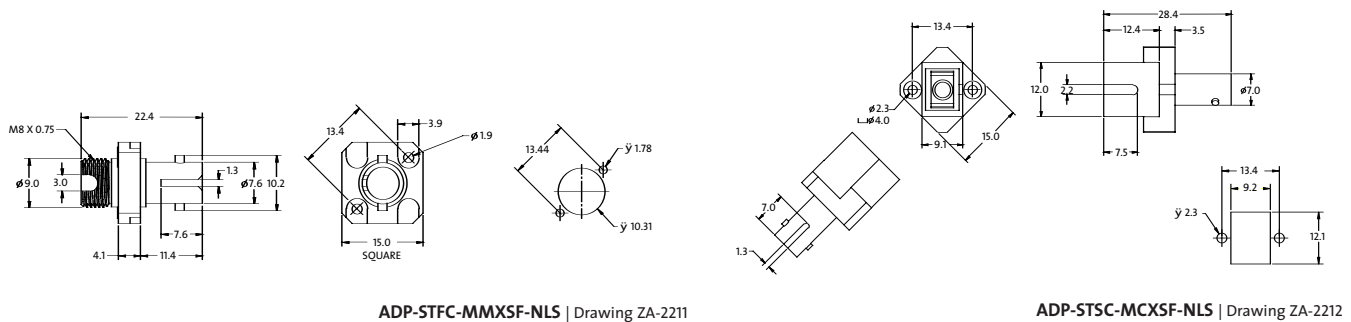
MT-RJ SC-Style (fits simplex SC footprint) | Drawing ZA-1976

MT-RJ Duplex Adapter (fits SC duplex footprint) | Drawing ZA-2586

### MT-RJ Adapters

ADP-MTRJ-CNBFL-CLS	MT-RJ Simplex SC Footprint	MM Standard 50 μm	N/A	Composite; simplex; black
ADP-MTRJ-CNKFL-CLS	MT-RJ Simplex SC Footprint	MM 62.5 μm	N/A	Composite; simplex; beige
ADP-MTRJ-CNNFL-CLS	MT-RJ Simplex SC Footprint	SM	N/A	Composite; simplex; blue
ADP-MTRJ-CNAFL-CLS	MT-RJ Simplex SC Footprint	LOMMF 50 μm	N/A	Composite; simplex; aqua
ADP-MTRJ-CNKFL-CLS	MT-RJ	MM 62.5 μm	N/A	Composite; simplex; beige
ADP-MTRJ-CNKFL-NLS	MT-RJ	MM 62.5 μm	N/A	Composite; simplex; beige
ADP-MTRJ-CNNFL-CLS	MT-RJ	SM	N/A	Composite; simplex; blue
ADP-MTRJ-CNNFL-NLS	MT-RJ	SM	N/A	Composite; simplex; blue
ADP-MTRJ-CNAFL-CLS	MT-RJ	MM LOMMF 50 μm	N/A	Composite; simplex; aqua
ADP-MTRJ-CNAFL-NLS	MT-RJ	MM LOMMF 50 μm	N/A	Composite; simplex; aqua
ADP-MTRJ-CNBFL-CLS	MT-RJ	MM 50 μm	N/A	Composite; simplex; black
ADP-MTRJ-CNBFL-NLS	MT-RJ	MM 50 μm	N/A	Composite; simplex; black
ADP-DMTR-CNBFRF-CLS	MT-RJ Duplex SC Footprint	Standard 50 μm	N/A	Composite; duplex; black
ADP-DMTR-CNKRF-CLS	MT-RJ Duplex SC Footprint	62.5 μm	N/A	Composite; duplex; beige
ADP-DMTR-CNNRF-CLS	MT-RJ Duplex SC Footprint	SM	N/A	Composite; duplex; blue
ADP-DMTR-CNARF-CLS	MT-RJ Duplex SC Footprint	LOMMF 50 μm	N/A	Composite; duplex; aqua
ADP-DMTR-CNKRF-CLS	MT-RJ	MM 62.5 μm	N/A	Composite; duplex; beige
ADP-DMTR-CNKRF-NLS	MT-RJ	MM 62.5 μm	N/A	Composite; duplex; beige
ADP-DMTR-CNBFRF-CLS	MT-RJ	MM 50 μm	N/A	Composite; duplex; black
ADP-DMTR-CNBFRF-NLS	MT-RJ	MM 50 μm	N/A	Composite; duplex; black
ADP-DMTR-CNNRF-CLS	MT-RJ	SM	N/A	Composite; duplex; blue
ADP-DMTR-CNNRF-NLS	MT-RJ	SM	N/A	Composite; duplex; blue
ADP-DMTR-CNARF-CLS	MT-RJ	MM LOMMF 50 μm	N/A	Composite; duplex; aqua
ADP-DMTR-CNARF-NLS	MT-RJ	MM LOMMF 50 μm	N/A	Composite; duplex; aqua

All Corning Cable Systems MT-RJ adapters feature patented dual polarity capability with lockout tab (patent 6,634,796).



ADP-STFC-MMXSF-NLS | Drawing ZA-2211

ADP-STSC-MCXSF-NLS | Drawing ZA-2212

## Ordering Information (continued)

Part Number	Type	Single-Mode (SM)/ Multimode (MM)	Alignment Insert	Housing Description
<b>Hybrid Adapters</b>				
ADP-STFC-MMXSF-NLS	ST/FC Simplex	MM/SM	Metal	Metal; simplex; silver
ADP-STSC-CCXFL-NLS	ST/SC Simplex	MM/SM	Ceramic	Composite; simplex; blue
ADP-DSCS-CCXFL-CLS	ST/SC Duplex	MM/SM	Ceramic	Composite; duplex; black
ADP-DSCS-CMXFL-CLS	ST/SC Duplex	MM/SM	Metal	Composite; duplex; black

ST refers to ST® compatible.

## Adapter Accessories

Part Number	Description
ADP-ST00-CAP	Dustcap for ST® compatible Adapter, black
ADP-FC00-CAP	Dustcap for FC Adapter, black
ADP-MTP0-CAP	Dustcap for MTP® Connector Adapter, black
ADP-DSC0-CAP	Dustcap for SC Duplex Adapter, black
ADP-SC00-CAP	Dustcap for SC Adapter, black
ADP-LC00-CAP	Dustcap for LC Adapter, clear/opaque

# Fiber Optic Adapters/Interconnect Sleeves

A LANscape® Solutions Product

Corning  
Cable Systems

**Corning Cable Systems LLC • PO Box 489 • Hickory, NC 28603-0489 USA**  
**800-743-2675 • FAX: 828-901-5973 • International: +1-828-901-5000 • [www.corning.com/cablesystems](http://www.corning.com/cablesystems)**

Corning Cable Systems reserves the right to improve, enhance and modify the features and specifications of Corning Cable Systems products without prior notification. LANscape is a registered trademark of Corning Cable Systems Brands, Inc. Discovering Beyond Imagination is a trademark of Corning Incorporated. MTP is a registered trademark of USConec, Ltd. ST is a registered trademark of Lucent Technologies. All other trademarks are the properties of their respective owners. Corning Cable Systems is ISO 9001 certified. © 2002, 2006 Corning Cable Systems. All rights reserved. Published in the USA. LAN-304-EN / May 2006 / pdf



**CORNING**  
Discovering Beyond Imagination

**LANscape®**  
Fiber Cabling Solutions for Premises Networks