

2 • ROW Connectors

Cable to
Board or Panel

WTA-WTA

Examples:

PLUG: WTA 26 PC JT
RECEPTACLE: WTA 26 SAD9 JL

PLUG

RECEPTACLE

SERIES

WTA = 2-row, straight-plug, w/o mounting ears

WTA = 2-row, straight, receptacle, w/o mounting ears

NUMBER OF CONTACTS

10, 14, 20, 24, 26, 30, 36, 40, 44, 50, 54, 56, 60, 66, 70

10, 14, 20, 24, 26, 30, 36, 40, 44, 50, 54, 56, 60, 66, 70

TYPE OF CONTACTS

- Pin or socket contacts can be used in either plug or receptacle.
- When pin contacts are use, standard hardware orientation places the female hardware next to the #1 pin contact.
- When socket contacts are used, standard hardware orientation places the male hardware next to the #1 socket.

PC	Pin, straight, solder cup	SAC	Socket, straight, solder cup
PD5	Pin, straight, dip solder, .078	SAD7	Socket, straight, dip solder, .109
PD7	Pin, straight, dip solder, .109	SAD9	Socket, straight, dip solder, .140
PD9	Pin, straight, dip solder, .140	SAD11	Socket, straight, dip solder, .172
PD11	Pin, straight, dip solder, .172	SAF3	Socket, straight, flex-circuit, .050
PD13	Pin, straight, dip solder, .203	SAF6	Socket, straight, flex-circuit, .093
PD15	Pin, straight, dip solder, .234	SAF9	Socket, straight, flex-circuit, .140
PD20	Pin, straight, dip solder, .312	SAP	Socket, straight, pin termination, .150, connector saver
PF3	Pin, straight, flex-circuit, .050	SAW24	Socket, straight, wire wrap, .375
PF6	Pin, straight, flex circuit, .093	SAW40	Socket, straight, wire wrap, .625
PF8	Pin, straight, flex circuit, .125		
PW34	Pin, straight, wire wrap, .513		
PW40	Pin, straight, wire wrap, .625		

TYPE OF HARDWARE

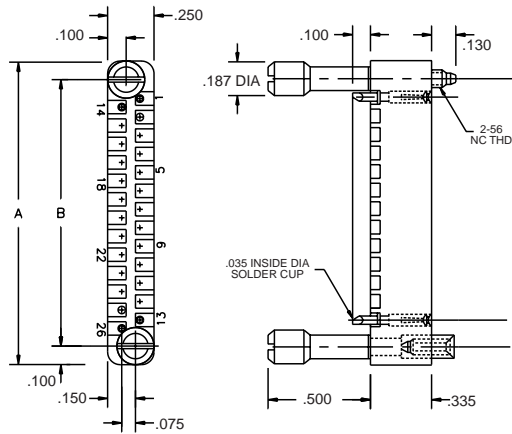
- Jackset hardware determines image of connector. Must specify image with Guide Set Hardware.
- Plug facial seal gaskets and hoods; order separately or add "Q" in part number. Example: WTA10PD9QJ. See "Gaskets" and "Hoods" under next tab for instructions.

JT = Turning jackset, .500
JTA = Turning Jackset, .200
JTB = Hex turning jackset, .200
JTC = Hex turning jackset, .500

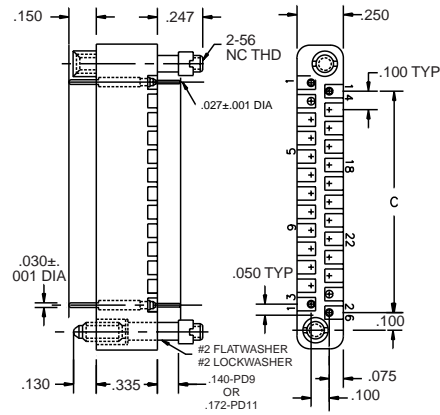
J = Fixed jackset
JL = Fixed jackset, long

OPTIONS

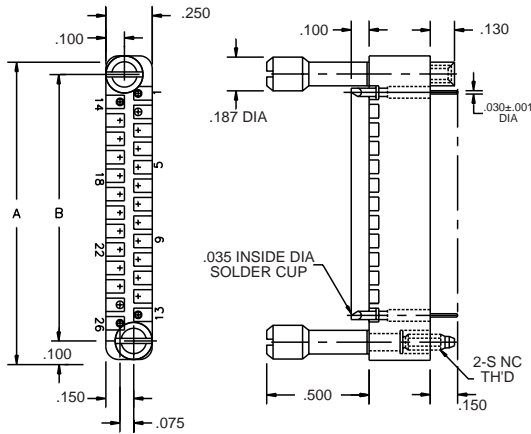
- OPTION CODES: Add to the end of the part number. Example: WTA10SAD9J-D01. Call factory for additional codes.
- 443: Polarized Pin installed in contact position noted by dash number. See "Polarization" under next tab.
- 444: Contact position noted by dash number is left open (to mate with -443). See "Polarization" under next tab.
- B82: Termination face sealed against conformal coating.
- D01: Pre-tin contact terminations. (Solder cup, wire wrap and flex circuit contacts are excluded.)
- D54: Combine B82 and D01 special codes.
- G69: Solder cups are fixed in an outward orientation, otherwise contacts can rotate.



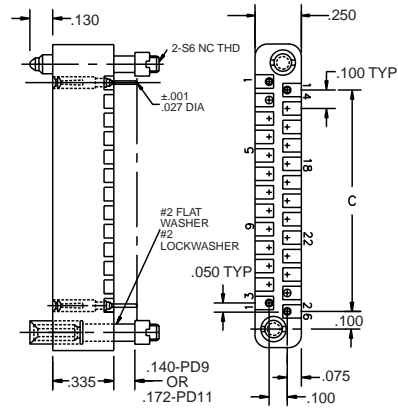
EXAMPLE: WTA26SACJT



EXAMPLE: WTA26PD9JL



EXAMPLE: WTA26PCJT



EXAMPLE: WTA26SAD9JL

WTA-WTA Dimensions

SIZE	A	B	C
10	.850	.650	.400
14	1.050	.850	.600
20	1.350	1.150	.900
24	1.550	1.350	1.100
26	1.650	1.450	1.200
30	1.850	1.650	1.400
36	2.150	1.950	1.700
40	2.350	2.150	1.900
44	2.550	2.350	2.100
50	2.850	2.650	2.400
54	3.050	2.850	2.600
56	3.150	2.950	2.700
60	3.350	3.150	2.900
66	3.650	3.450	3.200
70	3.850	3.650	3.400