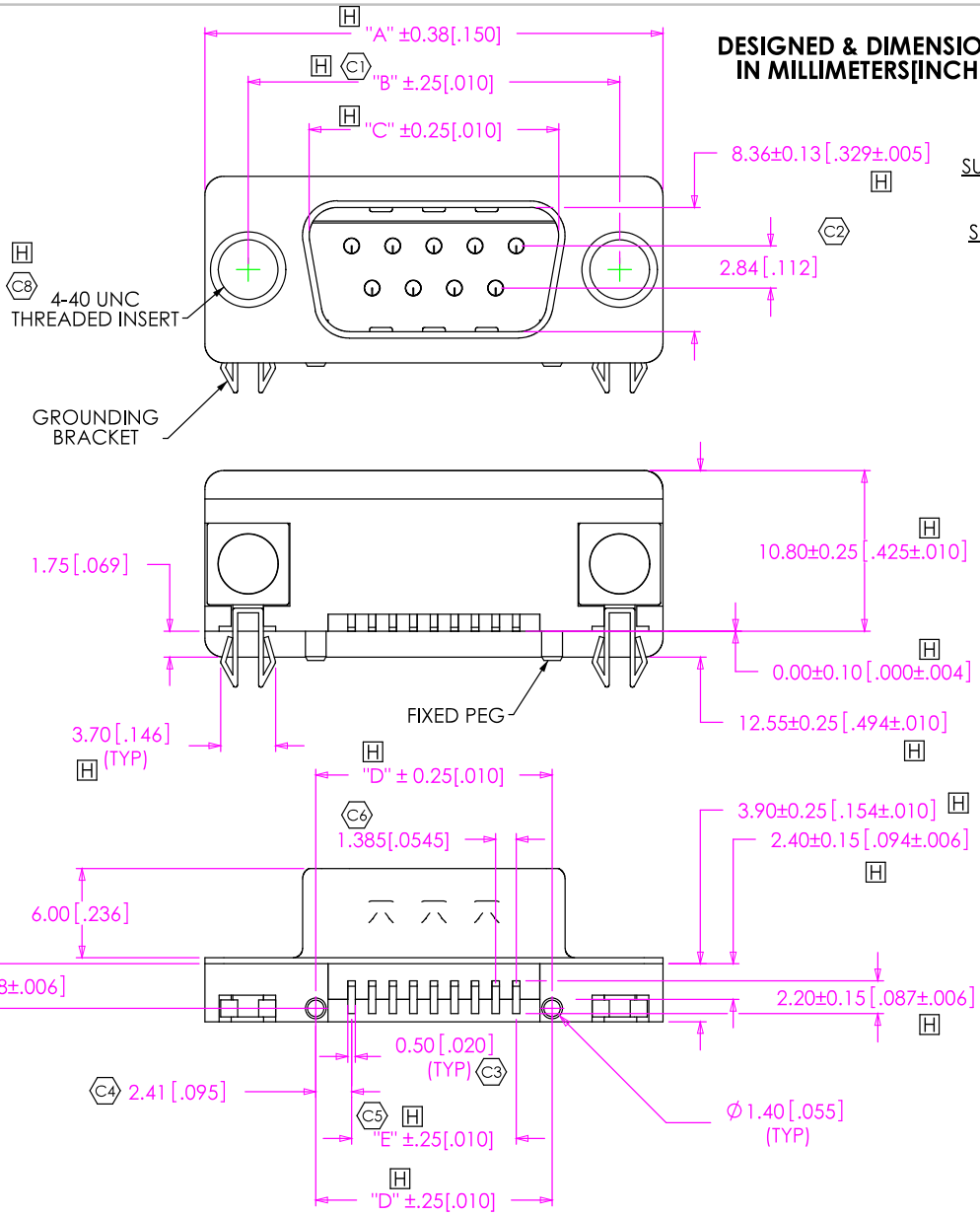


DO NOT SCALE FROM THIS PRINT

DESIGNED & DIMENSIONED IN MILLIMETERS [INCHES]

DSM-SM-X-XX-P-X-FB-XX-X



- SURFACE MOUNT
- SHELL SIZE-POSITIONS
 - E-09 = 9 POSITION
 - B-25 = 25 POSITION
- GENDER
 - P: PLUG
- EL OPTION
 - R: ROHS COMPLIANT
- FACE MOUNT
 - FT: FLUSHED THREADED INSERTS
 - RJ: REMOVABLE JACK SCREWS (JS-03)
 - HJ: HYBRID JACK (JS-05, SEE NOTE 2)
- BOARD MOUNT
 - FB: FORKED BOARD LOCK
- PLATING
 - F: FLASH SELECTIVE GOLD (GOLD OVER NICKEL)
 - L: LIGHT SELECTIVE GOLD (.000010" GOLD OVER NICKEL)
 - S: SELECTIVE GOLD (.000030" GOLD OVER NICKEL) (SHELL PLATING: NICKEL)

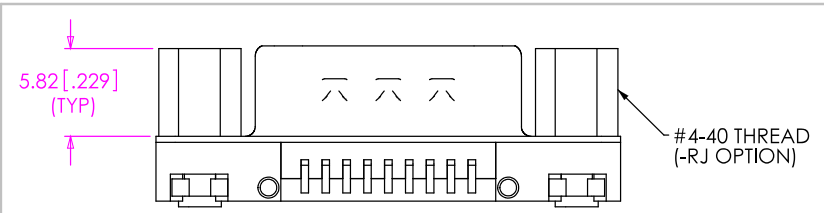
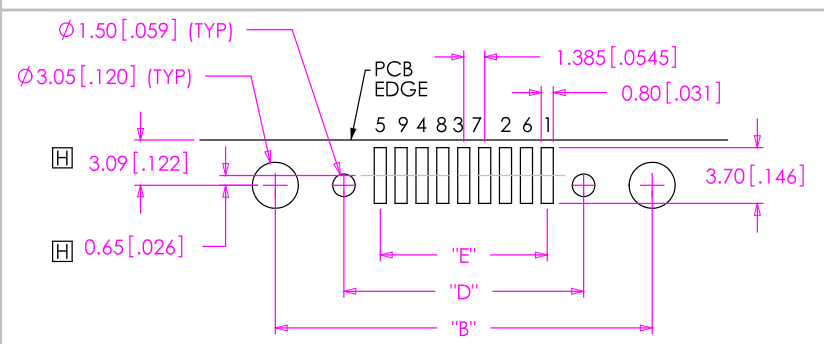


FIGURE 2 (SAME, EXCEPT AS SHOWN)



RECOMMENDED PCB LAYOUT

NOTES:

1. © REPRESENTS A CRITICAL DIMENSION.
2. HYBRID JACKSCREW HAS METRIC M3 HEAD AND ENGLISH 4-40 TAIL.

TABLE 1

STYLE	"A"	"B"	"C"	"D"	"E"
E-09	30.81 [1.213]	24.99 [0.984]	16.92 [0.666]	15.90 [0.626]	11.08 [0.436]
B-25	53.04 [2.088]	47.04 [1.852]	38.96 [1.534]	38.06 [1.498]	33.24 [1.309]

UNLESS OTHERWISE SPECIFIED, DIMENSIONS ARE IN MM. TOLERANCES ARE:
 DECIMALS ANGLES
 .XX: ±2.54 [100] 2°
 .XXX: ±0.50 [0.020]
 .XXXX: ±0.380 [0.015]

PROPRIETARY NOTE
 THIS DOCUMENT CONTAINS INFORMATION CONFIDENTIAL AND PROPRIETARY TO SAMTEC, INC. AND SHALL NOT BE REPRODUCED OR TRANSFERRED TO OTHER DOCUMENTS OR DISCLOSED TO OTHERS OR USED FOR ANY PURPOSE OTHER THAN THAT WHICH IT WAS OBTAINED WITHOUT THE EXPRESSED WRITTEN CONSENT OF SAMTEC, INC.

SAMTEC

520 Park East Blvd. New Albany, IN 47151
 Phone (812) 944-6733 Fax (812) 948-5047
 e-Mail: INFO@SAMTEC.COM CODE: 55322

MATERIAL: DO NOT SCALE DRAWING
 INSULATOR: NYLON 6T, FIBER REINFORCED
 UL 94 V-0
 CONTACT: PHOSPHOR BRONZE
 SHELL: COLD ROLLED STEEL; NICKEL, ZINC OR TIN PLATED
 SHELL THICKNESS: 0.40MM
 F:\DWG\MISC\MKTG\DSM-SM-X-XX-P-X-FB-XX-X-MKT.SLDDRW



DESCRIPTION: D-SUB SURFACE MOUNT
 DWG. NO. DSM-SM-X-XX-P-X-FB-XX-X
 BY: B, COOPER 1/22/2007 SHEET 1 OF 1