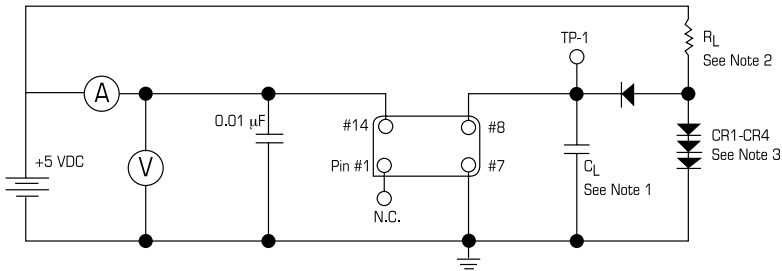


TTL CLOCK OSCILLATORS (FULL & HALF SIZE)

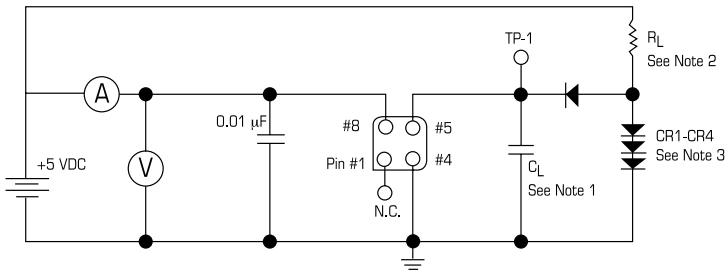
MODEL CO 5.0VDC

Model	CO	CO
Frequency Range	10kHz ~ 69.999MHz	70MHz ~ 160.0MHz
Frequency Stability	100ppm Standard, Optional Tolerances Available	100ppm Standard, Optional Tolerances Available
Operating Temperature Range	0°C ~+70°C Extended Temperature Ranges Available	0°C ~+70°C Extended Temperature Ranges Available
Storage Temperature Range	-55°C ~+125°C	-55°C ~+125°C
Current Consumption	10.0KHz ~ 23.999MHz: 15mA Max 24.000MHz ~ 69.999MHz: 30mA Max	70.0MHz ~ 99.999MHz: 30mA Max 100.00MHz ~ 129.9MHz: 35mA Max 130.00MHz ~ 160.00MHz: 40mA Max
Supply Voltage	+5 VDC ± 10%	+5 VDC ± 10%
Symmetry	60/40 @ 50% Vcc, Optional Tolerances Available	60/40 @ 50% Vcc, Optional Tolerances Available
Rise & Fall Time (Tr & Tf)	10 nSec Max	4 nSec Max
Logic "1"	2.4 VDC Min	2.4 VDC Min
Logic "0"	0.4 VDC Max	0.4 VDC Max
Output Load (Max)	10TTL	2TTL Other Loads Available
Aging	< 5ppm per year	< 5ppm per year



FULL SIZE TEST CIRCUIT

FULL SIZE TTL	
PINS	CONNECTIONS
1	N.C.
7	GND
8	OUTPUT
14	+5 VDC ±10%



HALF SIZE TEST CIRCUIT

HALF SIZE TTL	
PINS	CONNECTIONS
1	N.C.
4	GND
5	OUTPUT
8	+5 VDC ±10%

- NOTE: 1. C_L Capacitance includes probe and test jig (15pF typical)
 2. $R_L = 400\Omega - 10\text{ TTL}$
 $2k\Omega - 10\text{ LSTTL}$
 3. All diodes are 1N941, 1N43064 or equivalent

