

**Type: CDRH30D16R**

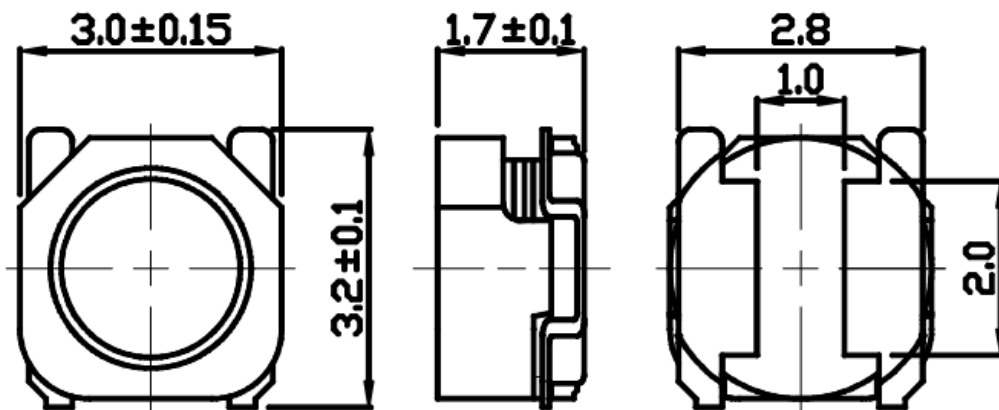
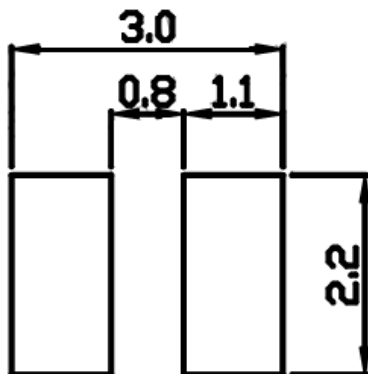
# Under Development

**◆ Product Description**

- 3.3×3.15mm Max.(L×W), 1.8mm Max. Height.
- Inductance range: 1.0~33  $\mu$  H.
- Rated current range: 0.33~1.88A.
- Custom design is available.


**◆ Feature**

- Magnetically shielded construction.
- Storage temperature range: -40°C~+105°C.
- Operating temperature range: -40°C~+105°C (including coil's self-heat).
- Product weight: 0.054 g(Ref.).
- Ideally used in Slim LCD display & TV ,etc.
- RoHS compliance.

**◆ Dimensions (mm)**

**◆ Land Pattern (mm)**


**Type: CDRH30D16R**
**◆ Specification**

Part No.	Stamp	Inductance ( $\mu$ H) at 100KHz	D.C.R. (m $\Omega$ ) (at20°C)	Saturation Current (A) ※1 (at 20°C)	Temperature Rise Current (A) ※2
CDRH30D16RNP-1R0NC	A	1.0 $\pm$ 30%	30 $\pm$ 25%	1.88	2.73
CDRH30D16RNP-1R5NC	B	1.5 $\pm$ 30%	38 $\pm$ 25%	1.52	2.30
CDRH30D16RNP-2R2NC	C	2.2 $\pm$ 30%	47 $\pm$ 25%	1.28	1.95
CDRH30D16RNP-3R3NC	D	3.3 $\pm$ 30%	75 $\pm$ 25%	1.05	1.52
CDRH30D16RNP-4R7NC	E	4.7 $\pm$ 30%	120 $\pm$ 20%	0.88	1.11
CDRH30D16RNP-6R8MC	F	6.8 $\pm$ 20%	175 $\pm$ 20%	0.74	0.97
CDRH30D16RNP-100MC	G	10 $\pm$ 20%	210 $\pm$ 20%	0.60	0.86
CDRH30D16RNP-150MC	H	15 $\pm$ 20%	415 $\pm$ 20%	0.50	0.56
CDRH30D16RNP-220MC	J	22 $\pm$ 20%	520 $\pm$ 20%	0.41	0.52
CDRH30D16RNP-330MC	K	33 $\pm$ 20%	790 $\pm$ 20%	0.33	0.39

※1. Saturation current: The DC current at which the inductance decreases to 70% of its nominal value.

※2. Temperature rise current: The DC current at which the temperature rise is  $\Delta t=40^{\circ}\text{C}$ . ( $T_a=20^{\circ}\text{C}$ ).