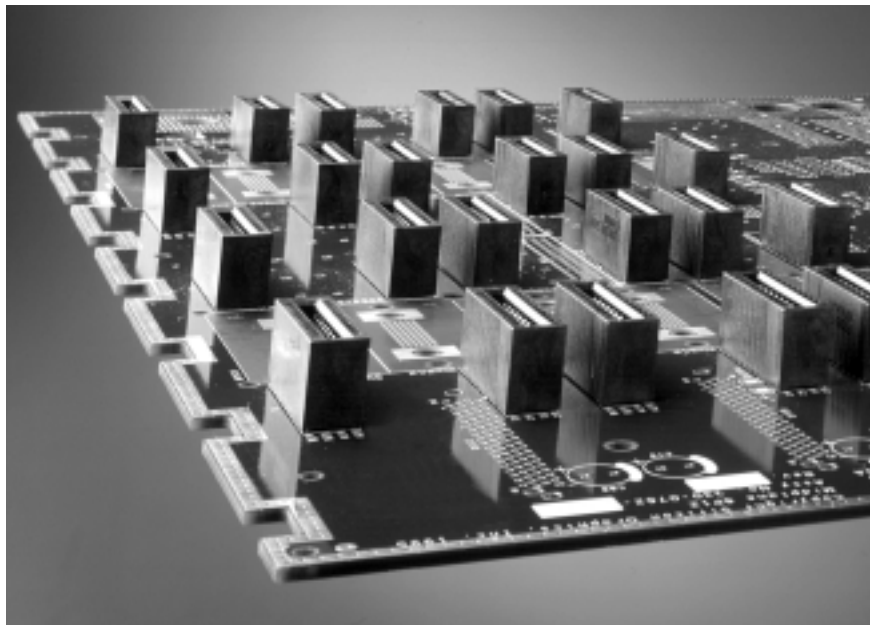


DESCRIPTION/APPLICATION

Thomas & Betts Press-fit connectors allow for easy conversion from dip solder to press fit termination into backplanes without any board redesign. Thomas & Betts compliant pin connectors meet or exceed requirements of all industry standards, including Bellcore specifications, which address critical performance issues such as hole retention, hole deformation and environmental performance.

DESIGN ADVANTAGES

- Does not involve any board redesign.
- Our full line of hand tools allow pins to be repaired from the front or rear of the connector.
- Unique pin geometry allows for even distribution of forces reducing axial pin rotation and preserving perpendicularity to the PCB board.
- Edge and side coining provides a uniform pin radius ensuring maximum contact without “skiving” the plated hole.
- Various tail lengths provide design flexibility with the ability to connect on both sides of the motherboard.
- Solderless technology reduces environmental waste involved in heavy metal solder processes.

PRESS-FIT CARDEDGE

**.156" CENTER-TO-CENTER
.200" ROW-TO-ROW
WITHOUT STANDOFFS**



PHYSICAL PROPERTIES

INSULATION RESISTANCE: 5000 megohms minimum.
 CONTACT RETENTION INTO PCB: 5 lbs.
 INSERTION/WITHDRAWAL FORCE: 8 oz./2 oz. average contact pair using .0620 steel blade.
 INSULATOR BODY: Glass filled thermoplastic, UL rating 94V-O
 COLOR: Black
 CONTACTS: High strength copper alloy.
 CONTACT PLATING: 50 microinches nickel underplate with 30 microinches gold in the mating area, tin/lead on tails, 100 microinches minimum

ELECTRICAL PROPERTIES

OPERATING VOLTAGE: 1500 VDC (sea level)
 CURRENT RATING: 3 Amperes
 INITIAL CONTACT RESISTANCE: 10 milliohms

ENVIRONMENTAL PROPERTIES

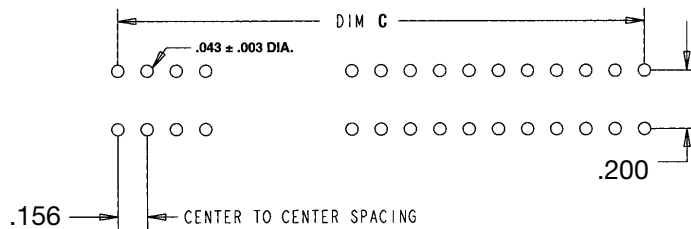
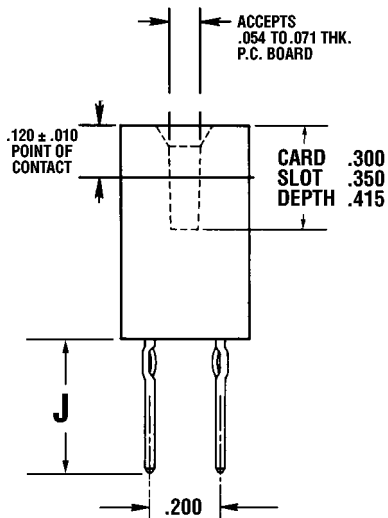
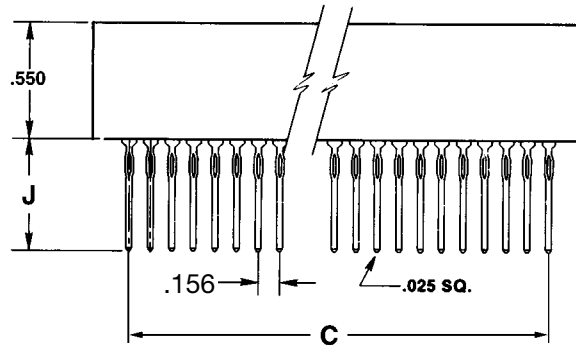
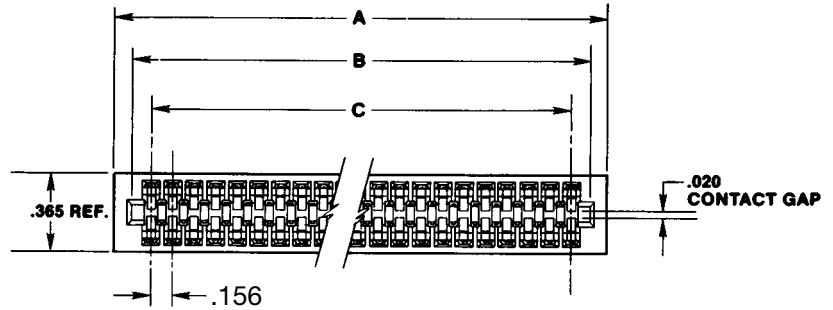
OPERATING TEMPERATURE: -55°C to +125°C
 TEMPERATURE CYCLING: MIL-STD-202 method 107
 VIBRATION: MIL-STD-202, method 204

APPLICATION TOOLING

INSERTION TOOL: Cat. # 98231, see page 380

DAUGHTER CARD

See page 347 for layout



Opens and open/closed ends are available. Consult factory.

ORDERING INFORMATION -

.156 CENTER-TO-CENTER / .200 ROW-TO-ROW

# OF DUAL READOUT POS.	CATALOG NUMBER			DIMENSIONS		
	.300 CARD SLOT DEPTH	.350 CARD SLOT DEPTH	.415 CARD SLOT DEPTH	A	B	C
.670 TAIL LENGTH (DIM "J")						
6	C6D06PF29032	C6D06PF29142	C6D06PF29022	1.221	1.100	.780
10	C6D10PF29032	C6D10PF29142	C6D10PF29022	1.845	1.724	1.404
12	C6D12PF29032	C6D12PF29142	C6D12PF29022	2.157	2.036	1.716
15	C6D15PF29032	C6D15PF29142	C6D15PF29022	2.625	2.504	2.184
18	C6D18PF29032	C6D18PF29142	C6D18PF29022	3.093	2.972	2.652
20	C6D20PF29032	C6D20PF29142	C6D20PF29022	3.405	3.284	2.964
22	C6D22PF29032	C6D22PF29142	C6D22PF29022	3.717	3.596	3.276
25	C6D25PF29032	C6D25PF29142	C6D25PF29022	4.185	4.064	3.744
28	C6D28PF29032	C6D28PF29142	C6D28PF29022	4.653	4.532	4.212
30	C6D30PF29032	C6D30PF29142	C6D30PF29022	4.965	4.844	4.524
31	C6D31PF29032	C6D31PF29142	C6D31PF29022	5.121	5.000	4.680
35	C6D35PF29032	C6D35PF29142	C6D35PF29022	5.745	5.624	5.304
36	C6D36PF29032	C6D36PF29142	C6D36PF29022	5.901	5.780	5.460
40	C6D40PF29032	C6D40PF29142	C6D40PF29022	6.525	6.404	6.085
43	C6D43PF29032	C6D43PF29142	C6D43PF29022	6.993	6.872	6.552
.180 TAIL LENGTH (DIM "J")						
6	C6D06PF29033	C6D06PF29143	C6D06PF29023	1.221	1.100	.780
10	C6D10PF29033	C6D10PF29143	C6D10PF29023	1.845	1.724	1.404
12	C6D12PF29033	C6D12PF29143	C6D12PF29023	2.157	2.036	1.716
15	C6D15PF29033	C6D15PF29143	C6D15PF29023	2.625	2.504	2.184
18	C6D18PF29033	C6D18PF29143	C6D18PF29023	3.093	2.972	2.652
20	C6D20PF29033	C6D20PF29143	C6D20PF29023	3.405	3.284	2.964
22	C6D22PF29033	C6D22PF29143	C6D22PF29023	3.717	3.596	3.276
25	C6D25PF29033	C6D25PF29143	C6D25PF29023	4.185	4.064	3.744
28	C6D28PF29033	C6D28PF29143	C6D28PF29023	4.653	4.532	4.212
30	C6D30PF29033	C6D30PF29143	C6D30PF29023	4.965	4.844	4.524
31	C6D31PF29033	C6D31PF29143	C6D31PF29023	5.121	5.000	4.680
35	C6D35PF29033	C6D35PF29143	C6D35PF29023	5.745	5.624	5.304
36	C6D36PF29033	C6D36PF29143	C6D36PF29023	5.901	5.780	5.460
40	C6D40PF29033	C6D40PF29143	C6D40PF29023	6.525	6.404	6.085
43	C6D43PF29033	C6D43PF29143	C6D43PF29023	6.993	6.872	6.552

**.156" CENTER-TO-CENTER
.200" ROW-TO-ROW
WITH STANDOFFS**



PHYSICAL PROPERTIES

INSULATION RESISTANCE: 5000 megohms minimum.
 CONTACT RETENTION INTO PCB: 5 lbs.
 INSERTION/WITHDRAWAL FORCE: 8 oz./2 oz. average contact pair using .0620 steel blade.
 INSULATOR BODY: Glass filled thermoplastic, UL rating 94V-0
 COLOR: Black
 CONTACTS: High strength copper alloy.
 CONTACT PLATING: 50 microinches nickel underplate with 30 microinches gold in the mating area, tin/lead on tails, 100 microinches minimum

ELECTRICAL PROPERTIES

OPERATING VOLTAGE: 1500 VDC (sea level)
 CURRENT RATING: 3 Amperes
 INITIAL CONTACT RESISTANCE: 10 milliohms

ENVIRONMENTAL PROPERTIES

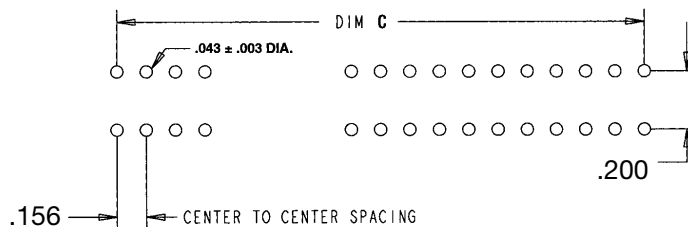
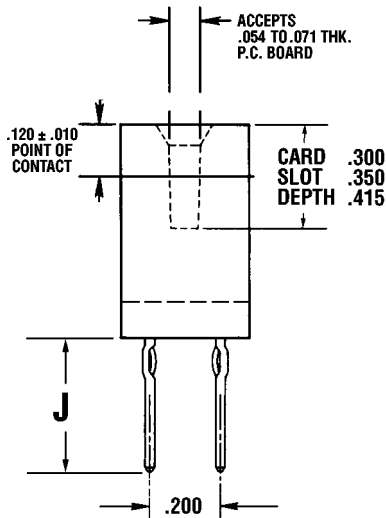
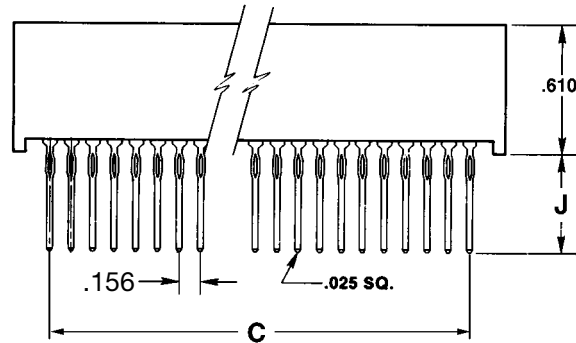
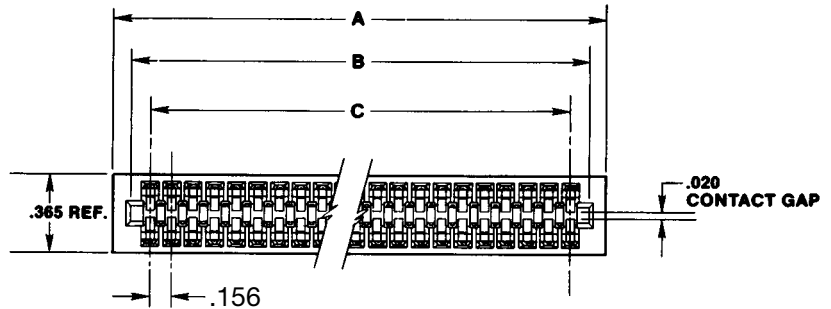
OPERATING TEMPERATURE: -55°C to +125°C
 TEMPERATURE CYCLING: MIL-STD-202 method 107
 VIBRATION: MIL-STD-202, method 204

APPLICATION TOOLING

INSERTION TOOL: Cat. # 98231, see page 380

DAUGHTER CARD

See page 347 for layout



Opens and open/closed ends are available. Consult factory.

ORDERING INFORMATION -

.156 CENTER-TO-CENTER / .200 ROW-TO-ROW

# OF DUAL READOUT POS.	CATALOG NUMBER			DIMENSIONS		
	.300 CARD SLOT DEPTH	.350 CARD SLOT DEPTH	.415 CARD SLOT DEPTH	A	B	C
.670 TAIL LENGTH (DIM "J")						
6	C6D06PF29012	C6D06PF29132	C6D06PF29042	1.221	1.100	.780
10	C6D10PF29012	C6D10PF29132	C6D10PF29042	1.845	1.724	1.404
12	C6D12PF29012	C6D12PF29132	C6D12PF29042	2.157	2.036	1.716
15	C6D15PF29012	C6D15PF29132	C6D15PF29042	2.625	2.504	2.184
18	C6D18PF29012	C6D18PF29132	C6D18PF29042	3.093	2.972	2.652
20	C6D20PF29012	C6D20PF29132	C6D20PF29042	3.405	3.284	2.964
22	C6D22PF29012	C6D22PF29132	C6D22PF29042	3.717	3.596	3.276
25	C6D25PF29012	C6D25PF29132	C6D25PF29042	4.185	4.064	3.744
28	C6D28PF29012	C6D28PF29132	C6D28PF29042	4.653	4.532	4.212
30	C6D30PF29012	C6D30PF29132	C6D30PF29042	4.965	4.844	4.524
31	C6D31PF29012	C6D31PF29132	C6D31PF29042	5.121	5.000	4.680
35	C6D35PF29012	C6D35PF29132	C6D35PF29042	5.745	5.624	5.304
36	C6D36PF29012	C6D36PF29132	C6D36PF29042	5.901	5.780	5.460
40	C6D40PF29012	C6D40PF29132	C6D40PF29042	6.525	6.404	6.085
43	C6D43PF29012	C6D43PF29132	C6D43PF29042	6.993	6.872	6.552
.180 TAIL LENGTH (DIM "J")						
6	C6D06PF29013	C6D06PF29133	C6D06PF29043	1.221	1.100	.780
10	C6D10PF29013	C6D10PF29133	C6D10PF29043	1.845	1.724	1.404
12	C6D12PF29013	C6D12PF29133	C6D12PF29043	2.157	2.036	1.716
15	C6D15PF29013	C6D15PF29133	C6D15PF29043	2.625	2.504	2.184
18	C6D18PF29013	C6D18PF29133	C6D18PF29043	3.093	2.972	2.652
20	C6D20PF29013	C6D20PF29133	C6D20PF29043	3.405	3.284	2.964
22	C6D22PF29013	C6D22PF29133	C6D22PF29043	3.717	3.596	3.276
25	C6D25PF29013	C6D25PF29133	C6D25PF29043	4.185	4.064	3.744
28	C6D28PF29013	C6D28PF29133	C6D28PF29043	4.653	4.532	4.212
30	C6D30PF29013	C6D30PF29133	C6D30PF29043	4.965	4.844	4.524
31	C6D31PF29013	C6D31PF29133	C6D31PF29043	5.121	5.000	4.680
35	C6D35PF29013	C6D35PF29133	C6D35PF29043	5.745	5.624	5.304
36	C6D36PF29013	C6D36PF29133	C6D36PF29043	5.901	5.780	5.460
40	C6D40PF29013	C6D40PF29133	C6D40PF29043	6.525	6.404	6.085
43	C6D43PF29013	C6D43PF29133	C6D43PF29043	6.993	6.872	6.552