



SURFACE-MOUNT POWER INDUCTORS

ASPI SERIES

0403, 0504, 0703, 0705, 1004, 1005

FEATURES:

- Current up to 3.8A
- Very Small Foot Print
- Flat-top for Pick & Place
- Increased Size Selection Guide

OPTIONS:

- Tape & Reel is Standard
- Bulk Packaging Available for Smaller Quantities
- Tolerance: 10% and 20% is Standard
- Custom Design Available

COMMON APPLICATIONS:

- Ideal for Palm-Top and Laptop DC-DC Converters
- PDA's Flash Memory
- Step-up, Step-down Converters

STANDARD SPECIFICATIONS

Part Number # - xxx	L (μH)	DCR (Ω) Max						IDC (A) Max					
		ASPI 0403-xxx	ASPI 0504-xxx	ASPI 0703-xxx	ASPI 0705-xxx	ASPI 1004-xxx	ASPI 1005-xxx	ASPI 0403-xxx	ASPI 0504-xxx	ASPI 0703-xxx	ASPI 0705-xxx	ASPI 1004-xxx	ASPI 1005-xxx
1R0	1.0	0.033						3.80					
1R4	1.4	0.038						3.30					
1R8	1.8	0.042						2.91					
2R2	2.2	0.047						2.60					
2R7	2.7	0.052						2.43					
3R3	3.3	0.058						2.15					
3R9	3.9	0.076						1.98					
4R7	4.7	0.094						1.70					
5R6	5.6	0.101						1.60					
6R8	6.8	0.117						1.41					
8R2	8.2	0.132						1.26					
100	10	0.182	0.10	0.08	0.07	0.05	0.06	1.15	1.44	1.44	2.30	2.38	2.60
120	12	0.235	0.12	0.09	0.08	0.06	0.07	1.05	1.40	1.39	2.00	2.13	2.45
150	15	0.338	0.14	0.10	0.09	0.07	0.08	0.92	1.30	1.24	1.80	1.87	2.27
180	18	0.378	0.15	0.11	0.10	0.08	0.09	0.84	1.23	1.12	1.60	0.73	2.15
220	22	0.522	0.18	0.13	0.11	0.09	0.10	0.76	1.11	1.07	1.50	1.60	1.95
270	27	0.540	0.20	0.15	0.12	0.10	0.11	0.71	0.97	0.94	1.30	1.44	1.76
330	33	0.587	0.23	0.17	0.13	0.12	0.12	0.64	0.88	0.85	1.20	1.26	1.50
390	39	0.844	0.32	0.22	0.16	0.15	0.14	0.59	0.80	0.74	1.10	1.20	1.37
470	47	0.937	0.37	0.25	0.18	0.17	0.17	0.54	0.72	0.68	1.10	1.10	1.28
560	56	1.117	0.42	0.28	0.24	0.20	0.19	0.50	0.68	0.64	0.94	1.01	1.17
680	68		0.46	0.33	0.28	0.22	0.22	0.46	0.61	0.59	0.85	0.91	1.11
820	82		0.60	0.41	0.37	0.25	0.25		0.58	0.54	0.78	0.85	1.00
101	100		0.70	0.48	0.43	0.34	0.35		0.52	0.51	0.72	0.74	0.97
121	120		0.93	0.54	0.47	0.40	0.40		0.48	0.49	0.66	0.69	0.89
151	150		1.10	0.75	0.64	0.54	0.47		0.40	0.40	0.58	0.61	0.78
181	180		1.38	1.02	0.71	0.62	0.63		0.38	0.36	0.51	0.56	0.72
221	220		1.57	1.20	0.96	0.72	0.73		0.35	0.31	0.49	0.53	0.66
271	270			1.31	1.11	0.95	0.97			0.29	0.42	0.45	0.57
331	330			1.50	1.26	1.10	1.15			0.28	0.40	0.42	0.52
391	390			1.77	1.24	1.30					0.36	0.38	0.48
471	470			1.96	1.53	1.48					0.34	0.35	0.42
561	560				1.90	1.90						0.32	0.33
681	680					2.25							0.28
821	820					2.55							0.24

FOR PHYSICAL CHARACTERISTICS, REFER TO PAGE 79

TECHNICAL INFORMATION:

Measuring Frequency (L) : 1.0~8.2μH (7.96MHz), 10~82μH (2.52MHz), 100~8ASPI

Inductance Tolerance :

ASPI-0403	1.0 ~ 27μH = ±20%	33 ~ 68μH = ±10%
ASPI-0504	10 ~ 27μH = ±20%	33 ~ 47μH = ±15%
ASPI-0703	10 ~ 47μH = ±20%	56 ~ 330μH = ±10%
ASPI-0705	10 ~ 47μH = ±20%	56 ~ 470μH = ±10%
ASPI-1004	10 ~ 47μH = ±20%	56 ~ 560μH = ±10%
ASPI-1005	10 ~ 39μH = ±20%	47 ~ 820μH = ±10%

Coils per Reel:

1500
1500
1000
500
1000
500

Note: All specification subject to change without noticed.

SURFACE-MOUNT POWER INDUCTORS

ASPI SERIES

0403, 0504, 0703, 0705, 1004, 1005



FEATURES:

- Current up to 3.8A
- Very Small Foot Print
- Flat-top for Pick & Place
- Increased Size Selection Guide

OPTIONS:

- Tape & Reel is Standard
- Bulk Packaging Available for Smaller Quantities
- Tolerance: 10% and 20% is Standard
- Custom Design Available

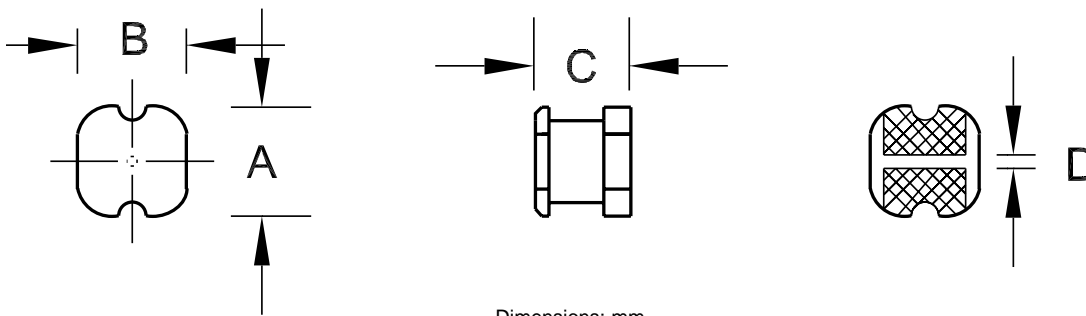
COMMON APPLICATIONS:

- Ideal for Palm-Top and Laptop DC-DC Converters
- PDA's Flash Memory
- Step-up, Step-down Converters

STANDARD SPECIFICATIONS				
Part Number	A	B	C	D
ASPI Series				
ASPI-0403	4.5±0.3	4.0±0.3	3.2±0.3	1.2
ASPI-0504	5.8±0.3	5.2±0.3	4.5±0.4	1.3
ASPI-0703	7.8±0.3	7.0±0.3	3.5±0.5	2.1
ASPI-0705	7.8±0.3	7.0±0.3	5.0±0.5	2.1
ASPI-1004	10.0±0.3	9.0±0.3	4.25±0.5	2.1
ASPI-1005	10.0±0.4	9.0±0.4	5.4±0.4	2.1

Note: All specifications subject to change without notice.

PHYSICAL CHARACTERISTICS



FOR STANDARD ELECTRICAL SPECIFICATIONS, REFER TO PAGE 78



29 Journey • Aliso Viejo, CA 92656 • USA
 (949) 448-7070 • FAX: (949) 448-8484
 E-MAIL: abinfo@abracon.com • INTERNET ADDRESS: www.abracon.com

