

## FEATURES AND SPECIFICATIONS

### Features and Benefits

- Sizes 2 to 10 circuits
- Locking windows provide secure mating

### Reference Information

Packaging: Tray

Mates With: 51004

Designed In: Millimeters

### Electrical

Voltage: 125V

Current:

AWG	24	26	28	30-34
Amperes	2.0	1.5	1.0	0.5

Contact Resistance: 20mΩ max.

Dielectric Withstanding Voltage: 500V AC/1 min.

Insulation Resistance: 1000 MΩ min.

### Physical

Housing: Glass-filled 6/6 nylon, UL 94V-0

Contact: Phosphor Bronze

Plating: Tin

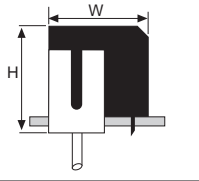
Operating Temperature: -20 to +85°C

Mated Height: 7.40mm (.291")

Mated Width: 10.00mm (.394")

### Mating Dimensions

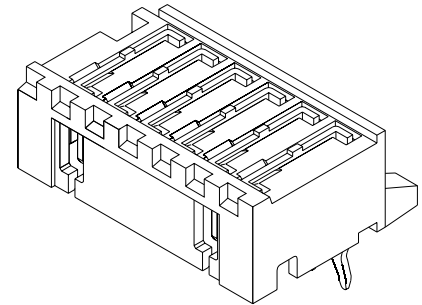
53025 • 51004 • 50011  
H=7.4mm W=10.0mm



# 2.00mm (.079") Pitch Wire-to-Board Header

## 53025

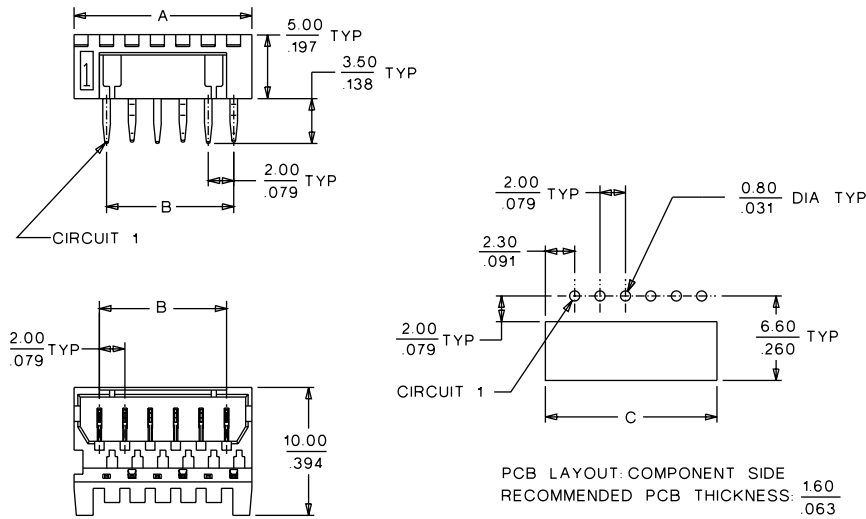
## Bottom Entry



B

2.00 to 2.50mm (.079 to .098") Pitch

## CATALOG DRAWING (FOR REFERENCE ONLY)



## ORDERING INFORMATION AND DIMENSIONS

Circuits	Order No.	Dimension		
		A	B	C
2	53025-0210	6.00 (.236)	2.00 (.079)	5.50 (.216)
3	53025-0310	8.00 (.315)	4.00 (.157)	7.50 (.295)
4	53025-0410	10.00 (.394)	6.00 (.236)	9.50 (.374)
5	53025-0510	12.00 (.472)	8.00 (.314)	11.50 (.452)
6	53025-0610	14.00 (.551)	10.00 (.393)	13.50 (.531)
7	53025-0710	16.00 (.630)	12.00 (.472)	15.50 (.610)
8	53025-0810	18.00 (.709)	14.00 (.551)	17.50 (.688)
9	53025-0910	20.00 (.787)	16.00 (.629)	19.50 (.767)
10	53025-1010	22.00 (.866)	18.00 (.708)	21.50 (.846)