

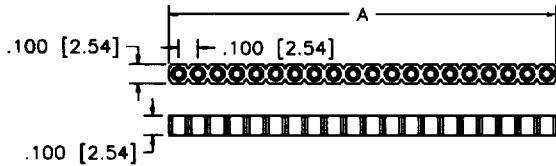
# SERIES 301 SIP SOCKET (SNAP)

# 302 SIP SOCKET (SOLID)

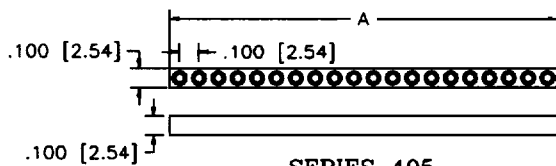
# 405 SIP SOCKET (LAMINATE WAFER)

# 411 SIP SOCKET (POLYIMIDE WAFER)

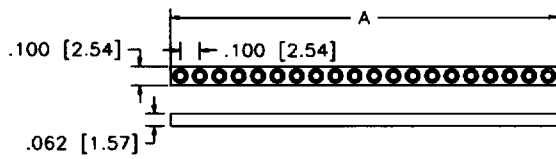
## SERIES 301 SNAP BREAKABLE INSULATOR



## SERIES 302 SOLID INSULATOR



## SERIES 405 LAMINATE INSULATOR



## SERIES 411 POLYIMIDE INSULATOR

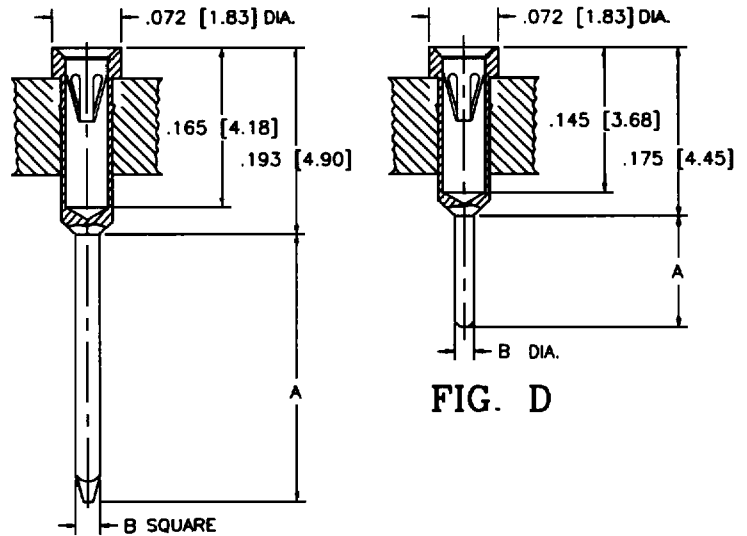
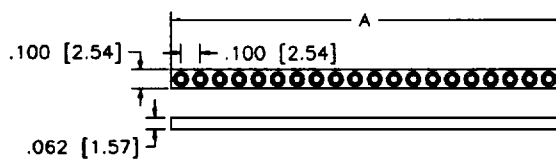


FIG. C

FIG. D

TERMINAL CHART			
TERMINAL	FIG.	DIM "A"	DIM "E"
-01	D	.115 [2.92]	.020 [0.51]
-02	C	.370 [9.40]	.025 [0.64]
-03	C	.510 [12.95]	.025 [0.64]
-08	D	.170 [4.31]	.020 [0.51]
-09	D	.280 [7.11]	.020 [0.51]
-11	D	.135 [3.43]	.020 [0.51]
-94	D	.125 [3.17]	.018 [0.46]

PIN	DIM "A"	
2	.200 [5.08]	002
3	.300 [7.62]	003
4	.400 [10.16]	004
5	.500 [12.70]	005
6	.600 [15.24]	006
7	.700 [17.78]	007
8	.800 [20.32]	008
9	.900 [22.86]	009
10	1.000 [25.40]	010
11	1.100 [27.94]	011
12	1.200 [30.48]	012
13	1.300 [33.02]	013
14	1.400 [35.56]	014
15	1.500 [38.10]	015
16	1.600 [40.64]	016

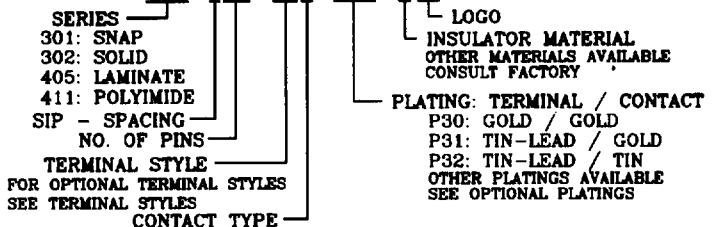
PIN	DIM "A"	
17	1.700 [43.18]	017
18	1.800 [45.72]	018
19	1.900 [48.26]	019
20	2.000 [50.80]	020
21	2.100 [53.34]	021
22	2.200 [55.88]	022
23	2.300 [58.42]	023
24	2.400 [60.96]	024
25	2.500 [63.50]	025
26	2.600 [66.04]	026
27	2.700 [68.58]	027
28	2.800 [71.12]	028
29	2.900 [73.66]	029
30	3.000 [76.20]	030
31	3.100 [78.74]	031
32	3.200 [81.28]	032

### CONTACT TYPE

<b>S: STANDARD DIP</b>	INSERTION FORCE	9.0 oz. AVG.
	WITHDRAWAL FORCE	2.0 oz. MIN.
<b>M: STANDARD PGA</b>	INSERTION FORCE	1.6 oz. MAX.
	WITHDRAWAL FORCE	0.5 oz. MIN.
<b>L: INTERSTITIAL PGA</b>	INSERTION FORCE	1.0 oz. MAX.
	WITHDRAWAL FORCE	0.3 oz. MIN.
<b>H: HIGH FORCE</b>	INSERTION FORCE	18.3 oz. MAX.
	WITHDRAWAL FORCE	4.2 oz. MIN.

### ORDERING INFORMATION

301-0XX-XXX-PXX-B10  
 302-0XX-XXX-PXX-B10  
 405-0XX-XXX-PXX-N10  
 411-0XX-XXX-PXX-H10



### TECHNICAL SPECIFICATIONS

**MATERIAL INSULATOR** GLASS FILLED POLYESTER  
 UL 94V-0 LISTED

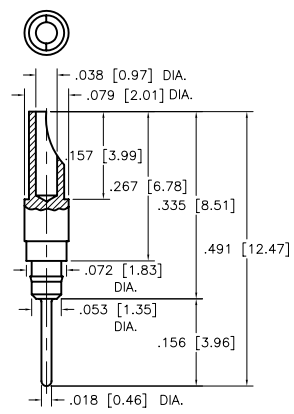
**TERMINAL CONTACT** BRASS PER ASTM-B16  
 BeCu PER ASTM-B194

### CONTACT FORCES

INSERTION STANDARD 9 oz. AVG.  
 WITHDRAWAL STANDARD 2 oz. MIN.

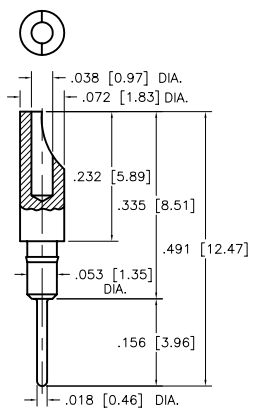


# TERMINAL STYLES

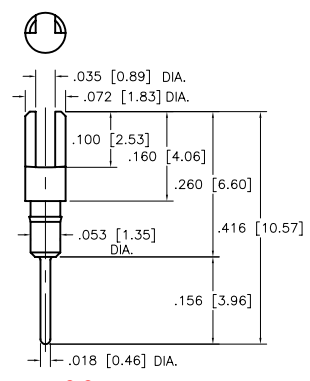


-36

OPEN FRAME AND LAMINATE APPLICATIONS

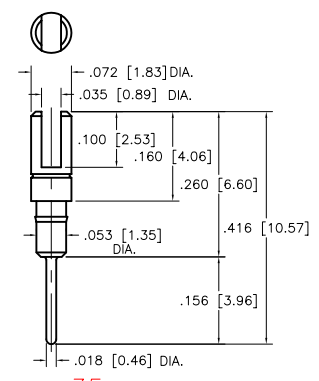


-05



-06

PHOSPHOR BRONZE



-35

## TECHNICAL SPECIFICATIONS

### MATERIAL

TERMINAL • BRASS PER ASTM-B16  
CONTACT • BeCu PER ASTM-B194

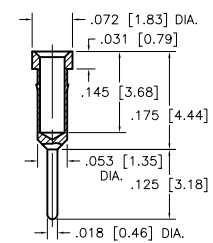
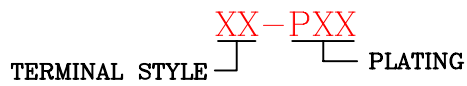
### MECHANICAL DATA

SOLDERABILITY EXCEED MIL-STD-202 METHOD 208

## PLATING CHART

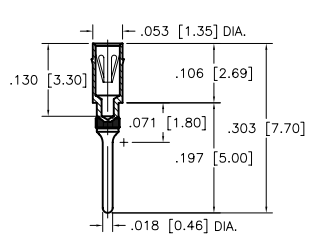
-T	TIN
-TL	TIN-LEAD
-G04	GOLD 4 μ INCHES
-G10	GOLD 10 μ INCHES
-G15	GOLD 15 μ INCHES

## ORDERING INFORMATION

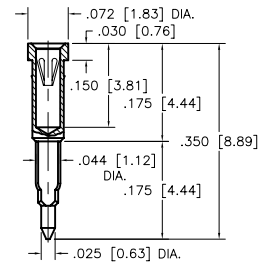


-07

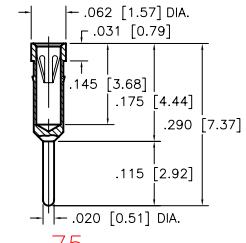
HOLLOW PHOSPHOR BRONZE



-128  
TRANSPUTER

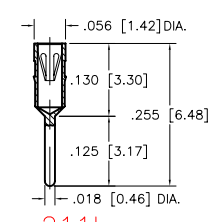


-477  
PRESS-FIT



-75

.070 [1.78] SPACING



-211L

INTERSTITIAL APPLICATIONS

## TECHNICAL SPECIFICATIONS

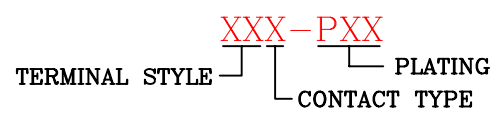
### MATERIAL

TERMINAL • BRASS PER ASTM-B16  
CONTACT • BeCu PER ASTM-B194

### MECHANICAL DATA

SOLDERABILITY EXCEED MIL-STD-202 METHOD 208

## ORDERING INFORMATION



## PLATING CHART

-P29	TERMINAL CONTACT	TIN-LEAD GOLD 10 μ INCHES
-P30	TERMINAL CONTACT	GOLD 4 μ INCHES
-P31	TERMINAL CONTACT	TIN-LEAD GOLD 4 μ INCHES
-P32	TERMINAL CONTACT	TIN-LEAD TIN

## CONTACT TYPE

S: STANDARD DIP	INSERTION FORCE	9.0 oz. AVG.
	WITHDRAWAL FORCE	2.0 oz. MIN.
M: STANDARD PGA	INSERTION FORCE	1.6 oz. MAX.
	WITHDRAWAL FORCE	0.5 oz. MIN.
L: INTERSTITIAL PGA	INSERTION FORCE	1.0 oz. MAX.
	WITHDRAWAL FORCE	0.3 oz. MIN.
H: HIGH FORCE	INSERTION FORCE	18.3 oz. MAX.
	WITHDRAWAL FORCE	4.2 oz. MIN.