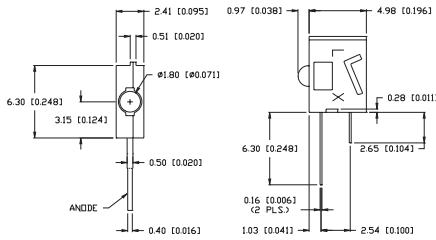


# LED Indicators ~ PCB ~ Dome Lens



## SSF-LXH555XX Series

## T-2mm Single, Right Angle Indicator



### FEATURES / OPTIONS

- ▶ State-of-the-Art High Brightness LED Chip Technology
- ▶ Small Size - Less Than 2.54mm Wide
- ▶ Side-by-Side Stackable
- ▶ Low Current Power Requirement
- ▶ Choice of Colors
- ▶ Available With Transparent Lens
- ▶ Low Current Style 1-2mA (If)
- ▶ With Internal Resistor for 5V and 12V Operation
- ▶ Color Combinations

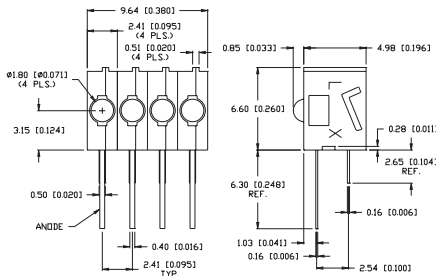
### APPLICATIONS / USES

- ▶ Board Level Status Indicators
- ▶ Board Level Fault Indicators
- ▶ Warning/Alarm Lights
- ▶ Circuit Fault/Status Indicators
- ▶ Backlighting Overlays

Lumex Part Number	Die Material	Emitted Color	Peak (nm)	Lens	Operating Current (mA)	Operating TYP. Vf (V)	Brightness TYP. Mcd	@ mA	View Angle° 2θ	Component LED Used
<b>HIGH BRIGHTNESS</b>										
SSF-LXH555SID	AllnGaP	Super High Intensity Red	636	Red Diffused	5-25	2	100	20	60	SSL-LXA227SID
SSF-LXH555SOD	AllnGaP	Super Orange	610	Orange Diffused	5-25	2	600	20	60	SSL-LXA227SOD
SSF-LXH555UGD	AllnGaP	Super Ultra Green	574	Green Diffused	5-25	2.2	200	20	60	SSL-LXA227SUGD
SSF-LXH555SYD	AllnGaP	Super Yellow	590	Yellow Diffused	5-25	2	300	20	60	SSL-LXA227SYD
SSF-LXH555USB	InGaN/SiC	Ultra Super Blue	470	Blue Diffused	5-25	3.5	100	20	60	SSL-LXA227USB

## SSF-LXH555XX-4 Series

## T-2mm Quad, Right Angle Indicator



### FEATURES / OPTIONS

- ▶ State-of-the-Art High Brightness LED Chip Technology
- ▶ Small Size - Less Than 2.54mm Wide
- ▶ Side-by-Side Stackable
- ▶ Low Current Power Requirement
- ▶ Choice of Colors
- ▶ Available With Transparent Lens
- ▶ Low Current Style 1-2mA (If)
- ▶ With Internal Resistor for 5V and 12V Operation
- ▶ Color Combinations

### APPLICATIONS / USES

- ▶ Board Level Status Indicators
- ▶ Board Level Fault Indicators
- ▶ Warning/Alarm Lights
- ▶ Circuit Fault/Status Indicators
- ▶ Backlighting Overlays

Lumex Part Number	Die Material	Emitted Color	Peak (nm)	Lens	Operating Current (mA)	Operating TYP. Vf (V)	Brightness TYP. Mcd	@ mA	View Angle° 2θ	Component LED Used
<b>HIGH BRIGHTNESS</b>										
SSF-LXH555SID-4	AllnGaP	Super High Intensity Red	636	Red Diffused	5-25	2	100	20	60	SSL-LXA227SID
SSF-LXH555SOD-4	AllnGaP	Super Orange	610	Orange Diffused	5-25	2	600	20	60	SSL-LXA227SOD
SSF-LXH555UGD-4	AllnGaP	Super Ultra Green	574	Green Diffused	5-25	2.2	200	20	60	SSL-LXA227SUGD
SSF-LXH555SYD-4	AllnGaP	Super Yellow	590	Yellow Diffused	5-25	2	300	20	60	SSL-LXA227SYD
SSF-LXH555USB-4	InGaN/SiC	Ultra Super Blue	470	Blue Diffused	5-25	3.5	100	20	60	SSL-LXA227USB



USA/Canada +1-800-278-5666  
Europe +49-6081-964380  
Asia +886-3-5821124



[www.lumex.com](http://www.lumex.com)



USA/Canada +1-847-359-8904  
Europe +49-6081-964381  
Asia +886-3-5821154