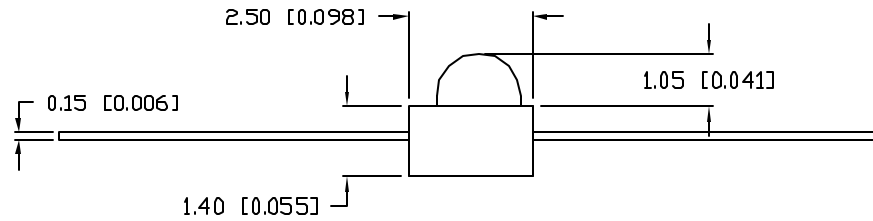
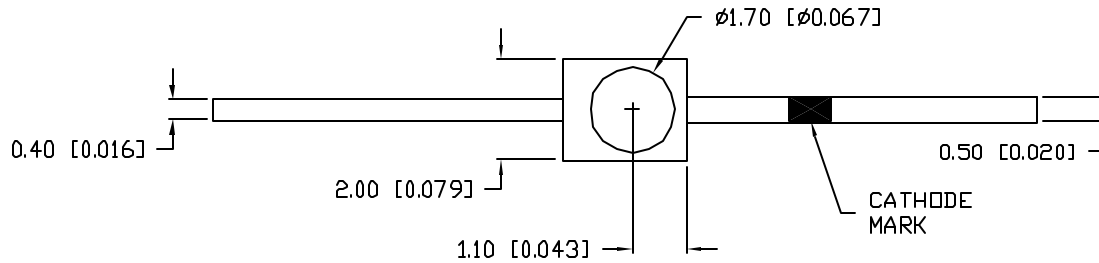


UNCONTROLLED DOCUMENT

PART NUMBER
OED-SPA224C40

REV.
A

REV.	E.C.N. NUMBER AND REVISION COMMENTS	DATE
A	E.C.N. #10BRDR. & REDRAWN.	7.20.01



ANODE CATHODE

ELECTRO-OPTICAL CHARACTERISTICS $T_A=25^\circ\text{C}$

PARAMETER	SYMBOL	TEST CONDITION	MIN	TYP	MAX	UNIT
OPEN CIRCUIT VOLTAGE	V_{oc}	$E_e=0.5\text{mw/cm}^2$		0.35		V
SHORT CIRCUIT CURRENT	I_{sc}	$E_e=0.5\text{mw/cm}^2$		12		μA
DARK CURRENT	I_d	$V_r=10\text{V}$			30	nA
		$E_e=0.5\text{mw/cm}^2$				
TERMINAL CAPACITANCE	C_t	$V_r=3\text{V}, F=1\text{MHz}$		5		pF
RESPONSE TIME	T_r/T_f	$V_r=10\text{V}, R_l=1000\ \Omega$		6/6		nS
SPECTRAL SENSITIVITY	λ			500~1000		nm
PEAK WAVELENGTH	λ_p			900		nm
HALF ANGLE	$\Delta\theta$			± 20		DEG
LENS COLOR:				CLEAR		

LIMITS OF SAFE OPERATION AT 25°C

PARAMETER	MAX	UNITS
REVERSE VOLTAGE	5	V
POWER DISSIPATION	105	mW
OPERATING, STORAGE TEMP.	-40 TO +85	$^\circ\text{C}$
SOLDERING TEMP.	+260	$^\circ\text{C}$
	2.0mm FROM BODY	3 SEC. MAX

*UNLESS OTHERWISE SPECIFIED TOLERANCES PER DECIMAL PRECISION ARE: X=±1 (±0.038), X.X=±0.5 (±0.020), X.XX=±0.25 (±0.010), X.XXX=±0.127 (±0.005). LEAD SIZE=±0.05 (±0.002), LEAD LENGTH=±0.75 (±0.030). MIN= ^{+DECIMAL PRECISION} -0.00 _{-DECIMAL PRECISION} MAX= ^{+0.00} -DECIMAL PRECISION

UNCONTROLLED DOCUMENT

REV.
A

PART NUMBER
OED-SPA224C40

CONFIDENTIAL INFORMATION
THE INFORMATION CONTAINED IN THIS DOCUMENT IS THE PROPERTY OF LUMEX INC. EXCEPT AS SPECIFICALLY AUTHORIZED IN WRITING BY LUMEX INC, THE HOLDER OF THIS DOCUMENT SHALL KEEP ALL INFORMATION CONTAINED HEREIN CONFIDENTIAL AND SHALL PROTECT SAME IN WHOLE OR IN PART FROM DISCLOSURE AND DISSEMINATION TO ALL THIRD PARTIES.



290 E. HELEN ROAD
PALATINE, IL 60067-6976
PHONE: +1.847.359.2790
US WEB: www.lumex.com
TW WEB: www.lumex.com.tw

T-1.7mm AXIAL LEADED PHOTODIODE.

RELIABILITY NOTE
OUR MANY YEARS OF EXPERIENCE DATA ACCUMULATION INDICATE THAT SOLDER HEAT IS A MAJOR CAUSE OF EARLY AND FUTURE FAILURE. PLEASE PAY ATTENTION TO YOUR SOLDERING PROCESS.

DRAWN BY: GT	CHECKED BY:	APPROVED BY:	DATE: 12.18.97
			PAGE: 1 OF 1
			SCALE: N/A