



**THIS PRODUCT MANUFACTURED
WITH LEAD-FREE PROCESSING**

**DESIGNED & DIMENSIONED
IN MILLIMETERS[INCHES]**

HPSTP-XX-XXXX-XX-XX

No OF POSITIONS

- 19: (5 SIG PAIRS/4 POWER LINES)
USES HDMIP-19 (SEE FIG. 1)
- 29: (8 SIG PAIRS/6 POWER LINES)
USES HDMIP-29 (SEE FIG. 2)

LENGTH *
(IN MILLIMETERS)

- 0500 - 9999
- *CONTACT SAMTEC FOR CUSTOM LENGTHS.
- 1000, 2000, 3000, AND 5000 IN STOCK
- LENGTHS LONGER THAN 5000 NOT SUPPORTED BY TEST DATA

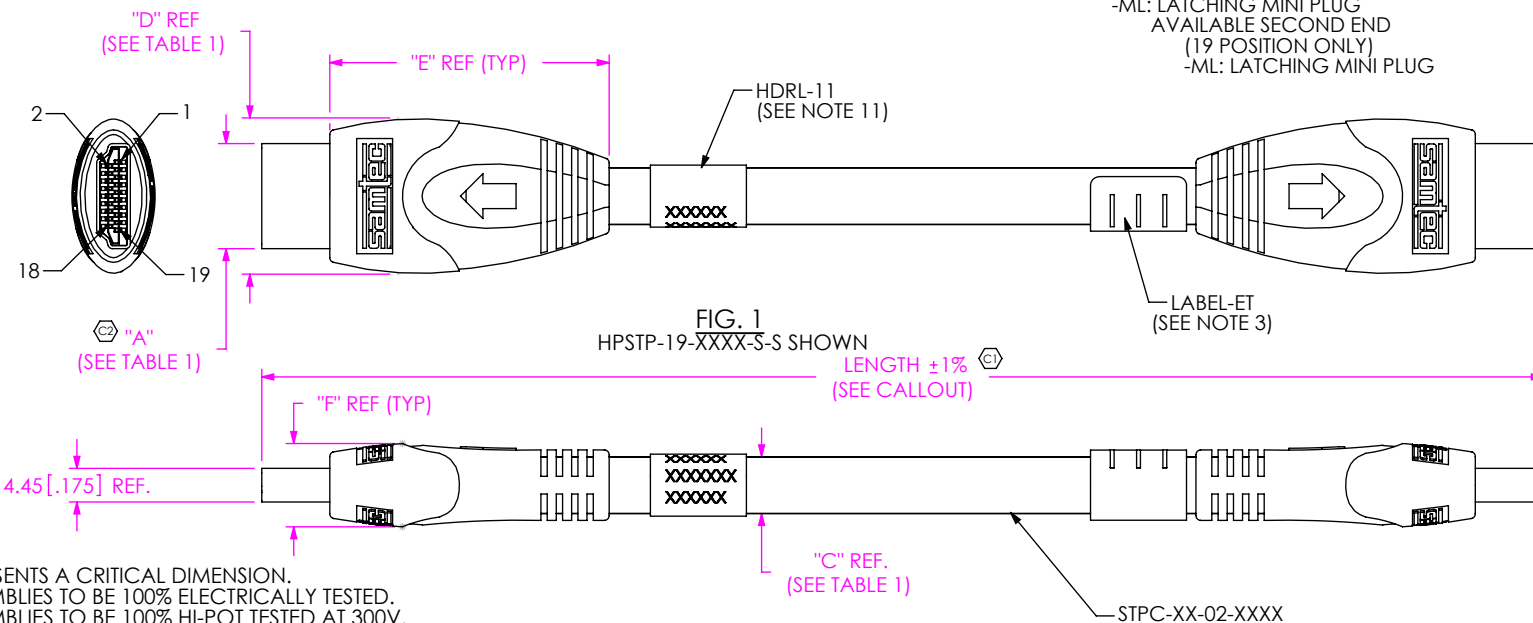
** = NOT RELEASED FOR PRODUCTION

FIRST END

- S: STANDARD PLUG
AVAILABLE SECOND END:
(19 AND 29 POSITION)
-STANDARD PLUG
- M: MINI PLUG
AVAILABLE SECOND END:
(19 POSITION ONLY)
-M: MINI PLUG
- ** -S: STANDARD PLUG
AVAILABLE SECOND END:
(19 POSITION ONLY)
-SL: LOCKING STANDARD PLUG
AVAILABLE SECOND END:
(19 POSITION ONLY)
-SL: LOCKING SECOND PLUG
- ML: LATCHING MINI PLUG
AVAILABLE SECOND END
(19 POSITION ONLY)
-ML: LATCHING MINI PLUG

SECOND END

- S: STANDARD PLUG
AVAILABLE FIRST END:
(19 AND 29 POSITION)
-S: STANDARD PLUG
- ** -M: MINI PLUG
AVAILABLE FIRST END:
(19 POSITION ONLY)
-M: MINI PLUG
- SL: LOCKING STANDARD PLUG
AVAILABLE FIRST END:
(19 POSITION ONLY)
-SL: LOCKING SECOND PLUG
- ML: LATCHING MINI PLUG
AVAILABLE FIRST END
(19 POSITION ONLY)
-ML: LATCHING MINI PLUG



NOTES:

1. Ⓢ REPRESENTS A CRITICAL DIMENSION.
2. ALL ASSEMBLIES TO BE 100% ELECTRICALLY TESTED.
3. ALL ASSEMBLIES TO BE 100% HI-POT TESTED AT 300V.
AFTER FINAL ELECTRICAL TEST, LABEL EACH ASSEMBLY WITH 1 LABEL-ET.
4. WRAP ENDS IN BUBBLE WRAP AND PACKAGE IN CLEAR POLY BAGS.
5. SEE TABLE 2, 3, 4, & 5 FOR SIGNAL/GROUND/POWER CONFIGURATION.
6. CONNECTOR SHIELD TIED TO BRAIDED CABLE SHIELD.
7. GOLD SHALL BE .000030" MIN GOLD PER MIL-G-45204B, CLASS 1, TO BE MEASURED IN CONTACT AREA.
8. NICKEL SHALL BE .000080" MIN PER QQ-N-290, CLASS 1, MEASURED ON SHELL.
9. NOTE DELETED.
10. NOTE DELETED.
11. HDRL-11 IS TO BE CENTERED ON CABLE AS SHOWN.
HDRL-11 IS TO CONTAIN: PART NUMBER, SHOP ORDER,
& DATE CODE.

TABLE 1

POSITIONS	"A"	"C"	"D"	"E"	"F"	CABLE	SUB ASSEMBLY
-19	13.90 [0.547]	7.50 [0.295]	20.51 [0.807]	37.20 [1.465]	11.10 [0.437]	STPC-05-02	SUB-HDMIP-19-01
-19-L	13.90 [0.547]	7.50 [0.295]	20.00 [0.787]	40.56 [1.597]	9.80 [0.386]	STPC-05-02	SUB-HDMIP-19-01-L
-29	21.20 [0.835]	8.50 [0.335]	27.20 [1.071]	45.00 [1.772]	13.00 [0.512]	STPC-08-02	SUB-HDMIP-29-01

UNLESS OTHERWISE SPECIFIED,
DIMENSIONS ARE IN MILLIMETERS.

TOLERANCES ARE:

DECIMALS	ANGLES
.X: ±.3 [.01]	2°
.XX: ±.13 [.005]	
.XXX: ±.051 [.002]	

PROPRIETARY NOTE

THIS DOCUMENT CONTAINS INFORMATION
CONFIDENTIAL AND PROPRIETARY TO
SAMTEC, INC. AND SHALL NOT BE REPRODUCED
OR TRANSFERRED TO OTHER DOCUMENTS OR
DISCLOSED TO OTHERS OR USED FOR ANY
PURPOSE OTHER THAN THAT WHICH IT WAS
OBTAINED WITHOUT THE EXPRESSED WRITTEN
CONSENT OF SAMTEC, INC.

MATERIAL:

DO NOT SCALE DRAWING

SHEET SCALE: 1:1

OVERMOLD: PVC (UL94 V-0)
PREMOLD: PE (UL94 V-0)
CONNECTOR: LCP (UL94 V-0)
CABLE: (VW-1)

F:\DWG\MISC\MKTG\HPSTP-XX-XXXX-XX-XX-MKT.SLDDRW

samtec

520 PARK EAST BLVD, NEW ALBANY, IN 47150
PHONE: 812-944-6733 FAX: 812-948-5047
e-Mail: info@SAMTEC.com code: 55322

DESCRIPTION:

HDMI SHIELDED TWISTED PAIR CABLE ASSY

DWG. NO.

HPSTP-XX-XXXX-XX-XX

BY: John Riley 2/23/2006

SHEET 1 OF 7

REVISION Q

FIG. 2 HPSTP-29-XXXX-S-S SHOWN

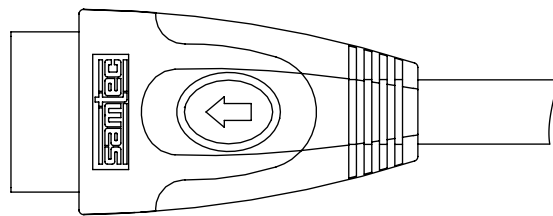
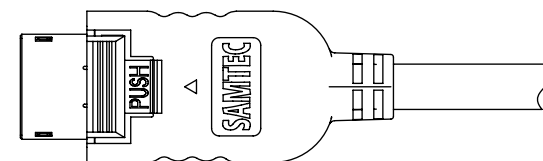


FIG. 3 HPSTP-19-XXXX-SL-SL SHOWN



PIN OUT MINI

1	TMDS DATA 2 SHIELD	1
2	TMDS DATA 2 +	2
3	TMDS DATA 2 -	3
4	TMDS DATA 1 SHIELD	4
5	TMDS DATA 1 +	5
6	TMDS DATA 1 -	6
7	TMDS DATA 0 SHIELD	7
8	TMDS DATA 0 +	8
9	TMDS DATA 0 -	9
10	TMDS CLOCK SHIELD	10
11	TMDS CLOCK +	11
12	TMDS CLOCK -	12
13	DDC/CEC/ GROUND	13
14	CEC	14
15	SCL	15
16	SDA	16
17	RESERVED	17
18	+5V POWER	18
19	HOT PLUG DETECT	19

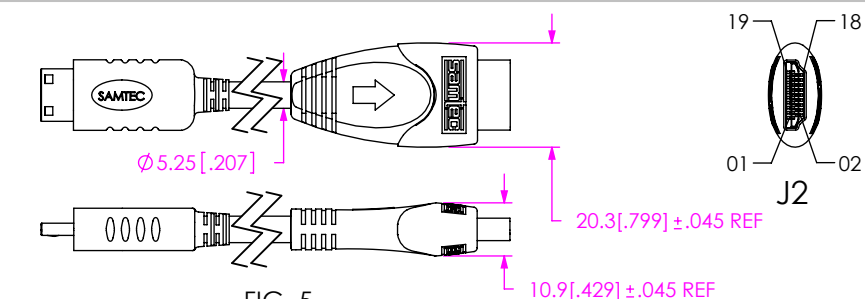
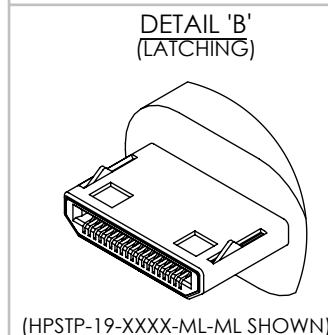
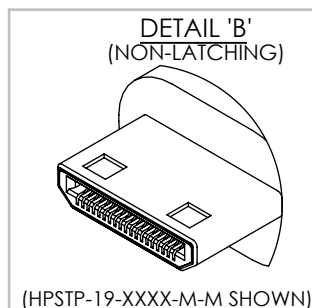
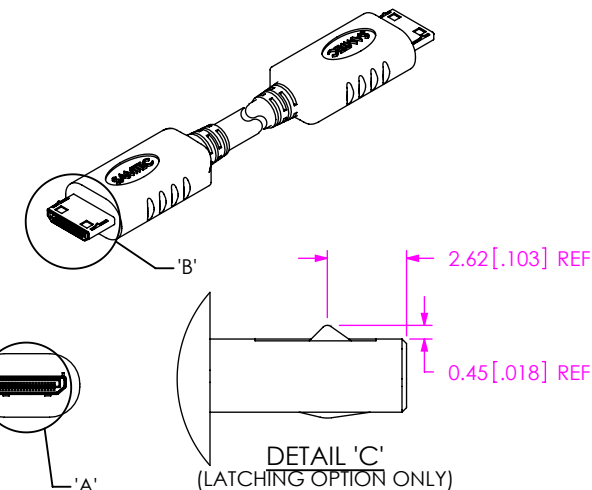
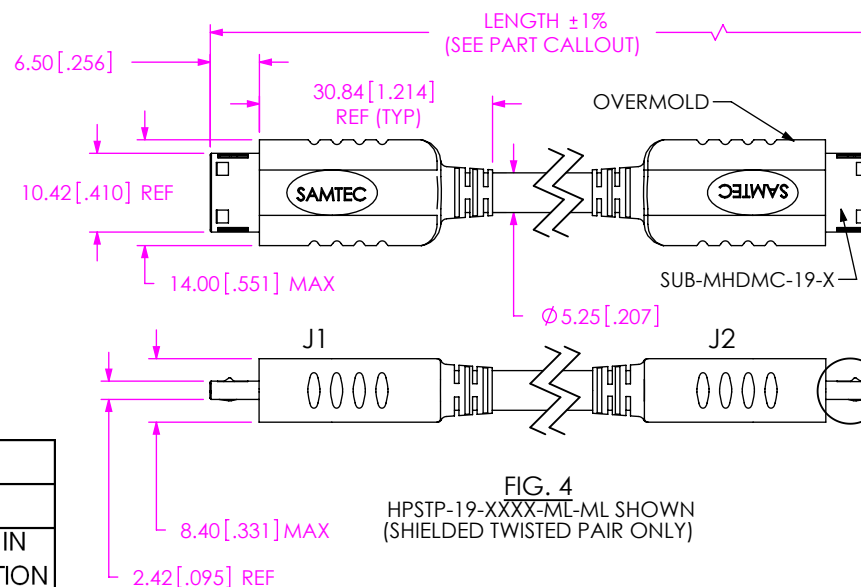


FIG. 5
HPSTP-19-XXXX-M-S SHOWN
(SAME AS FIG. 1 AND FIG. 4, DIFFERENT AS SHOWN)
(SHIELDED TWISTED PAIR ONLY)

THIS DOCUMENT CONTAINS INFORMATION
CONFIDENTIAL AND PROPRIETARY TO
SAMTEC, INC. AND SHALL NOT BE REPRODUCED
OR TRANSFERRED TO OTHER DOCUMENTS OR
DISCLOSED TO OTHERS OR USED FOR ANY
PURPOSE OTHER THAN THAT WHICH IT WAS
OBTAINED WITHOUT THE EXPRESSED WRITTEN
CONSENT OF SAMTEC, INC.

SHEET SCALE: 1:1

520 PARK EAST BLVD, NEW ALBANY, IN 47150
PHONE: 812-944-6733 FAX: 812-948-5047
e-Mail: info@SAMTEC.com code: 55322

DWG. NO. HPSTP-XX-XXXX-XX-XX

BY: John Riley 2/23/2006	SHEET 2 OF 7
--------------------------	--------------

-29 TABLE 3 S-S, SL-SL

PIN OUT

J1 PIN POSITION	WIRE LABEL	J2 PIN POSITION	
1	TMDS DATA 2 +	1	PAIR 1
2	TMDS DATA 2 SHIELD	2	
3	TMDS DATA 2 -	3	
4	TMDS DATA 1+	4	PAIR 2
5	TMDS DATA 1 SHIELD	5	
6	TMDS DATA 1 -	6	
7	TMDS DATA 0 +	7	PAIR 3
8	TMDS DATA 0 SHIELD	8	
9	TMDS DATA 0 -	9	
10	TMDS CLOCK +	10	PAIR 4
11	TMDS CLOCK SHIELD	11	
12	TMDS CLOCK -	12	
13	TMDS DATA 5+	13	PAIR 5
14	TMDS DATA 5 SHIELD	14	
15	TMDS DATA 5-	15	
16	TMDS DATA 4+	16	PAIR 6
17	TMDS DATA 4 SHIELD	17	
18	TMDS DATA 4-	18	
19	TMDS DATA 3+	19	PAIR 7
20	TMDS DATA 3 SHIELD	20	
21	TMDS DATA 3-	21	
22	CEC	22	P
23	RESERVED	23	P
24	RESERVED	24	P
25	SCL	25	PAIR 8
26	SDA	26	
27	DDC/CEC GROUND	27	
28	+ 5V POWER	28	P
29	HOT PLUG DETECT	29	P
SHELL	BRAIDED CABLE	SHELL	

-19 TABLE 4 S-S, SL-SL

PIN OUT

J1 PIN POSITION	WIRE LABEL	J2 PIN POSITION	
1	TMDS DATA 2 +	1	PAIR 1
2	TMDS DATA 2 SHIELD	2	
3	TMDS DATA 2 -	3	
4	TMDS DATA 1 +	4	PAIR 2
5	TMDS DATA 1 SHIELD	5	
6	TMDS DATA 1 -	6	
7	TMDS DATA 0 +	7	PAIR 3
8	TMDS DATA 0 SHIELD	8	
9	TMDS DATA 0 -	9	
10	TMDS CLOCK +	10	PAIR 4
11	TMDS CLOCK SHIELD	11	
12	TMDS CLOCK -	12	
13	CEC	13	P
14	RESERVED	14	P
15	SCL	15	PR 5
16	SDA	16	
17	DDC/CEC GROUND	17	
18	+5V POWER	18	P
19	HOT PLUG DETECT	19	P
SHELL	BRAIDED CABLE	SHELL	

-19 TABLE 5 M-S

PIN OUT

J1 PIN POSITION	WIRE LABEL	J2 PIN POSITION	
1	TMDS DATA 2 SHIELD	2	PAIR 1
2	TMDS DATA 2 +	1	
3	TMDS DATA 2 -	3	
4	TMDS DATA 1 SHIELD	5	PAIR 2
5	TMDS DATA 1 +	4	
6	TMDS DATA 1 -	6	
7	TMDS DATA 0 SHIELD	8	PAIR 3
8	TMDS DATA 0 +	7	
9	TMDS DATA 0 -	9	
10	TMDS CLOCK SHIELD	11	PAIR 4
11	TMDS CLOCK +	10	
12	TMDS CLOCK -	12	
13	DDC/CEC/ GROUND	17	P
14	CEC	13	P
15	SCL	15	PR 5
16	SDA	16	
17	RESERVED	14	
18	+5V POWER	18	P
19	HOT PLUG DETECT	19	P
SHELL	BRAIDED CABLE	SHELL	

PROPRIETARY NOTE

THIS DOCUMENT CONTAINS INFORMATION
CONFIDENTIAL AND PROPRIETARY TO
SAMTEC, INC. AND SHALL NOT BE REPRODUCED
OR TRANSFERRED TO OTHER DOCUMENTS OR
DISCLOSED TO OTHERS OR USED FOR ANY
PURPOSE OTHER THAN THAT WHICH IT WAS
OBTAINED WITHOUT THE EXPRESSED WRITTEN
CONSENT OF SAMTEC, INC.

DO NOT SCALE DRAWING

SHEET SCALE: 1:1



520 PARK EAST BLVD, NEW ALBANY, IN 47150
PHONE: 812-944-6733 FAX: 812-948-5047
e-Mail: info@SAMTEC.com code: 55322

DESCRIPTION:
HDMI SHIELDED TWISTED PAIR CABLE ASSY

DWG. NO. **HPSTP-XX-XXXX-XX-XX**

BY: John Riley 2/23/2006 SHEET 3 OF 7

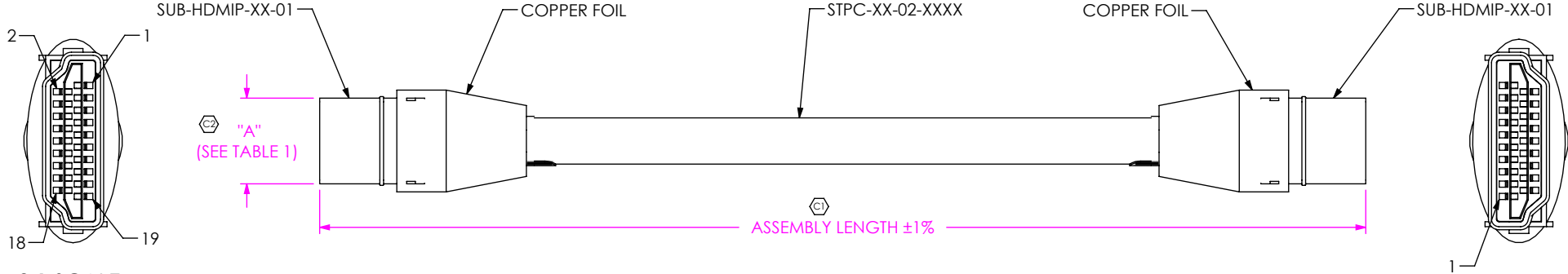


FIG 1. HPSTP-19-XXXX-01 SHOWN
(-S-S OPTION ONLY)

TABLE 2												
POSITIONS	"G"		"H"		"J"		"K"		"L"		"M"	
-19	16.71	[0.658]	11.50	[0.453]	13.00	[0.512]	21.20	[0.835]	7.70	[0.303]	1.53	[0.060]
-19-L	16.71	[0.658]	11.50	[0.453]	13.00	[0.512]	21.20	[0.835]	7.70	[0.303]	1.53	[0.060]
-29	23.40	[0.921]	15.80	[0.622]	20.00	[0.787]	27.50	[1.083]	9.25	[0.364]	2.15	[0.085]

PROPRIETARY NOTE
THIS DOCUMENT CONTAINS INFORMATION
CONFIDENTIAL AND PROPRIETARY TO
SAMTEC, INC. AND SHALL NOT BE REPRODUCED
OR TRANSFERRED TO OTHER DOCUMENTS OR
DISCLOSED TO OTHERS OR USED FOR ANY
PURPOSE OTHER THAN THAT WHICH IT WAS
OBTAINED WITHOUT THE EXPRESSED WRITTEN
CONSENT OF SAMTEC, INC.

DO NOT SCALE DRAWING

SHEET SCALE: 1:1

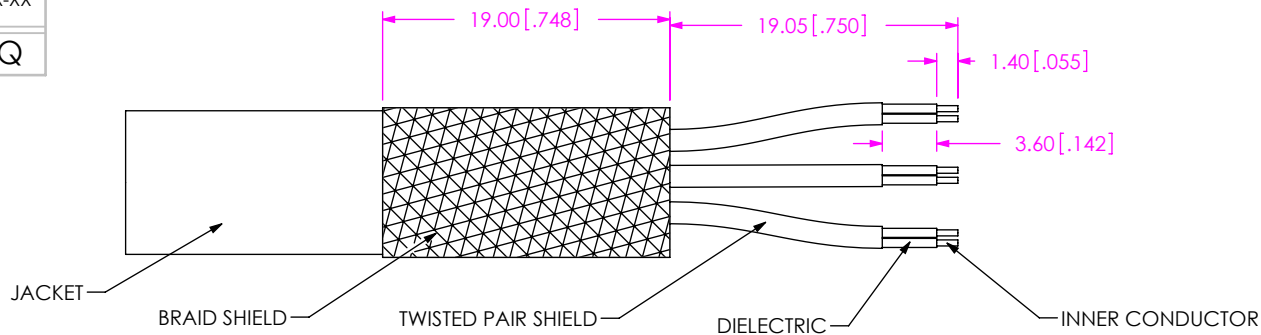
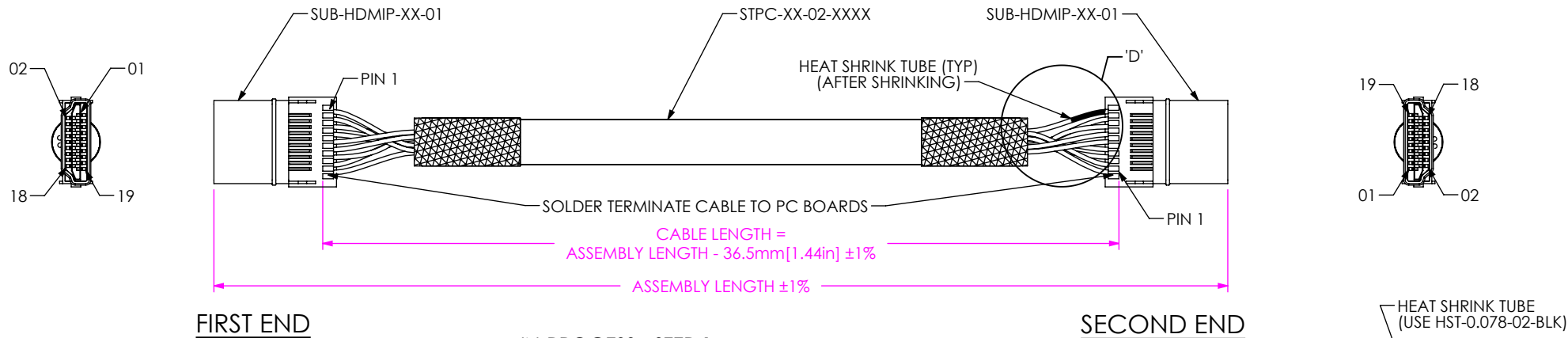


520 PARK EAST BLVD, NEW ALBANY, IN 47150
PHONE: 812-944-6733 FAX: 812-948-5047
e-Mail: info@SAMTEC.com code: 55322

DESCRIPTION:
HDMI SHIELDED TWISTED PAIR CABLE ASSY

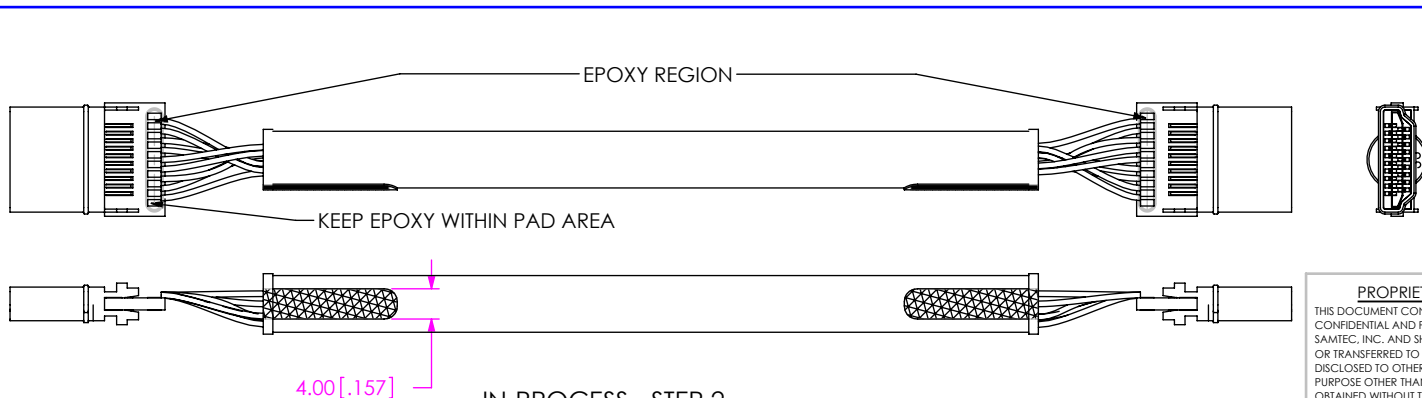
DWG. NO. HPSTP-XX-XXXX-XX-XX

BY: John Riley 2/23/2006 SHEET 4 OF 7

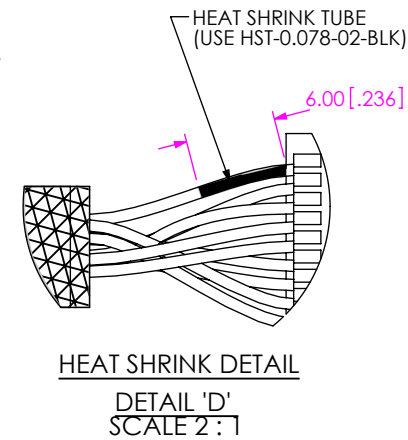
STRIP DIMSIN-PROCESS - STEP 1

(HPSTP-T9-XXXX-S-S SHOWN)

- A) SLIDE 6MM HEAT SHRINK TUBE OVER PAIRS AND CONDUCTORS
 B) SOLDER CABLE TO PCB
 C) PUSH H/S TUBE UP TO PCB AND ACTIVATE (SEE DETAIL)

IN-PROCESS - STEP 2
(HPSTP-T9-XXXX-S-S SHOWN)

- A) APPLY EPOXY
 B) TRIM BRAID TO 4MM WIDE TAILS ON THIS SIDE ONLY (DO NOT TRIM LENGTH)

PROPRIETARY NOTE

THIS DOCUMENT CONTAINS INFORMATION CONFIDENTIAL AND PROPRIETARY TO SAMTEC, INC. AND SHALL NOT BE REPRODUCED OR TRANSFERRED TO OTHER DOCUMENTS OR DISCLOSED TO OTHERS OR USED FOR ANY PURPOSE OTHER THAN THAT WHICH IT WAS OBTAINED WITHOUT THE EXPRESSED WRITTEN CONSENT OF SAMTEC, INC.

DO NOT SCALE DRAWING

SHEET SCALE: 1:2

samtec

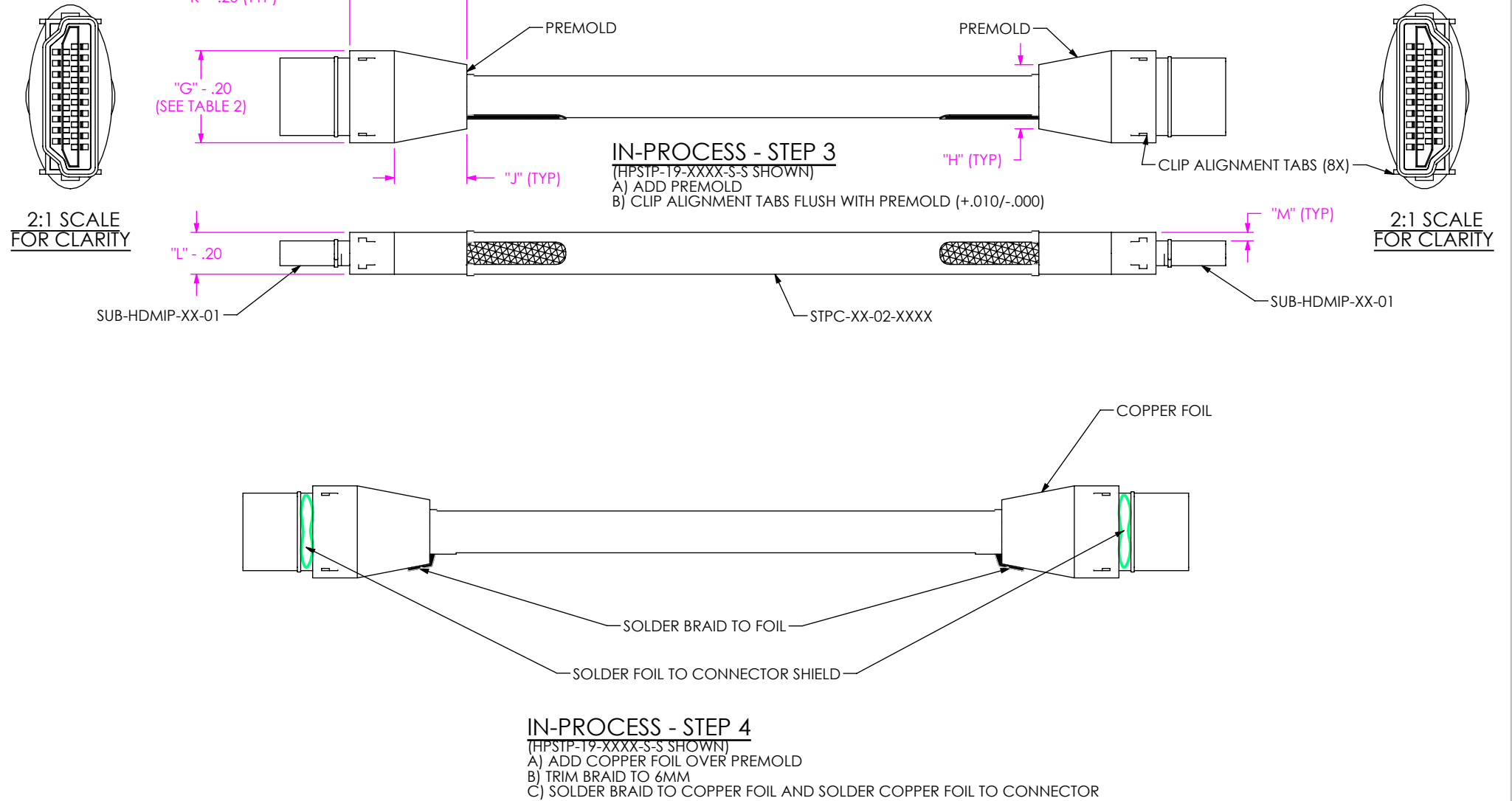
520 PARK EAST BLVD, NEW ALBANY, IN 47150
 PHONE: 812-944-6733 FAX: 812-948-5047
 e-Mail: info@SAMTEC.com code: 55322

DESCRIPTION:
HDMI SHIELDED TWISTED PAIR CABLE ASSY

DWG. NO.
HPSTP-XX-XXXX-XX-XX

BY: John Riley 11/7/07 SHEET 5 OF 7

REVISION Q



No OF POSITIONS	POSITIONS (S=SIGNAL, G=GROUND, P=POWER)																														
-19	PAIR 1			PAIR 2			PAIR 3			PAIR 4					PAIR 5																
	1	2	3	4	5	6	7	8	9	10	11	12	13	14	15	16	17	18	19												
	S	G	S	S	G	S	S	G	S	S	G	S	P	P	S	S	G	P	P												
-29	PAIR 1			PAIR 2			PAIR 3			PAIR 4			PAIR 5			PAIR 6			PAIR 7						PAIR 8						
	1	2	3	4	5	6	7	8	9	10	11	12	13	14	15	16	17	18	19	20	21	22	23	24	25	26	27	28	29		
	S	G	S	S	G	S	S	G	S	S	G	S	S	G	S	S	G	S	S	G	S	P	P	P	S	S	P	P	P		

PROPRIETARY NOTE
THIS DOCUMENT CONTAINS INFORMATION CONFIDENTIAL AND PROPRIETARY TO SAMTEC, INC. AND SHALL NOT BE REPRODUCED OR TRANSFERRED TO OTHER DOCUMENTS OR DISCLOSED TO OTHERS OR USED FOR ANY PURPOSE OTHER THAN THAT WHICH IT WAS OBTAINED WITHOUT THE EXPRESSED WRITTEN CONSENT OF SAMTEC, INC.

DO NOT SCALE DRAWING

SHEET SCALE: 1:2

samtec

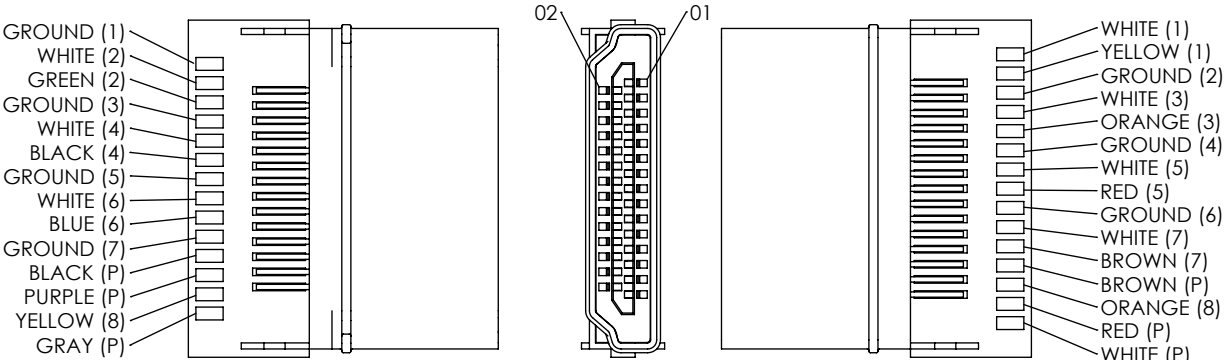
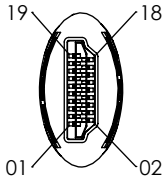
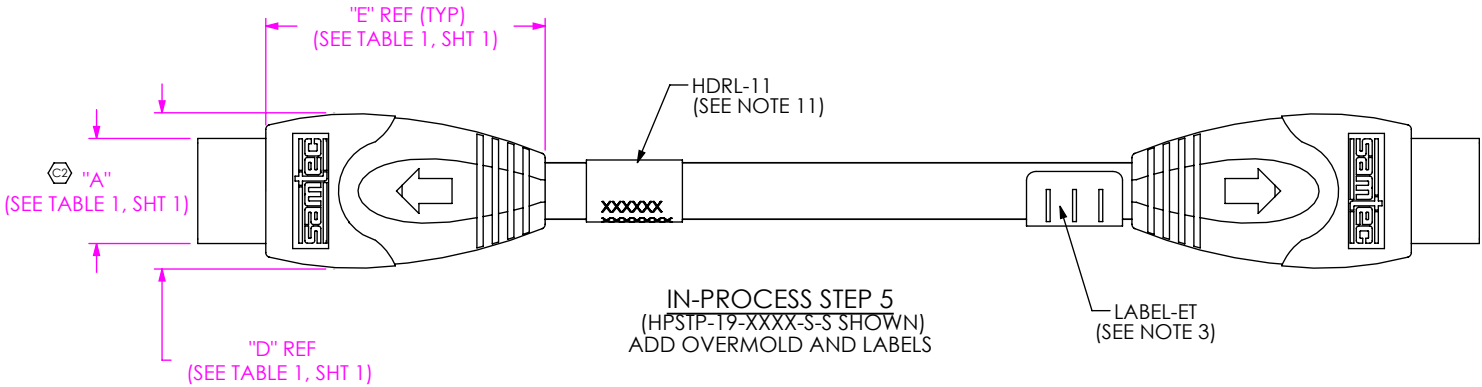
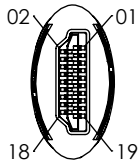
520 PARK EAST BLVD, NEW ALBANY, IN 47150
PHONE: 812-944-6733 FAX: 812-948-5047
e-Mail: info@SAMTEC.com code: 55322

DESCRIPTION:
HDMI SHIELDED TWISTED PAIR CABLE ASSY

DWG. NO.
HPSTP-XX-XXXX-XX-XX

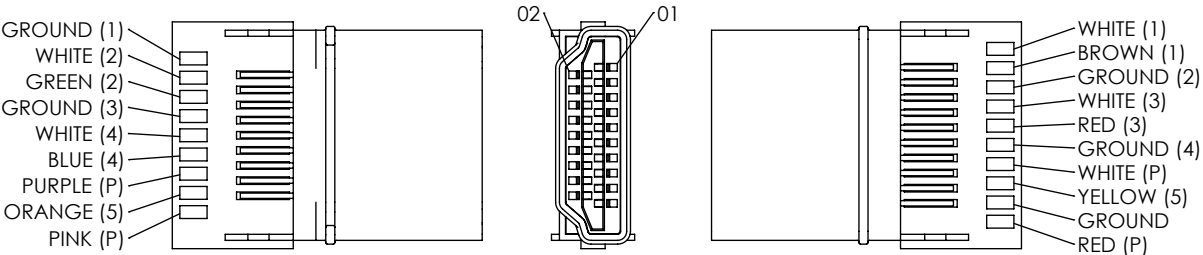
BY: John Riley 2/23/2006 SHEET 6 OF 7

REVISION Q



HPSTP-29-XXXX-S-S SHOWN

(P) = POWER
(X) = PAIR NUMBER



HPSTP-19-XXXX-S-S SHOWN

(P) = POWER
(X) = PAIR NUMBER

HPSTP-XX-XXXX-XX-XX BOM			
ITEM #	PART #	QTY	DESCRIPTION
IH ROUTING			
1	SUB-HPSTP-XX-XXXX-XX-X	1	SUB ASSEMBLY
2	OVERMOLD	2	RITE FLEX 640
3	CUT-1.000	2	CU TAPE
OC ROUTING			
4	SUB-HDMIP-XX-01	2	SUB ASSEMBLY
5	LABEL-ET	1	LABEL

PROPRIETARY NOTE
THIS DOCUMENT CONTAINS INFORMATION
CONFIDENTIAL AND PROPRIETARY TO
SAMTEC, INC. AND SHALL NOT BE REPRODUCED
OR TRANSFERRED TO OTHER DOCUMENTS OR
DISCLOSED TO OTHERS OR USED FOR ANY
PURPOSE OTHER THAN THAT WHICH IT WAS
OBTAINED WITHOUT THE EXPRESSED WRITTEN
CONSENT OF SAMTEC, INC.

DO NOT SCALE DRAWING

SHEET SCALE: 1:2

520 PARK EAST BLVD, NEW ALBANY, IN 47150
PHONE: 812-944-6733 FAX: 812-948-5047
e-Mail: info@SAMTEC.com code: 55322

DESCRIPTION:
CUSTOM HDR CABLE ASSEMBLY

DWG. NO.
HPSTP-XX-XXXX-XX-XX

BY: John Riley 2/23/2006 SHEET 7 OF 7