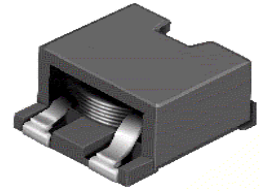
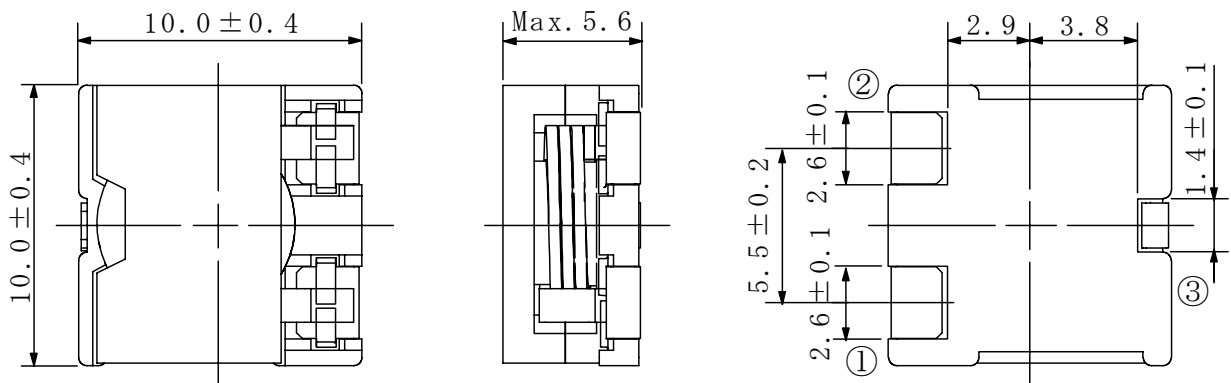
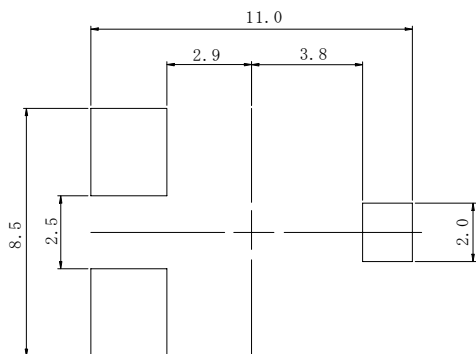
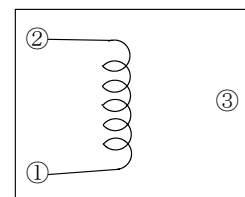


**Type: CDEP105**
**Product Description**

- 10.4 × 10.4mm Max.(L×W), 5.6mm Max. Height.
- Standard type, Low D.C.R Type and High Power Type are available.
- Inductance Range: 0.22~5.0 μ H (standard type );  
0.36~8.8 μ H (Low D.C.R type); 0.15~3.0 μ H (High Power type).
- Saturation Current range: 8.4~40.0 A (Standard type ) ;  
4.8~24.0A (Low D.C.R type); 12.6~55.0A (High Power type).
- Temperature rise current 4.9~19.0A
- In addition to the standards versions shown here, custom inductors are also available to meet your exact requirements.


**◆ Feature**

- Magnetically shielded construction.
- Super high current, Mn-Zn core used, Flat wire used.
- Ideally used in computer CPU power supply.
- RoHS Compliance.

**◆ Dimensions (mm)**

**◆ Land Pattern (mm)**

**◆ Schematics (Bottom)**


**Type: CDEP105**
**◆ Specification**
**1.Low D.C.R Type**

| Part Name<br>※     | Stamp | Inductance<br>(100kHz/1V) | D.C.R.<br>(mΩ)<br>Max.(Typ.)<br>(20°C) | Saturation Current<br>(A) ※1 |         | Temperature<br>Rise current<br>(A) ※2 |
|--------------------|-------|---------------------------|--|------------------------------|---------|---------------------------------------|
|                    |       |                           |  | (20°C)                       | (100°C) |                                       |
| CDEP105NP-0R3N□-88 | 0R3NL | 0.36 μ H±30%              | 1.7(1.4)                               | 24.0                         | 20.0    | 19.0                                  |
| CDEP105NP-0R8M□-88 | 0R8ML | 0.80 μ H±20%              | 2.4(2.0)                               | 16.0                         | 13.2    | 17.7                                  |
| CDEP105NP-1R4M□-88 | 1R4ML | 1.4 μ H±20%               | 4.1(3.4)                               | 12.0                         | 10.0    | 13.0                                  |
| CDEP105NP-2R2M□-88 | 2R2ML | 2.2 μ H±20%               | 5.3(4.4)                               | 9.6                          | 8.0     | 11.2                                  |
| CDEP105NP-3R2M□-88 | 3R2ML | 3.2 μ H±20%               | 7.5(6.2)                               | 7.8                          | 6.6     | 9.0                                   |
| CDEP105NP-4R3M□-88 | 4R3ML | 4.3 μ H±20%               | 10.5(8.7)                              | 6.8                          | 5.7     | 7.8                                   |
| CDEP105NP-5R7M□-88 | 5R7ML | 5.7 μ H±20%               | 12.4(10.3)                             | 5.8                          | 4.9     | 7.4                                   |
| CDEP105NP-7R2M□-88 | 7R2ML | 7.2 μ H±20%               | 18.0(15.0)                             | 5.3                          | 4.2     | 6.2                                   |
| CDEP105NP-8R8M□-88 | 8R8ML | 8.8 μ H±20%               | 23.8(19.8)                             | 4.8                          | 4.0     | 4.9                                   |

**2.Standard Type**

| Part Name<br>※     | Stamp | Inductance<br>(100kHz/1V) | D.C.R.<br>(mΩ)<br>Max.(Typ.)<br>(20°C) | Saturation Current<br>(A) ※1 |         | Temperature<br>Rise current<br>(A) ※2 |
|--------------------|-------|---------------------------|--|------------------------------|---------|---------------------------------------|
|                    |       |                           |  | (20°C)                       | (100°C) |                                       |
| CDEP105NP-0R2N□-50 | 0R2NS | 0.22 μ H±30%              | 1.7(1.4)                               | 40.0                         | 30.9    | 19.0                                  |
| CDEP105NP-0R4M□-50 | 0R4MS | 0.45 μ H±20%              | 2.4(2.0)                               | 26.4                         | 21.2    | 17.7                                  |
| CDEP105NP-0R8M□-50 | 0R8MS | 0.8 μ H±20%               | 4.1(3.4)                               | 20.8                         | 16.7    | 13.0                                  |
| CDEP105NP-1R3M□-50 | 1R3MS | 1.3 μ H±20%               | 5.3(4.4)                               | 16.8                         | 13.4    | 11.2                                  |
| CDEP105NP-1R8M□-50 | 1R8MS | 1.8 μ H±20%               | 7.5(6.2)                               | 13.8                         | 11.0    | 9.0                                   |
| CDEP105NP-2R5M□-50 | 2R5MS | 2.5 μ H±20%               | 10.5(8.7)                              | 11.8                         | 9.6     | 7.8                                   |
| CDEP105NP-3R2M□-50 | 3R2MS | 3.2 μ H±20%               | 12.4(10.3)                             | 10.5                         | 8.4     | 7.4                                   |
| CDEP105NP-4R0M□-50 | 4R0MS | 4.0 μ H±20%               | 18.0(15.0)                             | 9.3                          | 7.4     | 6.2                                   |
| CDEP105NP-5R0M□-50 | 5R0MS | 5.0 μ H±20%               | 23.8(19.8)                             | 8.4                          | 6.7     | 4.9                                   |

**Type: CDEP105**
**3.High Power Type**

| Part Name<br>※     | Stamp | Inductance<br>(100kHz/1V) | D.C.R.<br>(mΩ)<br>Max.(Typ.)<br>(20°C) | Saturation Current<br>(A) ※1 |         | Temperature<br>rise<br>current<br>(A) ※2 |
|--------------------|-------|---------------------------|--|------------------------------|---------|--|
|                    |       |                           |  | (20°C)                       | (100°C) |  |
| CDEP105NP-0R1N□-32 | 0R1NH | 0.15 μ H ± 30%            | 1.7(1.4)                               | 55.0                         | 46.0    | 19.0                                     |
| CDEP105NP-0R3N□-32 | 0R3NH | 0.3 μ H ± 30%             | 2.4(2.0)                               | 40.0                         | 33.0    | 17.7                                     |
| CDEP105NP-0R5M□-32 | 0R5MH | 0.5 μ H ± 20%             | 4.1(3.4)                               | 30.4                         | 25.0    | 13.0                                     |
| CDEP105NP-0R8M□-32 | 0R8MH | 0.8 μ H ± 20%             | 5.3(4.4)                               | 25.2                         | 20.7    | 11.2                                     |
| CDEP105NP-1R2M□-32 | 1R2MH | 1.2 μ H ± 20%             | 7.5(6.2)                               | 21.0                         | 17.4    | 9.0                                      |
| CDEP105NP-1R5M□-32 | 1R5MH | 1.5 μ H ± 20%             | 10.5(8.7)                              | 18.0                         | 15.0    | 7.8                                      |
| CDEP105NP-2R0M□-32 | 2R0MH | 2.0 μ H ± 20%             | 12.4(10.3)                             | 15.8                         | 13.1    | 7.4                                      |
| CDEP105NP-2R5M□-32 | 2R5MH | 2.5 μ H ± 20%             | 18.0(15.0)                             | 14.0                         | 11.7    | 6.2                                      |
| CDEP105NP-3R0M□-32 | 3R0MH | 3.0 μ H ± 20%             | 23.8(19.8)                             | 12.6                         | 10.5    | 4.9                                      |

**※ Description of part name**

CDEP105NP-0R1N□-32

|  |   |              |
|--|---|--------------|
|  | B | Box          |
|  | C | Carrier Tape |

※1 Saturation current: The DC current at which the inductance decreases to 65%  
(for the inductance tolerance : ±30%) or 75% (for the inductance tolerance: ±20%) of its  
nominal.

※2 Temperature rise current: The DC current at which the temperature rise is Δt=40°C.  
(Ta=20°C)