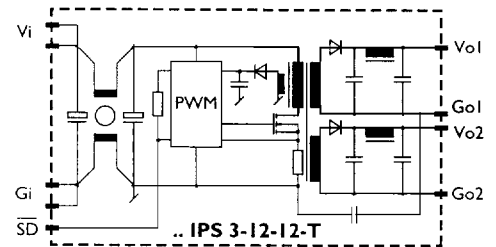
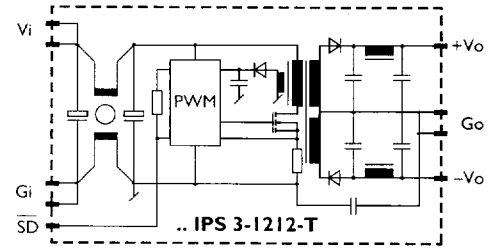


# IPS, IPW

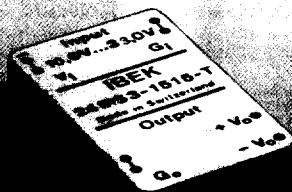
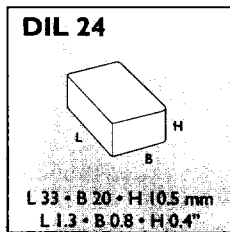
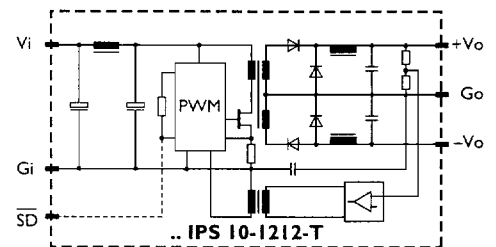
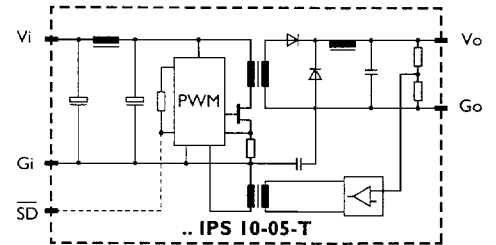
## 24 IPS 3-... through 48 IPS 3-... and 24 IPW 3-... through 48 IPW 3-...

- Output power 3 W
- Exceptionally wide input voltage range
- One or two outputs available
- High efficiency
- Input/output isolation:  
IPS 3 types 1400 V<sub>pp</sub>/500 V<sub>rms</sub>  
IPW 3 types 3000 V<sub>pp</sub>/1060 V<sub>rms</sub>
- Input filter incorporated
- Shutdown control at primary side
- Short-circuit proof
- Module height 10.5 mm (0.4") only
- Other footprints (CPS 3 types) on request



## 24 IPS 10-... and 48 IPS 10-...

- Output power 10 W
- Exceptionally wide input voltage range
- One or two outputs available
- High efficiency
- Input/output isolation 1400 V<sub>pp</sub>/500 V<sub>rms</sub>
- Input filter incorporated
- Shutdown control at primary side (on request)
- Continuously short-circuit proof
- Metal case; height 10.5 mm (0.4") only



# DC-DC converters with isolation

## Options

**S** Temperature range  
 $T_A$ : -40...85°C (-40...185°F)

## 24 IPS 3-.. through 48 IPS 3-.. and 24 IPW 3-.. through 48 IPW 3-..

Output 1		Output 2		Input $V_i$ V DC	Eff. $\eta$ %	Case	Type Basic version $T_A$ : -25...71°C		Options
$V_{o\ nom}$ V DC	$I_{o\ nom}$ mA	$V_{o\ nom}$ V DC	$I_{o\ nom}$ mA				.. IPS 3-05-T	.. IPW 3-05-T	
5	500	-	-	24 IPS 3-../24 IPW 3-.. 10...33	80	DIL 24	.. IPS 3-12-T	.. IPW 3-12-T	S
12	250	-	-				.. IPS 3-15-T	.. IPW 3-15-T	
15	200	-	-				.. IPS 3-0505-T	.. IPW 3-0505-T	
5	250	-5	-250 <sup>1)</sup>	48 IPS 3-../48 IPW 3-.. 18...75 <sup>2)</sup>	82	DIL 24	.. IPS 3-1212-T	.. IPW 3-1212-T	S
12	125	-12	-125 <sup>1)</sup>				.. IPS 3-1515-T	.. IPW 3-1515-T	
15	100	-15	-100 <sup>1)</sup>				.. IPS 3-05-05-T	.. IPW 3-05-05-T	
5	250	5	250				.. IPS 3-12-12-T	.. IPW 3-12-12-T	
12	125	12	125				.. IPS 3-15-15-T	.. IPW 3-15-15-T	
15	100	15	100				.. IPS 3-05-12-T	.. IPW 3-05-12-T	
5	250	12	125				.. IPS 3-05-15-T	.. IPW 3-05-15-T	
5	250	15	100						

<sup>1)</sup> Common ground

<sup>2)</sup> Between 72...75 V, the minimum output current must be 25% of  $I_{o\ nom}$

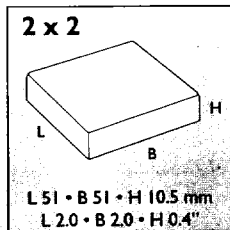
## 24 IPS 10-.. and 48 IPS 10-..

Output 1		Output 2		Input $V_i$ V DC	Eff. $\eta$ %	Case	Type Basic version $T_A$ : -25...71°C		Pin con- fig.	Options
$V_{o\ nom}$ V DC	$I_{o\ nom}$ mA	$V_{o\ nom}$ V DC	$I_{o\ nom}$ mA				.. IPS 10-05-T	.. IPS 10-12-T		
5	2000	-	-	24 IPS 10-.. 10...33	80	2" x 2"	.. IPS 10-15-T	C, B, G, F	S <sup>2)</sup>	
12	833	-	-				.. IPS 10-0505-T			.. IPS 10-1212-T
15	667	-	-				.. IPS 10-1515-T			
5	1000	-5	-1000 <sup>1)</sup>	48 IPS 10-.. 18...75 <sup>2)</sup>			.. IPS 10-1212-T			
12	417	-12	-417 <sup>1)</sup>				.. IPS 10-1515-T			
15	333	-15	-333 <sup>1)</sup>							

<sup>1)</sup> Common ground

<sup>2)</sup> On request. At  $T_A = 85^\circ\text{C}$  (185°F)  
 single output units: 8 W max.  
 double output units: 7.2 W max.

<sup>3)</sup> Between 72...75 V, the minimum output current must be 10% of  $I_{o\ nom}$



**Accessory**  
410



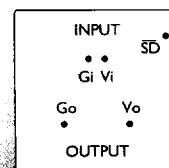
## Pin configurations

(bottom view)

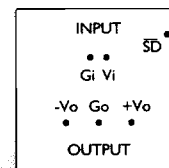
Pin configurations C, B, D without shutdown  $\overline{SD}$

Pin configurations G, F, H with shutdown  $\overline{SD}$

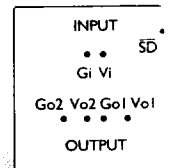
Pin configuration to be specified with order (e.g. 24IPS10-12-TC)



C, G



G



D, H

