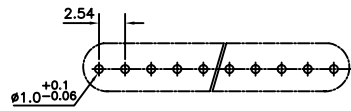
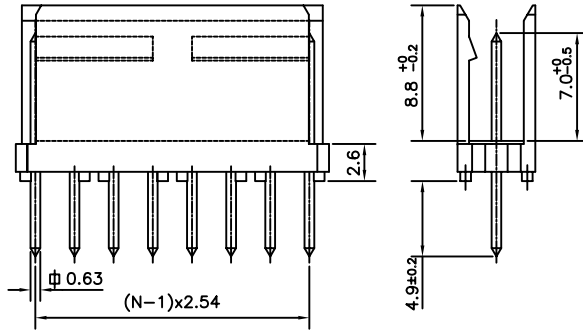
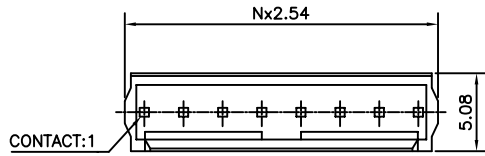




FCIconnect.com

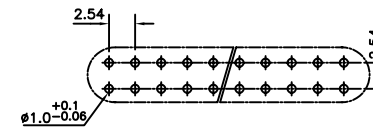
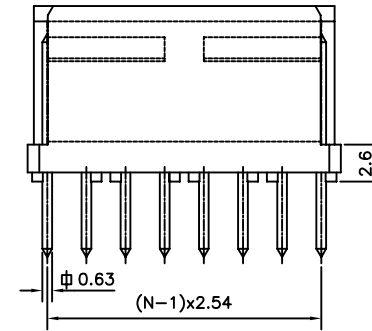
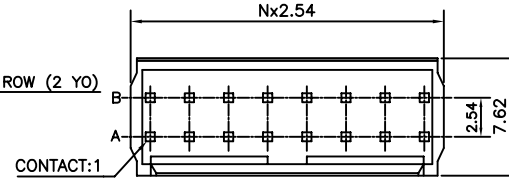
Copyright FCI

SINGLE ROW (1 YO)



PCB DRILLING DETAILS

DOUBLE ROW (2 YO)



PCB DRILLING DETAILS

ORDERING INFORMATION

8614 - 20 - XX - X - XX - X - 063 - XX
LF :-LEAD FREE
063-TERMINAL HEIGHT-4.9

8614 SERIES

20- SHROUDED MALE

NO.OF CONTACTS

2 TO 25,4 TO 50

NO.OF ROWS

1 - SINGLE ROW

2 - DUAL ROW

YO - STRAIGHT SOLDER

PLATING

- 1 - TIN LEAD
2 - 0.2 μAu
3 - 0.75 μAu SELECTIVE
4 - 0.2 μAu SELECTIVE
5 - 1.27 μAu SELECTIVE
6 - 0.75 μAu
7 - GOLD FLASH
8 - 1.27 μAu SELECTIVE
9 - 0.4 μ FULL GOLD
10 - FULL GOLD FLASH

TECHNICAL SPECIFICATION

- INSULATOR MATERIAL : SELF EXTINGUISHING THERMOPLASTIC (UL94 V0)
CONTACT MATERIAL : COPPER ALLOY
MAXIMUM VOLTAGE : 1000 V rms.
NOMINAL CURRENT : 3A AT 20°C
INSULATION RESISTANCE : > 5000 MΩ
CONTACT RESISTANCE : < 20 mΩ
CLIMATIC CATAGORY : -55°C TO +125°C / 21 DAYS EXPOSURE TO- INDUSTRIAL ENVIRONMENT HUMIDITY TEST AS HE-14.

Notes:
1, THE PRODUCT (LF) MEETS EUROPEAN UNION DIRECTIVES AND OTHER COUNTRY REGULATIONS AS DESCRIBED IN GS-22-008

Table with columns: mat'l. code, REF, TECH, SPEC, ISO 1302, tolerance, projection, product family, title, dwg no, sheet 1 of 1, size, type, Product, Customer, Drawing. Includes FCI logo and revision table.