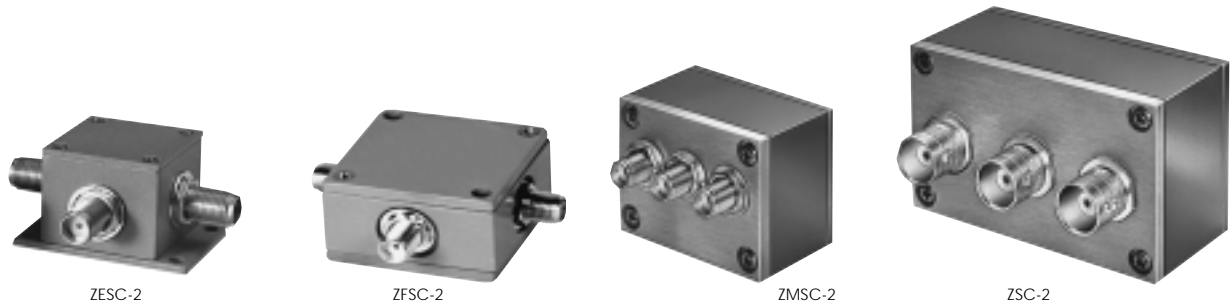


POWER SPLITTERS/COMBINERS

50 & 75Ω

2 WAY-0° 2 kHz to 10 GHz



MODEL NO.	FREQ. RANGE MHz f_l-f_u	ISOLATION dB						INSERTION LOSS, dB Above 3dB						PHASE UNBAL. Degrees			AMPLITUDE UNBAL. dB			VSWR (:1)		CASE STYLE Note B	CONNECTOR	PRICE \$ ea. Qty. (1-9)
		L	M*	U	L	M*	U	L	M*	U	L	M*	U	S	OUT	S	OUT							
ZESC-2-11	10-2000	19	10	18	13	20	11	0.5	0.9	0.5	1.0	0.6	1.2	1	3	6	0.20	0.30	0.50			V37	ar	71.95
ZFSC-2-1	5-500	30	25	28	20	25	20	0.2	0.5	0.3	0.6	0.6	0.8	2	4	4	0.15	0.15	0.30			K18	ar	44.95
■ ZFSC-2-1-75	0.25-300	20	15	30	25	25	20	0.4	0.75	0.4	0.75	0.4	1.0	2	3	5	0.15	0.20	0.30			K18	ar	45.95
■ ZFSC-2-1W-75	5-600	44	26	45	30	31	20	0.22	0.6	0.27	0.7	0.46	0.9	1	2	3	0.20	0.30	0.40			K18	ar	50.95
ZFSC-2-1W	1-750	30	20	28	20	25	20	0.2	0.5	0.4	0.8	0.8	1.0	2	4	4	0.15	0.15	0.30			K18	ar	48.95
ZFSC-2-2	10-1000	30	20	25	20	23	18	0.2	0.5	0.5	1.0	0.9	1.2	2	4	4	0.15	0.15	0.30			K18	ar	51.95
ZFSC-2-9G	3500-9000	18	12	20	12			0.5	1.5	0.6	1.2			7	10		0.30	0.50				JJJ142	as	59.95
ZFSC-2-10G	2000-10000	15	9	20	12			0.5	1.5	0.6	1.6			7	12		0.60	0.50				JJJ142	as	69.95
ZFSC-2-4	0.2-1000	20	15	25	20	23	18	0.2	0.8	0.5	1.0	0.9	1.2	2	4	4	0.15	0.15	0.30	see Yoni for		K18	ar	55.95
ZFSC-2-5	10-1500	25	15	30	20	25	18	0.25	0.6	0.5	1.0	0.8	1.5	2	3	4	0.15	0.20	0.50			K18	ar	59.95
⊕ ZFSC-2-6*	0.002-60	27	20	30	20	27	20	0.3	0.6	0.3	0.6	0.6	1.0	2	3	4	0.15	0.20	0.30	Performance		K18	ar	49.95
⊕ ZFSC-2-6-75	0.004-60	30	20	35	20	25	20	0.5	0.8	0.4	0.8	0.7	1.0	1	2	3	0.15	0.20	0.30			K18	ar	51.95
ZFSC-2-11	10-2000	14	10	16	14	20	15	1.2	1.5	1.2	1.5	1.0	2.2	1	2	4	0.20	0.30	0.50	Data and		K18	ar	64.95
▲ ZFSC-2-2500	10-2500	16	11	17	14	17	14	0.5	0.8	0.6	1.4	0.8	1.5	1	4	8	0.20	0.30	0.40	curves		K18	ar	74.95
⊕ ZMSC-2-1	0.1-400	20	15	25	20	25	20	0.2	0.5	0.4	0.75	0.6	1.0	2	3	4	0.15	0.20	0.30			M21	at	49.95
ZMSC-2-1W	1-650	25	20	35	20	25	20	0.3	0.5	0.5	0.8	0.7	1.0	2	3	4	0.15	0.20	0.30			M21	at	54.95
⊕ ZMSC-2-2*	0.002-60	27	20	30	20	27	20	0.3	0.6	0.3	0.6	0.6	1.0	2	3	4	0.15	0.25	0.30			M21	at	59.95
ZSC-2-1	0.1-400	20	15	25	20	25	20	0.2	0.5	0.4	0.75	0.6	1.0	2	3	4	0.15	0.20	0.30			M22	at	47.95
ZSC-2-1W	1-650	25	20	35	25	25	20	0.3	0.5	0.5	0.8	0.7	1.0	2	3	4	0.15	0.20	0.30			M22	at	49.95
⊕ ZSC-2-2*	0.002-60	25	20	30	20	27	20	0.3	0.6	0.3	0.6	0.6	1.0	2	3	4	0.15	0.25	0.30			M22	at	52.95
⊕ ZSC-2-2-75**	0.002-60	25	20	30	20	27	20	0.3	0.6	0.3	0.6	0.6	1.0	2	3	4	0.15	0.25	0.30			M22	at	53.95
ZSC-2-4	10-1000	25	20	35	20	25	20	0.2	0.5	0.5	0.8	0.7	1.3	2	4	6	0.15	0.20	0.30			M22	at	52.95
■ ZSC-2375	55-85			35	25					0.3	0.5					1		0.10				M22	at	52.95
■ ZSC-2-1-75	0.25-300	20	15	30	20	20	15	0.4	0.75	0.4	0.75	0.4	1.0	2	3	5	0.15	0.20	0.30			M22	at	49.95

NOTES:

- * Isolation specified to 0.006 MHz
- ** Insertion loss, specified to -20°C from 0.002 to 0.004 MHz. From 2 to 6 KHz, isolation 14 dB min.
- ⊕ When only specification for M range given, specification applies to entire frequency range.
- ⊕ At low range frequency band (f_l to $10 f_l$), linearly derate maximum input power by 13 dB.
- Denotes 75 Ohm model, for coax connector models 75 Ohm BNC connectors are standard.
- ▲ Available only with SMA connectors
- ▼ Available with SMA or N connectors, ZAPD-50 & -50W with N only.
- A. General Quality Control Procedures, Environmental Specifications, Hi-Rel and MIL description are given in "Mini-Circuits Guarantees Quality" article.
- B. For details on Connector types, case mounted options, case finishes see "Case styles & Outline Drawings".
- C. Prices and specifications subject to change without notice.
- 1. Absolute maximum power, voltage and current ratings:
 - 1a. Matched power rating:
 - Models ZAPD, ZN2PD, ZC2PD, ZN2PD2 10 Watt
 - ZAPD-900-5W, ZN2PD-20 5W (as a splitter)
 - ZAPD-30 and other models 1 Watt
 - 1b. Internal load dissipation:
 - ZAPD-900-5W 1W max.
 - ZN2PD-20 0.725W max.
 - ZN2PD-9G, ZAPD-2-22-75, ZN2PD2 0.25W max.
 - All other models 0.125 Watt

coaxial connections

see case style outline drawing for pin locations

PORT	ar	as	at
SUM PORT	3	5	2
PORT 1	1	1	1
PORT 2	2	2	3
GND EXT.	—	—	—
CASE GND	—	—	—
NOT USED	—	—	—



Distribution Centers NORTH AMERICA 800-654-7949 • 417-335-5935 • Fax 417-335-5945 • EUROPE 44-1252-832600 • Fax 44-1252-837010

Mini-Circuits ISO 9001 & ISO 14001 Certified

INTERNET <http://www.minicircuits.com>

P.O. Box 350166, Brooklyn, New York 11235-0003 (718) 934-4500 Fax (718) 332-4661

050818

Coaxial



MODEL NO.	FREQ. RANGE MHz f_L - f_U	ISOLATION dB			INSERTION LOSS, dB Above 3dB			PHASE UNBAL. Degrees			AMPLITUDE UNBAL. dB			VSWR (:1)		CASE STYLE Note B	CONNECTION	PRICE \$ ea. Qty. (1-9)	
		L Typ. Min.	M ^o Typ. Min.	U Typ. Min.	L Typ. Max.	M ^o Typ. Max.	U Typ. Max.	L Max.	M ^o Max.	U Max.	L Max.	M ^o Max.	U Max.	S Typ. Max.	OUT Typ. Max.				
ZC2PD-900	800-900		30	20		0.1	0.4		2		0.20	1.10	1.30	1.10	1.30	F183	as	64.95	
ZN2PD-20	750-2000	18 ^{L^o} 15	25	20	18 ^{U^o} 15		0.2	0.5		4		0.30	1.16	1.5	1.10	1.35	VVV180	as	67.95
ZN2PD-920	800-920		30	20			0.15	0.4		2		0.20	1.10	1.20	1.04	1.20	VVV180	as	59.95
ZN2PD-920W	700-1050		22	15			0.15	0.5		3		0.30	1.20	1.50	1.04	1.20	VVV180	as	54.95
ZN2PD-1900	1600-1900		30	20			0.18	0.4		2		0.20	1.20	1.35	1.04	1.20	VVV180	as	69.95
ZN2PD-1900W	1500-2000		24	15			0.2	0.5		3		0.30	1.20	1.50	1.04	1.20	VVV180	as	64.95
ZN2PD-9G	1700-9000		22	15			0.5	1.4		4		0.60					VVV180	as	69.95
NEW ZN2PD2-50	500-5000		25	15			0.8	1.4		4		0.5	1.20	—	1.10	—	VVV845	as	74.95
	600-1600		24	17			0.7	1.1		2		0.3	1.20	—	1.10	—			
	1600-2700		26	18			0.8	1.2		3		0.3	1.20	—	1.10	—			
	2700-3600		28	19			0.9	1.3		3		0.4	1.20	—	1.10	—			
	3700-4800		22	18			0.9	1.4		4		0.5	1.20	—	1.10	—			
	GHz																		
IZY2PD-64	5.8-6.4		35	24			0.2	0.5		5		0.30	1.05	1.30	1.20	1.35	JJJ245	as	89.95
IZY2PD-86	7.0-8.6		30	18			0.1	0.5		6		0.25	1.10	1.45	1.10	1.40	JJJ245	as	94.95
ZAPD-1	0.5-1.0		25	19			0.25	0.6		2		0.20					F14	as	54.95
ZAPD-2	1.0-2.0		25	19			0.25	0.6		2		0.20					F14	as	54.95
■ ZAPD-2-22-75	0.91-2.15		30	20			0.2	0.7		2		0.40	1.15	1.60	1.10	1.30	F14	as	58.95
▼ ZAPD-20	0.7-2.0		30	20			0.30	0.7		3		0.40	1.15	1.35	1.10	1.30	F53	as	59.95
ZAPD-21	0.5-2.0		25	18			0.25	1.0		3		0.20					F53	as	59.95
▲ ZAPD-30	0.02-3.0	14 12	16	12	20 14	1.1 1.5	1.1	1.8	1.4 2.3	3 5 9	0.30 0.40 0.80	1.50 1.95	1.55 2.10	see Yoni for Performance Data and curves			F14	as	79.95
▼ ZAPD-4	2.0-4.2		25	19			0.4	0.8		6		0.40					F14	as	59.95
▼ ZAPD-50	4.4-5.0		26	20			0.3	0.8		5		0.50					F14	as	54.95
▼ ZAPD-50W	4.2-6.0		26	16			0.3	0.8		5		0.70					F14	as	64.95
▼ ZAPD-900-5W	0.1-0.9		23	18			0.3	1.0		3		0.30	1.15	1.50	1.22	1.50	F14	as	59.95
▼ ZAPD-1750	0.95-1.75		30	22			0.2	0.4		4		0.50	1.15	1.50	1.22	1.50	F14	as	54.95

L = low range [f_L to $10 f_L$]
 L^1 = f_L to 6 GHz
 L^0 = 750 to 875 MHz

M = mid range [$10 f_L$ to $f_U/2$]
 U^1 = 6 GHz to f_U
 U^0 = 1850 to 2000 MHz

U = upper range [$f_U/2$ to f_U]

NSN GUIDE

MCL NO.	NSN	MCL NO.	NSN	MCL NO.	NSN
ZAPD-1(TNC)	5985-01-250-4883	ZFSC-2-2(SMA)	6625-01-333-1127	ZN2PD-920W-S	5895-01-522-3794
ZAPD-2(BNC)	5895-01-476-0831	ZFSC-2-2B	5895-01-330-4416	ZSC-2-1-75BR	5985-01-476-2126
ZAPD-2(SMA)	5895-01-229-7431	ZFSC-2-4	6625-01-291-3346	ZSC-2-1	5895-01-214-6032
ZAPD-2(N)	5985-01-449-0825	ZFSC-2-4B	5895-01-446-1158	ZSC-2-1B	6625-01-109-3706
ZAPD-4(N)	6625-01-173-1887	ZFSC-2-5	6625-01-253-2444	ZSC-2-1(BNC)	5895-01-036-6254
ZAPD-4(SMA)	5985-01-383-0636	ZFSC-2-6	6625-01-419-4241	ZSC-2-1B(BNC)	6625-00-270-3055
ZAPD-900-5W-N	5985-01-523-2508	ZFSC-2-6(BNC)	5895-01-408-6857	ZSC-2-1W	5895-01-283-0850
ZESC-2-11	5985-01-381-9081	ZFSC-2-6B	5985-01-315-2869	ZSC-2-1WB	6625-01-264-8985
ZFSC-2-1	6625-01-139-3499	ZFSC-2-9G	5895-01-524-8996	ZSC-2-1-75B	5895-01-136-8182
ZFSC-2-1(SMA)	6625-01-213-6490	ZFSC-2-10G	5895-01-467-5372	ZSC-2-2B	5820-01-136-7245
ZFSC-2-1(BNC)	5985-01-176-4551	ZFSC-2-11(SMA)	6625-01-415-2183	ZSC-2-2-75B	5915-01-012-8162
ZFSC-2-1-75	5895-01-325-4795	ZFSC-2-2500B	5895-01-516-3575	ZSC-2375	5895-01-229-0157
ZFSC-2-1W(SMA)	6625-01-200-5094	ZMSC-2-1	5985-01-204-1526	ZSC-2-4	5895-01-523-0183
ZFSC-2-1W	5895-01-348-3534	ZMSC-2-1B	5895-01-253-2445	ZSC-2-4B	5895-01-467-5362
ZFSC-2-2B(SMA)	6625-01-362-1801	ZMSC-2-1BR	5985-01-338-9329		
ZFSC-2-2	5895-01-467-5374	ZMSC-2-1W	5895-01-127-0232		



The Design Engineers Search Engine
 Provides Actual Data Instantly
 At: <http://www.minicircuits.com>

In Stock... Immediate Delivery
 For Custom Versions Of Standard Models
 Consult Our Applications Dept.

