

# Power Splitter



## Notes:

- Non-catalog model. Please consult factory for price and delivery.
- General Quality Control Procedures and Environmental Specifications are given in [Mini-Circuits Guarantees Quality](#).  
Hi-Rel, MIL description are given in [Hi-Rel and MIL](#)
- Prices and Specifications subjects to change without notice.

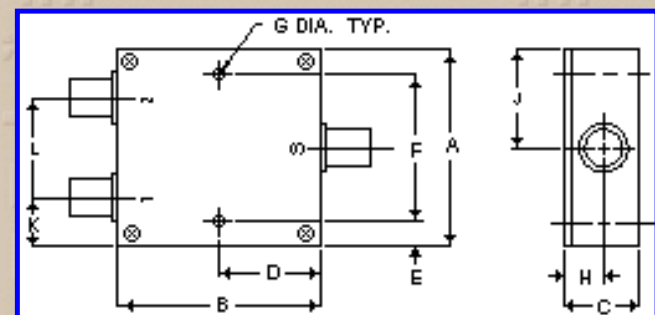
## Z99SC-ED11451/1 2 Way-0°

| Frequency MHz | Isolation, dB |                |                | Insertion Loss, dB<br>Above 3.0dB |                |                | Phase Unbalance Degrees |           |           | Amplitude Unbalance, dB |           |           | VSWR (:1) |                |                  |
|---------------|---------------|----------------|----------------|-----------------------------------|----------------|----------------|-------------------------|-----------|-----------|-------------------------|-----------|-----------|-----------|----------------|------------------|
|               | $f_L - f_U$   | L<br>Typ. Min. | M<br>Typ. Min. | U<br>Typ. Min.                    | L<br>Typ. Max. | M<br>Typ. Max. | U<br>Typ. Max.          | L<br>Max. | M<br>Max. | U<br>Max.               | L<br>Max. | M<br>Max. | U<br>Max. | S<br>Typ. Max. | OUT<br>Typ. Max. |
| 0.20-650      | 25            | 25             | 13             | 0.20                              | 0.40           | 1.05           |                         |           |           |                         |           |           |           | 1.30           | 1.20             |

L=low range( $f_L$  to  $10f_L$ ) M=mid range( $10f_L$  to  $f_U/2$ ) U=upper range( $f_U/2$  to  $f_U$ )

## Pin Connections

| Port | Sum | Port 1 | Port 2 |
|------|-----|--------|--------|
| as   | S   | 1      | 2      |



Case Style - F183 (inch,mm) weight: 24 grams.

| A      | B      | C      | D     | E     | F      | G     | H     | J      |
|--------|--------|--------|-------|-------|--------|-------|-------|--------|
| 1.26   | 1.00   | .70    | .200  | .200  | .860   | .125  | .35   | .63    |
| 32.004 | 25.400 | 17.780 | 5.080 | 5.080 | 21.844 | 3.175 | 8.890 | 16.002 |
| K      | L      | M      | N     | P     | Q      | R     | S     | T      |
| .38    | .50    |        |       |       |        |       |       |        |
| 9.652  | 12.700 |        |       |       |        |       |       |        |

Tolerance: .x ± .1 .xx ± .03 .xxx ± .015 inch.

## Material and Finish:

Case material: aluminum alloy. Finish: iridite per MIL-C-5541

## Mounting:

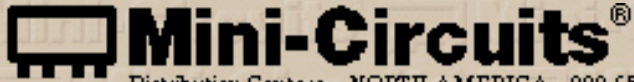
Mounting bracket available on request. Add suffix B to part number.

## Connectors:

Connectors: Female SMA only.

| FREQ (MHz) | Insertion Loss (dB) S-1 | Insertion Loss (dB) S-2 | Amplitude Unbalance (dB) | Isolation (dB) 1-2 | Phase Unbalance (Degrees) | FREQ (MHz) | VSWR S | VSWR 1 | VSWR 2 |
|------------|-------------------------|-------------------------|--------------------------|--------------------|---------------------------|------------|--------|--------|--------|
| 0.200      | 3.21                    | 3.21                    | 0.000                    | 20.85              | 0.06                      | 0.200      | 1.29   | 1.53   | 1.53   |
| 0.300      | 3.20                    | 3.20                    | 0.000                    | 23.97              | 0.06                      | 0.300      | 1.19   | 1.33   | 1.33   |
| 0.400      | 3.19                    | 3.19                    | 0.000                    | 26.04              | 0.02                      | 0.400      | 1.15   | 1.25   | 1.25   |
| 0.500      | 3.20                    | 3.19                    | 0.000                    | 27.49              | 0.01                      | 0.500      | 1.12   | 1.20   | 1.20   |
| 0.600      | 3.20                    | 3.20                    | 0.000                    | 28.51              | 0.04                      | 0.600      | 1.11   | 1.17   | 1.17   |
| 0.700      | 3.19                    | 3.20                    | 0.000                    | 29.28              | 0.04                      | 0.700      | 1.10   | 1.15   | 1.15   |
| 0.800      | 3.20                    | 3.20                    | 0.000                    | 29.86              | 0.01                      | 0.800      | 1.09   | 1.14   | 1.14   |
| 0.900      | 3.20                    | 3.20                    | 0.000                    | 30.34              | 0.04                      | 0.900      | 1.09   | 1.13   | 1.13   |
| 1.000      | 3.20                    | 3.20                    | 0.000                    | 30.70              | 0.01                      | 1.000      | 1.08   | 1.12   | 1.12   |
| 3.000      | 3.16                    | 3.16                    | 0.000                    | 34.38              | 0.04                      | 3.000      | 1.06   | 1.06   | 1.07   |
| 5.000      | 3.15                    | 3.15                    | 0.000                    | 35.56              | 0.04                      | 5.000      | 1.05   | 1.05   | 1.05   |
| 7.000      | 3.15                    | 3.14                    | 0.000                    | 35.87              | 0.06                      | 7.000      | 1.05   | 1.04   | 1.04   |
| 9.000      | 3.16                    | 3.16                    | 0.000                    | 35.87              | 0.10                      | 9.000      | 1.05   | 1.04   | 1.04   |
| 11.000     | 3.16                    | 3.15                    | 0.000                    | 35.68              | 0.07                      | 11.000     | 1.05   | 1.04   | 1.04   |
| 14.000     | 3.16                    | 3.16                    | 0.000                    | 35.35              | 0.06                      | 14.000     | 1.05   | 1.04   | 1.04   |
| 15.000     | 3.16                    | 3.16                    | 0.000                    | 35.20              | 0.08                      | 15.000     | 1.05   | 1.04   | 1.04   |
| 16.000     | 3.16                    | 3.15                    | 0.000                    | 35.04              | 0.11                      | 16.000     | 1.05   | 1.04   | 1.04   |
| 45.000     | 3.19                    | 3.19                    | 0.010                    | 30.95              | 0.18                      | 45.000     | 1.07   | 1.04   | 1.04   |
| 74.000     | 3.22                    | 3.22                    | 0.000                    | 27.92              | 0.40                      | 74.000     | 1.09   | 1.04   | 1.04   |
| 103.000    | 3.24                    | 3.23                    | 0.010                    | 25.66              | 0.60                      | 103.000    | 1.12   | 1.04   | 1.04   |
| 132.000    | 3.28                    | 3.27                    | 0.010                    | 23.87              | 0.77                      | 132.000    | 1.15   | 1.04   | 1.04   |
| 161.000    | 3.30                    | 3.29                    | 0.010                    | 22.35              | 0.96                      | 161.000    | 1.19   | 1.04   | 1.05   |
| 190.000    | 3.33                    | 3.32                    | 0.010                    | 21.09              | 1.18                      | 190.000    | 1.22   | 1.04   | 1.05   |
| 219.000    | 3.38                    | 3.35                    | 0.020                    | 20.00              | 1.31                      | 219.000    | 1.25   | 1.05   | 1.06   |
| 248.000    | 3.42                    | 3.39                    | 0.020                    | 19.05              | 1.46                      | 248.000    | 1.29   | 1.06   | 1.07   |
| 277.000    | 3.45                    | 3.42                    | 0.030                    | 18.20              | 1.58                      | 277.000    | 1.33   | 1.06   | 1.07   |
| 306.000    | 3.50                    | 3.46                    | 0.040                    | 17.45              | 1.75                      | 306.000    | 1.37   | 1.07   | 1.08   |
| 350.000    | 3.57                    | 3.52                    | 0.050                    | 16.43              | 2.00                      | 350.000    | 1.43   | 1.09   | 1.09   |
| 375.000    | 3.62                    | 3.56                    | 0.060                    | 15.91              | 2.18                      | 375.000    | 1.46   | 1.10   | 1.11   |

|        |      |      |       |       |      |        |      |      |      |
|--------|------|------|-------|-------|------|--------|------|------|------|
| 400.00 | 3.68 | 3.61 | 0.060 | 15.44 | 2.29 | 400.00 | 1.50 | 1.12 | 1.12 |
| 425.00 | 3.71 | 3.64 | 0.070 | 15.00 | 2.36 | 425.00 | 1.54 | 1.13 | 1.13 |
| 450.00 | 3.75 | 3.67 | 0.090 | 14.58 | 2.54 | 450.00 | 1.57 | 1.15 | 1.14 |
| 475.00 | 3.83 | 3.72 | 0.110 | 14.23 | 2.71 | 475.00 | 1.61 | 1.16 | 1.15 |
| 500.00 | 3.88 | 3.76 | 0.120 | 13.86 | 2.75 | 500.00 | 1.65 | 1.18 | 1.17 |
| 525.00 | 3.90 | 3.80 | 0.100 | 13.49 | 2.88 | 525.00 | 1.70 | 1.20 | 1.18 |
| 550.00 | 3.97 | 3.85 | 0.120 | 13.19 | 3.08 | 550.00 | 1.74 | 1.21 | 1.19 |
| 575.00 | 4.05 | 3.93 | 0.120 | 12.92 | 3.14 | 575.00 | 1.79 | 1.24 | 1.21 |
| 600.00 | 4.09 | 3.97 | 0.120 | 12.61 | 3.30 | 600.00 | 1.83 | 1.26 | 1.23 |
| 625.00 | 4.14 | 4.01 | 0.130 | 12.33 | 3.48 | 625.00 | 1.88 | 1.28 | 1.25 |
| 650.00 | 4.24 | 4.08 | 0.160 | 12.14 | 3.50 | 650.00 | 1.93 | 1.30 | 1.27 |



INTERNET <http://www.minicircuits.com>

P.O. Box 350166, Brooklyn, New York 11235-0003 (718) 934-4500 Fax (718) 332-4661

Distribution Centers NORTH AMERICA 800-654-7949 • 417-335-5935 • Fax 417-335-5945 • EUROPE • 44-1252-832600 • Fax 44-1252-837010

ISO 9001 CERTIFIED

[Back](#)

# i2 Technologies US, Inc.

## HTML Pages converted to PDF Document

This document contains component information from the manufacturer's website which are not available in a revision controlled document from the manufacturer. To facilitate the addition of these parts into the Electronics Database, we are converting the HTML pages related to that part, from the manufacturer's website into Adobe PDF format. The contents of this document is based on the information provided on the manufacturer's website, therefore the information may have been changed by the manufacturer since this was created.

