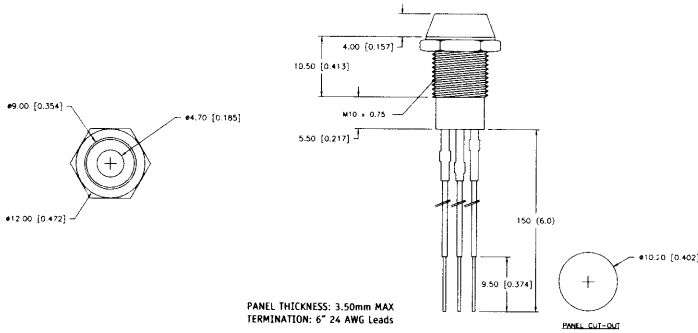


## SSI-LXR956XW-150 Series

## T-5mm Chrome Indicator, 3-Leaded LED, 6" Leads



### FEATURES / OPTIONS

- State-of-the-Art, High Brightness LED Chip Technology
- Choice of LED Colors and Lens Finishes
- Bi-Color Styles Optional
- Insulated Lead Lengths Optional
- Easy Installation Through Panel
- Small Volumes Acceptable
- Available Without Insulated Leads (Bare LED Pins)
- Blinking LED
- With Internal Resistor for 5V and 12V Operation
- With Connector
- Common Anode Version

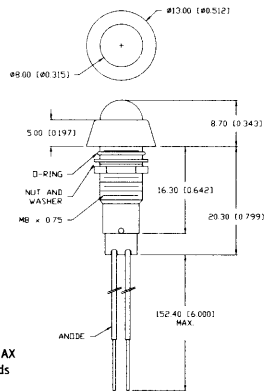
### APPLICATIONS / USES

- Front Panel Status Indicators
- Alarm/Warning Indicators
- Front Panel Circuit Fault Indicators
- Instrument Control Panels
- Medical Diagnostics Indicators
- Industrial Automation Control Panels

Lumex Part Number	Dice Material	Emitted Color	Peak (nm)	Epoxy Lens	Operating Current (mA)	Operating TYP. Vf (V)	Brightness		View Angle° 2x THETA	Component LED Used
							TYP. mcd	@ mA		
SSI-LXR956IGW-150	GaAsP GaP	High Intensity Red	635	Milky White	5-25	2.1	45	20	60	SSL-LX5099IGW
		Green	565	Diffused	5-25	2.1	55	20		
SSI-LXR956IYW-150	GaAsP GaAsP	High Intensity Red	635	Milky White	5-25	2.1	55	20	60	SSL-LX5099IYW
		Yellow	585	Diffused	5-25	2.1	40	20		
SSI-LXR956SISPGW15	AlInGaP AlInGaP	Super High Intensity Red	636	Milky White	5-25	2.0	200	20	60	SSL-LX5099SISPGW
		Super Pure Green	562	Diffused	5-25	2.2	50	20		
SSI-LXR956SISYW150	AlInGaP AlInGaP	Super High Intensity Red	636	Milky White	5-25	2.0	200	20	60	SSL-LX5099SISYW
		Super Yellow	590	Diffused	5-25	2.0	50	20		
SSI-LXR956SRSGW150	GaAlAs GaP	Super Red	660	Milky White	5-25	1.8	200	20	60	SSL-LX5099SRSGW
		Super Green	565	Diffused	5-25	2.1	50	20		
SSI-LXR956SYSPGW15	AlInGaP AlInGaP	Super Yellow	590	Milky White	5-25	2.0	50	20	60	SSL-LX5099SYSPGW
		Super Pure Green	562	Diffused	5-25	1.8	50	20		
SSI-LXR956YGW-150	GaAsP GaP	Yellow	585	Milky White	5-25	2.1	40	20	60	SSL-LX5099YGW
		Green	565	Diffused	5-25	2.1	45	20		

## SSI-R5015XC-L150 Series

## T-5mm Chrome Indicator, Spray Waterproof, Dome Lens, 6" Leads



### FEATURES / OPTIONS

- State-of-the-Art, High Brightness LED Chip Technology
- Choice of LED Colors and Lens Finishes
- Bi-Color Styles Optional
- Insulated Lead Lengths Optional
- Easy Installation Through Panel
- Small Volumes Acceptable
- Available Without Insulated Leads (Bare LED Pins)
- Waterproof Glass Lens
- Blinking LED
- With Internal Resistor for 5V and 12V Operation
- With Connector
- With External Adaptor to Operate at up to 230V

### APPLICATIONS / USES

- Front Panel Status Indicators
- Alarm/Warning Indicators
- Front Panel Circuit Fault Indicators
- Instrument Control Panels
- Medical Diagnostics Indicators
- Industrial Automation Control Panels

Lumex Part Number	Dice Material	Emitted Color	Peak (nm)	LED Lens	Operating Current (mA)	Operating TYP. Vf (V)	Brightness		View Angle° 2x THETA	Component LED Used
							TYP. mcd	@ mA		
<b>HIGH BRIGHTNESS</b>										
SSI-R5015SIC-L150	AlInGaP	Super High Intensity Red	636	Water Clear	5-25	2.0	100	20	60	SSL-LX5093SID
SSI-R5015SOC-L150	AlInGaP	Super Orange	610	Water Clear	5-25	2.0	100	20	60	SSL-LX5093SOD
SSI-R5015SPGC-L150	AlInGaP	Super Pure Green	562	Water Clear	5-25	2.2	50	20	60	SSL-LX5093SPGD
SSI-R5015SYC-L150	AlInGaP	Super Yellow	590	Water Clear	5-25	2.0	100	20	60	SSL-LX5093SYD
SSI-R5015USBC-L150	InGaN/SiC	Ultra Super Blue	470	Water Clear	5-25	3.5	60	20	60	SSL-LX5093USBD
<b>STANDARD BRIGHTNESS</b>										
SSI-R5015GC-L150	GaP	Green	565	Water Clear	5-25	2.1	20	20	60	SSL-LX5093GD
SSI-R5015IC-L150	GaAsP	High Intensity Red	635	Water Clear	5-25	2.1	20	20	60	SSL-LX5093ID
SSI-R5015SRC-L150	GaAlAs	Super Red	660	Water Clear	5-25	1.8	60	20	60	SSL-LX5093SRD
SSI-R5015YC-L150	GaAsP	Yellow	585	Water Clear	5-25	2.1	20	20	60	SSL-LX5093YD



1-800-278-5666 USA  
+886-3-5821124 Asian Pacific



www.lumex.com  
www.lumex.com.tw



1-800-944-2790 USA  
+886-3-5821154 Asian Pacific