

10 mm TOP & BOTTOM / SIDE ADJUST

Voltage Rating: High Temperature PTFE — 200 WVDC, all others — 100 WVDC

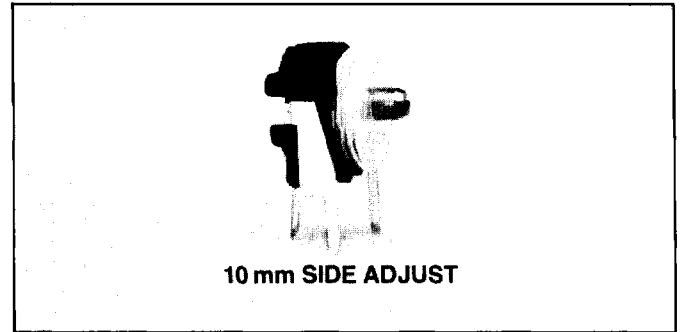
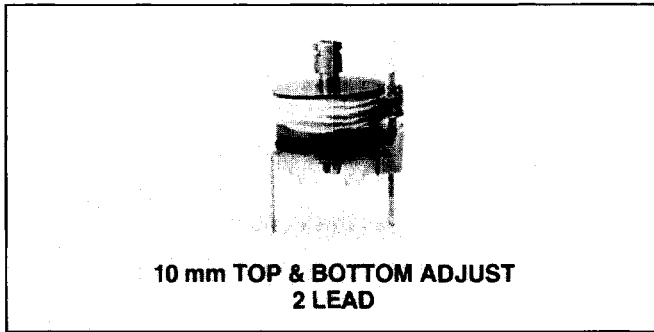
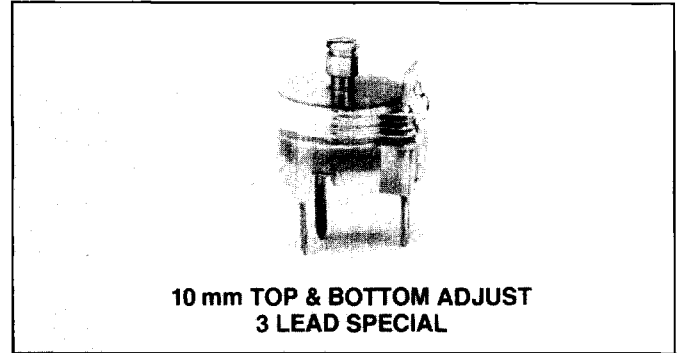
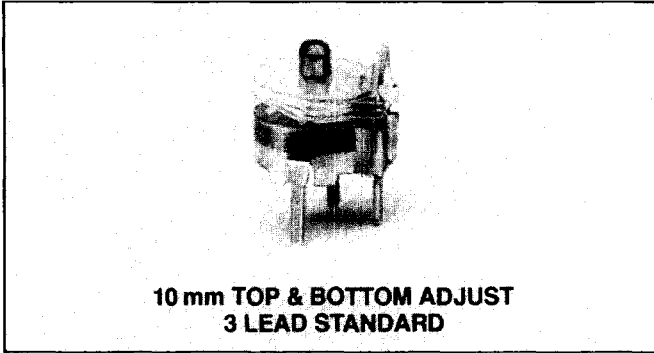
Dielectric Withstanding Voltage: High Temperature PTFE — 300 VDC, all others — 200 VDC

Contact Resistance: $\leq 0.010 \Omega$

Insulation Resistance: $\geq 10,000 M\Omega$

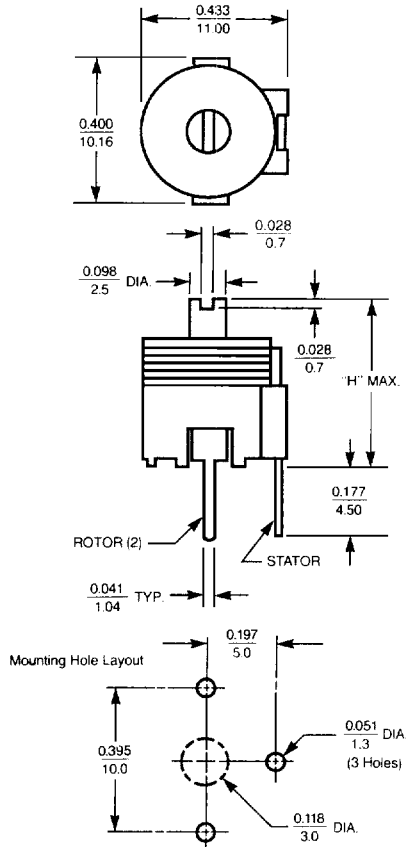
Torque: 0.50 - 6 oz-in (36 - 400 g-cm)

Capacitance change with axial load: $\leq 1.5\%$ with 7 oz (200 g) max

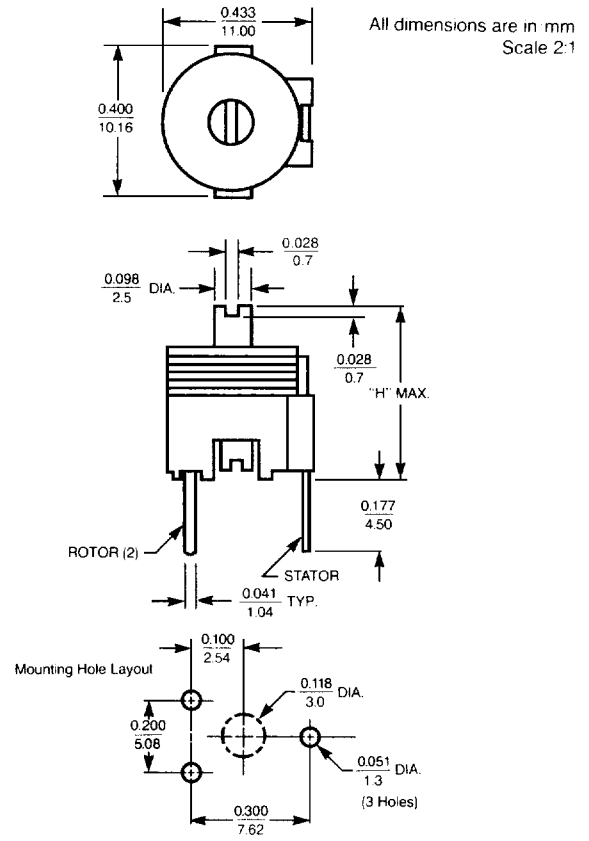


Dielectric	Capacitance Range		Q min @ 1 MHz	TCC PPM/°C	Operating Temperature	'H' max in/mm	Color Code	TOP/BOTTOM ADJUST	TOP/BOTTOM ADJUST	TOP/BOTTOM ADJUST	SIDE ADJUST
	min	max						3 Lead-Std. Part Number	3 Lead-Special Part Number	2 Leads Part Number	Part Number
PTFE, * High Temp	2.5 pF	15.0 pF	1500	0 ± 250	-40° to +125°C	.402 / 10.2	Red	GXF15000	GXF15003	GXF15004	GXT15000
	3.0 pF	25.0 pF						GXF25000	GXF25003	GXF25004	GXT25000
	4.0 pF	40.0 pF						GXF40000	GXF40003	GXF40004	GXT40000
	5.5 pF	60.0 pF						GXF60000	GXF60003	GXF60004	GXT60000
	6.0 pF	75.0 pF						GXF75000	GXF75003	GXF75004	GXT75000
	8.0 pF	90.0 pF						GXF90000	GXF90003	GXF90004	GXT90000
PTFE	2.0 pF	13.0 pF	1500	0 ± 400	-40° to +85°C	.402 / 10.2	Blue	GXC13000	GXC13003	GXC13004	GXD13000
	3.0 pF	26.0 pF						GXC26000	GXC26003	GXC26004	GXD26000
	3.5 pF	38.0 pF						GXC38000	GXC38003	GXC38004	GXD38000
	6.0 pF	60.0 pF						GXC60000	GXC60003	GXC60004	GXD60000
	7.0 pF	75.0 pF						GXC75000	GXC75003	GXC75004	GXD75000
	8.0 pF	90.0 pF						GXC90000	GXC90003	GXC90004	GXD90000
	10.0 pF	150.0 pF						GXC15100	GXC15103	GXC15104	N/A
Polypropylene	2.0 pF	15.0 pF	1000	0 ± 400	-40° to +70°C	.402 / 10.2	Blue	GYC15000	GYC15003	GYC15004	GYD15000
	3.0 pF	20.0 pF						GYC20000	GYC20003	GYC20004	GYD20000
	3.5 pF	40.0 pF						GYC40000	GYC40003	GYC40004	GYD40000
	4.5 pF	65.0 pF						GYC65000	GYC65003	GYC65004	GYD65000
Polycarbonate	8.0 pF	80.0 pF	200	0 ± 200	-40° to +85°C	.402 / 10.2	Red	GZC80000	GZC80003	GZC80004	GZD80000
	9.0 pF	100.0 pF						GZC10100	GZC10103	GZC10104	GZD10100
	9.0 pF	120.0 pF									
	10.0 pF	150.0 pF									
	12.0 pF	180.0 pF									

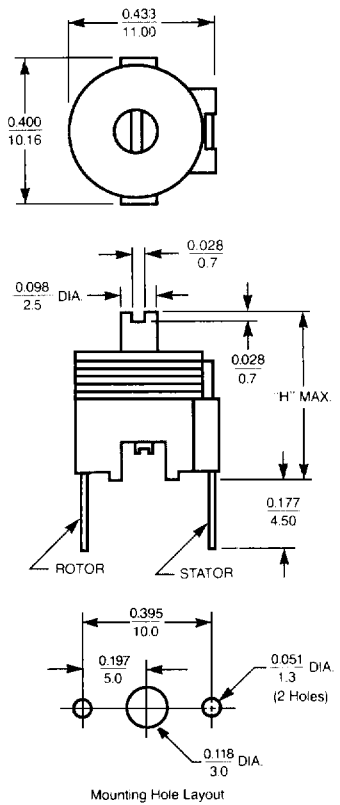
*Gold plated metal parts are standard on GXF and GXT models.



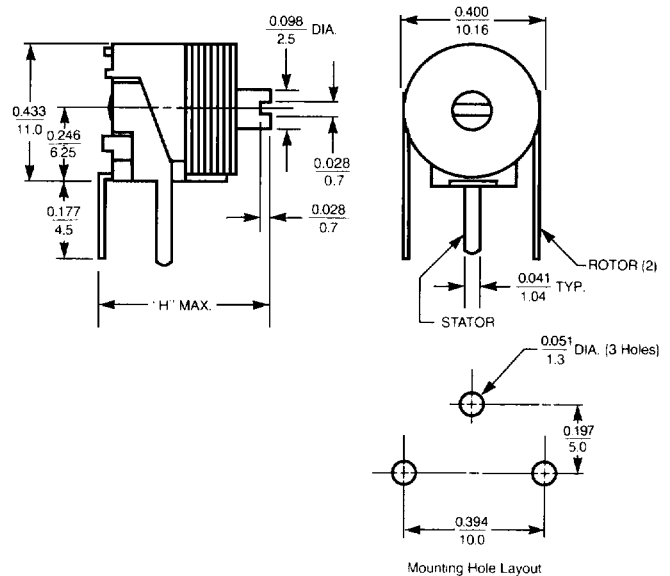
**10 mm TOP & BOTTOM ADJUST
3 LEAD STANDARD**



**10 mm TOP & BOTTOM ADJUST
3 LEAD SPECIAL**



**10 mm TOP & BOTTOM ADJUST
2 LEAD**



10 mm SIDE ADJUST