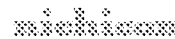
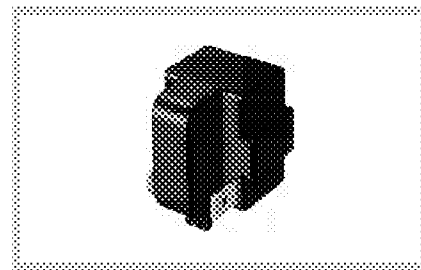


# POSITIVE THERMISTORS "Posi-R"



## For Motor Starting, (Case Type)

This case type Posi-R is ideally suited for motor starting in various home appliances like refrigerators, freezer and home-type air conditioners.



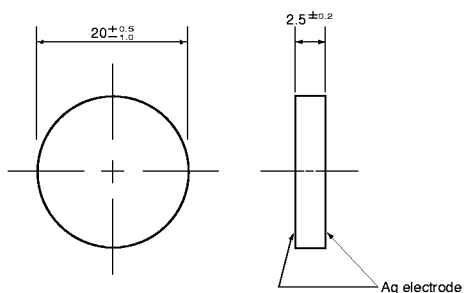
Form of motor starting circuit	RSIR	RSCR	CSR	CSIR
Number of starting circuit	1	2	3	4
Motor starting circuit				

## Specification

Type No.	Initial Resistance	Switching Temperature	Max. Operating Voltage(Vrms)	Max. Inrush Current (Arms)	Max. Consumption Power (W)
ZPM( )TCH4R7B160	4.7Ω ± 30%	135°C	160	10	3.3
ZPM( )TCH6R8B180	6.8Ω ± 30%		180	9	
ZPM( )TCH100B200	10Ω ± 30%		200	8	
ZPM( )TCH150B225	15Ω ± 30%		225	7	
ZPM( )TCH220B250	22Ω ± 30%		250	6	

Symbol ( ) is number of starting circuit.

## For Motor Starting, (Disc Type)



## Specifications

Type No.	Initial Resistance	Switching Temperature	Max. Operating Voltage(Vrms)	Max. Inrush Current (Arms)
ZPD5YCE3R3A	3.3Ω ± 30%	120°C	160	12
ZPD5YCE4R7A	4.7Ω ± 30%		180	12
ZPD5YCE6R8A	6.8Ω ± 30%		200	10
ZPD5YCE100A	10Ω ± 30%		225	9
ZPD5YCE150A	15Ω ± 30%		250	8
ZPD5YCE220A	22Ω ± 30%		270	7
ZPD5YCH3R3A	3.3Ω ± 30%	135°C	140	12
ZPD5YCH4R7A	4.7Ω ± 30%		160	12
ZPD5YCH6R8A	6.8Ω ± 30%		180	10
ZPD5YCH100A	10Ω ± 30%		200	9

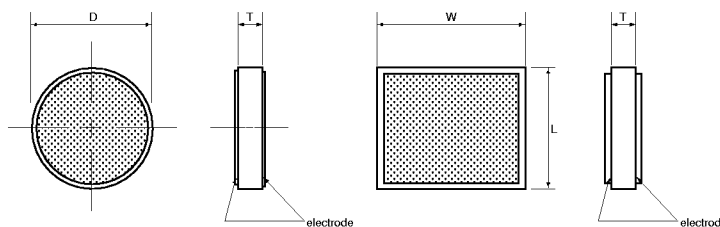
## For Heater

A disc type Posi-R is ideal for a small-power heater, making use of its self-heating and self-equilibrium characteristics. As a Posi-R self-heats when voltage is applied, the size of a heater element and the switching temperature can be optionally selected in accordance with the shape of appliances.

Since this is of a non-contact control type, it is highly reliable for such applications.

Dimensions	Disc type	Square type
	D : φ20mm max. T : 2 ~ 3mm	W : 25mm max. L : 16mm max. T : 1 ~ 3mm

Switching temperature	280°C or lower
Resistance	For 100V : 100Ω or more For 200V : 500Ω or more (Resistance value varies by size.)



Disc type

Square type