

# Zero Standby Power CMOS ZPAL™ Family

# PALC16R8Z-25 Series

## ADVANCE INFORMATION

### Features/Benefits

- CMOS technology provides zero standby power: 100  $\mu$ A max
- Low CMOS operating power
- 28.5 MHz max frequency and 25-ns propagation delay match bipolar speeds
- UV-erasable cell technology provides highest programming and functional yields
- Register preload eases device testing
- Programmable replacement for CMOS/TTL logic
- Instant prototyping and easier board layout
- Reduces chip count by greater than four to one
- Erasable windowed 20-pin package
- Cost effective OTP Plastic DIP package and 20-pin Plastic Leaded Chip Carrier
- Programmed on standard PAL® device programmers
- Security bit prevents duplication by competitors

### Description

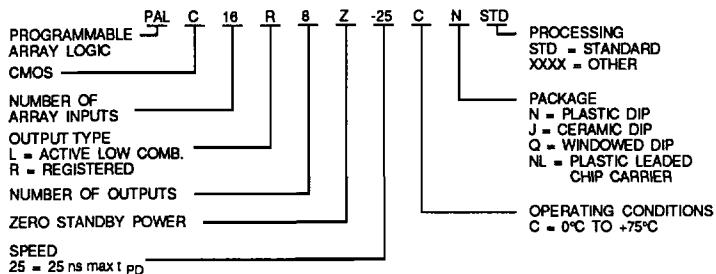
The CMOS PALC16R8Z Series is a CMOS version of the bipolar 20-pin PAL16R8 Series. Monolithic Memories' advanced CMOS technology provides high speed and very low power. Standby power consumption is typically less than 10  $\mu$ A. Active power

### Logic Array Description

PART NUMBER	PKG	LOGIC ARRAY		
		ARRAY INPUTS	OUTPUTS	
			COMB	REG
PALC16L8Z	Q, N J, NL	16	8	—
PALC16R8Z		16	—	8
PALC16R6Z		16	2	6
PALC16R4Z		16	4	4

risers at less than 3 mA per MHz of operating frequency. The PAL16R8 Series is completely pin compatible with the 16L8, 16R8, 16R6, and 16R4 architectures. The PAL 16R8Z Series can thus be used in existing 20-pin PAL device sockets.

### Ordering Information



631 01