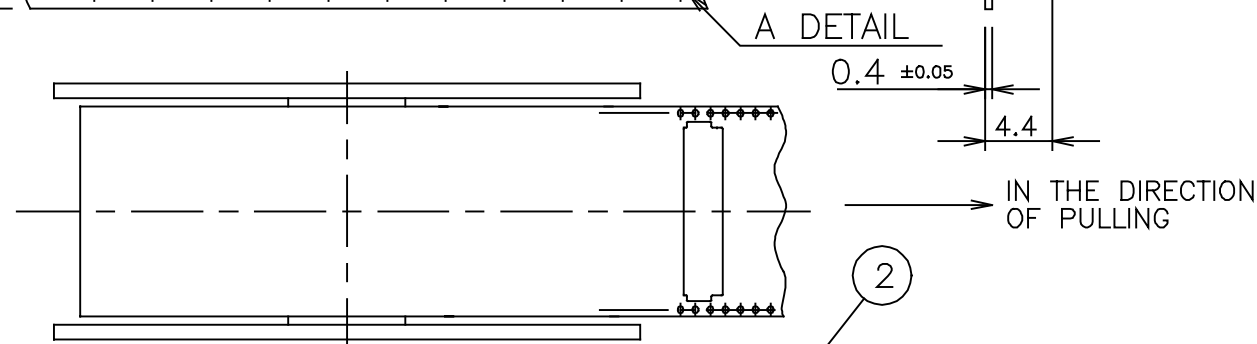
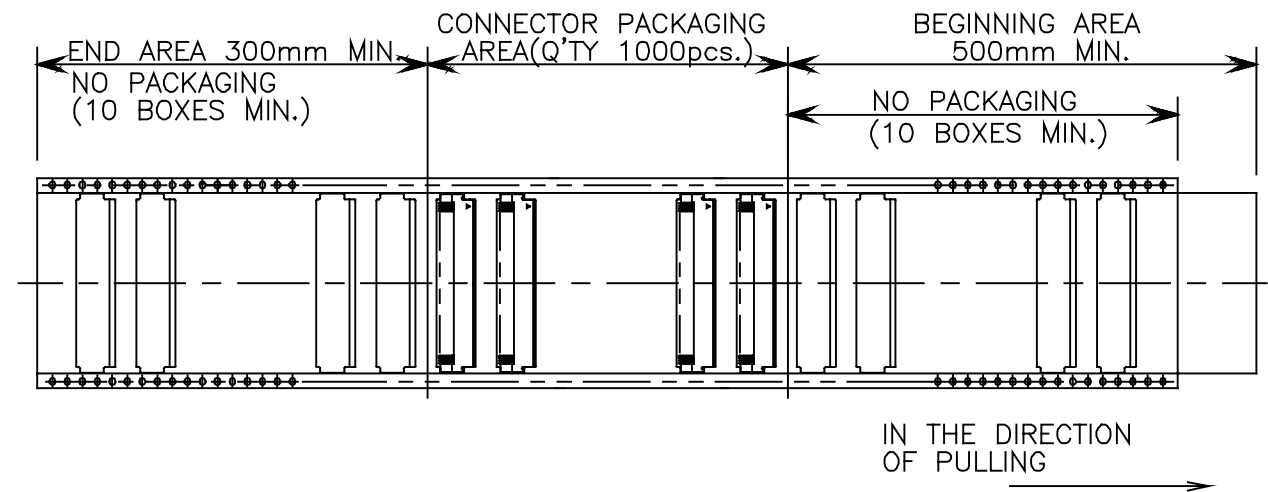


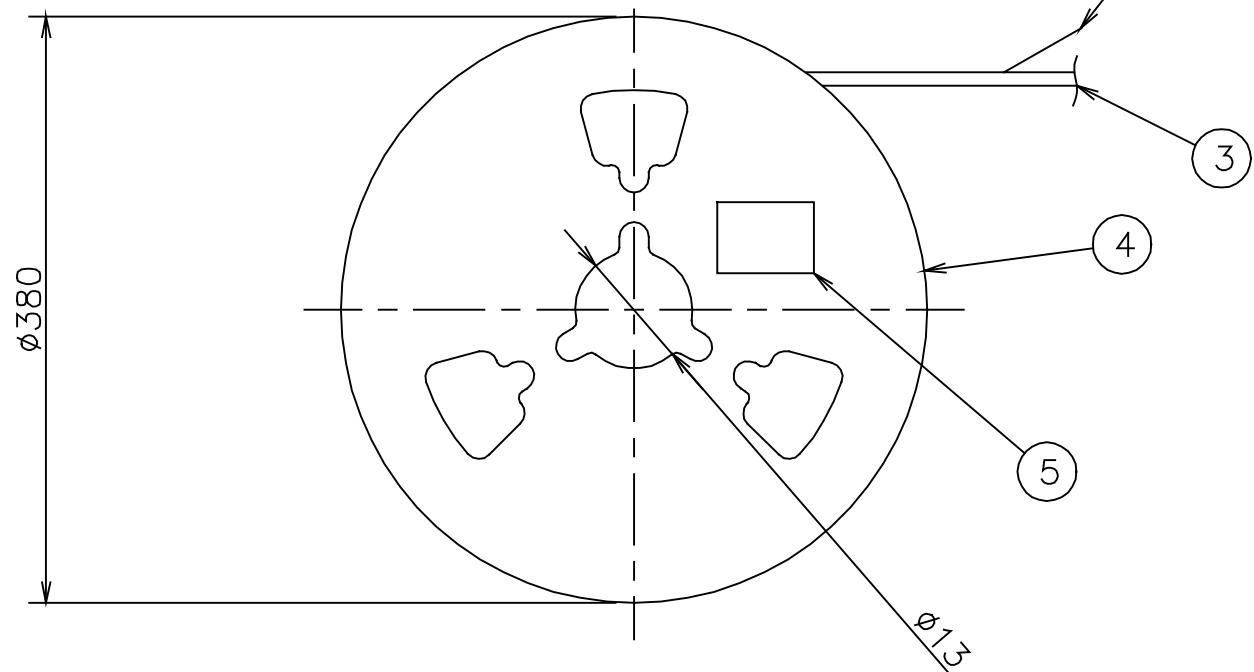
DETAIL A



PART No.	CONNECTOR PART No.	OFFSET DIM.
ICM-68FYC-TP	ICM-68FYC	ZERO
*ICM-68FYC-OM02-TP	ICM-68FYC-OM02	0.2
ICM-68FYC-OM03-TP	ICM-68FYC-OM03	0.3
ICM-68FYC-OM06-TP	ICM-68FYC-OM06	0.6

*THERE CONFIGURATIONS ARE IN THE PLANING STAGE

HONDA
PRINT RM
APR.9.1998
ISSUED



5	LABEL	PAPER	1						
4	REEL	PAPER	1						
3	EMBOSSD TAPE	A PET	1						
2	COVER TAPE	P.E.	1						
1	CONNECTOR		1000						
Δ									
Δ									
Δ	MAY.15 1997	K.,Y	ADD. OFFSET 0.2mm						
LTR.	DATE	BY	REV. DESCRIPT	NO.	PART NAME	MATERIAL	QTY	FINISH	NOTE
	DATE		SCALE	UNIT	3RD . A . P	HONDA TSUSHIN KOGYO., LTD.			
	MAR.26 (1996)		2 / 1	mm(INCH)					
DR.	DE.	CHK.	CHK.	APP.	NAME	ICM-68POS. SOCKET CONNECTOR WITH EMBOSSD TAPE AND REEL			
					PART NO.	ICM-68FYC-()-TP	REV.	1A	

ICM-68FYC-6-TP 'EA