

SPECIFICATIONS

D-SUB Connector

Mechanical

Contact Engagement Force : 0.34 Kgf/ Pin max.
Contact Separation Force : 0.021 Kgf/ Pin min.
Durability : 500 Cycles

Electrical

Voltage Rating: 240V
Current Rating: 1A
Contact Resistance: 25 mW max.
Dielectric Withstanding Voltage: 750V AC/1 min.
Insulation Resistance: 5000MW

Physical

Housing: Thermoplastic, UL 94V-0 rated in Black/ PC99 Color
Contact: Copper alloy
Plating: See "ORDERING INFORMATION"
Solder Pad: Copper alloy
Operating Temperature: -55 to +105

DZ Series

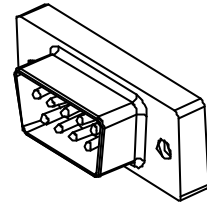
Right Angle, T/H, Male Type

9 Pos.

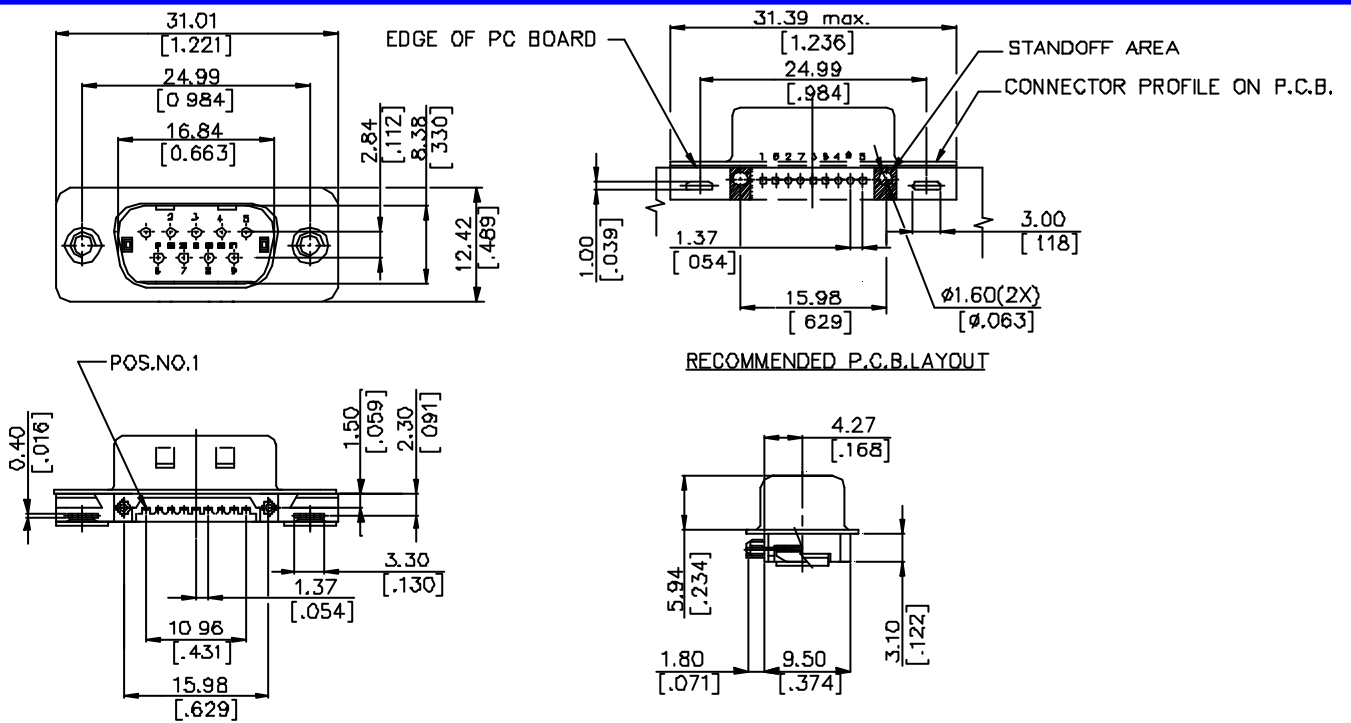
Center Height 4.27 mm

Recommended PCB's

Thickness 1.0 or 1.2 mm



DRAWING



ORDERING INFORMATION

PRODUCT NO. : DZ 1 0 1 9 * -H* -WH* - (HT/TR)

D-SUB Through Hole Series

Terminator Type
 1 = Right Angle

Contact Design Type
 0 = Male

NO. of Contact Position
 1 = 9 POS.

Packing Code

Extension Code

Contact Area Plating

1= Gold Flash
 6= 10u" Gold
 7= 15u" Gold

Body Length

DZ1019*-WH7	REAL
DZ1019*-H7	BLACK
P/N	COLOR