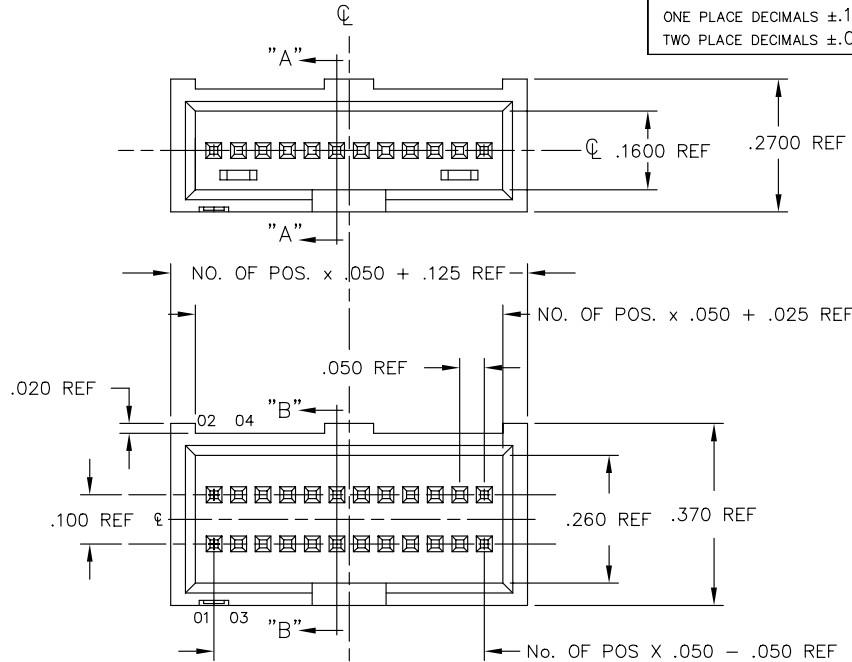


DIMENSIONS ARE IN INCHES		UNLESS OTHERWISE NOTED		TITLE:	DWG NO:
TOLERANCES ARE:		ANGLES ± 2°		ZML ASSEMBLY	ZML-1XX-XX-XX-X
ONE PLACE DECIMALS ±.1	THREE PLACE DECIMALS ± .005			SHEET 1 OF 1	
TWO PLACE DECIMALS ±.01	FOUR PLACE DECIMALS ± .0020				



ZML-1XX-XX-XX-X

NO. OF POSITIONS  
-05 THRU -50

LEAD STYLE  
SEE TABLE 2

ROW SPECIFICATION  
-D: DOUBLE (USE TML-XX-D-LC & HTMS-50-D)  
-S: SINGLE (USE TML-XX-S & HTMS-50-S)

PLATING SPECIFICATION

- G: GOLD- (SEE T-1M6-XX-G-2)
- S: SELECTIVE- (SEE T-1M6-XX-S-2)
- H: HEAVY GOLD- (SEE T-1M6-XX-H-2)
- T: SEE NOTE 2
- TM: MATTE TIN (SEE T-1M6-XX-TM-2)
- SM: SELECTIVE GOLD/MATTE TIN TAIL (SEE T-1M6-XX-SM-2)

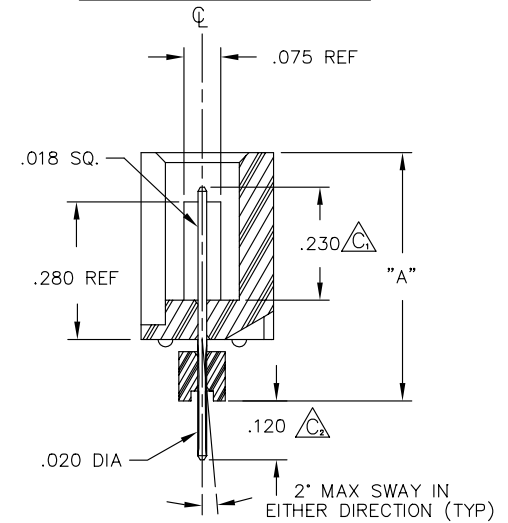
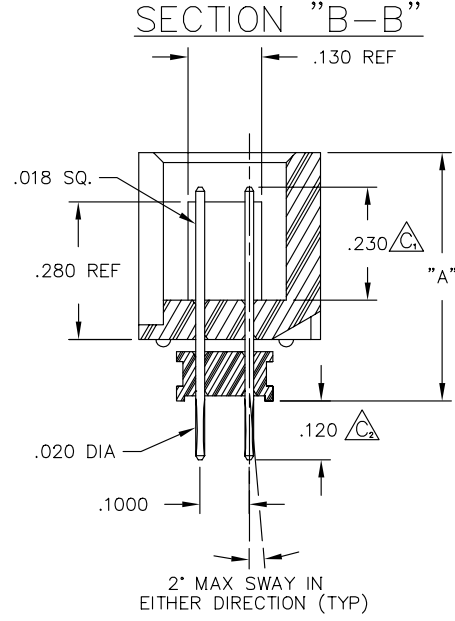
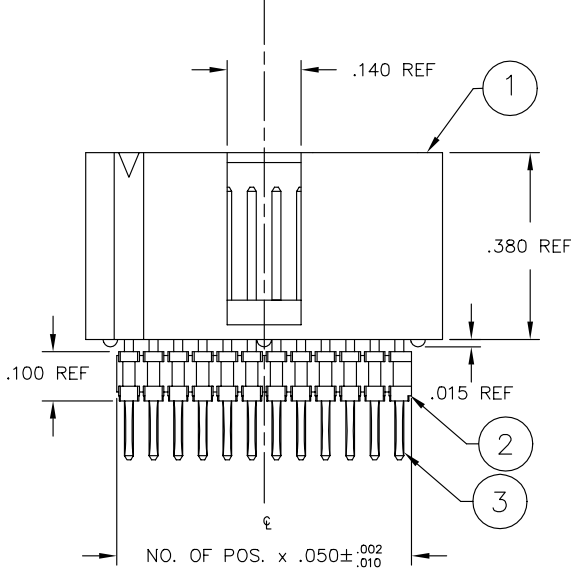
TABLE 1

1	TML-XX-X-XX
2	HTMS-50-X
3	T-1M6-XX-XX-2

TABLE 2

LEAD STYLE	TERMINAL	"A"
-01	T-1M6-14-XX-2	.505
-02	T-1M6-03-XX-2	.560
-03	T-1M6-05-XX-2	.655
-04	T-1M6-16-XX-2	.775

DO NOT SCALE FROM THIS PRINT



NOTES:

- 1.)  $\triangle$  REPRESENTS A CRITICAL DIMENSION FOR STATISTICAL PROCESS CONTROL USE.
- 2.) TIN PLATING SUPPORTED FOR EXISTING CUSTOMERS ONLY.

**PROPRIETARY NOTE**  
THIS DOCUMENT CONTAINS INFORMATION CONFIDENTIAL AND PROPRIETARY TO SAMTEC INC. AND SHALL NOT BE REPRODUCED OR TRANSFERRED TO OTHER DOCUMENTS OR DISCLOSED TO OTHERS OR USED FOR ANY PURPOSE OTHER THAN THAT FOR WHICH IT WAS OBTAINED WITHOUT THE EXPRESSED WRITTEN CONSENT OF SAMTEC INC.

PLOT SCALE 1=2

EXISPROD\ASSEMBLY\050  
ZML-ASM

**samtec**

520 PARK EAST BLVD. NEW ALBANY, INDIANA 47150  
PHONE (812) 944-6733 P.O. BOX 1147  
CODE 55322

MADE BY: GREG REIDINGER 4-4-91	ENG. APPROVAL: PAE	ZML-1XX-XX-XX-X
CHECKED BY: ECKERT		SHEET 1 OF 1