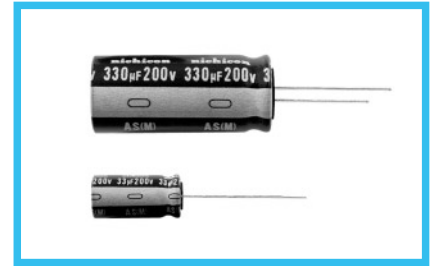
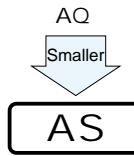


AS

Wide Temperature Range, Miniature Type Permissible
Abnormal Voltage
series

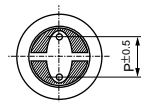
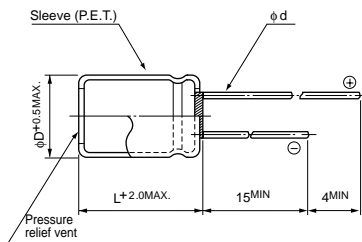


- Improved safety feature for abnormally excessive voltage.
- High ripple current product.
- Compliant to the RoHS directive (2002/95/EC).

Specifications

Item	Performance Characteristics											
Category Temperature Range	-40 to +105°C											
Rated Voltage Range	200V											
Rated Capacitance Range	33 to 330μF											
Capacitance Tolerance	±20% at 120Hz, 20°C											
Leakage Current	After 1 minute's application of rated voltage, leakage current is 0.04CV+100 (μA) or less.											
Tangent of loss angle (tan δ)	<table><tr><td>Rated voltage (V)</td><td>200</td></tr><tr><td>tan δ (MAX.)</td><td>0.15</td></tr></table>	Rated voltage (V)	200	tan δ (MAX.)	0.15	Measurement frequency:120Hz, Temperature:20°C						
Rated voltage (V)	200											
tan δ (MAX.)	0.15											
Stability at Low Temperature	<table><tr><td colspan="2">Rated voltage (V)</td><td>200</td><td rowspan="3">Measurement frequency : 120Hz</td></tr><tr><td rowspan="2">Impedance ratio ZT / Z20 (MAX.)</td><td>Z-25°C / Z+20°C</td><td>3</td></tr><tr><td>Z-40°C / Z+20°C</td><td>6</td></tr></table>	Rated voltage (V)		200	Measurement frequency : 120Hz	Impedance ratio ZT / Z20 (MAX.)	Z-25°C / Z+20°C	3	Z-40°C / Z+20°C	6		
Rated voltage (V)		200	Measurement frequency : 120Hz									
Impedance ratio ZT / Z20 (MAX.)	Z-25°C / Z+20°C	3										
	Z-40°C / Z+20°C	6										
Endurance	The specifications listed at right shall be met when the capacitors are restored to 20°C after D.C. bias plus rated ripple current is applied for 2000 hours at 105°C, the peak voltage shall not exceed the rated voltage.		<table><tr><td>Capacitance change</td><td>Within ±20% of the initial capacitance value</td></tr><tr><td>tan δ</td><td>200% or less than the initial specified value</td></tr><tr><td>Leakage current</td><td>Less than or equal to the initial specified value</td></tr></table>		Capacitance change	Within ±20% of the initial capacitance value	tan δ	200% or less than the initial specified value	Leakage current	Less than or equal to the initial specified value		
Capacitance change	Within ±20% of the initial capacitance value											
tan δ	200% or less than the initial specified value											
Leakage current	Less than or equal to the initial specified value											
Shelf Life	After leaving capacitors under no load at 105°C for 1000 hours they shall meet the specified values for the endurance characteristics listed above.											
Safety Performance	The pressure relief vent will operate in normal conditions, with no dangerous conditons such as flames, ignitions or dispersion of pieces of the capacitor and / or case.											
	voltage (V)	Test conditions										
		Limited DC current	Test Voltage									
	200	4A (5A : 330μF)	300VDC and 375VDC									
Marking	Printed with white color letter on dark brown sleeve.											

Radial Lead Type



	10	12.5	16	18
φD	10	12.5	16	18
P	5.0	5.0	7.5	7.5
φd	0.6	0.6 ^(*)	0.8	0.8

※ In case L>25 for φ12.5 (D) case sizes, lead diameter φ0.8 (d) will be applied.

- Please refer to page 20 about the end seal configuration.

Type numbering system (Example : 200V 220µF)

1	2	3	4	5	6	7	8	9	10	11	12
U	A	S	2	D	2	2	1	M	H	D	
											Size code
											Configuration※
											Capacitance tolerance (±20%)
											Rated capacitance (220µF)
											Rated voltage (200V)
											Series name
											Type

※ Configuration

φ D	Pb-free leadwire Pb-free PET sleeve
10	PD
12.5 to 18	HD

Dimensions

V		200 (2D)							
Cap. (µF)	Code	φ10		φ12.5		φ16		φ18	
33	330	10 × 20	160					Case size φD × L (mm)	Rated ripple
47	470	10 × 25	195	▲12.5 × 20	195				
56	560			12.5 × 20	210				
68	680			12.5 × 25	320				
82	820			12.5 × 25	360				
100	101			12.5 × 31.5	430	▲16 × 20	430		
150	151					16 × 25	460	▲18 × 20	460
180	181					16 × 31.5	600	▲18 × 25	600
220	221							18 × 31.5	710
270	271							18 × 35.5	890
330	331							18 × 40	910

Rated ripple current (mArms) at 105°C 120Hz

▲: In this case, [6] will be put at 12th digit of type numbering system.

Frequency coefficient of rated ripple current

Frequency	50, 60Hz	120Hz	300Hz	1kHz	10kHz or more
Coefficient	0.80	1.00	1.25	1.40	1.60

Please refer to page 20, 21, 22 about the formed or taped product spec.
Please refer to page 4 for the minimum order quantity.

CAT.8100Y