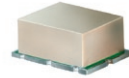


# Surface Mount Phase Detector

# SYPD-1+ SYPD-1

50Ω High Output 1 to 100 MHz



## Maximum Ratings

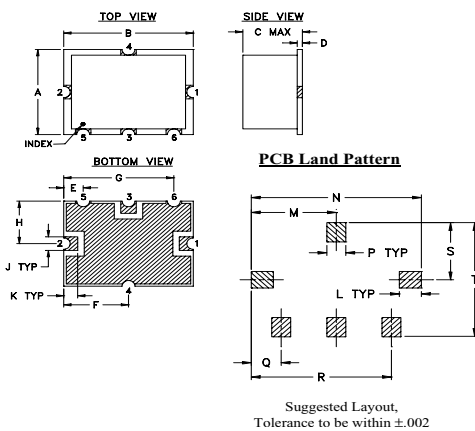
Operating Temperature	-40°C to 85°C
Storage Temperature	-55°C to 100°C
Input Power	50mW
Peak IF current	20mA

Permanent damage may occur if any of these limits are exceeded.

## Pin Connections

RF REF (RF2)	2
RF IN (RF1)	1
DC OUT (I)	3
GROUND	4,5,6

## Outline Drawing



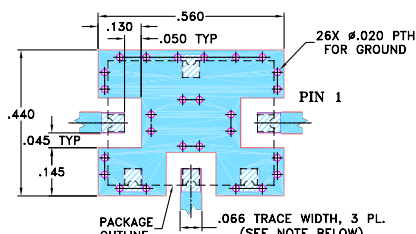
## Outline Dimensions (inch/mm)

A	B	C	D	E	F	G	H	J	K
.38	.50	.23	.020	.075	.250	.425	.187	.050	.050
9.65	12.70	5.84	0.51	1.91	6.35	10.80	4.75	1.27	1.27

L	M	N	P	Q	R	S	T	wt.
.070	.270	.540	.060	.095	.445	.208	.415	grams
1.78	6.86	13.72	1.52	2.41	11.30	5.28	10.54	0.8

## Demo Board MCL P/N: TB-12 Suggested PCB Layout (PL-079)



- NOTE: 1. TRACE WIDTH IS SHOWN FOR ROGERS RO4350B WITH DIELECTRIC THICKNESS .030" ± .002"; COPPER: 1/2 OZ. EACH SIDE. FOR OTHER MATERIALS TRACE WIDTH MAY NEED TO BE MODIFIED.  
2. GROUND PAD SHALL BE FREE OF SOLDER MASK IF REQUIRED FOR SOLDERING.  
3. BOTTOM SIDE OF THE PCB IS CONTINUOUS GROUND PLANE.
- DENOTES PCB COPPER LAYOUT WITH SMOBC (SOLDER MASK OVER BARE COPPER), SEE NOTE 2.
  - DENOTES COPPER LAND PATTERN FREE OF SOLDER MASK

## Features

- wideband, 1 to 100 MHz
- low DC offset, 0.2 mV typ.
- high DC output, 1000 mV typ.
- high isolation, 40 dB min.

## Applications

- monitoring circuits
- leveling circuits
- PLL

CASE STYLE: TTT167  
PRICE: \$14.95 ea. QTY (1-9)

+ RoHS compliant in accordance with EU Directive (2002/95/EC)

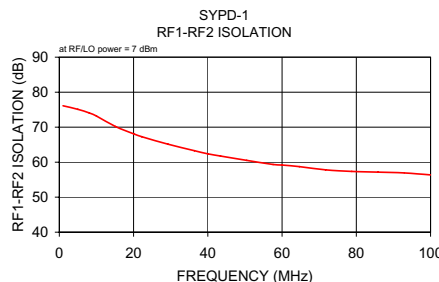
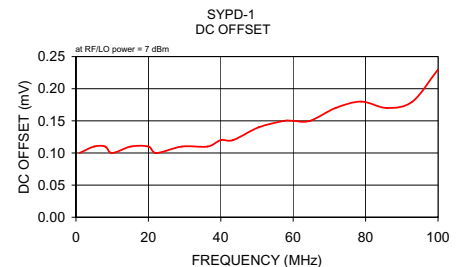
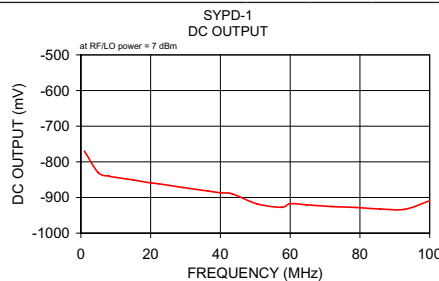
The +Suffix identifies RoHS Compliance. See our web site for RoHS Compliance methodologies and qualifications.

## Phase Detector Electrical Specifications

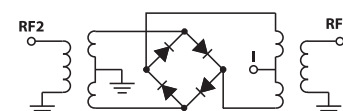
FREQUENCY (MHz)	POWER IN (RF1, RF2)	SCALE FACTOR (mV/deg.)	IMPEDANCE (ohms)	ISOLATION (dB)	OUTPUT POLARITY	DC OUTPUT (mV)		FIGURE OF MERIT			
						Max. Typ.	Offset Typ. Max.				
1-100	DC-50	7	8	500	40	neg.	1000	700	0.2	1	143

## Typical Performance Data

Frequency (MHz)	DC Output mV		DC Offset mV		RF1-RF2 Isolation (dB)
	$\bar{X}$	$\sigma$	$\bar{X}$	$\sigma$	$\bar{X}$
1.00	-769.98	14.85	0.10	0.16	76.12
5.00	-830.34	8.90	0.11	0.18	75.09
8.07	-840.24	14.44	0.11	0.18	74.07
10.00	-843.71	14.61	0.10	0.18	73.19
15.14	-851.12	17.01	0.11	0.19	70.19
20.00	-859.20	18.91	0.11	0.19	68.10
22.21	-861.26	20.52	0.10	0.20	67.28
29.29	-872.02	22.55	0.11	0.21	65.14
36.36	-881.57	24.77	0.11	0.22	63.29
40.00	-886.86	25.39	0.12	0.23	62.38
43.43	-889.93	26.41	0.12	0.23	61.76
50.50	-917.82	25.99	0.14	0.25	60.51
57.57	-927.50	28.69	0.15	0.27	59.35
60.00	-917.14	33.08	0.15	0.26	59.18
64.64	-920.62	38.60	0.15	0.27	58.73
71.71	-925.22	45.18	0.17	0.31	57.82
78.79	-928.03	51.83	0.18	0.31	57.35
85.86	-932.34	57.31	0.17	0.31	57.15
92.93	-932.98	60.65	0.18	0.38	56.93
100.00	-909.17	74.27	0.23	0.43	56.36



## electrical schematic



**Mini-Circuits**  
ISO 9001 ISO 14001 AS 9100 CERTIFIED

For detailed performance specs & shopping online see web site

P.O. Box 350166, Brooklyn, New York 11235-0003 (718) 934-4500 Fax (718) 332-4661 The Design Engineers Search Engine Provides ACTUAL Data Instantly at [minicircuits.com](http://minicircuits.com)

IF/RF MICROWAVE COMPONENTS

Notes: 1. Performance and quality attributes and conditions not expressly stated in this specification sheet are intended to be excluded and do not form a part of this specification sheet. 2. Electrical specifications and performance data contained herein are based on Mini-Circuits' applicable established test performance criteria and measurement instructions. 3. The parts covered by this specification sheet are subject to Mini-Circuits standard limited warranty and terms and conditions (collectively, "Standard Terms"); Purchasers of this part are entitled to the rights and benefits contained therein. For a full statement of the Standard Terms and the exclusive rights and remedies thereunder, please visit Mini-Circuits' website at [www.minicircuits.com/MCLStore/terms.jsp](http://www.minicircuits.com/MCLStore/terms.jsp).

REV. A  
M112207  
SYPD-1  
DJ/TD/AM  
070810