



# T1<sup>3/4</sup> (5mm) TRICOLOR PCB LEDs

3 LEADED RIGHT ANGLE

PART NO:

**PCT300TWRG4-3C-T**

MODEL	LENS, COLOR, BRIGHT	LED COLOR (CLEAR LENS)	LED SPECS USED	ELECTRO-OPTICAL CHARACTERISTICS T <sub>a</sub> =25°C I <sub>r</sub> =100µA(MAX)				FEATURES
				I <sub>f</sub> mA typ	I <sub>v</sub> mcd min/typ	V <sub>f</sub> typ/max	λ P nm	
<b>T1-3/4 (5mm) 3 LEADED RIGHT ANGLE LEDs COMMON ANODE</b>								
PC300	TWRG3	Gap RFD	L200TWRG3-3A	20	1.5/3.0	2.0/2.8	700	3A=COMMON ANODE 3C=COMMON CATHODE
PCT300		HI-EFF GREEN		20	3.0/6.0	2.1/2.8	568	
SM300	IWRG4B	HI-EFF RED	L200IWRG4B-3A	20	5.0/6.0	2.0/2.8	635	T = TAB BLANK = NO TAB
		HI-EFF GREEN		20	2.1/2.8	2.1/2.8	568	
	YELLOW	L200TWYG4-3C	20	2.1/2.8	2.1/2.8	585		
	HI-EFF GREEN		20	2.1/2.8	2.1/2.8	568		
	TWYG4	YELLOW	L200TWYG4-3C	20	2.1/2.8	2.1/2.8	585	
	TWYG4B	HI-EFF GREEN	L200TWYG4B-3A	20	2.1/2.8	2.1/2.8	568	
		YELLOW		20	2.1/2.8	2.1/2.8	585	
		HI-EFF GREEN		20	2.1/2.8	2.1/2.8	568	

<b>T1-3/4 (5mm) 3 LEADED RIGHT ANGLE LEDs COMMON CATHODE</b>								
PC300	IWRG3	HI-EFF RFD	L200IWRG3-3C	20	3.0/6.0	2.1/2.8	635	3A=COMMON ANODE 3C=COMMON CATHODE
PCT300		HI-EFF GREEN		20	2.5/6.5	2.1/2.8	568	
SM300	IWOC4	ORANGE	L200IWOC4-3C	20	2.5/6.5	2.1/2.8	610	T = TAB BLANK = NO TAB
		HI-EFF GREEN		20	2.5/6.5	2.1/2.8	585	
	HI-EFF RED	L200TWRG4B-3C	20	3.0/6.0	2.1/2.8	635		
	HI-EFF GREEN		20	2.5/6.5	2.1/2.8	568		
	TWRG4B	HI-EFF RED	L200TWRG4B-3C	20	3.0/6.0	2.1/2.8	635	
		HI-EFF GREEN		20	2.5/6.5	2.1/2.8	568	
	TWRY4B	HI-EFF RED	L200TWRY4B-3C	20	3.0/6.0	2.1/2.8	635	
		YELLOW		20	2.5/5.0	2.1/2.8	585	
	IWYG4B	YELLOW	L200IWYG4B-3C	20	2.5/5.0	2.1/2.8	585	
		HI-EFF GREEN		20	2.5/6.5	2.1/2.8	568	
	CWRG5	ULTRA RED	L200CWRG5-3C	20	15.0/30.0	2.1/2.8	655	
		ULTRA GREEN		20	30.0/60.0	2.1/2.8	568	

I<sub>opr</sub> = 30°C TO 85°C  
T<sub>stg</sub> = 30°C TO 100°C

Jctn/Cath Temp. 145°C/Watt  
Lead Soldering Temp. 260°C max., 5 sec.  
1/16" (1.6mm) from body

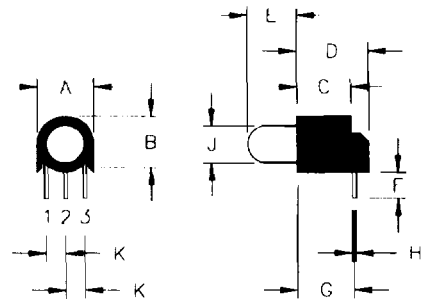
## NOTES:

- MODEL PCT300 AVAILABLE IN THE FOLLOWING PART NUMBERS ONLY:  
PCT300TWRG4-3A  
PCT300TWYG4-3C
- LEAD 1 = COMMON ANODE, LEAD 2 = RED (YELLOW) CATHODE,  
LEAD 3 = GREEN CATHODE
- LEAD 1 = RED (ORANGE, YELLOW) ANODE, LEAD 2 = COMMON CATHODE,  
LEAD 3 = GREEN (YELLOW) ANODE
- LEAD 1 = YELLOW CATHODE, LEAD 2 = COMMON ANODE,  
LEAD 3 = GREEN CATHODE

## MECHANICAL SPECIFICATIONS

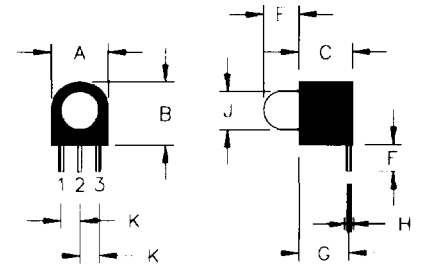
MODEL	A (mm)	B (mm)	C (mm)	D (mm)	E (mm)	F (mm)	G (mm)	H (mm)	J (mm)	K (mm)
PCT300	.295" (7.49)	.300" (7.62)	.280" (7.11)	.375" (9.53)	.256" (6.50)	.140" (3.56)	.295" (7.49)	.020" (0.50)	.197" (5.00)	.094" (2.39)
PC300	.295" (7.49)	.325" (8.26)	.280" (7.11)	—	.183" (4.65)	.140" (3.56)	.260" (6.60)	.020" (0.50)	.197" (5.00)	.094" (2.39)
PC300 W/TAB	.295" (7.49)	.325" (8.26)	.280" (7.11)	.150" (3.81)	.183" (4.65)	.140" (3.56)	.260" (6.60)	.020" (0.50)	.197" (5.00)	.094" (2.39)
SM300 W/TAB	.295" (7.49)	.325" (8.26)	.280" (7.11)	.150" (3.81)	.183" (4.65)	.100" (2.54)	—	.020" (0.50)	.197" (5.00)	.094" (2.39)

PCT300 (SEE NOTE 1)



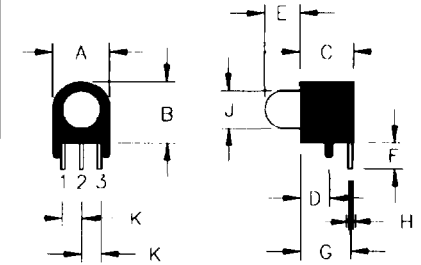
SEE NOTE 2

PC300 WITHOUT TAB



SEE NOTE 3

PCT300 WITH TAB



SEE NOTE 4

TAB DIMENSIONS .039" DIA x .079"

SM300 WITH TAB

