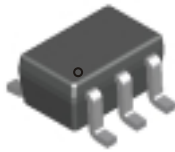
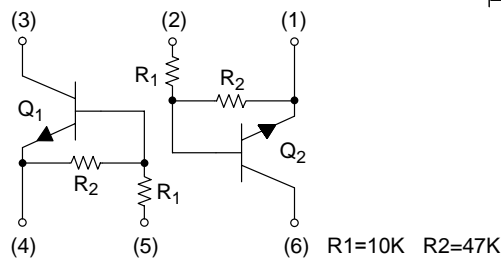


RoHS Compliant Product

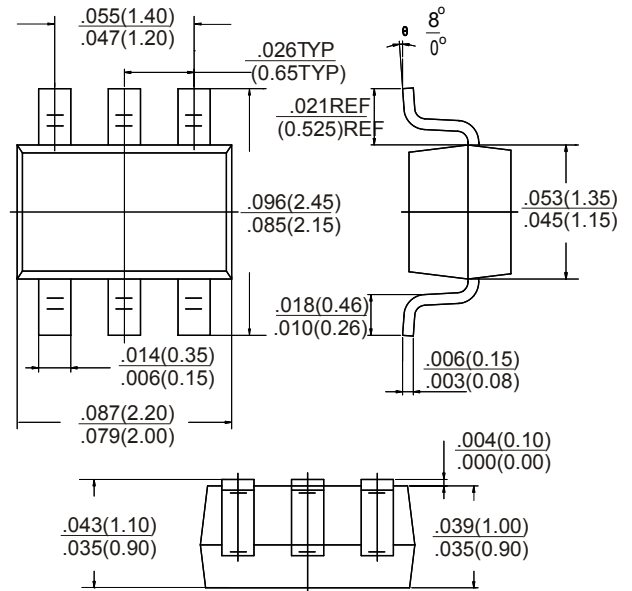


*** Features**

- * Mounting possible with 3 automatic mounting machines.
- * Transistor elements are independent, eliminating interference.
- * Mounting cost and area can be cut in half.



SOT-363



Absolute maximum ratings (Ta=25°C)

Parameter	Symbol	Limits	Unit
Supply voltage	V _{CC}	50	V
Input voltage	V _{IN}	-6~40	V
Output current	I _O	70	mA
	I _{C(MAX)}	100	
Power dissipation	P _d	150(TOTAL)	mW
Junction temperature	T _j	150	°C
Storage temperature	T _{stg}	-55~150	°C

Electrical characteristics (Ta=25°C)

Parameter	Symbol	Min.	Typ	Max.	Unit	Conditions
Input voltage	V _{I(off)}			0.3	V	V _{CC} =5V, I _O =100 μA
	V _{I(on)}	1.4				V _O =0.3V, I _O =1 mA
Output voltage	V _{O(on)}			0.3	V	I _O /I _I =5mA/0.25mA
Input current	I _I			0.88	mA	V _I =5V
Output current	I _{O(off)}			0.5	μA	V _{CC} =50V, V _I =0
DC current gain	G _I	68				V _O =5V, I _O =5mA
Input resistance	R ₁	7	10	13	KΩ	
Resistance ratio	R ₂ /R ₁	3.7	4.7	5.7		
Transition frequency	f _T		250		MHz	V _{CE} =10V, I _E =-5mA, f=100MHz

● Electrical characteristic curves

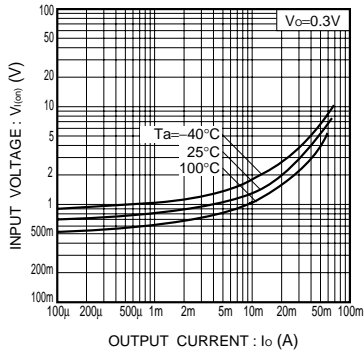


Fig.1 Input voltage vs. output current (ON characteristics)

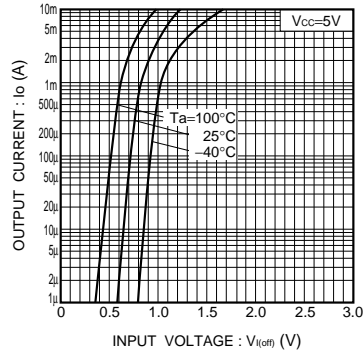


Fig.2 Output current vs. input voltage (OFF characteristics)

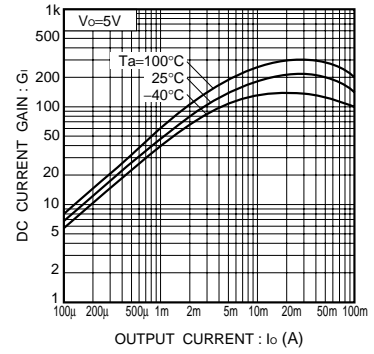


Fig.3 DC current gain vs. output current

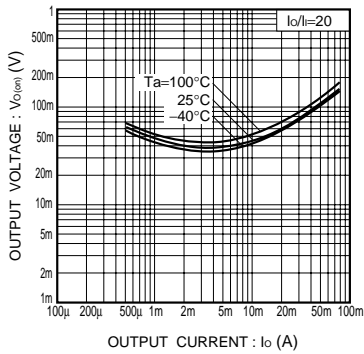


Fig.4 Output voltage vs. output current