

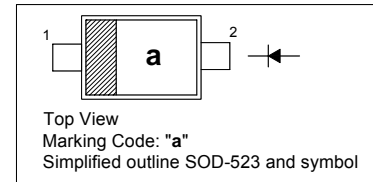
High Voltage Switching Diode

Applications

- high speed switching
- high voltage switching

PINNING

PIN	DESCRIPTION
1	Cathode
2	Anode

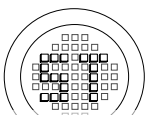


Absolute Maximum Ratings (T_a = 25 °C)

Parameter	Symbol	Value	Unit
Repetitive Peak Reverse Voltage	V _{RRM}	300	V
Reverse Voltage	V _R	300	V
Continuous Forward Current	I _F	225	mA
Repetitive Peak Forward Current	I _{FRM}	625	mA
Non-Repetitive Peak Forward Current (1 μs)	I _{FSM}	4	A
Power Dissipation	P _{tot}	250	mW
Junction Temperature	T _J	150	°C
Storage Temperature Range	T _s	- 65 to + 150	°C

Characteristics at T_a = 25 °C

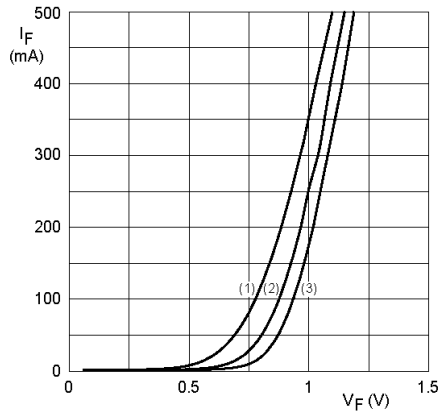
Parameter	Symbol	Min.	Max.	Unit
Forward Voltage at I _F = 100 mA	V _F	-	1.1	V
Reverse Breakdown Voltage at I _R = 100 μA	V _{(BR)R}	300	-	V
Reverse Current at V _R = 250 V	I _R	-	150	nA
Reverse Recovery Time at I _F = I _R = 30 mA, R _L = 100 Ω, i _{rr} = 0.1 I _R	t _{rr}	-	50	ns
Total Capacitance at V _R = 0 V, f = 1 MHz	C _T	-	5	pF



SEMTECH ELECTRONICS LTD.

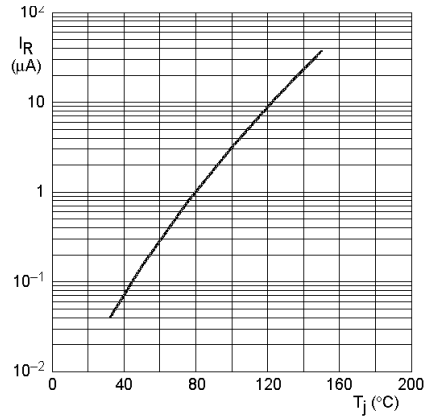
(Subsidiary of Sino-Tech International Holdings Limited, a company listed on the Hong Kong Stock Exchange, Stock Code: 724)





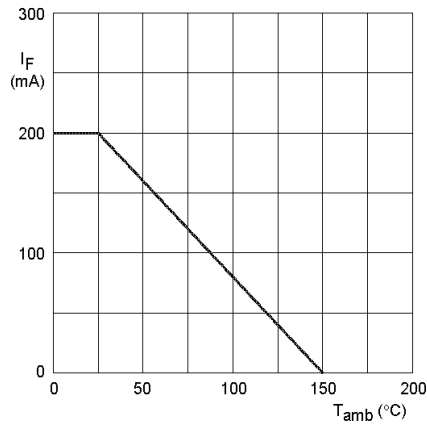
- (1) $T_{amb} = 150\text{ }^{\circ}\text{C}$.
- (2) $T_{amb} = 75\text{ }^{\circ}\text{C}$.
- (3) $T_{amb} = 25\text{ }^{\circ}\text{C}$.

Forward current as a function of forward voltage; typical values.

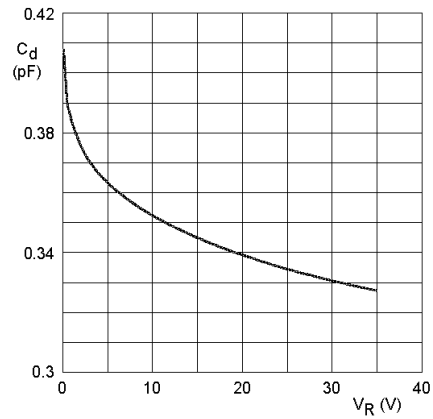


$V_R = V_{Rmax}$; typical values.

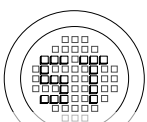
Reverse current as a function of junction temperature.



Maximum permissible continuous forward current as a function of ambient temperature.



Diode capacitance as a function of reverse voltage; typical values.



SEMTECH ELECTRONICS LTD.

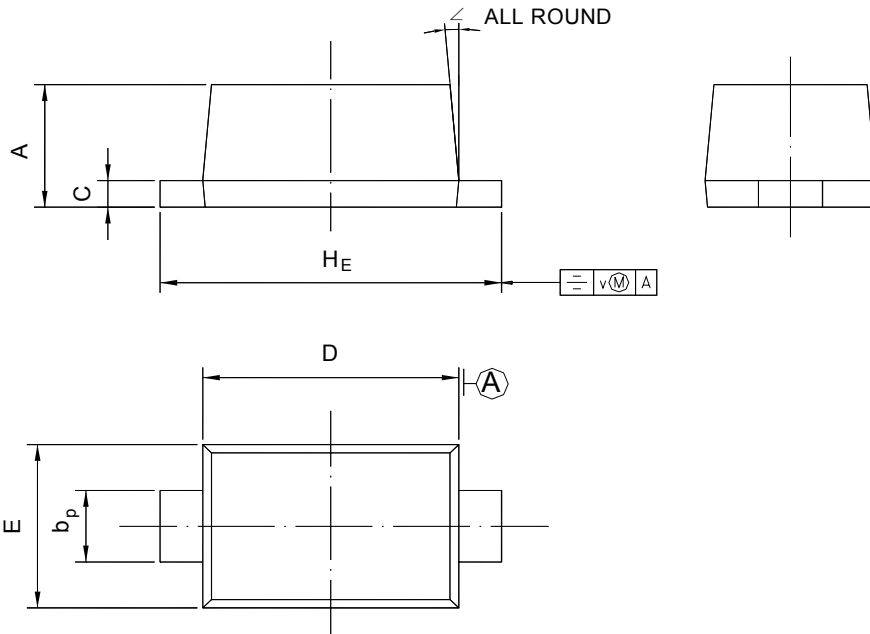
(Subsidiary of Sino-Tech International Holdings Limited, a company listed on the Hong Kong Stock Exchange, Stock Code: 724)



PACKAGE OUTLINE

Plastic surface mounted package; 2 leads

SOD-523



UNIT	A	b_p	C	D	E	H_E	V	\angle
mm	0.70 0.60	0.4 0.3	0.135 0.127	1.25 1.15	0.85 0.75	1.7 1.5	0.1	5°