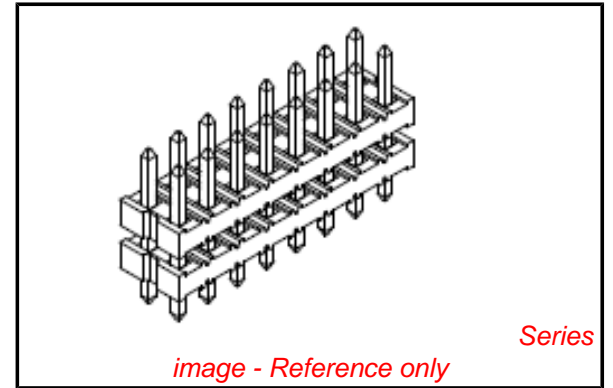


**PLEASE CHECK WWW.MOLEX.COM FOR LATEST PART INFORMATION**

**Part Number:** [0877612001](#)  
**Status:** **Active**  
**Overview:** milligrd  
**Description:** 2.00mm (.079") Pitch Milli-Grid™ Header, Dual Row Dual Body, Through Hole, Vertical, 20 Circuits, 0.75µm (30µ") Gold (Au) Selective Plating, 14.50mm (.571") Stacking Height, Tray Packaging, Lead-free

**Documents:**

[Drawing \(PDF\)](#) [RoHS Certificate of Compliance \(PDF\)](#)  
[Product Specification PS-87761-100 \(PDF\)](#)



**General**

Product Family	PCB Headers
Series	<a href="#">87761</a>
Application	Board-to-Board
Overview	<a href="#">milligrd</a>
Product Name	Dual Body, Milli-Grid™

**Physical**

Breakaway	Yes
Circuits (Loaded)	20
Circuits (maximum)	20
Color - Resin	Black
First Mate / Last Break	No
Glow-Wire Compliant	No
Guide to Mating Part	No
Keying to Mating Part	None
Lock to Mating Part	None
Mated Height (in)	0.098 In
Mated Height (mm)	2.50 mm
Material - Metal	Copper Alloy
Material - Plating Mating	Gold
Material - Plating Termination	Tin
Material - Resin	Nylon
Number of Rows	2
Orientation	Vertical
PCB Locator	No
PCB Retention	None
Packaging Type	Tray
Pitch - Mating Interface (in)	0.079 In
Pitch - Mating Interface (mm)	2.00 mm
Pitch - Term. Interface (in)	0.079 In
Pitch - Term. Interface (mm)	2.00 mm
Plating min: Mating (µin)	30
Plating min: Mating (µm)	0.75
Plating min: Termination (µin)	79
Plating min: Termination (µm)	2.00
Polarized to Mating Part	No
Polarized to PCB	No
Robotic Placement	None
Shrouded	No
Stackable	No
Temperature Range - Operating	-55°C to +105°C
Termination Interface: Style	Through Hole

**Electrical**

**EU RoHS**

**ELV and RoHS  
Compliant**  
**REACH SVHC  
Not Reviewed**  
**Halogen-Free  
Status  
Not Reviewed**

**China RoHS**



**Need more information on product  
environmental compliance?**

Email [productcompliance@molex.com](mailto:productcompliance@molex.com)  
 For a multiple part number RoHS Certificate of Compliance, [click here](#)

Please visit the [Contact Us](#) section for any non-product compliance questions.

**Search Parts in this Series**

[87761Series](#)

**Mates With**

[79109 Board-to-Board Top/Bottom Entry  
SMT Receptacle](#)

Current - Maximum per Contact  
Voltage - Maximum

2A  
125V

**Material Info**

**Reference - Drawing Numbers**

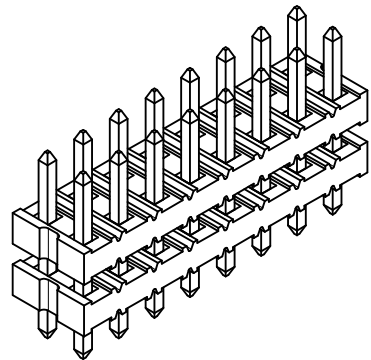
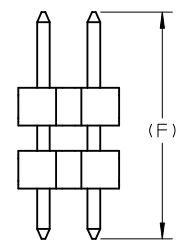
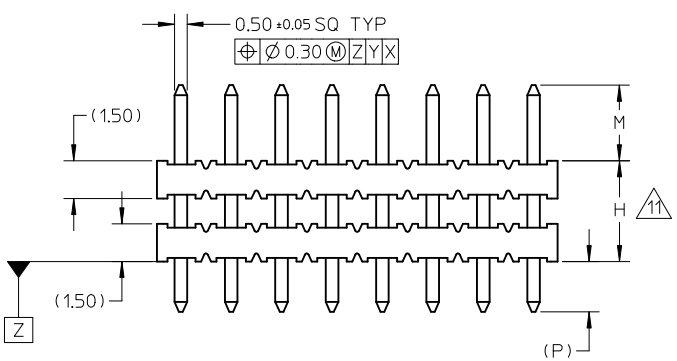
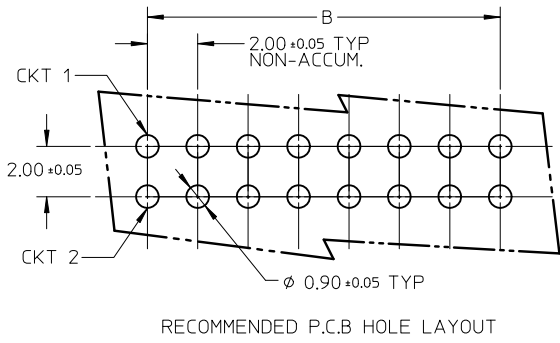
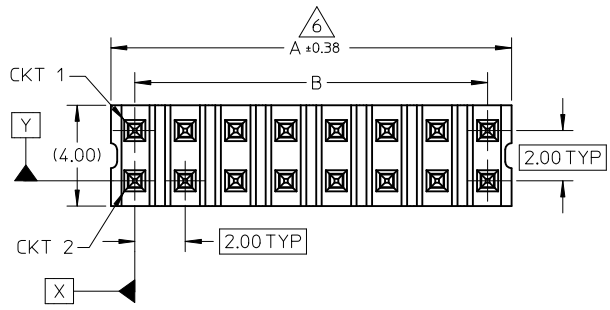
Product Specification  
Sales Drawing

PS-87761-100  
SD-87761-052

This document was generated on 05/26/2010

**PLEASE CHECK [WWW.MOLEX.COM](http://WWW.MOLEX.COM) FOR LATEST PART INFORMATION**

- NOTES:
- MATERIAL:  
HSG: NYLON, GLASS-FILLED, UL94V-0 COLOR: BLACK  
PIN: 0.50MM SQ, COPPER ALLOY
  - PLATING FINISH:
    - 0.38µm MIN. GOLD OVER  
1.25µm MIN. NICKEL OVERALL.
    - GOLD FLASH ON CONTACT AND  
2.50µm MIN. TIN ON SOLDER TAIL OVER  
1.25µm MIN. NICKEL OVERALL.
    - 0.38µm MIN. GOLD PLATE ON CONTACT AND  
2.00µm MIN. TIN ON SOLDER TAIL OVER  
1.25µm MIN. NICKEL OVERALL.
    - 0.75µm MIN. GOLD PLATE ON CONTACT AND  
2.00µm MIN. TIN ON SOLDER TAIL OVER  
1.25µm MIN. NICKEL OVERALL.
    - 2.50µm MIN. TIN OVERALL  
1.25µm MIN. NICKEL OVERALL
    - 0.38µm MIN. GOLD PLATE ON CONTACT AND  
0.05µm MIN. GOLD ON SOLDER TAIL OVER  
1.25µm MIN. NICKEL OVERALL.
    - 0.75µm MIN. GOLD PLATE ON CONTACT AND  
0.05µm MIN. GOLD ON SOLDER TAIL OVER  
1.25µm MIN. NICKEL OVERALL.
    - 0.75µm MIN. GOLD OVERALL  
1.25µm MIN. NICKEL OVERALL.
  - PIN PUSHOUT FORCE: 0.85KgF MIN IN EITHER DIRECTION.
  - THE ABOVE 16CKTS SHOWN IS FOR ILLUSTRATION ONLY.
  - FOR PACKING OPTION PLEASE REFER TO THE TABLE.
  - IRREGULAR CIRCUIT CUTOFF WITHIN BREAKAWAY SECTION IS PERMISSIBLE. CUTTING OR CHIPPING OF THE MAIN BODY IS NOT ACCEPTABLE
  - PRODUCT SPEC PS-87761-001 APPLIES.
  - RECOMMENDED PCB THICKNESS 1.60MM.
  - WAFER TO BE FLAT WITHIN 0.003 mm/mm
  - PACKAGING SPECIFICATION:  
TRAY: PK-89990-487  
BULK: PK-89990-490  
TUBE: PK-89990-475
  - WHEN WAFER ARE STACK TOGETHER, DIMENSION 'H' SHOULD BE TAKEN AS REFERENCE.



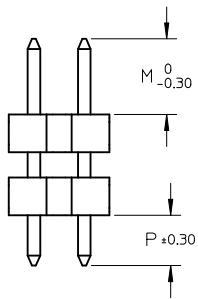
0087-DW-FUJITSU EC NO: S2010-0896 DRWN:SKANG 2010/04/23 CHKD:ATSEE 2010/05/24 APPR:MLONG 2010/05/29	QUALITY SYMBOLS ▽=0 ◻=0	GENERAL TOLERANCES (UNLESS SPECIFIED)		DIMENSION STYLE MM ONLY		SCALE NTS	DESIGN UNITS METRIC	THIRD ANGLE PROJECTION		
			mm	INCH	DRAWN BY	DATE	TITLE			
		4 PLACES	± ---	± ---	KCHO	2005/02/23	2MM DUAL ROW DUAL WAFER HEADER, VERTICAL T/H			
		3 PLACES	± ---	± ---	CHECKED BY	DATE				
	± 0.20	± ---	PTL IM	2005/04/26						
	± ---	± ---	APPROVED BY	DATE						
	ANGULAR ± 3 °		MLONG	2009/12/02						
	DRAFT WHERE APPLICABLE MUST REMAIN WITHIN DIMENSIONS		MATERIAL NO.	SEE TABLE		MOLEX INCORPORATED DOCUMENT NO. SD-87761-052		SHEET NO. 1 OF 3		
			SIZE	THIS DRAWING CONTAINS INFORMATION THAT IS PROPRIETARY TO MOLEX INCORPORATED AND SHOULD NOT BE USED WITHOUT WRITTEN PERMISSION						

10 9 8 7 6 5 4 3 2 1

CKT SIZE	DIMENSION	
	A	B
04	4.00	2.00
06	6.00	4.00
08	8.00	6.00
10	10.00	8.00
12	12.00	10.00
14	14.00	12.00
16	16.00	14.00
18	18.00	16.00
20	20.00	18.00
22	22.00	20.00
24	24.00	22.00
26	26.00	24.00
28	28.00	26.00
30	30.00	28.00
32	32.00	30.00
34	34.00	32.00
36	36.00	34.00
38	38.00	36.00
40	40.00	38.00
42	42.00	40.00
44	44.00	42.00
46	46.00	44.00
48	48.00	46.00
50	50.00	48.00

PART NUMBERS	CKT SIZE	VOID POSITION	KINK POSITION	DIMENSION				PLATING OPTION	PACKAGING TYPE
				MATING END	STACKER HEIGHT	SOLDER TAIL	(F)		
				M	H	(P)			
87761-0401	4	----	----	4.00	15.50	3.50	23.00	3	TRAY
87761-0600	6	----	----	7.00	5.00	2.80	14.80	5	
87761-0801	8	3,4,5,6	----	4.00	15.50	3.50	23.00	3	
87761-0800	8	----	----	8.70	16.00	3.50	28.20	4	BULK
87761-0802	8	----	----	3.50	21.34	3.50	28.34	8	TRAY
87761-1006	10	1	----	1.16	3.05	3.99	8.20	5	
87761-1009	10	----	----	1.16	3.05	3.99	8.20	5	
87761-1007	10	----	----	2.60	34.00	2.60	39.20	5	
87761-1000	10	----	----	5.50	27.50	3.43	36.43	4	
87761-1001	10	----	----	2.50	14.50	4.00	21.00	4	
87761-0012	12	----	----	2.60	10.00	3.70	16.30	5	
87761-1200	12	----	----	4.00	24.00	2.79	30.79	4	
87761-0016	16	----	----	4.00	11.15	3.85	17.00	3	
87761-0017	16	----	----	3.00	3.00	2.70	8.70	5	
87761-1600	16	----	----	7.00	5.00	2.80	14.80	5	
87761-0020	20	----	----	6.00	4.00	2.90	12.90	5	
87761-0031	20	----	----	3.00	4.00	2.03	9.00	6	
87761-2000	20	----	----	4.00	24.00	2.79	30.79	4	
87761-2001	20	----	----	2.50	14.50	4.00	21.00	4	
87761-2018	20	----	----	4.50	10.16	4.45	19.10	3	
87761-2400	24	----	----	5.50	27.50	2.80	35.80	4	
87761-2401	24	----	----	2.00	60.00	2.00	64.00	7	
87761-2402	24	----	----	2.00	42.00	2.00	46.00	7	
87761-2610	26	----	----	5.30	6.30	2.70	14.30	4	
87761-3000	30	----	----	4.00	17.30	4.00	25.30	1	
87761-0024	40	----	----	8.89	15.88	3.43	28.20	4	
87761-4000	40	----	----	2.60	3.00	2.60	8.20	5	
87761-4218	42	----	----	4.50	10.16	4.45	19.10	3	
87761-4400	44	----	----	7.00	5.00	4.00	16.00	5	
87761-0026	50	----	----	8.89	15.88	3.43	28.20	4	
87761-5000	50	----	----	3.50	10.00	3.50	17.00	5	

NOTES:  
 12. APPLY ONLY FOR PART#87761-5021 & 87761-5022



<b>0087-DW-FUJITSU</b> EC NO: S2010-0896 DRWN:SKANG 2010/04/23 CHKD:ATSEE 2010/05/24 APPR:MLONG 2010/05/29	QUALITY SYMBOLS	GENERAL TOLERANCES (UNLESS SPECIFIED)	DIMENSION STYLE	SCALE	DESIGN UNITS	THIRD ANGLE PROJECTION
	$\nabla=0$ $\square=0$	mm INCH	MM ONLY	NTS	METRIC	
		4 PLACES ± --- ± --- 3 PLACES ± --- ± --- 2 PLACES ± 0.20 ± --- 1 PLACE ± --- ± --- ANGULAR ± 3 °	DRAWN BY DATE KCHO 2005/02/23 CHECKED BY DATE PTL IM 2005/04/26 APPROVED BY DATE MLONG 2009/12/02	TITLE	2MM DUAL ROW DUAL WAFER HEADER, VERTICAL T/H	
		DRAFT WHERE APPLICABLE MUST REMAIN WITHIN DIMENSIONS	MATERIAL NO. SEE TABLE SIZE A3 THIS DRAWING CONTAINS INFORMATION THAT IS PROPRIETARY TO MOLEX INCORPORATED AND SHOULD NOT BE USED WITHOUT WRITTEN PERMISSION	MOLEX MOLEX INCORPORATED DOCUMENT NO. SD-87761-052 SHEET NO. 2 OF 3		

9 8 7 6 5 4 3 2 1

PART NUMBERS	CKT SIZE	VOID POSITION	KINK POSITION	DIMENSION				PLATING OPTION	PACKAGING TYPE
				MATING END	STACKER HEIGHT	SOLDER TAIL	(F)		
				M	H	(P)			
87761-5001	50	----	----	2.50	10.30	4.00	16.80	4	TRAY
△ 87761-5021	50	----	----	4.00	8.70	2.50	15.20	3	
△ 87761-5022	50	----	----	4.00	5.71	2.50	12.21	3	

<b>0087-DW-FUJITSU</b> EC NO: S2010-0896 DRWN:SKANG 2010/04/23 CHKD:ATSEE 2010/05/24 APPR:MLONG 2010/05/29	DESCRIPTION REV	<b>QUALITY SYMBOLS</b> =0 =0	<b>GENERAL TOLERANCES (UNLESS SPECIFIED)</b> <table border="1"> <tr> <td></td> <td>mm</td> <td>INCH</td> </tr> <tr> <td>4 PLACES</td> <td>± ---</td> <td>± ---</td> </tr> <tr> <td>3 PLACES</td> <td>± ---</td> <td>± ---</td> </tr> <tr> <td>2 PLACES</td> <td>± 0.20</td> <td>± ---</td> </tr> <tr> <td>1 PLACE</td> <td>± ---</td> <td>± ---</td> </tr> </table>		mm	INCH	4 PLACES	± ---	± ---	3 PLACES	± ---	± ---	2 PLACES	± 0.20	± ---	1 PLACE	± ---	± ---	<b>DIMENSION STYLE</b> <b>MM ONLY</b>	<table border="1"> <tr> <td>DRAWN BY</td> <td>DATE</td> </tr> <tr> <td>KCHO</td> <td>2005/02/23</td> </tr> <tr> <td>CHECKED BY</td> <td>DATE</td> </tr> <tr> <td>PTL IM</td> <td>2005/04/26</td> </tr> <tr> <td>APPROVED BY</td> <td>DATE</td> </tr> <tr> <td>MLONG</td> <td>2009/12/02</td> </tr> </table>	DRAWN BY	DATE	KCHO	2005/02/23	CHECKED BY	DATE	PTL IM	2005/04/26	APPROVED BY	DATE	MLONG	2009/12/02	<table border="1"> <tr> <td>SCALE</td> <td>DESIGN UNITS</td> <td rowspan="2">  THIRD ANGLE PROJECTION         </td> </tr> <tr> <td>NTS</td> <td>METRIC</td> </tr> </table>	SCALE	DESIGN UNITS	THIRD ANGLE PROJECTION	NTS	METRIC	<b>TITLE</b> 2MM DUAL ROW DUAL WAFER HEADER, VERTICAL T/H
			mm	INCH																																			
		4 PLACES	± ---	± ---																																			
		3 PLACES	± ---	± ---																																			
2 PLACES	± 0.20	± ---																																					
1 PLACE	± ---	± ---																																					
DRAWN BY	DATE																																						
KCHO	2005/02/23																																						
CHECKED BY	DATE																																						
PTL IM	2005/04/26																																						
APPROVED BY	DATE																																						
MLONG	2009/12/02																																						
SCALE	DESIGN UNITS	THIRD ANGLE PROJECTION																																					
NTS	METRIC																																						
<b>DRAFT WHERE APPLICABLE MUST REMAIN WITHIN DIMENSIONS</b>			<b>MATERIAL NO.</b> SEE TABLE	<b>DOCUMENT NO.</b> SD-87761-052	<b>SHEET NO.</b> 3 OF 3	<b>MOLEX INCORPORATED</b>																																	
<b>SIZE</b> A3			THIS DRAWING CONTAINS INFORMATION THAT IS PROPRIETARY TO MOLEX INCORPORATED AND SHOULD NOT BE USED WITHOUT WRITTEN PERMISSION																																				