

PLEASE CHECK WWW.MOLEX.COM FOR LATEST PART INFORMATION

Part Number: [0191310020](#)
Status: **Active**
Description: InsulKrimp™ Block Spade Tongue Terminal for 14 to 16 AWG Wire, Stud Size 6, Length 19.80mm (.781")

Documents:

[Drawing \(PDF\)](#) [RoHS Certificate of Compliance \(PDF\)](#)
[Product Specification PS-19902-009 \(PDF\)](#)

Agency Certification

CSA LR18689
 UL E32244

General

Product Family Ring and Spade Terminals
 Series [19131](#)
 Crimp Quality Equipment Yes
 Mil-Spec N/A
 Product Name InsulKrimp™
 Type Spade Block

Physical

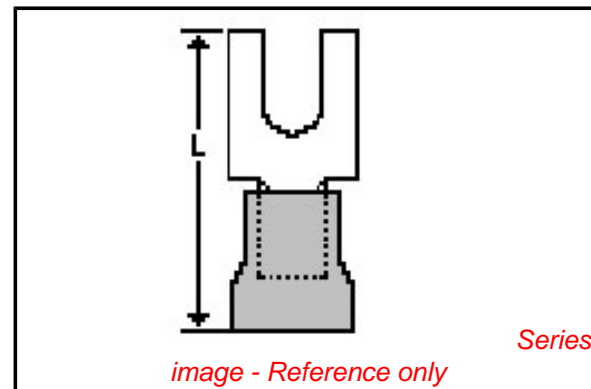
Barrel Type Closed
 Color - Resin Natural
 Flammability 94V-2
 Insulation PVC
 Material - Plating Mating Tin
 Packaging Type Bag
 Plating min: Mating (µin) 100
 Plating min: Mating (µm) 2.5
 Plating min: Termination (µin) 100
 Plating min: Termination (µm) 2.5
 Stud Size 5-6 (M3-3.5)
 Termination Interface: Style Crimp or Compression
 Wire Insulation Diameter 4.40mm (.175") max.
 Wire Size AWG 14, 16
 Wire Size mm² 1.30 - 2.00

Material Info

Old Part Number BB-2781-06X

Reference - Drawing Numbers

Product Specification PS-19902-009
 Sales Drawing SD-19200-1001



EU RoHS

ELV and RoHS Compliant
REACH SVHC
 Not Reviewed
Halogen-Free Status
Not Reviewed

China RoHS



Need more information on product environmental compliance?

Email productcompliance@molex.com
 For a multiple part number RoHS Certificate of Compliance, [click here](#)

Please visit the [Contact Us](#) section for any non-product compliance questions.

Search Parts in this Series

[19131Series](#)

Application Tooling | FAQ

Tooling specifications and manuals are found by selecting the products below. Crimp Height Specifications are then contained in the Application Tooling Specification document.

Global

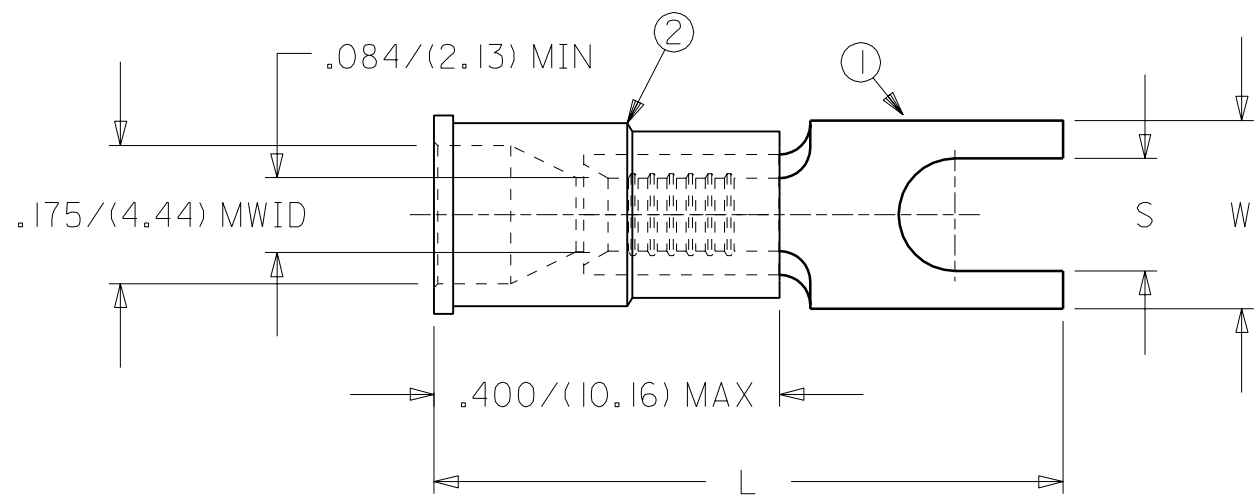
Description	Product #
Hand Crimp Tool	0640010100
Hand Crimp Tool	0640010300
Hand Crimp Tool	0640011400
Crimp Head for the AT-200™ Pneumatic Hand Tool	0640050100
Crimp Head for the AT-200™ Pneumatic Hand Tool	0640050300
Crimp Head for the AT-200™ Pneumatic Hand Tool	0640051400

This document was generated on 04/14/2010

PLEASE CHECK WWW.MOLEX.COM FOR LATEST PART INFORMATION

PART NUMBER	STUD SIZE	"W" ±.010/(0.25)	"L" MAX	"S" ±.005/(0.13)
BB-2781-04X	04	.295/(7.49)	.781/(19.8)	.119/(3.02)
BB-2781-06X	06	.295/(7.49)	.781/(19.8)	.146/(3.71)
BB-2781-08X	08	.295/(7.49)	.781/(19.8)	.173/(4.39)
BB-2781-10X	10	.295/(7.49)	.781/(19.8)	.198/(5.03)

DRWG. NO. SD-19200-1001



A	RELEASE CUSTOMER DRAWING ET80481 10/02 DAY
LTR.	REVISIONS

CUSTOMER DRAWING

- NOTES:
- MATERIAL: COPPER
STOCK THICKNESS: .031 ±.003/(0.79±0.08)
PLATING: ELECTRO-TIN
 - INSULATION: PVC (BLUE)
 - MWID=MAXIMUM WIRE INSULATION DIAMETER
 - ALL DIMENSIONS=INCHES/(METRIC)

DIMENSIONS SHOWN (METRIC) INCH	
UNLESS OTHERWISE SPECIFIED TOLERANCES: ANGULAR ± 1/2°	
	INCH METRIC
3 PLACE	± .005 ± ---
2 PLACE	± .01 ± 0.13
1 PLACE	± --- ± 0.25
DRAFT WHERE APPLICABLE MUST REMAIN WITHIN DIMENSIONS	
DRWG. BY DAY	CHK'D. BY RWD
APP'D. BY RWD	SCALE NO:NE

REVISE ONLY ON CAD SYSTEM			
TITLE SPADE TONGUE TERMINAL INSULKRIMP (BLOCK) 16-14 AWG/(1.0-2.5 mm ²)			
molex ETC INC. PINELLAS PARK, FLA. 33781 U.S.A.		SHEET NO.	DATE 98/10/02
PART NO. SEE CHART		DRWG. NO. SD-19200-1001	
FILE NAME 92001001.CST	THIS DRAWING CONTAINS INFORMATION THAT IS PROPRIETARY TO MOLEX-ETC INC. AND SHOULD NOT BE USED WITHOUT WRITTEN PERMISSION.		DIV. SIZE A