

**PLEASE CHECK WWW.MOLEX.COM FOR LATEST PART INFORMATION**

**Part Number:** [0563822000](#)  
**Status:** **Active**  
**Description:** CRC™ Shielded Rectangular I/O Cable Clamp

**Documents:**

[3D Model](#) [Product Specification PS-51238-010 \(PDF\)](#)  
[Drawing \(PDF\)](#) [RoHS Certificate of Compliance \(PDF\)](#)

**General**

Product Family	I/O Connectors
Series	<a href="#">56382</a>
Application	N/A
Component Type	Cable Clamp
Product Name	CRC™
Type	N/A

**Physical**

Circuits (Loaded)	N/A
Lock to Mating Part	Yes
Material - Plating Mating	n/a
Orientation	Vertical
Packaging Type	Bag
Panel Mount	N/A
Pitch - Mating Interface (in)	0.000 In
Pitch - Mating Interface (mm)	0.00 mm
Polarized to Mating Part	N/A
Temperature Range - Operating	-40°C to +105°C
Termination Interface: Style	N/A

**Electrical**

Current - Maximum per Contact	N/A
-------------------------------	-----

**Material Info**

**Reference - Drawing Numbers**

Product Specification	PS-51238-010
Sales Drawing	SD-56382-005



**EU RoHS**  
**ELV and RoHS**  
**Compliant**  
**REACH SVHC**  
 Not Reviewed  
**Halogen-Free**  
**Status**  
 Not Reviewed

**China RoHS**



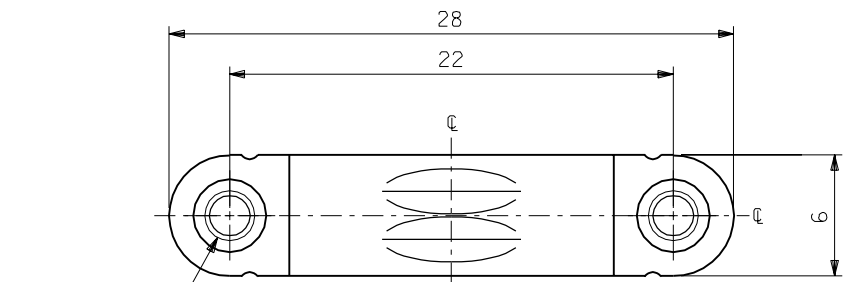
**Need more information on product environmental compliance?**

Email [productcompliance@molex.com](mailto:productcompliance@molex.com)  
 For a multiple part number RoHS Certificate of Compliance, [click here](#)

Please visit the [Contact Us](#) section for any non-product compliance questions.

**Search Parts in this Series**  
[56382Series](#)

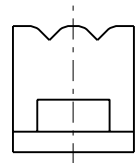
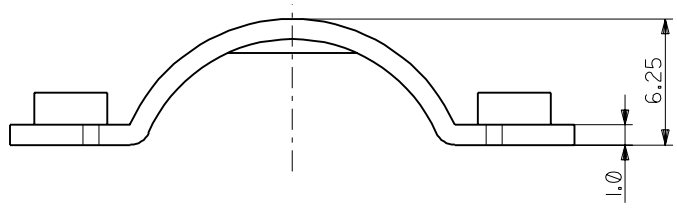
**Use With**  
[56381](#) and [56385](#) shell cover, [58203](#) cross recessed head screw



M2.5X0.45  
メートル並目ネジ  
METRIC COARSE  
SCREW THREADS

注記  
NOTES

1. 材質  
MATERIAL  
ステンレス鋼  
STAINLESS STEEL
2. 適合シェルカバー : 56381-2000  
APPLICABLE SHELL COVER : 56381-2000
3. 適合ネジ : 十字穴付きなべ小ネジ  
APPLICABLE SCREW : CROSS RECESSED PAN HEAD MACHINE SCREW  
ネジサイズ : M2.5X8  
SCREW SIZE : M2.5X8



56382-2000	56382-****
------------	------------

MATERIAL.NO	MODEL.NO
-------------	----------

DIMENSIONS:	SHT	REV
<input type="checkbox"/> mm <input type="checkbox"/> INCH	<input checked="" type="checkbox"/> mm ONLY	REVISE ON CAD ONLY

TITLE: COMPACT ROBOT CONN. (CRC)  
CABLE CLAMP

**MOLEX INCORPORATED**

MATERIAL NO.	DRAWING NO.	SHEET NO.
SEE CHART	SD-56382-005	1 OF 1

THIS DRAWING CONTAINS INFORMATION THAT IS PROPRIETARY TO MOLEX INCORPORATED AND SHOULD NOT BE USED WITHOUT WRITTEN PERMISSION. SIZE B

DO NOT SCALE DRAWING

EC NO. DRWN: CHK: APPR:	EC NO. DRWN: CHK: APPR:	EC NO. DRWN: CHK: APPR:	REVISED 01/10/19 EC NO. J2002-0944 DRWN: K.SAKAMOTO CHK: J.MIYAZAWA APPR: Y.O.ITO	RELEASED 01/02/16 EC NO. JD2001-1040 DRWN: S.AKIYAMA CHK: J.MIYAZAWA APPR: H.IKESUGI	MATERIAL 材料 注記参照 SEE NOTES	GENERAL TOLERANCES: (UNLESS SPECIFIED) 一般公差	SCALE 4-1	DESIGN UNITS <input checked="" type="checkbox"/> mm <input type="checkbox"/> INCH	THIRD ANGLE PROJECTION	TITLE: COMPACT ROBOT CONN. (CRC) CABLE CLAMP
			A	0	FINISH 仕上げ —	10 UNDER 未満	±0.2	DRAWN BY & DATE <i>S. Akizawa</i> 01/01/25		
					WIRE RANGE 適用電線範囲 —	10 OVER 30 UNDER 未満	±0.25	CHECKED BY & DATE <i>J. Miyazawa / Y. Ito</i>		
					INS. RANGE 被覆外径 —	30 OVER 以上	±0.3	APPROVED BY & DATE <i>Y. Ito</i>		
						ANGLE 角度	±3°	CAD FILENAME 56382005.S01		